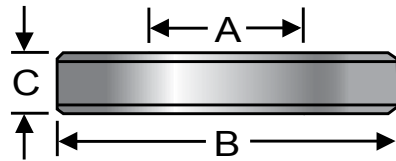


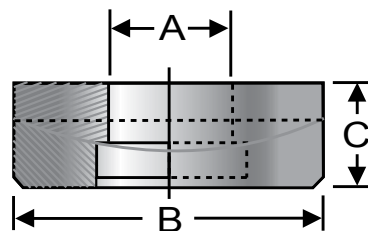
Washers

Steel washers are made from cold finished steel and then case hardened. Black oxide finish. Stainless steel washers are type 303.



Flat

Steel P/N	Stainless P/N	Bolt Size	Hole Dia (A)	OD (B)	Thickness (C)
MFW-1	SFW-1	1/4	17/64	11/16	3/16
MFW-2	SFW-2	5/16	11/32	13/16	3/16
MFW-3	SFW-3	3/8	25/64	15/16	3/16
MFW-4	SFW-4	1/2	17/32	1 1/8	3/16
MFW-5	SFW-5	5/8	21/32	1 3/8	3/16
MFW-6	SFW-6	3/4	25/32	1 5/8	1/4
MFW-7	SFW-7	7/8	29/32	1 3/4	1/4
MFW-8	SFW-8	1	1 1/32	2	1/4



2-Piece Spherical

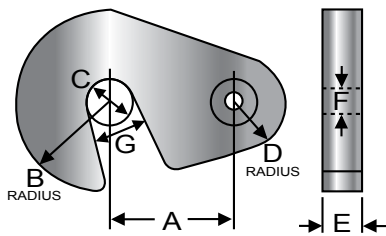
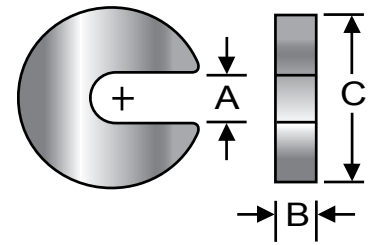
Steel P/N	Stainless P/N	Bolt Size	Hole Dia (A)	OD (B)	Thickness (C)
TPW-1	STPW-1	1/4	9/32	5/8	3/16
TPW-2	STPW-2	5/16	11/32	13/16	1/4
TPW-3	STPW-3	3/8	13/32	15/16	1/4
TPW-4	STPW-4	1/2	17/32	1 3/16	5/16
TPW-5	STPW-5	5/8	21/32	1 3/8	5/16
TPW-6	STPW-6	3/4	25/32	1 5/8	3/8
TPW-7	STPW-7	7/8	15/16	1 7/8	3/8
TPW-8	STPW-8	1	1 1/16	2	1/2

Washers

Steel washers are made from cold finished steel and then case hardened. Black oxide finish. Stainless steel washers are type 303.

Heavy-Duty C-Washer - Steel

P/N	Slot Width (A)	Thickness (B)	Outside Dia (C)
MW-3	9/32	1/4	1 1/4
MW-7	11/32	5/16	1 1/4
MW-12	13/32	3/8	1 1/2
MW-18	17/32	3/8	2
MW-21	21/32	3/8	2 1/8
MW-24	25/32	7/16	2 1/2
MW-27	29/32	1/2	2 5/8
MW-29	1 1/32	9/16	3



Swing C-Washer

P/N	C-C (A)	Slot End Radius (B)	Slot Dia (C)	Hole End Radius (D)	Thickness (E)	Hole Dia (F)	Screw Size (G)
MSW-1	1	3/4	13/32	3/8	1/4	5/16	1/4-20
MSW-2	1 1/4	1	17/32	1/2	3/8	3/8	5/16-18
MSW-3	1 1/2	1 1/8	21/32	9/16	3/8	1/2	3/8-16
MSW-4	1 3/4	1 1/4	25/32	5/8	1/2	1/2	3/8-16