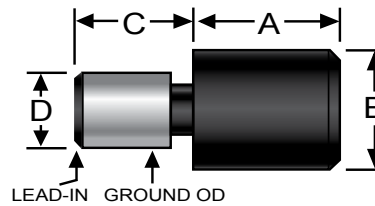


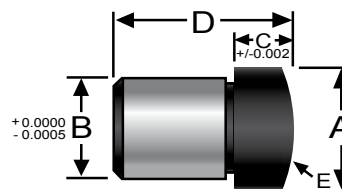
Rest Buttons

Used in jig and fixture work. Made from cold finished steel. Carburized and hardened with a black oxide finish. Ground insert diameter tolerance ± 0.0005 ".



Press Fit

P/N	Button Height (A)	Button Dia. (B)	Insert Height (C)	Insert Dia. (D)
RPF-1T	1/4	3/8	3/8	0.1885
RPF-2T	3/8	3/8	3/8	0.1885
RPF-3T	1/2	3/8	3/8	0.1885
RPF-1S	1/4	1/2	1/2	0.2510
RPF-2S	3/8	1/2	1/2	0.2510
RPF-3S	1/2	1/2	1/2	0.2510
RPF-1	1/4	5/8	1/2	0.3760
RPF-2	3/8	5/8	1/2	0.3760
RPF-3	1/2	5/8	1/2	0.3760
RPF-4	5/8	5/8	1/2	0.3760
RPF-5	3/4	5/8	1/2	0.3760
RPF-6	1	5/8	1/2	0.3760
RPF-7	1 1/4	5/8	1/2	0.3760
RPF-8	1 1/4	3/4	1/2	0.2010



Spherical Press Fit

P/N	Button Dia (A)	Insert Dia (B)	Button Height (C)	Total Height (D)	Button Radius (E)
RSPF-25	5/16	0.1890	1/8	3/8	1/2
RSPF-27	3/8	0.2515	3/16	1/2	5/8
RSPF-29	1/2	0.3765	3/16	9/16	3/4
RSPF-31	1/2	0.3765	1/4	5/8	3/4
RSPF-33	1/2	0.3765	3/8	3/4	3/4
RSPF-35	1/2	0.3765	1/2	7/8	3/4



1-800-453-1692

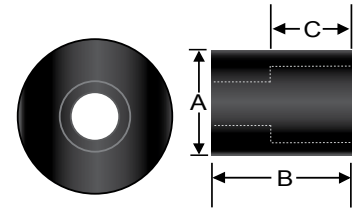
www.aboveboardelectronics.com

Rest Buttons

Used in jig and fixture work. Made from cold finished steel. Carburized and hardened with a black oxide finish. Ground insert diameter tolerance $\pm.0005"$.

Circular Type

P/N	Screw Size	Button Dia. (A)	Button Height (B)	Insert Height (C)
CF-1	#10	1/2	5/16	7/32
CF-1L	#10	1/2	1/2	7/32
CF-2	1/4	5/8	7/16	9/32
CF-2L	1/4	5/8	5/8	9/32
CF-3	5/16	3/4	1/2	3/8
CF-6	5/16	3/4	5/8	3/8
CF-3L	5/16	3/4	3/4	3/8
CF-4	3/8	15/16	5/8	7/16
CF-7	3/8	15/16	3/4	7/16
CF-8	3/8	15/16	7/8	7/16
CF-9	3/8	15/16	1	7/16
CF-5	1/2	1-1/4	7/8	9/16



Hex Threaded

P/N	Button Height (A)	Hex Size (B)	Thread Length (C)	Thread Size (D)
HJF-1	1/2	3/8	3/8	1/4-28
HJF-2	3/4	3/8	3/8	1/4-28
HJF-3	1	3/8	3/8	1/4-28
HJF-4	1/2	1/2	1/2	3/8-24
HJF-5	3/4	1/2	1/2	3/8-24
HJF-6	1	1/2	1/2	3/8-24
HJF-7	1/2	5/8	1/2	1/2-20
HJF-8	3/4	5/8	1/2	1/2-20
HJF-9	1	5/8	1/2	1/2-20

