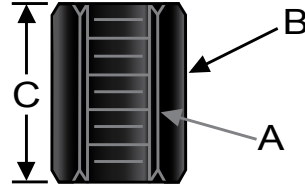


Extension or Coupling Nut

Used for set up work on machine tools. Made from cold finished steel, case hardened with a black oxide finish.

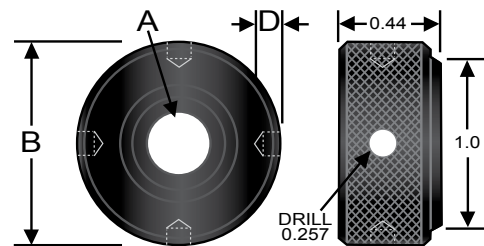


P/N	Thread (A)	Hex Size (B)	Total Length (C)
HN-0	1/4-20	9/16	7/8
HN-1	5/16-18	9/16	7/8
HN-2	3/8-16	11/16	1 1/8
HN-3	1/2-13	7/8	1 1/2
HN-4	5/8-11	1 1/16	1 3/4
HN-5	3/4-10	1 1/4	2
HN-6	7/8-9	1 3/8	2 1/4
HN-7	1-8	1 1/2	2 1/2



Knurled Nut

Used extensively in the construction of jigs, fixtures, and other special tooling. Made from hardened steel with a black oxide finish.

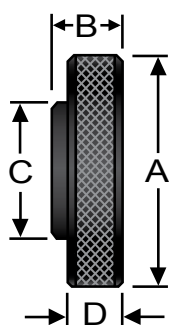


P/N	Thread (A)	OD (B)	Depth (D)
RDN-1	3/8-16	1 1/8	7/32
RDN-2	1/2-13	1 1/8	7/32
RDN-3	5/8-11	1 3/8	1/4



Check Nut

Check nuts can be used in conjunction with many other components such as knurled head screws, torque thumb screws, hand knob assemblies and toggle shoe clamp assemblies. Made from low carbon steel with a black oxide finish.



P/N	Thread	OD (A)	Thickness (B)	Minor OD (C)	Knurled Thickness (D)
CN-0	10-24	3/4	7/32	1/2	5/32
CN-1	10-32	3/4	7/32	1/2	5/32
CN-2	1/4-20	3/4	7/32	1/2	5/32
CN-3	5/16-18	3/4	5/16	1/2	1/4
CN-4	3/8-16	3/4	5/16	1/2	1/4
CN-5	1/2-13	1	3/8	3/4	1/4
CN-6	5/8-11	1	3/8	3/4	1/4