

Knurled Control Knobs

All of S&W's knurled control knobs are CNC machined from solid bar stock. The standard multi-purpose knobs are available in black oxide steel or stainless steel and have a knurled rim that ensures an exceptional grip for fast finger tightening. They are available with a reamed, tapped or solid hub or with a stud. The stud type is available as either a two-piece assembly or as a single, machined unit.

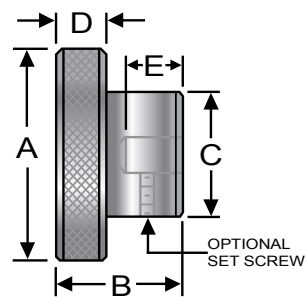
S&W precision knobs are manufactured from stainless steel or aluminum and are available with an optional handle for fast adjustment. These knobs are an excellent choice where fast, precise adjustment or positioning is required. They are available with a reamed, tapped or solid hub.

Specifications:

- Standard knobs in steel or stainless steel
- Precision knobs in stainless steel or aluminum
- CNC machined from solid bar stock
- Knurled OD for a sure grip
- 3/4" to 3" diameter
- Tapped, reamed or solid center
- Reamed style available with set screw
- Precision knobs have optional handle for faster adjustment
- Optional two-piece stud design is assembled with roll pin

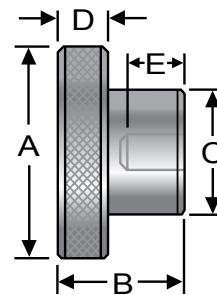


Knurled Control Knobs



Reamed - With Set Screw, Inch

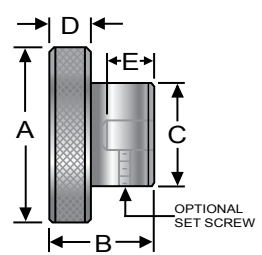
Steel P/N	Stainless P/N	Reamed Dia	Knob Dia (A)	Total Length (B)	Hub Dia (C)	Knurled Width (D)	Reamed Depth (E)	Ship Wt. (lbs)
SCKS-041	WHRS-041	3/16	3/4	5/8	1/2	1/4	3/8	0.04
SCKS-042	WHRS-042	1/4	3/4	5/8	1/2	1/4	3/8	0.04
SCKS-043	WHRS-043	1/4	1	3/4	5/8	1/4	1/2	0.08
SCKS-044	WHRS-044	5/16	1	3/4	5/8	1/4	1/2	0.08
SCKS-045	WHRS-045	5/16	1 1/2	1	3/4	5/16	5/8	0.20
SCKS-046	WHRS-046	3/8	1 1/2	1	3/4	5/16	5/8	0.20
SCKS-047	WHRS-047	3/8	2	1 1/8	1	3/8	5/8	0.46
SCKS-048	WHRS-048	1/2	2	1 1/8	1	3/8	5/8	0.46
SCKS-049	WHRS-049	1/2	2 1/2	1 1/2	1 1/2	9/16	3/4	1.16
SCKS-051	WHRS-051	5/8	2 1/2	1 1/2	1 1/2	9/16	3/4	1.16
SCKS-052	WHRS-052	5/8	3	1 3/4	1 3/4	5/8	1	1.96
SCKS-053	WHRS-053	3/4	3	1 3/4	1 3/4	5/8	1	1.96



Reamed - Without Set Screw, Inch

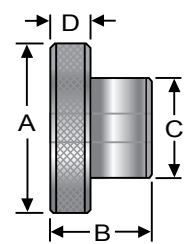
Steel P/N	Stainless P/N	Reamed Dia	Knob Dia (A)	Total Length (B)	Hub Dia (C)	Knurled Width (D)	Reamed Depth (E)	Ship Wt. (lbs)
SCK-041	WHR-041	3/16	3/4	5/8	1/2	1/4	3/8	0.04
SCK-042	WHR-042	1/4	3/4	5/8	1/2	1/4	3/8	0.04
SCK-043	WHR-043	1/4	1	3/4	5/8	1/4	1/2	0.08
SCK-044	WHR-044	5/16	1	3/4	5/8	1/4	1/2	0.08
SCK-045	WHR-045	5/16	1 1/2	1	3/4	5/16	5/8	0.20
SCK-046	WHR-046	3/8	1 1/2	1	3/4	5/16	5/8	0.20
SCK-047	WHR-047	3/8	2	1 1/8	1	3/8	5/8	0.46
SCK-048	WHR-048	1/2	2	1 1/8	1	3/8	5/8	0.46
SCK-049	WHR-049	1/2	2 1/2	1 1/2	1 1/2	9/16	3/4	1.16
SCK-051	WHR-051	5/8	2 1/2	1 1/2	1 1/2	9/16	3/4	1.16
SCK-052	WHR-052	5/8	3	1 3/4	1 3/4	5/8	1	1.96
SCK-053	WHR-053	3/4	3	1 3/4	1 3/4	5/8	1	1.96

Knurled Control Knobs



Reamed Through With Set Screw, Inch

Steel P/N	Stainless P/N	Reamed Dia	Knob Dia (A)	Total Length (B)	Hub Dia (C)	Knurled Width (D)	Ship Wt. (lbs)
SCKTS-041	WHRTS-041	3/16	3/4	5/8	1/2	1/4	0.04
SCKTS-042	WHRTS-042	1/4	3/4	5/8	1/2	1/4	0.04
SCKTS-043	WHRTS-043	1/4	1	3/4	5/8	1/4	0.08
SCKTS-044	WHRTS-044	5/16	1	3/4	5/8	1/4	0.08
SCKTS-045	WHRTS-045	5/16	1 1/2	1	3/4	5/16	0.20
SCKTS-046	WHRTS-046	3/8	1 1/2	1	3/4	5/16	0.20
SCKTS-047	WHRTS-047	3/8	2	1 1/8	1	3/8	0.46
SCKTS-048	WHRTS-048	1/2	2	1 1/8	1	3/8	0.46
SCKTS-049	WHRTS-049	1/2	2 1/2	1 1/2	1 1/2	9/16	1.16
SCKTS-051	WHRTS-051	5/8	2 1/2	1 1/2	1 1/2	9/16	1.16
SCKTS-052	WHRTS-052	5/8	3	1 3/4	1 3/4	5/8	1.96
SCKTS-053	WHRTS-053	3/4	3	1 3/4	1 3/4	5/8	1.96



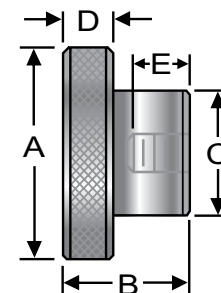
Reamed Through Without Set Screw, Inch

Steel P/N	Stainless P/N	Reamed Dia	Knob Dia (A)	Total Length (B)	Hub Dia (C)	Knurled Width (D)	Ship Wt. (lbs)
SCKT-041	WHRT-041	3/16	3/4	5/8	1/2	1/4	0.04
SCKT-042	WHRT-042	1/4	3/4	5/8	1/2	1/4	0.04
SCKT-043	WHRT-043	1/4	1	3/4	5/8	1/4	0.08
SCKT-044	WHRT-044	5/16	1	3/4	5/8	1/4	0.08
SCKT-045	WHRT-045	5/16	1 1/2	1	3/4	5/16	0.20
SCKT-046	WHRT-046	3/8	1 1/2	1	3/4	5/16	0.20
SCKT-047	WHRT-047	3/8	2	1 1/8	1	3/8	0.46
SCKT-048	WHRT-048	1/2	2	1 1/8	1	3/8	0.46
SCKT-049	WHRT-049	1/2	2 1/2	1 1/2	1 1/2	9/16	1.16
SCKT-051	WHRT-051	5/8	2 1/2	1 1/2	1 1/2	9/16	1.16
SCKT-052	WHRT-052	5/8	3	1 3/4	1 3/4	5/8	1.96
SCKT-053	WHRT-053	3/4	3	1 3/4	1 3/4	5/8	1.96



Request Info 1-800-453-1692
www.aboveboardelectronics.com

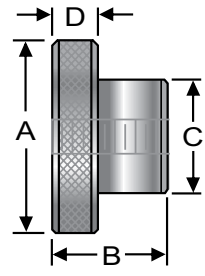
Knurled Control Knobs



Tapped, Inch

Steel P/N	Stainless P/N	Thread Size	Knob Dia (A)	Total Length (B)	Hub Dia (C)	Knurled Width (D)	Tapped Depth (E)	Ship Wt. (lbs)
SKT-021	WTR-021	10-24	3/4	5/8	1/2	1/4	3/8	0.04
SKTF-021	WTRF-021	10-32	3/4	5/8	1/2	1/4	3/8	0.04
SKT-022	WTR-022	1/4-20	3/4	5/8	1/2	1/4	3/8	0.04
SKTF-022	WTRF-022	1/4-28	3/4	5/8	1/2	1/4	3/8	0.04
SKT-023	WTR-023	1/4-20	1	3/4	5/8	1/4	1/2	0.08
SKTF-023	WTRF-023	1/4-28	1	3/4	5/8	1/4	1/2	0.08
SKT-024	WTR-024	5/16-18	1	3/4	5/8	1/4	1/2	0.08
SKTF-024	WTRF-024	5/16-24	1	3/4	5/8	1/4	1/2	0.08
SKT-025	WTR-025	5/16-18	1 1/2	1	3/4	5/16	5/8	0.20
SKTF-025	WTRF-025	5/16-24	1 1/2	1	3/4	5/16	5/8	0.20
SKT-026	WTR-026	3/8-16	1 1/2	1	3/4	5/16	5/8	0.20
SKTF-026	WTRF-026	3/8-24	1 1/2	1	3/4	5/16	5/8	0.20
SKT-027	WTR-027	3/8-16	2	1 1/8	1	3/8	5/8	0.46
SKTF-027	WTRF-027	3/8-24	2	1 1/8	1	3/8	5/8	0.46
SKT-028	WTR-028	1/2-13	2	1 1/8	1	3/8	5/8	0.46
SKTF-028	WTRF-028	1/2-20	2	1 1/8	1	3/8	5/8	0.46
SKT-029	WTR-029	1/2-13	2 1/2	1 1/2	1 1/2	9/16	3/4	1.16
SKTF-029	WTRF-029	1/2-20	2 1/2	1 1/2	1 1/2	9/16	3/4	1.16
SKT-031	WTR-031	5/8-11	2 1/2	1 1/2	1 1/2	9/16	3/4	1.16
SKTF-031	WTRF-031	5/8-18	2 1/2	1 1/2	1 1/2	9/16	3/4	1.16
SKT-032	WTR-032	5/8-11	3	1 3/4	1 3/4	5/8	1	1.96
SKTF-032	WTRF-032	5/8-18	3	1 3/4	1 3/4	5/8	1	1.96
SKT-033	WTR-033	3/4-10	3	1 3/4	1 3/4	5/8	1	1.96
SKTF-033	WTRF-033	3/4-16	3	1 3/4	1 3/4	5/8	1	1.96

Knurled Control Knobs

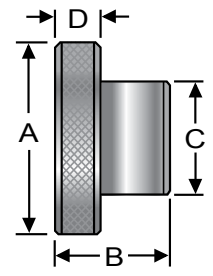


Tapped Through, Inch

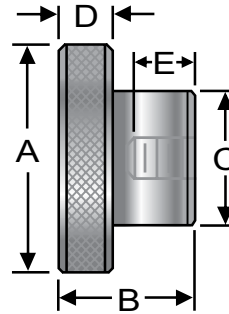
Steel P/N	Stainless P/N	Thread Size	Knob Dia (A)	Total Length (B)	Hub Dia (C)	Knurled Width (D)	Ship Wt. (lbs)
SKTT-021	WTRT-021	10-24	3/4	5/8	1/2	1/4	0.04
SKTTF-021	WTRTF-021	10-32	3/4	5/8	1/2	1/4	0.04
SKTT-022	WTRT-022	1/4-20	3/4	5/8	1/2	1/4	0.04
SKTTF-022	WTRTF-022	1/4-28	3/4	5/8	1/2	1/4	0.04
SKTT-023	WTRT-023	1/4-20	1	3/4	5/8	1/4	0.08
SKTTF-023	WTRTF-023	1/4-28	1	3/4	5/8	1/4	0.08
SKTT-024	WTRT-024	5/16-18	1	3/4	5/8	1/4	0.08
SKTTF-024	WTRTF-024	5/16-24	1	3/4	5/8	1/4	0.08
SKTT-025	WTRT-025	5/16-18	1 1/2	1	3/4	5/16	0.20
SKTTF-025	WTRTF-025	5/16-24	1 1/2	1	3/4	5/16	0.20
SKTT-026	WTRT-026	3/8-16	1 1/2	1	3/4	5/16	0.20
SKTTF-026	WTRTF-026	3/8-24	1 1/2	1	3/4	5/16	0.20
SKTT-027	WTRT-027	3/8-16	2	1 1/8	1	3/8	0.46
SKTTF-027	WTRTF-027	3/8-24	2	1 1/8	1	3/8	0.46
SKTT-028	WTRT-028	1/2-13	2	1 1/8	1	3/8	0.46
SKTTF-028	WTRTF-028	1/2-20	2	1 1/8	1	3/8	0.46
SKTT-029	WTRT-029	1/2-13	2 1/2	1 1/2	1 1/2	9/16	1.16
SKTTF-029	WTRTF-029	1/2-20	2 1/2	1 1/2	1 1/2	9/16	1.16
SKTT-031	WTRT-031	5/8-11	2 1/2	1 1/2	1 1/2	9/16	1.16
SKTTF-031	WTRTF-031	5/8-18	2 1/2	1 1/2	1 1/2	9/16	1.16
SKTT-032	WTRT-032	5/8-11	3	1 3/4	1 3/4	5/8	1.96
SKTTF-032	WTRTF-032	5/8-18	3	1 3/4	1 3/4	5/8	1.96
SKTT-033	WTRT-033	3/4-10	3	1 3/4	1 3/4	5/8	1.96
SKTTF-033	WTRTF-033	3/4-16	3	1 3/4	1 3/4	5/8	1.96

Solid Hub, Inch

Steel P/N	Stainless P/N	Knob Dia (A)	Total Length (B)	Hub Dia (C)	Knurled Width (D)	Ship Wt. (lbs)
SCK-075	SSCK-075	3/4	5/8	1/2	1/4	0.04
SCK-100	SSCK-100	1	3/4	5/8	1/4	0.08
SCK-150	SSCK-150	1 1/2	1	3/4	5/16	0.20
SCK-200	SSCK-200	2	1 1/8	1	3/8	0.46
SCK-250	SSCK-250	2 1/2	1 1/2	1 1/2	9/16	1.16
SCK-300	SSCK-300	3	1 3/4	1 3/4	5/8	1.96

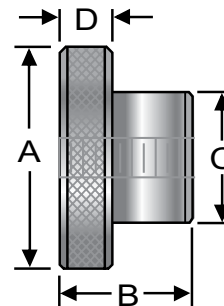


Knurled Control Knobs



Tapped, Metric

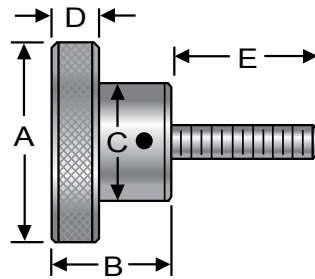
Steel P/N	Stainless P/N	Thread Size	Knob Dia (A)	Total Length (B)	Hub Dia (C)	Knurled Width (D)	Thread Depth (E)	Ship Wt. (lbs)
MSKT-021	MWTR-021	M5	19	16	13	6	10	0.04
MSKT-022	MWTR-022	M6	19	16	13	6	10	0.04
MSKT-023	MWTR-023	M6	25	19	16	6	13	0.08
MSKT-024	MWTR-024	M8	25	19	16	6	13	0.08
MSKT-025	MWTR-025	M8	38	25	19	8	16	0.20
MSKT-026	MWTR-026	M10	38	25	19	8	16	0.20
MSKT-027	MWTR-027	M10	51	29	25	10	16	0.46
MSKT-028	MWTR-028	M12	51	29	25	10	16	0.46
MSKT-029	MWTR-029	M12	64	38	38	14	19	1.16
MSKT-031	MWTR-031	M16	64	38	38	14	19	1.16
MSKT-032	MWTR-032	M16	76	44	44	16	25	1.96
MSKT-033	MWTR-033	M20	76	44	44	16	25	1.96



Tapped Through, Metric

Steel P/N	Stainless P/N	Thread Size	Knob Dia (A)	Total Length (B)	Hub Dia (C)	Knurled Width (D)	Ship Wt. (lbs)
MSKTT-021	MWTRT-021	M5	19	16	13	6	0.04
MSKTT-022	MWTRT-022	M6	19	16	13	6	0.04
MSKTT-023	MWTRT-023	M6	25	19	16	6	0.08
MSKTT-024	MWTRT-024	M8	25	19	16	6	0.08
MSKTT-025	MWTRT-025	M8	38	25	19	8	0.20
MSKTT-026	MWTRT-026	M10	38	25	19	8	0.20
MSKTT-027	MWTRT-027	M10	51	29	25	10	0.46
MSKTT-028	MWTRT-028	M12	51	29	25	10	0.46
MSKTT-029	MWTRT-029	M12	64	38	38	14	1.16
MSKTT-031	MWTRT-031	M16	64	38	38	14	1.16
MSKTT-032	MWTRT-032	M16	76	44	44	16	1.96
MSKTT-033	MWTRT-033	M20	76	44	44	16	1.96

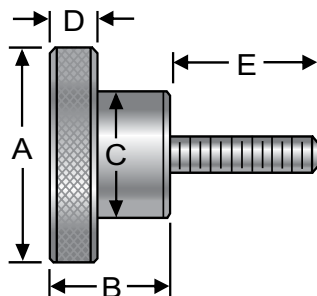
Knurled Control Knobs



With Stud Assembly, Inch

Steel P/N	Stainless P/N	Thread Size	Knob Dia (A)	Total Length (B)	Hub Dia (C)	Knurled Width (D)	Stud Length (E)	Ship Wt. (lbs)
SKS-011	WSS-011	10-24	3/4	5/8	1/2	1/4	1/2	0.06
SKSF-011	WSSF-011	10-32	3/4	5/8	1/2	1/4	1/2	0.06
SKS-012	WSS-012	10-24	3/4	5/8	1/2	1/4	1	0.10
SKSF-012	WSSF-012	10-32	3/4	5/8	1/2	1/4	1	0.10
SKS-013	WSS-013	1/4-20	3/4	5/8	1/2	1/4	3/4	0.10
SKSF-013	WSSF-013	1/4-28	3/4	5/8	1/2	1/4	3/4	0.10
SKS-014	WSS-014	1/4-20	3/4	5/8	1/2	1/4	1 1/4	0.12
SKSF-014	WSSF-014	1/4-28	3/4	5/8	1/2	1/4	1 1/4	0.12
SKS-015	WSS-015	1/4-20	1	3/4	5/8	1/4	1 3/4	0.11
SKSF-015	WSSF-015	1/4-28	1	3/4	5/8	1/4	1 3/4	0.11
SKS-016	WSS-016	1/4-20	1	3/4	5/8	1/4	3	0.12
SKSF-016	WSSF-016	1/4-28	1	3/4	5/8	1/4	3	0.12
SKS-017	WSS-017	5/16-18	1	3/4	5/8	1/4	1 3/4	0.12
SKSF-017	WSSF-017	5/16-24	1	3/4	5/8	1/4	1 3/4	0.12
SKS-018	WSS-018	5/16-18	1	3/4	5/8	1/4	3	0.14
SKSF-018	WSSF-018	5/16-24	1	3/4	5/8	1/4	3	0.14
SKS-019	WSS-019	5/16-18	1 1/2	1	3/4	5/16	1 3/4	0.26
SKSF-019	WSSF-019	5/16-24	1 1/2	1	3/4	5/16	1 3/4	0.26
SKS-021	WSS-021	5/16-18	1 1/2	1	3/4	5/16	3	0.28
SKSF-021	WSSF-021	5/16-24	1 1/2	1	3/4	5/16	3	0.28
SKS-022	WSS-022	3/8-16	1 1/2	1	3/4	5/16	1 3/4	0.26
SKSF-022	WSSF0-22	3/8-24	1 1/2	1	3/4	5/16	1 3/4	0.26
SKS-023	WSS-023	3/8-16	1 1/2	1	3/4	5/16	3	0.30
SKSF-023	WSSF-023	3/8-24	1 1/2	1	3/4	5/16	3	0.30
SKS-024	WSS-024	3/8-16	2	1 1/8	1	3/8	1 3/4	0.52
SKSF-024	WSSF-024	3/8-24	2	1 1/8	1	3/8	1 3/4	0.52
SKS-025	WSS-025	3/8-16	2	1 1/8	1	3/8	3	0.56
SKSF-025	WSSF-025	3/8-24	2	1 1/8	1	3/8	3	0.56
SKS-026	WSS-026	1/2-13	2	1 1/8	1	3/8	1 3/4	0.56
SKSF-026	WSSF-026	1/2-20	2	1 1/8	1	3/8	1 3/4	0.56
SKS-027	WSS-027	1/2-13	2	1 1/8	1	3/8	3	0.60
SKSF-027	WSSF-027	1/2-20	2	1 1/8	1	3/8	3	0.60
SKS-028	WSS-028	1/2-13	2 1/2	1 1/2	1 1/2	9/16	1 3/4	1.30
SKSF-028	WSSF-028	1/2-20	2 1/2	1 1/2	1 1/2	9/16	1 3/4	1.30
SKS-029	WSS-029	1/2-13	2 1/2	1 1/2	1 1/2	9/16	3	1.34
SKSF-029	WSSF-029	1/2-20	2 1/2	1 1/2	1 1/2	9/16	3	1.34
SKS-031	WSS-031	5/8-11	2 1/2	1 1/2	1 1/2	9/16	1 3/4	1.34
SKSF-031	WSSF-031	5/8-18	2 1/2	1 1/2	1 1/2	9/16	1 3/4	1.34
SKS-032	WSS-032	5/8-11	2 1/2	1 1/2	1 1/2	9/16	3	1.38
SKSF-032	WSSF-032	5/8-18	2 1/2	1 1/2	1 1/2	9/16	3	1.38

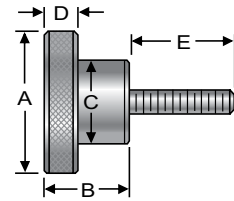
Knurled Control Knobs



With Integrated Stud, Inch

Steel P/N	Stainless P/N	Thread Size	Knob Dia (A)	Total Length (B)	Hub Dia (C)	Knurled Width (D)	Stud Length (E)	Ship Wt. (lbs)
SKS-011-S	WSS-011-S	10-24	3/4	5/8	1/2	1/4	1/2	0.06
SKSF-011-S	WSSF-011-S	10-32	3/4	5/8	1/2	1/4	1/2	0.06
SKS-012-S	WSS-012-S	10-24	3/4	5/8	1/2	1/4	1	0.10
SKSF-012-S	WSSF-012-S	10-32	3/4	5/8	1/2	1/4	1	0.10
SKS-013-S	WSS-013-S	1/4-20	3/4	5/8	1/2	1/4	3/4	0.10
SKSF-013-S	WSSF-013-S	1/4-28	3/4	5/8	1/2	1/4	3/4	0.10
SKS-014-S	WSS-014-S	1/4-20	3/4	5/8	1/2	1/4	1 1/4	0.12
SKSF-014-S	WSSF-014-S	1/4-28	3/4	5/8	1/2	1/4	1 1/4	0.12
SKS-015-S	WSS-015-S	1/4-20	1	3/4	5/8	1/4	1 3/4	0.11
SKSF-015-S	WSSF-015-S	1/4-28	1	3/4	5/8	1/4	1 3/4	0.11
SKS-016-S	WSS-016-S	1/4-20	1	3/4	5/8	1/4	3	0.12
SKSF-016-S	WSSF-016-S	1/4-28	1	3/4	5/8	1/4	3	0.12
SKS-017-S	WSS-017-S	5/16-18	1	3/4	5/8	1/4	1 3/4	0.12
SKSF-017-S	WSSF-017-S	5/16-24	1	3/4	5/8	1/4	1 3/4	0.12
SKS-018-S	WSS-018-S	5/16-18	1	3/4	5/8	1/4	3	0.14
SKSF-018-S	WSSF-018-S	5/16-24	1	3/4	5/8	1/4	3	0.14
SKS-019-S	WSS-019-S	5/16-18	1 1/2	1	3/4	5/16	1 3/4	0.26
SKSF-019-S	WSSF-019-S	5/16-24	1 1/2	1	3/4	5/16	1 3/4	0.26
SKS-021-S	WSS-021-S	5/16-18	1 1/2	1	3/4	5/16	3	0.28
SKSF-021-S	WSSF-021-S	5/16-24	1 1/2	1	3/4	5/16	3	0.28
SKS-022-S	WSS-022-S	3/8-16	1 1/2	1	3/4	5/16	1 3/4	0.26
SKSF-022-S	WSSF0-22-S	3/8-24	1 1/2	1	3/4	5/16	1 3/4	0.26
SKS-023-S	WSS-023-S	3/8-16	1 1/2	1	3/4	5/16	3	0.30
SKSF-023-S	WSSF-023-S	3/8-24	1 1/2	1	3/4	5/16	3	0.30
SKS-024-S	WSS-024-S	3/8-16	2	1 1/8	1	3/8	1 3/4	0.52
SKSF-024-S	WSSF-024-S	3/8-24	2	1 1/8	1	3/8	1 3/4	0.52
SKS-025-S	WSS-025-S	3/8-16	2	1 1/8	1	3/8	3	0.56
SKSF-025-S	WSSF-025-S	3/8-24	2	1 1/8	1	3/8	3	0.56
SKS-026-S	WSS-026-S	1/2-13	2	1 1/8	1	3/8	1 3/4	0.56
SKSF-026-S	WSSF-026-S	1/2-20	2	1 1/8	1	3/8	1 3/4	0.56
SKS-027-S	WSS-027-S	1/2-13	2	1 1/8	1	3/8	3	0.60
SKSF-027-S	WSSF-027-S	1/2-20	2	1 1/8	1	3/8	3	0.60
SKS-028-S	WSS-028-S	1/2-13	2 1/2	1 1/2	1 1/2	9/16	1 3/4	1.30
SKSF-028-S	WSSF-028-S	1/2-20	2 1/2	1 1/2	1 1/2	9/16	1 3/4	1.30
SKS-029-S	WSS-029-S	1/2-13	2 1/2	1 1/2	1 1/2	9/16	3	1.34
SKSF-029-S	WSSF-029-S	1/2-20	2 1/2	1 1/2	1 1/2	9/16	3	1.34
SKS-031-S	WSS-031-S	5/8-11	2 1/2	1 1/2	1 1/2	9/16	1 3/4	1.34
SKSF-031-S	WSSF-031-S	5/8-18	2 1/2	1 1/2	1 1/2	9/16	1 3/4	1.34
SKS-032-S	WSS-032-S	5/8-11	2 1/2	1 1/2	1 1/2	9/16	3	1.38
SKSF-032-S	WSSF-032-S	5/8-18	2 1/2	1 1/2	1 1/2	9/16	3	1.38

Knurled Control Knobs



With Stud Assembly, Metric

Steel P/N	Stainless P/N	Thread Size	Knob Dia (A)	Total Length (B)	Hub Dia (C)	Knurled Width (D)	Stud Length (E)	Ship Wt. (lbs)
MSKS-011	MWSS-011	M5	19	16	13	6	16	0.06
MSKS-012	MWSS-012	M5	19	16	13	6	25	0.06
MSKS-013	MWSS-013	M6	19	16	13	6	19	0.10
MSKS-014	MWSS-014	M6	19	19	13	6	32	0.10
MSKS-015	MWSS-015	M6	25	19	16	6	44	0.11
MSKS-016	MWSS-016	M6	25	19	16	6	76	0.12
MSKS-017	MWSS-017	M8	25	19	16	6	44	0.12
MSKS-018	MWSS-018	M8	25	25	16	6	76	0.14
MSKS-019	MWSS-019	M8	38	25	19	8	44	0.26
MSKS-021	MWSS-021	M8	38	25	19	8	76	0.28
MSKS-022	MWSS-022	M10	38	25	19	8	44	0.26
MSKS-023	MWSS-023	M10	38	25	19	8	76	0.30
MSKS-024	MWSS-024	M10	51	29	25	10	44	0.52
MSKS-025	MWSS-025	M10	51	29	25	10	76	0.56
MSKS-026	MWSS-026	M12	51	29	25	10	44	0.56
MSKS-027	MWSS-027	M12	51	29	25	10	76	0.60
MSKS-028	MWSS-028	M12	64	38	38	14	44	1.30
MSKS-029	MWSS-029	M12	64	38	38	14	76	1.26
MSKS-031	MWSS-031	M16	64	38	38	14	44	1.34
MSKS-032	MWSS-032	M16	64	38	38	14	76	1.38

With Integrated Stud, Metric

Steel P/N	Stainless P/N	Thread Size	Knob Dia (A)	Total Length (B)	Hub Dia (C)	Knurled Width (D)	Stud Length (E)	Ship Wt. (lbs)
MSKS-011-S	MWSS-011-S	M5	19	16	13	6	16	0.06
MSKS-012-S	MWSS-012-S	M5	19	16	13	6	25	0.06
MSKS-013-S	MWSS-013-S	M6	19	16	13	6	19	0.10
MSKS-014-S	MWSS-014-S	M6	19	19	13	6	32	0.10
MSKS-015-S	MWSS-015-S	M6	25	19	16	6	44	0.11
MSKS-016-S	MWSS-016-S	M6	25	19	16	6	76	0.12
MSKS-017-S	MWSS-017-S	M8	25	19	16	6	44	0.12
MSKS-018-S	MWSS-018-S	M8	25	25	16	6	76	0.14
MSKS-019-S	MWSS-019-S	M8	38	25	19	8	44	0.26
MSKS-021-S	MWSS-021-S	M8	38	25	19	8	76	0.28
MSKS-022-S	MWSS-022-S	M10	38	25	19	8	44	0.26
MSKS-023-S	MWSS-023-S	M10	38	25	19	8	76	0.30
MSKS-024-S	MWSS-024-S	M10	51	29	25	10	44	0.52
MSKS-025-S	MWSS-025-S	M10	51	29	25	10	76	0.56
MSKS-026-S	MWSS-026-S	M12	51	29	25	10	44	0.56
MSKS-027-S	MWSS-027-S	M12	51	29	25	10	76	0.60
MSKS-028-S	MWSS-028-S	M12	64	38	38	14	44	1.30
MSKS-029-S	MWSS-029-S	M12	64	38	38	14	76	1.26
MSKS-031-S	MWSS-031-S	M16	64	38	38	14	44	1.34
MSKS-032-S	MWSS-032-S	M16	64	38	38	14	76	1.38

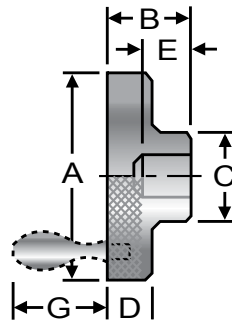


Request Info

1-800-453-1692

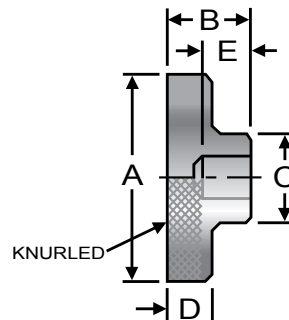
www.aboveboardelectronics.com

Precision Control Knobs



With Handle, Inch

Aluminum P/N	Stainless P/N	Reamed Dia	Knob Dia (A)	Total Length (B)	Hub Dia (C)	Knurled Width (D)	Reamed Depth (E)	Handle Length (G)
ACK-017	SAK-017	3/8	2	1 1/8	13/16	9/16	7/8	1 9/32
ACK-018	SAK-018	Solid	2	1 1/8	13/16	9/16	-	1 9/32
ACK-019	SAK-019	5/8	3	1 1/4	1 1/4	9/16	7/8	1 15/16
ACK-021	SAK-021	Solid	3	1 1/4	1 1/4	9/16	-	1 15/16



Without Handle, Inch

Aluminum P/N	Stainless P/N	Thread Size	Reamed Dia	Knob Dia (A)	Total Length (B)	Hub Dia (C)	Knurled Width (D)	Hole Depth (E)
ACK-011	SAK-011	-	1/4	1	13/16	1/2	3/8	5/8
ACK-012	SAK-012	-	Solid Hub	1	13/16	1/2	3/8	-
ACK-022	SAK-022	1/4-20	-	1	13/16	1/2	3/8	5/8
ACK-022B	SAK-022B	1/4-28	-	1	13/16	1/2	3/8	5/8
ACK-023	SAK-023	5/16-18	-	1	13/16	1/2	3/8	5/8
ACK-023B	SAK-023B	5/16-24	-	1	13/16	1/2	3/8	5/8
ACK-013	SAK-013	-	3/8	2	1 1/8	13/16	9/16	7/8
ACK-014	SAK-014	-	Solid Hub	2	1 1/8	13/16	9/16	-
ACK-024	SAK-024	3/8-16	-	2	1 1/8	13/16	9/16	7/8
ACK-024B	SAK-024B	3/8-24	-	2	1 1/8	13/16	9/16	7/8
ACK-025	SAK-025	1/2-13	-	2	1 1/8	13/16	9/16	7/8
ACK-025B	SAK-025B	1/2-20	-	2	1 1/8	13/16	9/16	7/8
ACK-015	SAK-015	-	5/8	3	1 1/4	1 1/4	11/16	7/8
ACK-016	SAK-016	-	Solid Hub	3	1 1/4	1 1/4	11/16	-
ACK-026	SAK-026	5/8-11	-	3	1 1/4	1 1/4	11/16	7/8
ACK-026B	SAK-026B	5/8-18	-	3	1 1/4	1 1/4	11/16	7/8
ACK-027	SAK-027	3/4-20	-	3	1 1/4	1 1/4	11/16	7/8
ACK-027B	SAK-027B	3/4-16	-	3	1 1/4	1 1/4	11/16	7/8



Request Info   

1-800-453-1692

www.aboveboardelectronics.com