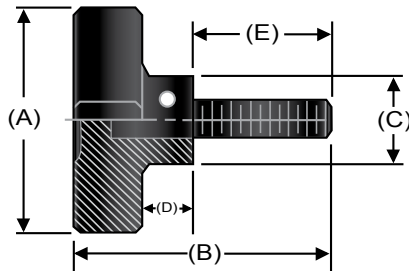


Steel Clamping Knobs



Inch

P/N	Thread Size	Knob Dia (A)	Total Length (B)	Hub Dia (C)	Thread Depth (F)	Hub Length (D)	Stud Length (E)
STLHA-2	1/4-20	1 1/2	2 5/8	5/8	-	3/8	1 3/4
STLHA-3	5/16-18	2	2 3/4	13/16	-	1/2	1 3/4
STLHA-4	3/8-16	2 1/2	2 7/8	1	-	9/16	1 3/4
STLH-2T	1/4-20	1 1/2	7/8	1/2	1/2	1/2	-
STLH-3T	5/16-18	2	1	5/8	1/2	1/2	-
STLH-4T	3/8-16	2 1/2	1 1/8	13/16	1/2	9/16	-
STLH-5T	1/2-13	2 1/2	1 1/8	1	9/16	9/16	-
STLH-2TT	1/4-20	1 1/2	7/8	1/2	-	1/2	-
STLH-3TT	5/16-18	2	1	5/8	-	1/2	-
STLH-4TT	3/8-16	2 1/2	1 1/8	13/16	-	9/16	-
STLH-5TT	1/2-13	2 1/2	1 1/8	1	-	9/16	-

Ball Knobs

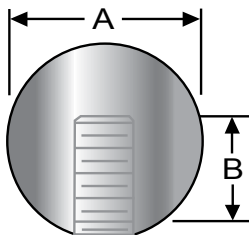
S&W's ball knobs are CNC machined from solid bar stock. These versatile knobs are available in steel, aluminum, stainless steel and brass. All knobs are individually hand polished, making them an excellent choice for decorative as well as industrial uses. Standard models feature a tapped hole in either a coarse or fine thread.

Specifications:

- Steel, stainless steel, brass or aluminum construction
- Precision machined from solid bar stock
- Hand polished
- 3/4" to 1 7/8" diameter
- 10-24 through 5/8-11 tapped hole in coarse and fine threads



Steel and Stainless Steel



Steel P/N	Stainless Steel P/N	Thread Size	Knob Dia (A)	Thread Depth (B)	Ship Wt. (lbs)
SBK-031	SSBK-031	10-24	3/4	3/8	0.05
SBK-032	SSBK-032	10-32	3/4	3/8	0.05
SBK-033	SSBK-033	10-24	1	3/8	0.15
SBK-034	SSBK-034	10-32	1	3/8	0.15
SBK-035	SSBK-035	1/4-20	1	1/2	0.15
SBK-036	SSBK-036	1/4-28	1	1/2	0.15
SBK-037	SSBK-037	5/16-18	1	1/2	0.15
SBK-038	SSBK-038	5/16-24	1	1/2	0.15
SBK-056	SSBK-056	3/8-16	1	1/2	0.15
SBK-039	SSBK-039	1/4-20	1 3/8	5/8	0.35
SBK-041	SSBK-041	1/4-28	1 3/8	5/8	0.35
SBK-042	SSBK-042	5/16-18	1 3/8	5/8	0.35
SBK-043	SSBK-043	5/16-24	1 3/8	5/8	0.35
SBK-044	SSBK-044	3/8-16	1 3/8	5/8	0.35
SBK-045	SSBK-045	3/8-24	1 3/8	5/8	0.35
SBK-046	SSBK-046	7/16-20	1 3/8	5/8	0.35
SBK-047	SSBK-047	1/2-13	1 3/8	5/8	0.35
SBK-048	SSBK-048	1/2-20	1 3/8	5/8	0.35
SBK-049	SSBK-049	3/8-16	1 7/8	3/4	0.95
SBK-051	SSBK-051	3/8-24	1 7/8	3/4	0.95
SBK-052	SSBK-052	1/2-13	1 7/8	3/4	0.95
SBK-053	SSBK-053	1/2-20	1 7/8	3/4	0.95
SBK-054	SSBK-054	5/8-11	1 7/8	3/4	0.95
SBK-055	SSBK-055	5/8-18	1 7/8	3/4	0.95



Request Info

1-800-453-1692

www.aboveboardelectronics.com