

## PAN-WAY® SNAP-ON FACEPLATES AND SURFACE MOUNT OUTLET BOXES

Pan-Way® Snap-On Faceplates are designed for use with Panduit surface raceway systems and install faster than conventional screw-on faceplates, reducing labor costs and providing a more aesthetic appearance. Pan-Way® Snap-On Communication Faceplates are available in vertical and horizontal orientation and accept Panduit® Mini-Com® Copper and Fiber Optic Modules. Electrical outlets are available in colors to complement Panduit raceway and are available in 20 A, 106 duplex, rectangular, TVSS and GFCI.



- Snap-on faceplates install without the use of screws providing faster installation and superior aesthetics
- Fast-Snap™ Boxes assemble without the use of screws and accept Pan-Way® Snap-On Faceplates
- Snap-on communication faceplates are available in horizontal or vertical sloped outlet configurations
- Snap-on electrical faceplates are available in 106 duplex or rectangular styles

Surface mount outlet boxes are available for both power and communication applications. They are compatible with Pan-Way® LD, LDPH, LD2P10 and T-45 Raceway Systems. Pan-Way® Snap-On Faceplates mount directly to Cove, TG-70, T-70, Twin-70 raceways, Pan-Way® Fast-Snap™ Boxes and Pan-Pole™ Aluminum Outlet Poles.

A.  
System  
Overview

B1.  
Cable  
Ties

B2.  
Cable  
Accessories

B3.  
Stainless  
Steel  
Ties

C1.  
Wiring  
Duct

C2.  
Surface  
Raceway

C3.  
Abrasion  
Protection

C4.  
Cable  
Management

D1.  
Terminals

D2.  
Power  
Connectors

D3.  
Grounding  
Connectors

E1.  
Labeling  
Systems

E2.  
Labels

E3.  
Pre-Printed  
& Write-On  
Markers

E4.  
Permanent  
Identification

E5.  
Lockout/  
Tagout  
& Safety  
Solutions

F.  
Index

A. System Overview



## Pan-Way® Fast-Snap™ Surface Mount Outlet Boxes

B1. Cable Ties

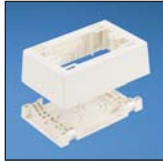
- JB1FS and JBP2FS assemble without the use of screws for faster installation
- JB1FS and JBP2FS are supplied with adhesive backing to speed installation

- JB1FS and JBP2FS accept Pan-Way® Snap-on Faceplates for superior aesthetics

B2. Cable Accessories



JB1FS\*\*-A



JBP1FS\*\*



B3. Stainless Steel Ties

C1. Wiring Duct



JBP2FS\*\*

C2. Surface Raceway

C3. Abrasion Protection

C4. Cable Management

| Part Number      | Part Description  | Color‡    | Std. Pkg. Qty. | Std. Ctn. Qty. |
|------------------|---|-----------|----------------|----------------|
| <b>JB1FSIW-A</b> | Single gang two-piece snap together outlet box with adhesive backing. Box accepts Pan-Way® Snap-On Faceplates. For use with Pan-Way® T-45 or LD profile raceway. 5.00"L x 3.26"W x 1.62"H (127.1mm x 82.7mm x 41.1mm). Breakouts for 1/2", 3/4", or 1" diameter conduit.        | Off White | 1              | 10             |
| <b>JBP1FSIW</b>  | Single gang power rated two-piece snap together outlet box. Box accepts Pan-Way® Snap-On Faceplates. For use with Pan-Way® T-45 or LD, LDP, LDPH, LDS profile raceways. 5.00"L x 3.26"W x 1.62"H (127.1mm x 82.7mm x 41.1mm). Breakouts for 1/2", 3/4", or 1" diameter conduit. | Off White | 1              | 10             |
| <b>JBP2FSIW</b>  | Double gang power rated two-piece snap together outlet box. Box accepts Pan-Way® Snap-On Faceplates. For use with Pan-Way® T-45 or LD profile raceway. 5.00"L x 6.14"W x 1.62"H (127.1mm x 155.9mm x 41.1mm). Breakouts for 1/2", 3/4", or 1" diameter conduit.                 | Off White | 1              | 10             |

‡For other colors replace IW (Off White) with EI (Electric Ivory), IG (International Gray), or WH (White). For complete labeling solutions and product information, reference chart below.



## Pan-Way® Classic Series Snap-On Faceplates for Use with Panduit® Mini-Com® Modules

- Can be used with Pan-Way® Cove, TG-70, T-70, Twin-70, T-45 Raceway Systems, Fast-Snap™ Outlet Boxes and Pan-Pole™ Aluminum Outlet Pole

D1. Terminals



T70FH2



T70FH4

D2. Power Connectors

D3. Grounding Connectors



T70FV2



T70FV4

E1. Labeling Systems

E2. Labels

E3. Pre-Printed & Write-On Markers

E4. Permanent Identification

E5. Lockout/Tagout & Safety Solutions

F. Index

| Part Number     | Part Description   | Color‡    | Std. Pkg. Qty. | Std. Ctn. Qty. |
|-----------------|--|-----------|----------------|----------------|
| <b>T70FH2IW</b> | Snap-on horizontal sloped communication faceplate. Accepts two Panduit® Mini-Com® Modules (not included). No additional mounting hardware required.  | Off White | 1              | 10             |
| <b>T70FH4IW</b> | Snap-on horizontal sloped communication faceplate. Accepts four Panduit® Mini-Com® Modules (not included). No additional mounting hardware required. | Off White | 1              | 10             |
| <b>T70FV2IW</b> | Snap-on vertical sloped communication faceplate. Accepts two Panduit® Mini-Com® Modules (not included). No additional mounting hardware required.    | Off White | 1              | 10             |
| <b>T70FV4IW</b> | Snap-on vertical sloped communication faceplate. Accepts four Panduit® Mini-Com® Modules (not included). No additional mounting hardware required.   | Off White | 1              | 10             |

‡For other colors replace IW (Off White) with EI (Electric Ivory), IG (International Gray), or WH (White). For complete labeling solutions and product information, reference chart below.

## Component Labels for Pan-Way® Classic Series Snap-On Faceplates for Use with Panduit® Mini-Com® Modules and Inserts



### Suggested Label Solutions for TIA/EIA-606-A Compliance

| Faceplate Part Number | Laser/Ink Jet Desktop Printer Label | TDP43MY Thermal Transfer Desktop Printer Label | PanTher™ LS8E Hand-Held Printer Label | Cougar™ LS9 Hand-Held Printer Label |
|-----------------------|-------------------------------------|--|---------------------------------------|-------------------------------------|
| T70FH2IW              | C125X030FJJ                         | C125X030YPT                                    | C125X030FJC                           | T031X000FJC-BK                      |
| T70FV2IW              |                                     |  |                                       |                                     |
| T70FV4IW              |                                     |  |                                       |                                     |
| All T70B Parts        | C252X030FJJ                         | C252X030YPT                                    | C252X030FJC                           | T031X000FJC-BK                      |
| T70FH4IW              |                                     |  |                                       |                                     |





## Pan-Way® Classic Series Snap-On Faceplates for Use with Panduit® Mini-Com® Inserts

- Single gang vertical or horizontal sloped communication faceplates accept one or two Panduit® Mini-Com® Inserts
- Can be used with Pan-Way® Cove, TG-70, T-70, Twin-70, T-45 Raceway Systems, Fast-Snap™ Outlet Boxes and Pan-Pole™ Aluminum Outlet Pole



T70BH1



T70BH2



T70B1



T70B2

| Part Number     | Part Description  | Color‡    | Std. Pkg. Qty. | Std. Ctn. Qty. |
|-----------------|---|-----------|----------------|----------------|
| <b>T70BH1IW</b> | Snap-on horizontal communication faceplate. Accepts one 1/2-size Panduit® Mini-Com® Insert and two modules. No additional mounting hardware required.   | Off White | 1              | 10             |
| <b>T70BH2IW</b> | Snap-on horizontal communication faceplate. Accepts two 1/2-size Panduit® Mini-Com® Inserts and four modules. No additional mounting hardware required. | Off White | 1              | 10             |
| <b>T70B1IW</b>  | Snap-on vertical communication faceplate. Holds one 1/2-size Panduit® Mini-Com® Insert and two modules. No additional mounting hardware required.       | Off White | 1              | 10             |
| <b>T70B2IW</b>  | Snap-on vertical communication faceplate. Holds two 1/2-size Panduit® Mini-Com® Inserts and four modules. No additional mounting hardware required.     | Off White | 1              | 10             |

‡For other colors replace IW (Off White) with EI (Electric Ivory), IG (International Gray), or WH (White). For complete labeling solutions and product information, reference chart on previous page.



## Pan-Way® Classic Series Snap-On Faceplates for Communication/Power

- Can be used with Pan-Way® Cove, TG-70, T-70, Twin-70, T-45 Raceway Systems, Fast-Snap™ Outlet Boxes and Pan-Pole™ Aluminum Outlet Pole



T70P



T70PG



T70PS



T70PGS



T70PN

| Part Number     | Part Description  | Color‡    | Std. Pkg. Qty. | Std. Ctn. Qty. |
|-----------------|---|-----------|----------------|----------------|
| <b>T70PIW</b>   | Snap-on single gang 106 duplex electrical/communication faceplate. Used to cover one NEMA standard 106 duplex electrical outlet. In communication applications, covers one standard 106 duplex communication module frame.  | Off White | 1              | 10             |
| <b>T70PGIW</b>  | Snap-on single gang rectangular electrical/communication faceplate. Used to cover one NEMA standard rectangular electrical outlet. In communication applications, covers one standard rectangular communication module frame.   | Off White | 1              | 10             |
| <b>T70PSIW</b>  | Snap-on single gang 106 duplex communication faceplate. Used to cover one NEMA standard 106 duplex communication module frame. Module frame screw mounts directly to underside of snap-on faceplate. No mounting device needed. Supplied with one mounting screw. Note: Not for use with electrical devices.    | Off White | 1              | 10             |
| <b>T70PGSIW</b> | Snap-on single gang rectangular communication faceplate. Used to cover one NEMA standard rectangular communication module frame. Module frame screw mounts directly to underside of snap-on faceplate. No mounting device needed. Supplied with two mounting screws. Note: Not for use with electrical devices. | Off White | 1              | 10             |
| <b>T70PNIW</b>  | Snap-on single gang blank cover faceplate.  | Off White | 1              | 10             |

‡For other colors replace IW (Off White) with EI (Electric Ivory), IG (International Gray), or WH (White). Component Labels for Pan-Way® Classic Series Snap-On Faceplates for Communication and Power, please reference pg. C2.59.



A. System Overview



## Panduit® NetKey® Snap-On Sloped Keystone Faceplates

B1. Cable Ties

- Accept all Panduit® NetKey® Keystone Copper Modules and Duplex Fiber Optic Modules
- Snap into raceway channel, requires no additional mounting hardware or adapters – greatly reducing installation time
- Lowest cost for moves, adds, and changes

- Tamper resistant
- Can be used with Pan-Way® Cove, TG-70, T70, Twin-70, T-45 Raceway Systems, Fast-Snap™ Outlet Boxes, and Pan-Pole™ Aluminum Outlet Poles

B2. Cable Accessories



NK2HSRF

NK4HSRF

B3. Stainless Steel Ties



NK4VSRF

C1. Wiring Duct

C2. Surface Raceway

C3. Abrasion Protection

C4. Cable Management

| Part Number      | Part Description  | Color‡    | Std. Pkg. Qty. | Std. Ctn. Qty. |
|------------------|---|-----------|----------------|----------------|
| <b>NK2HSRFIW</b> | Snap-on 2-position sloped horizontal faceplate accepts any Panduit® NetKey® Module. Compatible with Panduit® NetKey® Outlet Boxes, Surface Raceway Systems, and Pan-Pole™ Outlet Poles. | Off White | 1              | 10             |
| <b>NK4HSRFIW</b> | Snap-on 4-position sloped horizontal faceplate accepts any Panduit® NetKey® Module. Compatible with Panduit® NetKey® Outlet Boxes, Surface Raceway Systems, and Pan-Pole™ Outlet Poles. | Off White | 1              | 10             |
| <b>NK4VSRFIW</b> | Snap-on 4-position sloped vertical faceplate accepts any Panduit® NetKey® Module. Compatible with Panduit® NetKey® Outlet Boxes, Surface Raceway Systems, and Pan-Pole™ Outlet Poles.   | Off White | 1              | 10             |

Panduit® NetKey® faceplates are NOT compatible with Panduit® Mini-Com® Modules.  
 ‡For other colors replace IW (Off White) with EI (Electric Ivory), IG (International Gray), or WH (White).  
 For complete labeling solutions, reference chart below.

D1. Terminals

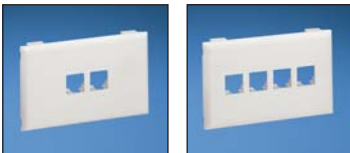


## Panduit® NetKey® Snap-On Flush Universal Keystone Faceplates

- Wider module spacing to accept common manufacturers' keystone modules .900 inches wide or less

- Can be used with Pan-Way® Cove, TG-70, T70, Twin-70, T-45 Raceway Systems, Fast-Snap™ Outlet Boxes, and Pan-Pole™ Aluminum Outlet Poles

D2. Power Connectors



T70KW2

T70KW4

D3. Grounding Connectors

E1. Labeling Systems

E2. Labels

E3. Pre-Printed & Write-On Markers

E4. Permanent Identification

E5. Lockout/Tagout & Safety Solutions

F. Index

| Part Number     | Part Description  | Color‡    | Std. Pkg. Qty. | Std. Ctn. Qty. |
|-----------------|---|-----------|----------------|----------------|
| <b>T70KW2IW</b> | Snap-on 2-position flush mount faceplate accepts any Panduit® NetKey® Module and most other manufacturers' keystone modules. Compatible with Panduit® Fast-Snap™ Outlet Boxes, Surface Raceway Systems, and Pan-Pole™ Outlet Poles. | Off White | 1              | 10             |
| <b>T70KW4IW</b> | Snap-on 4-position flush mount faceplate accepts any Panduit® NetKey® Module and most other manufacturers' keystone modules. Compatible with Panduit® Fast-Snap™ Outlet Boxes, Surface Raceway Systems, and Pan-Pole™ Outlet Poles. | Off White | 1              | 10             |

Panduit® NetKey® faceplates are NOT compatible with Panduit® Mini-Com® Modules.  
 ‡For other colors replace IW (Off White) with EI (Electric Ivory), IG (International Gray), or WH (White).  
 For complete labeling solutions, reference chart below.

### Component Labels for Snap-On “Sloped” (Keystone) Faceplates and Snap-On “Flush” Universal (Keystone) Faceplates

| Suggested Label Solutions for TIA/EIA-606-A Compliance |                                     |                                       |                                     |
|--|-------------------------------------|---------------------------------------|-------------------------------------|
| Faceplate Part Number                                  | Laser/Ink Jet Desktop Printer Label | PanTher™ LS8E Hand-Held Printer Label | Cougar™ LS9 Hand-Held Printer Label |
| NK2HSRFIW<br>T70KW2IW                                  | C125X030FJJ                         | C125X030FJC                           | T031X000FJC-BK                      |
| NK4VSRFIW  | 2-C125X030FJJ                       | 2-C125X030FJC                         |                                     |
| NK4HSRFIW<br>T70KW4IW                                  | C261X030FJJ                         | C125X030FJC                           |                                     |





## Pan-Way® Snap-On Faceplates for SYSTIMAX\* Communication Modules

- Can be used with Pan-Way® Cove, TG-70, T70, Twin-70, T-45 Raceway Systems, Fast-Snap™ Outlet Boxes, and Pan-Pole™ Aluminum Outlet Poles



T70L2



T70L4



T70LV2



T70LV4

| Part Number     | Part Description   | Color‡    | Std. Pkg. Qty. | Std. Ctn. Qty. |
|-----------------|--|-----------|----------------|----------------|
| <b>T70L2IW</b>  | Snap-on horizontal communication faceplate designed to accept two SYSTIMAX* communication modules (not included). Can be used with Panduit surface raceway systems and boxes that accept 70mm faceplates. No additional mounting hardware required.  | Off White | 1              | 10             |
| <b>T70L4IW</b>  | Snap-on horizontal communication faceplate designed to accept four SYSTIMAX* communication modules (not included). Can be used with Panduit surface raceway systems and boxes that accept 70mm faceplates. No additional mounting hardware required. | Off White | 1              | 10             |
| <b>T70LV2IW</b> | Snap-on vertical communication faceplate designed to accept two SYSTIMAX* communication modules (not included). Can be used with Panduit surface raceway systems and boxes that accept 70mm faceplates. No additional mounting hardware required.    | Off White | 1              | 10             |
| <b>T70LV4IW</b> | Snap-on vertical communication faceplate designed to accept four SYSTIMAX* communication modules (not included). Can be used with Panduit surface raceway systems and boxes that accept 70mm faceplates. No additional mounting hardware required.   | Off White | 1              | 10             |

‡For other colors replace IW (Off White) with EI (Electric Ivory), IG (International Gray), or WH (White).

\*SYSTIMAX is a registered trademark of Commscope, Inc.

For complete labeling solutions, reference chart below.

### Component Labels for Pan-Way® Snap-On Faceplates for use with SYSTIMAX\* Communication Modules

| Suggested Label Solutions for TIA/EIA-606-A Compliance |                                     |                                       |                                     |
|--|-------------------------------------|---------------------------------------|-------------------------------------|
| Faceplate Part Number                                  | Laser/Ink Jet Desktop Printer Label | PanTher™ LS8E Hand-Held Printer Label | Cougar™ LS9 Hand-Held Printer Label |
| T70L2IW<br>T70LV2IW                                    | C125X030FJJ                         | C125X030FJC                           | T031X000FJC-BK                      |
| T70LV4IW   | 2-C125X030FJJ                       | 2-C125X030FJC                         |                                     |
| T70L4IW  | C261X030FJJ                         | C125X030FJC                           |                                     |

\*SYSTIMAX is a registered trademark of Commscope, Inc.

A.  
System  
Overview

B1.  
Cable  
Ties

B2.  
Cable  
Accessories

B3.  
Stainless  
Steel  
Ties

C1.  
Wiring  
Duct

C2.  
Surface  
Raceway

C3.  
Abrasion  
Protection

C4.  
Cable  
Management

D1.  
Terminals

D2.  
Power  
Connectors

D3.  
Grounding  
Connectors

E1.  
Labeling  
Systems

E2.  
Labels

E3.  
Pre-Printed  
& Write-On  
Markers

E4.  
Permanent  
Identification

E5.  
Lockout/  
Tagout  
& Safety  
Solutions

F.  
Index





A.  
System  
Overview



## Pan-Way® Snap-On Faceplates for Nordx/CDT\* Communication Modules

B1.  
Cable Ties

- Can be used with Pan-Way® Cove, TG-70, T70, Twin-70, T-45 Raceway Systems, Fast-Snap™ Outlet Boxes, and Pan-Pole™ Aluminum Outlet Poles

B2.  
Cable  
Accessories



T70N2

B3.  
Stainless  
Steel Ties



T70N4

C1.  
Wiring  
Duct

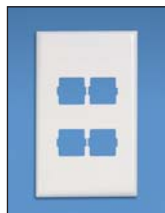
C2.  
Surface  
Raceway



T70NV2

C3.  
Abrasion  
Protection

C4.  
Cable  
Management



T70NV4

D1.  
Terminals

D2.  
Power  
Connectors

D3.  
Grounding  
Connectors

E1.  
Labeling  
Systems

E2.  
Labels

E3.  
Pre-Printed  
& Write-On  
Markers

E4.  
Permanent  
Identification

E5.  
Lockout/  
Tagout  
& Safety  
Solutions

F.  
Index

| Part Number     | Part Description  | Color‡    | Std. Pkg. Qty. | Std. Ctn. Qty. |
|-----------------|---|-----------|----------------|----------------|
| <b>T70N2IW</b>  | Snap-on horizontal communication faceplate designed to accept two Nordx/CDT* communication modules (not included). Can be used with Panduit surface raceway systems and boxes that accept 70mm faceplates. No additional mounting hardware required.  | Off White | 1              | 10             |
| <b>T70N4IW</b>  | Snap-on horizontal communication faceplate designed to accept four Nordx/CDT* communication modules (not included). Can be used with Panduit surface raceway systems and boxes that accept 70mm faceplates. No additional mounting hardware required. | Off White | 1              | 10             |
| <b>T70NV2IW</b> | Snap-on vertical communication faceplate designed to accept two Nordx/CDT* communication modules (not included). Can be used with Panduit surface raceway systems and boxes that accept 70mm faceplates. No additional mounting hardware required.    | Off White | 1              | 10             |
| <b>T70NV4IW</b> | Snap-on vertical communication faceplate designed to accept two Nordx/CDT* communication modules (not included). Can be used with Panduit surface raceway systems and boxes that accept 70mm faceplates. No additional mounting hardware required.    | Off White | 1              | 10             |

‡For other colors replace IW (Off White) with EI (Electric Ivory).

\*Nordx/CDT is a registered trademark of Nordx/CDT, Inc.

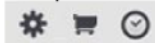
For complete labeling solutions, reference chart below.

### Component Labels for Pan-Way® Snap-On Faceplates for use with Nordx/CDT\* Communication Modules

| Suggested Label Solutions for TIA/EIA-606-A Compliance |                                     |                                       |                                     |
|--|-------------------------------------|---------------------------------------|-------------------------------------|
| Faceplate Part Number                                  | Laser/Ink Jet Desktop Printer Label | PanTher™ LS8E Hand-Held Printer Label | Cougar™ LS9 Hand-Held Printer Label |
| T70N2IW<br>T70NV2IW                                    | C125X030FJJ                         | C125X030FJC                           | T031X000FJC-BK                      |
| T70NV4IW   | 2-C125X030FJJ                       | 2-C125X030FJC                         |                                     |
| T70N4IW  | C261X030FJJ                         | C125X030FJC                           |                                     |

\*Nordx/CDT is a registered trademark of Nordx/CDT, Inc.

For complete labeling solutions, reference charts on pages E2.4 and E2.5.





## Pan-Way® Low Voltage Surface Mount Outlet Boxes

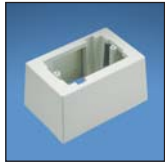
- JBX3510 assembles without the use of screws for faster installation • JB1 and JB1D are a one-piece design requiring no assembly
- JBX3510, JB1, and JB1D are supplied with adhesive backing to speed installation



**JBX3510\*\*-A**



**JB1\*\*-A**



**JB1D\*\*-A**



**JBP2**



**JBP2D**



**RJBX3510**



**JBA-X**



**JB1FS\*\*-A**

| Part Number        | Part Description  | Color‡    | Std. Pkg. Qty. | Std. Ctn. Qty. |
|--------------------|---|-----------|----------------|----------------|
| <b>JBX3510IW-A</b> | Single gang two-piece snap together outlet box with adhesive backing. Box accepts Pan-Way® Screw-On Faceplates or any NEMA standard single gang faceplate. For use with Pan-Way® T45 or LD profile raceway. 5.00"L x 3.26"W x 1.62"H (127.1mm x 82.7mm x 41.1mm). Breakouts for 1/2", 3/4", or 1" diameter conduit. | Off White | 1              | 10             |
| <b>JB1IW-A</b>     | Single gang one-piece outlet box with adhesive backing. Box accepts Pan-Way® Screw-On Faceplates or any NEMA standard single gang faceplate. For use with Pan-Way® LD profile raceway. 5.09"L x 3.34"W x 1.75"H (129.4mm x 85.0mm x 44.4mm). Breakouts for 1/2", 3/4", or 1" diameter conduit.                      | Off White | 1              | 10             |
| <b>JB1DIW-A</b>    | Single gang one-piece deep outlet box with adhesive backing. Box accepts Pan-Way® Screw-On Faceplates or any NEMA standard single gang faceplate. For use with Pan-Way® LD profile raceway. 5.23"L x 3.48"W x 2.75"H (133.0mm x 88.5mm x 69.8mm). Breakouts for 1/2", 3/4", or 1" diameter conduit.                 | Off White | 1              | 10             |
| <b>JBP2IW</b>      | Double gang two-piece screw together outlet box. Box accepts Pan-Way® Screw-On Faceplates or any NEMA standard double gang faceplates. For use with Pan-Way® LD profile raceway. 5.05"L x 5.05"W x 1.62"H (128.2mm x 128.2mm x 41.1mm). Breakouts for 1/2" or 3/4" diameter conduit.                                | Off White | 1              | 10             |
| <b>JBP2DIW</b>     | Double gang two-piece screw together deep outlet box. Box accepts Pan-Way® Screw-On Faceplates or any NEMA standard double gang faceplate. For use with Pan-Way® T-45 or LD profile raceway. 5.19"L x 5.19"W x 2.75"H (131.9mm x 131.9mm x 69.8mm). Breakouts for 1/2", 3/4", or 1" diameter conduit.               | Off White | 1              | 10             |
| <b>RJBX3510IW</b>  | Single gang two-piece screw together round outlet box. Box accepts UL/CSA devices not to exceed 10 lbs. (5 lbs. per CSA). For use with Pan-Way® LD profile raceway. Dia. = 5.48"D x 1.14"H (139.2mm x 29.0mm). Breakouts for 3/4" or 1" diameter conduit.   | Off White | 1              | 5              |
| <b>JBA-X</b>       | In-wall box adapter. Adapts single gang surface mount outlet boxes to in-wall conduit boxes.  | —         | 10             | 100            |
| <b>JB1FSIW-A</b>   | Single gang two-piece snap together outlet box with adhesive backing. Box accepts Pan-Way® Snap-On Faceplates. For use with Pan-Way® T-45 or LD profile raceway. 5.00"L x 3.26"W x 1.62"H (127.1mm x 82.7mm x 41.1mm). Breakouts for 1/2", 3/4", or 1" diameter conduit.  | Off White | 1              | 10             |

‡For other colors replace IW (Off White) with EI (Electric Ivory), IG (International Gray), or WH (White).

A. System Overview

B1. Cable Ties

B2. Cable Accessories

B3. Stainless Steel Ties

C1. Wiring Duct

C2. Surface Raceway

C3. Abrasion Protection

C4. Cable Management

D1. Terminals

D2. Power Connectors

D3. Grounding Connectors

E1. Labeling Systems

E2. Labels

E3. Pre-Printed & Write-On Markers

E4. Permanent Identification

E5. Lockout/Tagout & Safety Solutions

F. Index



A. System Overview

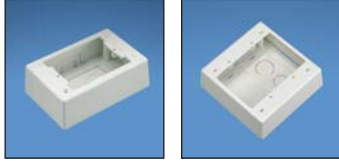


## Pan-Way® Power Rated Surface Mount Outlet Boxes

B1. Cable Ties

- JBP1FS and JBP2FS assemble without the use of screws for faster installation
- JBP1FS and JBP2FS are supplied with adhesive backing to speed installation
- JBP1FS and JBP2FS accept Pan-Way® Snap-on Faceplates for superior aesthetics

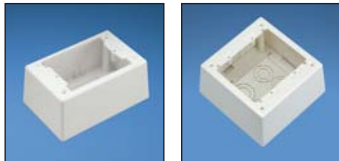
B2. Cable Accessories



JBP1

JBP2

B3. Stainless Steel Ties



JBP1D

JBP2D

C1. Wiring Duct

C2. Surface Raceway



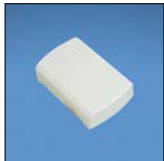
JBP1E

JBP1I

C3. Abrasion Protection

C4. Cable Management

D1. Terminals



PSJBX

D2. Power Connectors

D3. Grounding Connectors

E1. Labeling Systems

E2. Labels

E3. Pre-Printed & Write-On Markers

E4. Permanent Identification

E5. Lockout/Tagout & Safety Solutions

F. Index

| Part Number    | Part Description  | Color‡    | Std. Pkg. Qty. | Std. Ctn. Qty. |
|----------------|---|-----------|----------------|----------------|
| <b>JBP1IW</b>  | Single gang two-piece screw together outlet box. Box accepts Pan-Way® Screw-On Faceplates or any NEMA standard single gang faceplate. For use with Pan-Way® LD profile raceway. 5.19"L x 3.45"W x 1.75"H (131.9mm x 87.7mm x 44.4mm). Breakouts for 1/2", 3/4", or 1" diameter conduit.   | Off White | 1              | 10             |
| <b>JBP2IW</b>  | Double gang two-piece screw together outlet box. Box accepts Pan-Way® Screw-On Faceplates or any NEMA standard double gang faceplates. For use with Pan-Way® LD profile raceway. 5.05"L x 5.05"W x 1.62"H (128.2mm x 128.2mm x 41.1mm). Breakouts for 1/2" or 3/4" diameter conduit.  | Off White | 1              | 10             |
| <b>JBP1DIW</b> | Single gang two-piece screw together deep outlet box. Box accepts Pan-Way® Screw-On Faceplates or any NEMA standard single gang faceplate. For use with Pan-Way® T-45, LD2P10 (when used with JBD1), or LD profile raceway. 5.19"L x 3.45"W x 2.75"H (131.9mm x 87.7mm x 69.8mm). Breakouts for 1/2", 3/4", or 1" diameter conduit. | Off White | 1              | 10             |
| <b>JBP2DIW</b> | Double gang two-piece screw together deep outlet box. Box accepts Pan-Way® Screw-On Faceplates or any NEMA standard double gang faceplate. For use with Pan-Way® T-45 or LD profile raceway. 5.19"L x 5.19"W x 2.75"H (131.9mm x 131.9mm x 69.8mm). Breakouts for 1/2", 3/4", or 1" diameter conduit.                               | Off White | 1              | 10             |
| <b>JBP1EIW</b> | Single gang two-piece screw together extension outlet box. Box accepts Pan-Way® Screw-On Faceplates or any NEMA standard single gang faceplate. For use with Pan-Way® LD profile raceway. 4.99"L x 3.30"W x 1.00"H (126.7mm x 83.8mm x 25.4mm). Breakouts for 1/2", 3/4", or 1" diameter conduit.                                   | Off White | 1              | 10             |
| <b>JBP1IIW</b> | Single gang two-piece screw together intermediate outlet box. Box accepts Pan-Way® Screw-On Faceplates or any NEMA standard single gang faceplate. For use with Pan-Way® LD profile raceway. 5.12"L x 3.38"W x 2.27"H (130.2mm x 86.0mm x 57.7mm). Breakouts for 1/2" or 3/4" diameter conduit.                                     | Off White | 1              | 10             |
| <b>PSJBXIW</b> | Single gang two-piece snap together power source box. For use with Pan-Way® LDPH3, 5, 10, or LDS3, or 5 profile raceway. 5.02"L x 3.32"W x 1.31"H (127.6mm x 83.0mm x 33.3mm). Breakouts for 1/2", 3/4", or 1" diameter conduit.  | Off White | 1              | 10             |

‡For other colors replace IW (Off White) with EI (Electric Ivory), IG (International Gray), or WH (White).







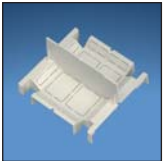
## Pan-Way® Power Rated Surface Mount Outlet Boxes (continued)



JBD1



JBP2S



JBD2



JBP1FS



JBP2FS



JBP1MR20



JBP1MD20



RJBX3510

| Part Number       | Part Description  | Color‡    | Std. Pkg. Qty. | Std. Ctn. Qty. |
|-------------------|---|-----------|----------------|----------------|
| <b>JBD1</b>       | Single gang pass-through divider. Allows power and communication outlets to be routed in series. For use with JBP1 or JBP1D when installing LD2P10 raceway.   | Off White | 1              | 10             |
| <b>JBP2SIW</b>    | Double gang two-piece screw together divided outlet box. Box accepts Pan-Way® Screw-On Faceplates or any NEMA standard double gang faceplate. For use with Pan-Way® T-45 or LD profile raceway. 5.05"L x 5.05"W x 1.62"H (128.2mm x 128.2mm x 41.1mm). Breakouts for 1/2" or 3/4" diameter conduit. | Off White | 1              | 10             |
| <b>JBD2</b>       | Double gang pass-through divider. Allows power and communication outlets to be routed in series. For use with JBP2D when installing LD2P10 raceway.   | Off White | 1              | 10             |
| <b>JBP1FSIW</b>   | Single gang power rated two-piece snap together outlet box. Box accepts Pan-Way® Snap-On Faceplates. For use with Pan-Way® T-45 or LD, LDP, LDPH, LDS profile raceways. 5.00"L x 3.26"W x 1.62"H (127.1mm x 82.7mm x 41.1mm). Breakouts for 1/2", 3/4", or 1" diameter conduit.                     | Off White | 1              | 10             |
| <b>JBP2FSIW</b>   | Double gang power rated two-piece snap together outlet box. Box accepts Pan-Way® Snap-On Faceplates. For use with Pan-Way® T-45 or LD profile raceway. 5.00"L x 6.14"W x 1.62"H (127.1mm x 155.9mm x 41.1mm). Breakouts for 1/2", 3/4", or 1" diameter conduit.                                     | Off White | 1              | 10             |
| <b>JBP1MR20IW</b> | Single gang two-piece power rated low profile snap together outlet box. Includes 20A U.S. style rectangular electrical outlet. For use with Pan-Way® LDPH3, 5, 10 or LDS3 or 5 profile raceway only. 4.84"L x 2.90"W x 1.20"H (122.9mm x 73.6mm x 30.4mm).  | Off White | 1              | 10             |
| <b>JBP1MD20IW</b> | Single gang two-piece power rated low profile snap together outlet box. Includes 20A U.S. style 106 duplex electrical outlet. For use with Pan-Way® LDPH3, 5, 10 or LDS3 or 5 profile raceway only. 4.84"L x 2.90"W x 1.22"H (122.9mm x 73.6mm x 30.9mm).   | Off White | 1              | 10             |
| <b>RJBX3510IW</b> | Single gang two-piece screw together round outlet box. Box accepts UL/CSA devices not to exceed 10lbs. (5lbs. per CSA). For use with Pan-Way® LD profile raceway. Dia. = 5.48"D x 1.14"H (139.2mm x 29.0mm). Breakouts for 3/4" or 1" diameter conduit.   | Off White | 1              | 5              |

‡For other colors replace IW (Off White) with EI (Electric Ivory), IG (International Gray), or WH (White).

A. System Overview

B1. Cable Ties

B2. Cable Accessories

B3. Stainless Steel Ties

C1. Wiring Duct

C2. Surface Raceway

C3. Abrasion Protection

C4. Cable Management

D1. Terminals

D2. Power Connectors

D3. Grounding Connectors

E1. Labeling Systems

E2. Labels

E3. Pre-Printed & Write-On Markers

E4. Permanent Identification

E5. Lockout/Tagout & Safety Solutions

F. Index



A. System Overview



## Pan-Way® Classic Series Faceplates for Power and Communication Applications

B1. Cable Ties

- For use with JBP2S or JBP2D outlet boxes

B2. Cable Accessories



FP2DC



FP2RC

B3. Stainless Steel Ties

C1. Wiring Duct



CP106



CP106\*\*-2G

C2. Surface Raceway

C3. Abrasion Protection



CPG



CPG\*\*-2G

C4. Cable Management

D1. Terminals



CPN



CPN\*\*-2G

D2. Power Connectors

D3. Grounding Connectors

E1. Labeling Systems

E2. Labels

E3. Pre-Printed & Write-On Markers

E4. Permanent Identification

E5. Lockout/Tagout & Safety Solutions

F. Index

| Part Number       | Part Description   | Color‡    | Std. Pkg. Qty. | Std. Ctn. Qty. |
|-------------------|--|-----------|----------------|----------------|
| <b>FP2DCIW</b>    | Covers one NEMA standard 106 duplex electrical receptacle and accepts Panduit® Mini-Com® 1/2-size, 1/3-size, and 2/3-size Inserts. For product application, please reference LD profile raceway section.               | Off White | 1              | 10             |
| <b>FP2RCIW</b>    | Covers one NEMA standard rectangular electrical receptacle and accepts Panduit® Mini-Com® 1/2-size, 1/3-size, and 2/3-size Inserts. For product application, please reference LD profile raceway section.              | Off White | 1              | 10             |
| <b>CP106IW</b>    | Screw-on single gang 106 duplex faceplate. Covers one NEMA standard 106 duplex electrical outlet or one standard 106 communication module frame.   | Off White | 1              | 10             |
| <b>CP106IW-2G</b> | Screw-on double gang 106 duplex faceplate. Covers two NEMA standard 106 duplex electrical outlets or two standard 106 communication module frames.   | Off White | 1              | 10             |
| <b>CPGIW</b>      | Screw-on single gang rectangular faceplate. Covers one NEMA standard rectangular electrical outlet or one standard rectangular communication module frame.   | Off White | 1              | 10             |
| <b>CPGIW-2G</b>   | Screw-on double gang rectangular faceplate. Covers two NEMA standard rectangular electrical outlets or two standard rectangular communication module frames.   | Off White | 1              | 10             |
| <b>CPNIW</b>      | Screw-on single gang blank cover faceplate. Can be used with Pan-Way® Cove, TG-70, T-70, Twin-70, T-45 Raceway Systems, Fast-Snap™ Outlet Boxes and Pan-Pole™ Aluminum Outlet Pole. Supplied with two mounting screws. | Off White | 1              | 10             |
| <b>CPNIW-2G</b>   | Screw-on double gang blank cover faceplate. For use with Pan-Way® Surface Mount Outlet Boxes. Supplied with four mounting screws.  | Off White | 1              | 10             |

‡For other colors replace suffix IW (Off White) with EI (Electric Ivory), IG (International Gray), WH (White), or AL (Almond).

All faceplates supplied with mounting screws.

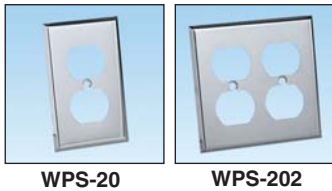
For complete labeling solutions, reference label chart below.

### Component Labels for Pan-Way® Classic Series Faceplates for Power and Communication Applications

| Faceplate Part Number | Suggested Label Solutions for TIA/EIA-606-A Compliance |  |                                       |                                     |
|-----------------------|--|--|---------------------------------------|-------------------------------------|
|                       | Laser/Ink Jet Desktop Printer Label                    | TDP43MY Thermal Transfer Desktop Printer Label | PanTher™ LS8E Hand-Held Printer Label | Cougar™ LS9 Hand-Held Printer Label |
| CPGIW T70PGS          | C125X030FJJ  | C125X030YPT                                    | C125X030FJC                           | T031X000FJC-BK                      |
| CPGIW-2G FP2RC        | 2-C125X030FJJ  | 2-C125X030YPT                                  | 2-C125X030FJC                         | T031X000FJC-BK                      |
| T70PG                 | C261X030FJJ  | T031X000FJT                                    | C261X030FJC                           | T031X000FJC-BK                      |



## UL LISTED SP® Pan-Way® Stainless Steel Faceplates



| Part Number    | Part Description   | Std. Pkg. Qty. | Std. Ctn. Qty. |
|----------------|--|----------------|----------------|
| <b>WPS-20</b>  | Stainless steel single gang 106 duplex screw-on faceplate. Covers one NEMA standard 106 duplex electrical outlet or one standard 106 communication module frame.   | 1              | 10             |
| <b>WPS-202</b> | Stainless steel double gang 106 duplex screw-on faceplate. Covers two NEMA standard 106 duplex electrical outlets or two standard 106 communication module frames. | 1              | 10             |

All faceplates supplied with mounting screws.

## UL LISTED Pan-Way® Electrical Outlets

- Electrical outlets are standard electrical devices that fit into Pan-Way® Outlet Boxes or any NEMA standard outlet boxes

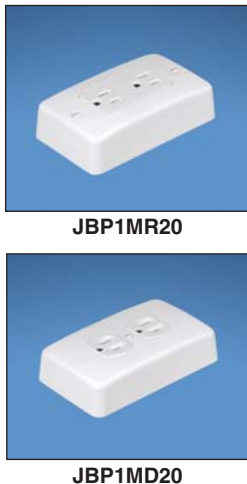


| Part Number      | Part Description   | Color‡    | Std. Pkg. Qty. |
|------------------|--|-----------|----------------|
| <b>EDU20IW-X</b> | 20 A specification grade 106 duplex outlet.  | Off White | 10             |
| <b>ERU20IW-X</b> | 20 A specification grade rectangular outlet.   | Off White | 10             |
| <b>ETU20IW-X</b> | 20 A specification grade TVSS rectangular outlet (transient voltage surge suppressor). | Off White | 10             |
| <b>EGU20IW-X</b> | 20 A specification grade GFCI rectangular outlet (ground fault circuit interrupter).   | Off White | 10             |

‡For other colors, replace IW (Off White) with EI (Electric Ivory).  
All outlets supplied with mounting screws.

## UL LISTED SP® Pan-Way® Surface Mount Outlet Box with 20 A Electrical Outlet

- Supplied with a 20 A U.S. style rectangular electrical outlet and a 20 A 106 duplex electrical outlet.



| Part Number       | Part Description  | Color‡    | Std. Pkg. Qty. | Std. Ctn. Qty. |
|-------------------|---|-----------|----------------|----------------|
| <b>JBP1MR20IW</b> | Single gang two-piece power rated low profile snap together outlet box. Includes 20 A U.S. style rectangular electrical outlet. For use with Pan-Way® LDPH3, 5, 10 or LDS3 or 5 profile raceway only. 4.84"L x 2.90"W x 1.20"H (122.9mm x 73.6mm x 30.4mm). | Off White | 1              | 10             |
| <b>JBP1MD20IW</b> | Single gang two-piece power rated low profile snap together outlet box. Includes 20 A U.S. style 106 duplex electrical outlet. For use with Pan-Way® LDPH3, 5, 10 or LDS3 or 5 profile raceway only. 4.84"L x 2.90"W x 1.22"H (122.9mm x 73.6mm x 30.9mm).  | Off White | 1              | 10             |

‡For other color replace IW (Off White) with EI (Electric Ivory).



A.  
System  
Overview

## Selection Chart for using Pan-Way® Surface Raceway with Pan-Way® Surface Mount Outlet Boxes

B1.  
Cable Ties

How to use this chart:

1. Locate the desired Pan-Way® Raceway in the left column.
2. Locate the desired Pan-Way® Outlet Box in the top row.
3. Match up the raceway with the outlet box to see if they are compatible (Y = yes, N = no).
4. Select correct surface mount outlet box.

B2.  
Cable  
Accessories

B3.  
Stainless  
Steel Ties

C1.  
Wiring  
Duct

C2.  
Surface  
Raceway

C3.  
Abrasion  
Protection

C4.  
Cable  
Management

D1.  
Terminals

D2.  
Power  
Connectors

D3.  
Grounding  
Connectors

E1.  
Labeling  
Systems

E2.  
Labels

E3.  
Pre-Printed  
& Write-On  
Markers

E4.  
Permanent  
Identification

E5.  
Lockout/  
Tagout  
& Safety  
Solutions

F.  
Index

| Pan-Way® Surface Mount Outlet Boxes |                                    |      |       |       |               |                          |                      |       |  |
|-------------------------------------|------------------------------------|------|-------|-------|---------------|--------------------------|----------------------|-------|--|
| Low Voltage or Fiber Optic ONLY     | Power, Low Voltage, or Fiber Optic |      |       |       |               |                          |                      |       |  |
| JB1, JB1D<br>JB1FS<br>JBX3510       | RJBX3510                           | JBP1 | JBP1D | JBP1E | JBP1I<br>JBP2 | JBP2S<br>JBP2D<br>JBP2FS | JBP1MR20<br>JBP1MD20 | PSJBX |  |

| Type LD (Low Voltage, or Fiber Optic ONLY)       |                       |   |   |          |   |   |   |   |   |
|--|-----------------------|---|---|----------|---|---|---|---|---|
| LD3  | Y                     | Y | Y | Y        | Y | Y | Y | N | Y |
| LD5  | Y                     | Y | Y | Y        | Y | Y | Y | N | Y |
| LD10   | Y                     | Y | Y | Y        | Y | Y | Y | N | Y |
| Type LDPH (Power, Low Voltage, or Fiber Optic)   |                       |   |   |          |   |   |   |   |   |
| LDPH3  | Y                     | Y | Y | Y        | Y | Y | Y | Y | Y |
| LDPH5  | Y                     | Y | Y | Y        | Y | Y | Y | Y | Y |
| LDPH10   | Y                     | Y | Y | Y        | Y | Y | Y | Y | Y |
| Type LDS (Power, Low Voltage, or Fiber Optic)    |                       |   |   |          |   |   |   |   |   |
| LDS3   | Y                     | Y | Y | Y        | Y | Y | Y | Y | Y |
| LDS5   | Y                     | Y | Y | Y        | Y | Y | Y | Y | Y |
| Type LD2P10 (Power, Low Voltage, or Fiber Optic) |                       |   |   |          |   |   |   |   |   |
| LD2P10   | N                     | N | N | Y w/JBD1 | N | N | Y | N | N |
| Type T-45 (Power, Low Voltage, or Fiber Optic)   |                       |   |   |          |   |   |   |   |   |
| T-45   | Y (JB1FS and JBX3510) | N | N | Y        | N | N | Y | N | N |