

SFP+ 10 Gb/s Direct Attach Passive Cable Assemblies

- Meet SFF-8431, 8432, 8472 industry standards to support 10 Gigabit Ethernet
- Ideal for Top of Rack (ToR) switch to server applications
- Passive connection provides a low cost, short reach interconnect option without additional power requirements
- Constructed with high speed, 2-pair, twinaxial cable, factory terminated to SFP+ 10 Gb/s hot pluggable modular connectors
- 100% performance tested
- Low profile latching mechanism in connector allows assemblies to be installed side by side or stacked on top of each other providing maximum port density in high density installations
- Small diameter cable design enables superior cable management and improved air flow
- Robust strain relief boot provides proper bend radius control for consistent reliability
- Variety of standard lengths allow more precise deployment, improved cable management and cost efficiencies



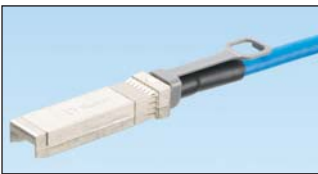
Part Number	Part Description	Length (m)	AWG Size	Cable Color	Std. Pkg. Qty.	Std. Ctn. Qty.
PSF1PXA1MBU*	High speed twinaxial cable assembly with SFP+ 10Gbps hot pluggable modular connectors on each end.	1	30	Blue	1	10
PSF1PXD4MBU‡	High speed twinaxial cable assembly with SFP+ 10Gbps hot pluggable modular connectors on each end.	4	24	Blue	1	10

*For lengths other than 1 meter (0.5 meters to 3.5 meters, increments of 0.5 meter) change the length designation in the part number to the desired length. For standard cable colors other than Blue, replace suffix BU (Blue) with WH (White) or BL (Black). For example, the part number for a white, 0.5 meter cord is PSF1PXA0.5MWH.

‡ For lengths other than 4 meters (4 to 7 meters, increments of 0.5 meter) change the length designation in the part number to the desired length. For standard cable colors other than Blue, replace suffix BU (Blue) with WH (White) or BL (Black). For example, the part number for a white, 7-meter cord is PSF1PD7MWH.

SFP+ 10 Gb/s Direct Attach Active Cable Assemblies

- Meet SFF-8431, 8432, 8472 industry standards to support 10 Gigabit Ethernet
- Ideal for Top of Rack (ToR) and End of Row (EoR) switch to server applications
- Fibre Channel over Ethernet (FCoE) capable
- Connector contains low power circuitry to extend beyond passive cable assemblies
- Constructed with high speed, 2-pair, twinaxial cable, factory terminated to SFP+ 10Gbps hot pluggable modular connectors
- 100% performance tested
- Low profile latching mechanism in connector allows assemblies to be installed side by side or stacked on top of each other providing maximum port density in high density installations
- Small diameter cable design enables superior cable management and improved air flow
- Robust strain relief boot provides proper bend radius control for consistent reliability
- Variety of standard lengths allow more precise deployment, improved cable management, and cost efficiencies



Part Number	Part Description	Length (m)	AWG Size	Cable Color	Std. Pkg. Qty.	Std. Ctn. Qty.
PSF1AXD7MBU*	High speed twinaxial cable assembly with SFP+ 10 Gb/s hot pluggable, active modular connectors on each end.	7	24	Blue	1	10
PSF1AXA3MBU**	High speed twinaxial cable assembly with SFP+ 10 Gb/s hot pluggable modular connectors on each end.	3	30	Blue	1	10

*For lengths other than 7 meter (7 to 15 meters, increments of one meter) change the length designation in the part number to the desired length. For standard cable colors other than Blue, replace suffix BU (Blue) with WH (White) or BL (Black). For example, the part number for a white 10-meter cord is PSF1AXD10MWH.

**Also available in 5 meters. For standard cable colors other than Blue, replace suffix BU (Blue) with WH (White) or BL (Black). The part number for a black 5-meter cord is PSF1AXA5MBL.

QSFP+ 40Gig Direct Attach Copper Cable Assemblies

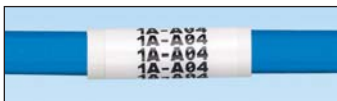
- Compliant to IEEE 802.3ba and SFF-8436 for use in 40GBASE-CR4 applications
- EEPROM compliant to SFF-8436 ensures interoperability with 40 Gigabit Ethernet equipment
- Low latency is ideal for use in high performance computer clustering, financial trading, and other latency sensitive applications
- Low profile latching allows high density belly to belly installation
- Constructed with 8-pair twinaxial cable factory terminated to QSFP+ 40 Gb/s hot pluggable modular connectors
- 100% tested for assured system performance
- Available for 40GBASE-CR4 Ethernet applications for distances up to 7 meters and InfiniBand QDR applications up to 5 meters
- Advanced proprietary connector paddle card design reduces crosstalk



PQSFPXA1MBU

Part Number	Part Description	Length (m)	AWG Size	Cable Color	Std. Pkg. Qty.	Std. Ctn. Qty.
40GBASE-CR4						
PQSFPXA1MBU	40GBASE-CR4 Ethernet high speed twin axial cable assembly with QSFP+ 40 Gb/s hot pluggable modular connectors on each end.	1	30	Blue	1	10
PQSFPXA2MBU		2	30	Blue	1	10
PQSFPXA3MBU		3	30	Blue	1	10
PQSFPXB4MBU		4	28	Blue	1	10
PQSFPXC5MBU		5	26	Blue	1	10
PQSFPXD6MBU		6	24	Blue	1	10
PQSFPXD7MBU		7	24	Blue	1	10
InfiniBand QDR						
PQSFPQA1MBU	InfiniBand QDR high speed twinaxial cable assembly with QSFP+ 40 Gb/s hot pluggable modular connectors on each end.	1	30	Blue	1	10
PQSFPQA2MBU		2	30	Blue	1	10
PQSFPQB3MBU		3	30	Blue	1	10
PQSFPQC4MBU		4	26	Blue	1	10
PQSFPQD5MBU		5	24	Blue	1	10

Labels for Cable



Suggested Label Solutions for TIA/EIA-606-A Compliance				
Cable Part Number	Laser/Ink Jet Desktop Printer Label	TDP43ME Thermal Transfer Desktop Printer Label	PanTher™ LS8E Hand-Held Printer Label	Cougar™ LS9 Hand-Held Printer Label
All cable assemblies on this page	S100X225YAJ	S100X225VATY	S100X225VAC	T100X000CBC-BK

For complete labeling solutions and product information, reference charts on pages O.1 – O.25.

QSFP+ to Four SFP+ Copper Hydra Cable Assemblies

- Compliant to SFF-8431 and 8436, which allows compatibility with 40GBASE-CR4 QSFP+ and 10 GbE SFP+ enabled equipment; hot pluggable to QSFP+/SFP+ compliant host ports
- Ideal for Top of Rack (ToR) applications
- EEPROM compliant to SFF-8472 and 8436, which ensures interoperability with 10 GbE and 40 GbE equipment
- Passive low power provides a low cost alternative to fiber optics up to 3.5 meters
- Low latency performance is ideal for high performance computer clustering, financial trading, and other latency sensitive applications
- Constructed of high speed twinaxial cable factory terminated to QSFP+ and SFP+ modular connectors
- Advanced connector design and continuous shielding throughout the assembly provide excellent resistance to EMI and alien crosstalk
- Tak-Ty® Hook & Loop Cable Ties allow adjustable breakout points on the hydra end of the cable assembly
- QSFP+ connectors triple switch port density, which is ideal for high density deployment
- Robust easy-to-use latching feature allows high density belly-to-belly installation



PHQ4SFPXA1MBL

Part Number	Part Description	Length (m)	AWG Size	Cable Color	Std. Pkg. Qty.	Std. Ctn. Qty.
PHQ4SFPXA1MBL	High speed, 2-pair, twinaxial cable, factory terminated to QSFP+ and four SFP+ modular connectors.	1	30	Black	1	10

*For lengths other than 1 meter (1.5, 2, 2.5, 3, 3.5) change the length designation in the part number to the desired length. For example, the part number for a 2-meter cable assembly is PHQ4SFPXA2MBL.

QuickNet™ Cable Assemblies

- Allow quick network deployment compared to field-terminated installations
- 100% performance tested to electrical permanent link specifications; shipped with permanent link test data for each link
- Terminated in factory controlled environment for consistent network performance
- Pre-bundled with six cables for easy installation
- Plenum or riser cable flame ratings
- Category 6 UTP and Category 6A UTP/Shielded performance levels available
- Available in many common standard lengths and in one foot increments from 10 to 295 feet
- Enable multiple termination types including, pre-terminated cassettes, jack modules, modular plugs, plug pack and/or unterminated options
- Pre-terminated cassettes snap in and out of QuickNet™ Patch Panels
- Quality assurance label includes serialized number for future traceability, performance level, and assembly length

Ready to Order parts in common lengths and configurations

Simple 3 – Step process to obtain ordering information for QuickNet™ Standard Assembly:

1. Choose Performance Level of Cable Assembly
2. Choose Riser or Plenum Cable Type
3. Select desired length of assembly from those listed and replace “nn” with that length

Performance Level and Description	Cable Type	Part Number Template	Available Assembly Lengths (in feet)
Category6A UTP QuickNet™ Cable Assembly made with TX6A™ 10Gig™ UTP Copper Cable with MaTriX Technology and pre-terminated TX6A™ 10Gig™ UTP Jack Module Cassettes on each end.	Riser	QZRBCBCBXX <u>nn</u>	<u>nn</u> = 10, 15, 20, 25, 30, 35, 40, 45, 50, 55, 60, 65, 70, 75 or 80
	Plenum	QZPBCBCBXX <u>nn</u>	
Category6A SDUTP QuickNet™ Cable Assembly made with TX6A-SD™ 10Gig™ UTP Copper Cable with MaTriX Technology and pre-terminated TX6A™ 10Gig™ UTP Jack Module Cassettes on each end.	Riser	QXRBCBCBXX <u>nn</u>	
	Plenum	QXPBCBCBXX <u>nn</u>	
Category6 UTP QuickNet™ Cable Assembly made with Category 6 UTP Cable and pre-terminated TX6™ PLUS UTP Jack Module Cassettes on each end.	Riser	QCRBCBCBXX <u>nn</u>	
	Plenum	QCPBCBCBXX <u>nn</u>	

Termination Options



Pre-Terminated UTP Cassette



Pre-Terminated Shielded Cassette



Jack Modules



Modular Plugs

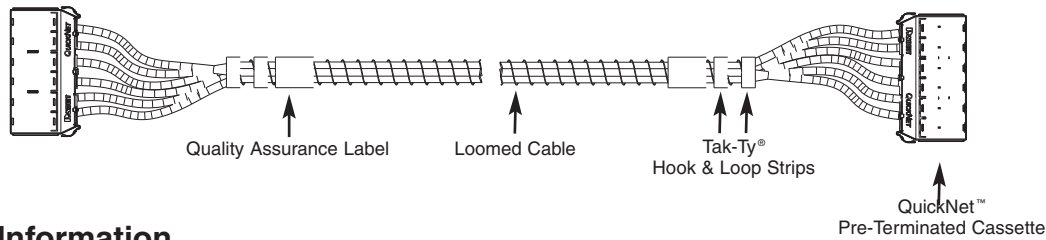


Plug Pack



Un-Terminated

QuickNet™ Configure to Order Cable Assemblies



Ordering Information

Part Number
Example:

Q	Z	P	B	C	B	C	B	X	X	10
1	2	3	4	5	6	7	8	9	10	11

Example – The above part number is a 10 foot QuickNet™ Cable Assembly constructed of Category 6A, UTP, plenum cable (blue) with a pre-terminated cassette (blue jacks installed) on each end.

1 – Q = QuickNet™

2 – Performance Level

- B = Category 6 Enhanced UTP
- C = Category 6 UTP
- E = Category 6A (TX6A™ 10Gig™) Shielded
- X = Category 6A (TX6A-SD™ 10Gig™) UTP MaTriX
- Z = Category 6A (TX6A™ 10Gig™) UTP MaTriX

3 – Flame/Smoke Rating

- R = Riser or P = Plenum

4 – Cable Color

- B = Blue or W = White

5 – Termination End 1

- C = Cassette
- J = Jack modules
- P = Modular plugs
- K = Jack modules staggered right
- L = Jack modules staggered left
- Q = Modular plugs staggered right
- S = Modular plugs staggered left

6 – Termination End 1 Color Options

Jack Module Color Options

- B = Blue, E = Electric Ivory, G = Green, H = Off White, I = International Gray, L = Black, O = Orange, R = Red, V = Violet, W = White, Y = Yellow
- Shielded Jack Modules, chose option L (all Shielded Jack Modules are Black)

Modular Plug and Underterminated Color Options

- X = No color option available, all modular plugs are clear

7 – Termination End 2

- C = Cassette
- J = Jack modules
- P = Modular plugs
- A = Plug pack (6-pack)
- R = Recessed plug pack (6-pack)
- K = Jack modules staggered right
- L = Jack modules staggered left
- Q = Modular plugs staggered right
- S = Modular plugs staggered left
- U = Underterminated
- O = Underterminated with cassette and jack modules for on-site termination

8 – Termination End 2 Color Options

Jack Module Color Options

- B = Blue, E = Electric Ivory, G = Green, H = Off White, I = International Gray, L = Black, O = Orange, R = Red, V = Violet, W = White, Y = Yellow
- Shielded Jack Modules, chose option L (all Shielded Jack Modules are Black)

Plug Pack Color Options

- B = Blue, W = White, R = Red, L = Black

Recessed Plug Pack Color Option

- S = Silver

Modular Plug and Underterminated Color Option

- X = No color option available, all modular plugs are clear

9 – Assembly Options

- P = Pulling eye
- X = No assembly options requested

10 – Custom Labeling*

- L = Custom assembly label
- C = Custom cable labels
- B = Custom assembly and cable labels
- X = No custom labels requested

11 – Assembly Length**

- 10' to 295' (one foot increments)

*Custom cable assembly labels are available up to eighteen characters; individual cable labels are available up to fifteen characters.

**For cable assemblies constructed of Category 6A (TX6A-SD™ 10Gig™) UTP MaTriX Copper Cable, the maximum length is 196 ft. (60m).

All connectivity is wired T568B. Category 6 Enhanced Performance level utilizes Panduit® TX6500™ Category 6 UTP Cable.

Permanent link test results shipped with each cable assembly.

QuickNet™ Plug Pack Cable Assemblies

- Facilitate quick and easy connection and disconnection of multiple patch cords, simultaneously to a variety of switches, reducing time and cost associated when installing and maintaining structured cabling links
- Available in 6, 8, or 12-pack configurations for optimal switch compatibility
- Recessed version available when additional clearance is required at the switchport
- Available in Category 6A and Category 6 Performance levels for UTP installations and Category 6A shielded installations
- Plug meets all applicable FCC part 68 Subpart F requirements and exceeds IEC 60603-7 specifications
- Meet requirements of IEEE 802.3af and IEEE 802.3at for PoE applications
- Each patch cord is 100% performance tested
- Integrated finger latch enables quick, one-handed installation and removal from switch
- Low profile design allows assemblies to be installed side by side or stacked on top of each other providing maximum port density in high density installations
- Marker ties enable easy identification in high density installations and provides additional level of security when used with optional lock in device
- Labels on patch cords provide identification of performance level, length, and quality control number
- Optional removal tool (QPVRT) facilitates removal of individual cable links without disrupting service to other network connections
- Optional lock in device (QPPLD6-X and QPPLD8-X) prevents unintentional removal of assembly from the switch for an additional level of security
- UTP cable available in blue or white; shielded cable available in blue or international gray
- Plug packs available in blue or white; recessed version available in silver



6-Pack Plug Pack



8-Pack Plug Pack



12-Pack Plug Pack



6-Pack Recessed Plug Pack

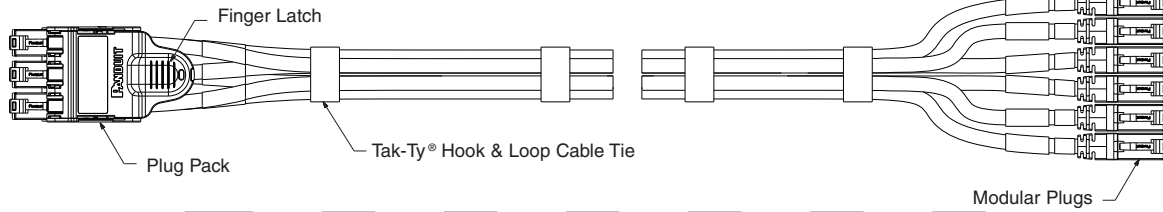
Part Number	Part Description	Cable Color	Termination End 1	Color	Termination End 2	Length		Std. Pkg. Qty.	Std. Ctn. Qty.
						Ft.	m		
Category 6A UTP									
QPAZCBAB07	QuickNet® Plug Pack Cable Assembly made with Category 6A, CM blue UTP cable with a 6-pack blue plug pack on one end and modular plugs on the other end.	Blue	Modular Plugs	Blue Plug Pack	Plug Pack with Modular Plugs	7	2.13	1	10
Category 6A Shielded									
QPPEDBAB07	QuickNet® Plug Pack Cable Assembly made with Category 6A, dual rated (CM/LSZH) blue shielded cable with a 6-pack blue plug pack on one end and modular plugs on the other end.	Blue	Modular Plugs	Blue Plug Pack	Plug Pack with Modular Plugs	7	2.13	1	10
Category 6 UTP									
QPPCCBAB07	QuickNet® Plug Pack Cable Assembly made with Category 6, CM blue cable with a 6-pack blue plug pack on one end and modular plugs on the other end.	Blue	Modular Plugs	Blue Plug Pack	Plug Pack with Modular Plugs	7	2.13	1	10

Removal tool available on page B.13.

Lock in device available on page B.13.

The above part numbers in the table represent 6 pack QuickNet™ Plug Pack assemblies. To build your own standard part number, see the configurator on the facing page.

QuickNet™ Plug Pack Cable Assembly Ordering Information



Part Number
Example:

QPP	A	C	B	A	B	03
1	2	3	4	5	6	7

Example – The above part number is a 3 foot QuickNet™ Plug Pack Cable Assembly constructed of Category 6A, UTP, CM cable (blue) with a 6 plug pack (blue) on one end and modular plugs on the other end.

1 – QuickNet™ Plug Pack Assembly (QPP)

2 – Performance Level

- A = Category 6A (TX6A™10Gig™) UTP MaTriX
- X = Category 6A (TX6A-SD™10Gig™) UTP MaTriX
- E = Category 6A (10Gig™)/Category 6 Shielded*
- C = Category 6 UTP

3 – Flame/Smoke Rating

- C = CM (UTP only)
- D = Dual rated CM and LSZH (shielded only)

4 – Cable Color

- B = Blue
- W = White (UTP only)
- G = International Gray (shielded only)

5 – Plug Pack Configuration

- A = 6-pack
- B = 12-pack
- D = 8-pack
- R = Recessed 6-pack

6 – Plug Pack Color

- B = Blue
- W = White
- S = Silver (Recessed version only)

7 – Assembly Length

- 03 = 3 feet
- 05 = 5 feet
- 07 = 7 feet
- 10 = 10 feet
- 14 = 14 feet

All UTP cable is available in CM Flame/Smoke Rating.
*All shielded cable is dual rated for CM and LSZH applications.

Component Labels for QuickNet™ Plug Pack Assemblies



Suggested Label Solutions for TIA/EIA-606-A Compliance

Part Number	Laser/Ink Jet Desktop Printer Label	TDP43ME Thermal Transfer Desktop Printer Label	PanTher™ LS8E Hand-Held Printer Label	Cougar™ LS9 Hand-Held Printer Label
All QuickNet™ Plug Pack Assemblies	C125X030FJJ	C125X030YPT	C125X030FJC	T050X000VPC-BK

For complete labeling solutions and product information, reference charts on pages O.1 – O.25.



QuickNet™ Patch Panels and Accessories

- Accept QuickNet™ Copper Cable Assemblies and QuickNet™ SFQ Series MTP* Fiber Optic Cassettes which snap in and out with one hand
- High-density patch panels conserve valuable rack space
- Angled patch panels facilitate proper bend radius control and minimize the need for horizontal cable managers
- Pre-printed numbers above each port for easy identification
- Mount to standard EIA 19" racks or 23" racks with optional extender brackets
- Zero RU brackets (FQCBRUA) mount up to two QuickNet™ Cassettes directly to rack or enclosure without utilizing additional rack space
- Optional patch panel adapter (QPPABL) accepts all Mini-Com® Modules for UTP, fiber optic, and audio/visual applications
- Optional patch panel blank (QPPBBL) promotes proper airflow and cooling
- Label/label cover kit (QPPLC24) provides port and panel identification for 24-port patch panels
- QuickNet™ All Metal Modular Patch Panels accept shielded cassettes with no grounding kit required
- If not using QuickNet™ All Metal Modular Patch Panels, optional retrofit grounding kit (QNSMRRT) is required to ground shielded cassettes to QuickNet™ Modular Patch Panels



QAPP24BL



QASP24BL



QAPP48HDBL



QASP48HDBL



QPP24BL



QSP24BL



QPP48HDBL



QSP48HDBL



QPPABL



QPPBBL

Part Number	Part Description	No. of Rack Spaces [^]	Std. Pkg. Qty.	Std. Ctn. Qty.
-------------	------------------	---------------------------------	----------------	----------------

QuickNet™ Angled Patch Panels

QAPP24BL	24-port angled patch panel which accepts QuickNet™ Pre-Terminated Cassettes and Patch Panel Adapters.	1	1	10
QASP24BL	24-port, all metal angled patch panel which accepts QuickNet™ Pre-Terminated Shielded Cassettes and Patch Panel Adapters.	1	1	10
QAPP48HDBL	48-port angled patch panel which accepts QuickNet™ Pre-Terminated Cassettes and Patch Panel Adapters.	1	1	10
QAPP48HDVNSBL	48-port angled patch panel which accepts QuickNet™ Pre-Terminated Cassettes and Patch Panel Adapters. Numbering sequence is top to bottom across patch panel.	1	1	10
QASP48HDBL	48-port, all metal angled patch panel which accepts QuickNet™ Pre-Terminated Shielded Cassettes and Patch Panel Adapters.	1	1	10

QuickNet™ Flat Patch Panels

QPP24BL	24-port patch panel which accepts QuickNet™ Pre-Terminated Cassettes and Patch Panel Adapters.	1	1	10
QSP24BL	24-port, all metal patch panel which accepts QuickNet™ Pre-Terminated Shielded Cassettes and Patch Panel Adapters.	1	1	10
QPP48HDBL	48-port patch panel which accepts QuickNet™ Pre-Terminated Cassettes and Patch Panel Adapters.	1	1	10
QPP48HDVNSBL	48-port patch panel which accepts QuickNet™ Pre-Terminated Cassettes and Patch Panel Adapters. Numbering sequence is top to bottom across patch panel.	1	1	10
QSP48HDBL	48-port, all metal patch panel which accepts QuickNet™ Pre-Terminated Shielded Cassettes and Patch Panel Adapters.	1	1	10

Patch Panel Adapter

QPPABL	QuickNet™ Patch Panel Adapter which accepts Mini-Com® Modules for UTP, fiber optic, and audio/visual applications.	—	1	10
--------	--	---	---	----

Patch Panel Blank

QPPBBL	QuickNet™ Patch Panel Blank reserves space for future use and promotes proper airflow and cooling.	—	1	10
--------	--	---	---	----

Patch Panel Label Kit

QPPLC24	Label/label cover kit for 24-port QuickNet™ Patch Panels. Each kit contains four labels and four clear label covers per bag.	—	1	10
---------	--	---	---	----

*MTP is a registered trademark of US Conec Ltd.

[^]One rack space = 1.75" (44.45mm). M6 and #12-24 mounting screws included. QuickNet™ Pre-Terminated Cable Assemblies available on pages B.8 – B.9. QuickNet™ SFQ Series MTP* Fiber Optic Cassettes available on page C.45.

QuickNet™ Plug Pack Housings

- Facilitate quick and easy connection and disconnection of multiple patch cords, simultaneously to a variety of switches, reducing time and cost associated when installing and maintaining structured cabling links
- Available in 6, 8, or 12-pack configurations for optimal switch compatibility
- Recessed version available when additional clearance is required at the switch port
- Integrated finger latch enables quick, one-handed installation and removal from switch
- Low profile design allows assemblies to be installed side by side or stacked on top of each other providing maximum port density in high density installations
- Marker ties enable easy identification in high density installations and provides additional level of security when used with optional lock in device
- Optional removal tool (QPPRT) facilitates removal of individual cable links without disrupting service to other network connections
- Optional lock in device (QPPLD6-X or QPPLD8-X) prevents unintentional removal of assembly from the switch for an additional level of security



QPPN6BU



QPPNR6S

Part Number	Part Description	Std. Pkg. Qty.	Std. Ctn. Qty.
QPPN6BU*	QuickNet™ Plug Pack accepts six Panduit RJ45 modular plugs.	1	10
QPPN8BU*	QuickNet™ Plug Pack accepts eight Panduit RJ45 modular plugs.	1	10
QPPN12BU*	QuickNet™ Plug Pack accepts twelve Panduit RJ45 modular plugs.	1	10
QPPNR6S	QuickNet™ Recessed Plug Pack accepts six Panduit RJ45 modular plugs.	1	10

*For standard colors other than BU (Blue), replace BU in part number with BL (Black), RD (Red), or WH(White). Recessed Plug Pack available in silver only.

QuickNet™ Plug Pack Removal Tool

- Allows individual patch cords to be removed from a plug pack without disruption of other network connections
- Compatible with 6, 8, and 12-pack QuickNet™ Plug Pack Assemblies



Part Number	Part Description	Std. Pkg. Qty.
QPPRT	Removal tool allows individual patch cords to be removed from a plug pack without disruption of other network connections.	1

QuickNet™ Plug Pack Assemblies available on pages B.10 and B.11.

QuickNet™ Plug Pack Lock-in Device

- Prevents unintentional removal of QuickNet™ Plug Pack Assembly from the switch
- Marker tie (included with assembly) can be used to connect plug pack and lock-in device for additional level of security
- Two recommended per plug pack



QPPLD6-X

Part Number	Part Description	Std. Pkg. Qty.	Std. Ctn. Qty.
QPPLD6-X	Lock-in device prevents unauthorized removal of patch cords from 6 and 12-pack plug pack.	10	100
QPPLD8-X	Lock-in device prevents unauthorized removal of patch cords from 8-pack plug pack. Recommended quantity two per 8-pack.	10	100

Recommended quantity two QPPLD6 per 6-pack plug pack, four QPPLD6 per 12-pack plug pack, and two QPPLD8 per 8-pack plug pack.

QuickNet™ Plug Pack Assemblies available on pages B.10 and B.11.

TX6A™ 10Gig™ U/FTP Shielded Copper Cable

- Exceeds requirements of ANSI/TIA-568-C.2 Category 6A, IEEE 802.3an-2006, and ISO 11801 Class E_A channel standards
- Exceeds requirements of ANSI/TIA-568-C.2 Category 6A and IEC 61156-5 Category 6A component standards
- Meets requirements of IEEE 802.3af and IEEE 802.3at for PoE applications
- Cable diameter: Riser 0.308 in. (7.8mm) nominal, Plenum 0.295 in. (7.5mm) nominal

- Installation temperature range: 32°F to 140°F (0°C to 60°C)
- Operating temperature range: 14°F to 140°F (-10°C to 60°C)
- Descending length cable markings enable easy identification of remaining cable which reduces installation time and cable scrap



Part Number	Part Description	Color‡	Std. Pkg. Qty. (Ft.)	Std. Ctn. Qty. (Ft.)
Riser				
PUFR6X04BU-UG	Category 6A, riser (CMR), 4-pair, U/FTP shielded copper cable. Copper conductors are 23 AWG with HDPE insulation. Conductors are twisted in pairs, each individual twisted pair includes a metallic foil shield and is protected by a flame-retardant PVC jacket.	Blue	1000	15000
Plenum				
PUFP6X04BU-UG	Category 6A, plenum (CMP), 4-pair, U/FTP shielded copper cable. Copper conductors are 23 AWG with FEP insulation. Conductors are twisted in pairs, each individual twisted pair includes a metallic foil shield and is protected by a low smoke, flame-retardant PVC jacket.	Blue	1000	15000

‡For standard colors other than Blue, replace BU (Blue) with WH (White), YL (Yellow), or IG (International Gray).
Order number of pieces required, in multiples of 5,000 feet.
Must be installed as part of a complete TX6A™ 10Gig™ Copper Cabling System in order to achieve 10GBASE-T certified performance.

In data center and telecommunication room applications, Panduit recommends that both-ends of shielded cable link be bonded if the channel is contained in the same building and any multiple serving AC power systems are inter-system bonded. For workstation applications, it is recommended that the cable link be bonded through the normal process in the telecommunication room and through the patch cord at the workstation, which provides the proper path to ground via the computer's AC power plug.

TX6A™ 10Gig™ Shielded F/UTP Copper Cable

- Exceeds requirements of ANSI/TIA-568-C.2 Category 6A, IEEE 802.3an-2006, and ISO 11801 Class E_A channel standards
- Exceeds requirements of ANSI/TIA-568-C.2 Category 6A and IEC 61156-5 Category 6A component standards
- Meets requirements of IEEE 802.3af and IEEE 802.3at for PoE applications

- Cable diameter 0.284 in. (7.2mm) nominal
- Installation temperature range: -20°F to 75°F (-4°C to 167°C) during installation and operation
- Descending length cable markings enable easy identification of remaining cable which reduces installation time and cable scrap



Part Number	Part Description	Color	Std. Pkg. Qty.	Std. Ctn. Qty.
PFR6X04BU-CG	Category 6A riser (CMR) 4-pair F/UTP shielded copper cable. Conductors are 23 AWG with PE insulation. Conductors are twisted in pairs, separated by an integrated pair separator, all four pairs surrounded by an overall metallic foil shield and protected by a low smoke zero halogen jacket.	Blue	1000	27000

‡For standard colors other than Blue, replace BU (Blue) with WH (White).
Order number of pieces required, in multiples of 9,000 feet.
Must be installed as part of a complete TX6A™ 10Gig™ Copper Cabling System in order to achieve 10GBASE-T certified performance.

In data center and telecommunication room applications, Panduit recommends that both-ends of shielded cable link be bonded if the channel is contained in the same building and any multiple serving AC power systems are inter-system bonded. For workstation applications, it is recommended that the cable link be bonded through the normal process in the telecommunication room and through the patch cord at the workstation, which provides the proper path to ground via the computer's AC power plug.

TX7000™ Shielded S/FTP Marine Copper Cable

- Exceeds requirements of ISO 11801 Class E_A and ANSI/TIA-568-C.2 Category 6A channel standards
- Meets or exceeds the requirements of IEC 61156-5 Category 7 component standards at swept frequencies up to 600 MHz
- Meets requirements of IEEE 802.3af and IEEE 802.3at for PoE applications
- Robust cable jacket oil and fuel resistant for harsh environments
- Flame rated to meet IEC 60754-1, IEC 60754-2, IEC 61034-2, IEC 60332-3-24
- Chemical resistance tested to mineral oil IRM 902 (IEC 60811-2-1) and diesel fuel IRM 903 (IEC 60811-2-1)
- Third party tested to exceed the application requirements of Det Norske Veritas, American Bureau of Shipping, and ETL

- DNV certification number E-10447
- ABS certification number 10-HS638424-1-PDA
- Ideal for harsh environments encountered in marine applications, including ship and offshore/onshore units
- Cable diameter 8.2 mm (0.322 in) nominal
- Installation temperature range: -15°C to 50°C (5°F to 122°F)
- Operating temperature range: -40°C to 85°C (-40°F to 185°F)
- Descending cable length markings enable easy identification of remaining cable which reduces installation time and cable scrap
- Packaged on a reel



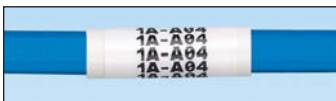
PSM7004BU

Part Number	Part Description	Color	Std. Pkg. Qty. (Ft.)	Std. Ctn. Qty. (Ft.)
PSM7004BU-KD	Category 7 low smoke, halogen free, fire retardant (LSHF-FR), 4-pair S/FTP shielded marine copper cable. Stranded copper conductors are 4 x 2/0.27mm ² . Conductors are twisted in pairs, each individual twisted pair is surrounded by a foil, covered with an overall braided shield and is protected by an oil and fuel resistant, low smoke, halogen free, and fire retardant jacket.	Blue	1640	19680
PSM7004BU-KM	Category 7 low smoke, halogen free, fire retardant (LSHF-FR), 4-pair S/FTP shielded marine copper cable. Stranded copper conductors are 4 x 2/0.27mm ² . Conductors are twisted in pairs, each individual twisted pair is surrounded by a foil, covered with an overall braided shield and is protected by an oil and fuel resistant, low smoke, halogen free, and fire retardant jacket.	Blue	3280	13120

Order number of pieces required, in multiples of 13,120 feet.

Must be installed as part of a complete TX6A™ 10Gig™ Copper Cabling System in order to achieve 10GBASE-T certified performance.

Labels for Cable



Suggested Label Solutions for TIA/EIA-606-A Compliance

Cable Part Number	Laser/Ink Jet Desktop Printer Label	TDP43ME Thermal Transfer Desktop Printer Label	PanTher™ LS8E Hand-Held Printer Label	Cougar™ LS9 Hand-Held Printer Label
All cable on pages B.10, B.11 and B.19	S100X225YAJ	S100X225VATY	S100X225VAC	T100X000CBC-BK

For complete labeling solutions and product information, reference charts on pages O.1 – O.25.

UL US **Mini-Com**® **TX6A**™ **10Gig**™ **Shielded Jack Modules**

- Exceed requirements of ANSI/TIA-568-C.2 Category 6A, IEEE 802.3an-2006, and ISO 11801 Class E_A channel standards
- Exceed requirements of ANSI/TIA-568-C.2 Category 6A and IEC 61156-5 Category 6_A component standards
- Meet requirements of IEEE 802.3af and IEEE 802.3at for PoE applications
- Color-coded, keyed jack modules mechanically and visually distinguish connections to prevent unintentional mating with unlike keyed or non-keyed modular plugs accommodating more discrete networks
- Each jack is 100% tested to ensure NEXT and RL performance and is individually serialized for traceability
- Utilize patent-pending enhanced Giga-TX™ Technology for jack terminations which optimizes performance by maintaining cable pair geometry and eliminating conductor untwist
- Fully grounded and bonded to patch panel when installed in Panduit All Metal Modular Patch Panel
- Contacts plated with 50 microinches of gold for superior performance
- No punchdown tool required; termination tool (EGJT) ensures conductors are fully terminated by utilizing a smooth forward motion without impact on critical internal components for maximum reliability
- Optional termination tool (TGJT) reduces termination time by 25%, ideal for high volume installations
- Can be re-terminated a minimum of twenty times
- Blue termination cap designates 10Gig™ Category 6A performance and provides positive strain relief; helps control cable bend radius and securely retains wires
- Terminate 4-pair, 22 – 26 AWG, 100 ohm, solid or stranded shielded twisted pair cable
- Universal termination cap is color-coded for T568A and T568B wiring schemes
- Integrated strain relief with wire cap provides 360° conductive path for grounding
- 0.187 in. grounding tab provides conductive patch for grounding individual jacks
- Accept 6 and 8-position modular plugs without damage
- Can be clearly identified with optional labels and icons
- Compatible with Mini-Com® Modular Patch Panels, Faceplates, and Surface Mount Boxes
- Optional RJ45 blockout device blocks out unauthorized access to jack modules and potentially harmful foreign objects, saving time and money associated with data security breaches, network downtime, repair, and hardware replacement
- Optional dust cap keeps out dust and debris while not in use



CJS6X88TGY



CJSK6X88TGBL

Part Number	Part Description	No. of Module Spaces	Color	Std. Pkg. Qty.	Std. Ctn. Qty.
Jack Module					
CJS6X88TGY	Category 6A, RJ45, 10 Gb/s, 8-position, 8-wire universal shielded black module with integral shield.	1	Black	1	50
Keyed Jack Module					
CJSK6X88TGBL*	Keyed, Category 6A, RJ45, 10 Gb/s, 8-position, 8-wire universal shielded module with integral shield.	1	Black	1	50

*For standard colors other than Black, replace suffix BL (Black) with BU (Blue), RD (Red), YL (Yellow), GR (Green), OR (Orange), VL (Violet), or GY (Gray). Each color representing a different keyed configuration. Termination tools available on page B.97.

Shield grounding requires proper installation of shielded jack module and the use of shielded patch cords and cable.

For grounding shielded modules not installed in a shielded patch panel, see the shielded jack module grounding kit, CJSJK-XY on page M.23.

All Metal Modular Patch Panels available on page B.73.

RJ45 blockout device available on page B.92.

Dust cap available on page B.97.

Contact customer service for bulk packaged jack modules.

Must be installed as part of a complete TX6A™ 10Gig™ Copper Cabling System in order to achieve 10GBASE-T certified performance.

cUL^{us} Mini-Com® TX6A™ 10Gig™ Shielded Jack Modules (continued)

Keyed Geometry



Black Key



Red Key



Green Key



Yellow Key



Orange Key



Blue Key



Violet Key



Intl. Gray Key



Black Key



Red Key



Green Key



Yellow Key



Orange Key



Blue Key



Violet Key



Intl. Gray Key

Component Labels for Mini-Com® TX6A™ 10Gig™ Shielded Jack Modules



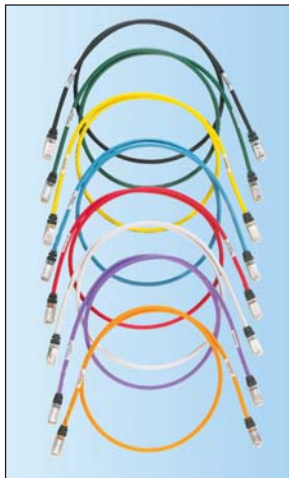
Suggested Label Solutions for TIA/EIA-606-A Compliance

Module Part Number	Laser/Ink Jet Desktop Printer Label	TDP43ME Thermal Transfer Desktop Printer Label	PanTher™ LS8E Hand-Held Printer Label	Cougar™ LS9 Hand-Held Printer Label
CJS6X88TGY CJSK6X88TGBL	C138X019FJJ	C138X019YPT	C138X019FJC	T019X000FJC-BK

For complete labeling solutions and product information, reference charts on pages O.1 – O.25.

UL US TX6A™ 10Gig™ Shielded Patch Cords

- Exceed requirements of ANSI/TIA-568-C.2 Category 6A, IEEE 802.3an-2006, and ISO 11801 Class E_A channel standards
- Exceed requirements of ANSI/TIA-568-C.2 Category 6A and ISO 11801 Class E_A component standards
- Meet requirements of IEEE 802.3af and IEEE 802.3at for PoE applications
- Color-coded, keyed modular plugs mechanically and visually distinguish connections to prevent unintentional mating with unlike keyed or non-keyed jack modules accommodating more discrete networks
- Each patch cord is 100% performance tested to component limits and wired T568B
- Constructed of 26 AWG stranded shielded copper cable (nominal cable diameter is 0.23 in.) and TX6™ PLUS Shielded Modular Plugs for superior performance
- Cable includes overall metal shield that provides conductive path for grounding
- Plug meets all applicable ANSI/TIA-968-A requirements and exceeds IEC 60603-7 specifications
- Plug uses an integral pair manager to optimize performance and consistency by reducing untwisting of conductors within the plug
- Plug performance in center of TIA/EIA component range, ensuring interoperability and 10GBASE-T Ethernet channel performance
- Labels on patch cords provide identification of performance level, length, and quality control number
- Patented tangle-free latch prevents snags and provides easy release, saving time on frequent moves, adds, and changes
- Optional patch cord color bands snap on and off individual patch cables offering endless color-coding options
- Optional RJ45 plug lock-in device blocks unauthorized removal of cable, IP phone, other networking equipment, or critical connection



Part Number	Part Description	Length (Ft.)	Cable Color	Std. Pkg. Qty.	Std. Ctn. Qty.
Patch Cord					
STP6X3IG‡	Category 6A, 10 Gb/s S/FTP patch cord with TX6™ PLUS Modular Plugs on each end.	3	Off White	1	10
Keyed Patch Cord					
STPK6X3BL*	Keyed, Category 6A, shielded patch cord with TX6™ PLUS Keyed Modular Plug on one end and TX6™ Non-Keyed Modular Plug on the other end.	3	Black	1	10

‡For lengths 2 to 20 feet (increments of one foot) and 25, 30, 35, 40 feet change the length designation in the part number to the desired length. For standard cable colors other than IG (International Gray) replace IG suffix with BL (Black), BU (Blue), GR (Green), RD (Red), YL (Yellow), OR (Orange), or VL (Violet) to end of part number. For example, the part number for a blue 15-foot patch cord is STP6X15BU.
 *For lengths other than 3 feet (5, 7, 10, 14 feet) change the length designation in the part number to the desired length. For standard cable colors other than Black, replace suffix BL (Black) with BU (Blue), RD (red), YL (Yellow), GR (Green) or OR (Orange), each color representing a different keyed configuration.
 Contact customer service for universal reference patch cords.
 Patch cord color bands available on page B.96.
 RJ45 plug lock-in device available on page B.94.
 Must be installed as part of a complete TX6A™ 10Gig™ Copper Cabling System in order to achieve 10GBASE-T certified performance.

Labels for TX6A™ 10Gig™ Shielded Patch Cords



Suggested Label Solutions for TIA/EIA-606-A Compliance				
Patch Cord Part Number	Laser/Ink Jet Desktop Printer Label	TDP43ME Thermal Transfer Desktop Printer Label	PanTher™ LS8E Hand-Held Printer Label	Cougar™ LS9 Hand-Held Printer Label
All Patch Cords	S100X150YAJ	S100X150VATY	S100X150VAC	T100X000CBC-BK

For complete labeling solutions and product information, reference charts on pages O.1 – O.25.





TX6A™ 10Gig™ and TX6A-SD™ 10Gig™ UTP Copper Cable with MaTriX Technology

- Exceeds requirements of ANSI/TIA-568-C.2 Category 6A, IEEE 802.3an-2006, and ISO 11801 Class E_A channel
- Exceeds requirements of ANSI/TIA-568-C.2 Category 6A and IEC 61156-5 Category 6_A component standards
- Superior headroom warranty provides the highest margins above the industry standard for both electrical and alien crosstalk performance
- Meets requirements of IEEE 802.3af and IEEE 802.3at for PoE applications
- Patented cable with MaTriX Technology suppresses alien crosstalk with enhanced internal electrical performance
- Round cable design with reduced cable diameter enables improved cable bundling and optimizes fill capacity
- TX6A™ 10Gig™ UTP Copper Cable available for distances up to 100 meters; cable diameter 0.295 in. (7.5mm) nominal
- TX6A-SD™ 10Gig™ UTP Copper Cable available for distances up to 70 meters, offering smaller cable diameter comparable to Category 6 cable; cable diameter 0.240 in. (6.1mm) nominal
- Installation temperature range: 32°F to 140°F (0°C to 60°C)
- Operating temperature range: -4°F to 167°F (-20°C to 75°C)
- Descending length cable markings enable easy identification of remaining cable which reduces installation time and cable scrap



PUP6A04BU-UG



PUP6ASD04BU-UG

Part Number	Part Description	Color	Std. Pkg. Qty. (Ft.)	Std. Ctn. Qty. (Ft.)
TX6A™ 10Gig™ UTP Copper Cable (100 meter solution)				
PUP6A04BU-UG [‡]	Category 6A, plenum (CMP), 4-pair, UTP copper cable. Copper conductors are 23 AWG with FEP insulation. Conductors are twisted in pairs, separated by an integrated pair divider, surrounded by a patent-pending MaTriX tape and protected by a low-smoke flame-retardant PVC jacket.	Blue	1000	18000
PUR6A04BU-UG ^{†1}	Category 6A, riser (CMR), 4-pair, UTP copper cable. Copper conductors are 23 AWG with flame-retardant PE insulation. Conductors are twisted in pairs, separated by an integrated pair divider, surrounded by a patent-pending MaTriX tape and protected by a flame-retardant PVC jacket.	Blue	1000	18000
TX6A-SD™ 10Gig™ UTP Copper Cable (70 meter solution)				
PUP6ASD04BU-UG [‡]	Category 6A, riser (CMR), 4-pair, UTP copper cable. Copper conductors are 26 AWG with flame-retardant PVC insulation. Conductors are twisted in pairs, separated by an integrated pair divider, surrounded by a patent-pending MaTriX tape and protected by a flame-retardant PVC jacket. Ideal for installations up to 70 meters. Smallest diameter Category 6A UTP cable on the market at 0.240 in. (6.1mm).	Blue	1000	18000
PUR6ASD04BU-CG [‡]	Category 6A, riser (CMR), 4-pair, UTP copper cable. Copper conductors are 26 AWG with flame-retardant PVC insulation. Conductors are twisted in pairs, separated by an integrated pair divider, surrounded by a patent-pending MaTriX tape and protected by a flame-retardant PVC jacket. Ideal for installations up to 70 meters.	Blue	1000	18000

[‡]For standard colors other than Blue, replace BU (Blue) with WH (White), YL (Yellow), or IG (International Gray).

[†] Substitute PUR6A04BU-CG[‡] for alternative manufacturing location.

Order number of pieces required, in multiples of 9,000 feet.

Must be installed as part of a complete TX6A™ 10Gig™ Copper Cabling System in order to achieve 10GBASE-T certified performance.

Reference page B.15 for appropriate labeling solution.



UL[®] US[®] Mini-Com[®] TX6A™ 10Gig™ UTP Jack Module

- Exceed requirements of ANSI/TIA-568-C.2 Category 6A, IEEE 802.3an-2006, and ISO 11801 Class E_A channel standards
- Exceed ANSI/TIA-568-C.2 Category 6A and IEC 61156-5 Category 6A component standards
- Meet requirements of IEEE 802.3af and IEEE 802.3at for PoE applications
- MaTriX split foil technology provides superior suppression of alien crosstalk (PSANEXT and PSAACRF)
- Superior headroom warranty provides the highest margins above the industry standard for both electrical and alien crosstalk performance
- Color-coded, keyed jack modules mechanically and visually distinguish connections to prevent unintentional mating with unlike keyed or non-keyed modular plugs accommodating more discrete networks
- Each jack is 100% tested to ensure NEXT and RL performance and is individually serialized for traceability
- Utilize patent-pending enhanced Giga-TX™ Technology for jack terminations which optimizes performance by maintaining cable pair geometry and eliminating conductor untwist
- Contacts plated with 50 microinches of gold for superior performance
- No punchdown tool required; termination tool (EGJT) ensures conductors are fully terminated by utilizing a smooth forward motion without impact on critical internal components for maximum reliability
- Optional termination tool (TGJT) reduces termination time by 25%, ideal for high volume installations
- Can be re-terminated a minimum of twenty times
- Blue termination cap designates Category 6A performance and provides positive strain relief; helps control cable bend radius and securely retains wires
- Terminate 4-pair, 22 – 26 AWG, 100 ohm, solid or stranded twisted pair cable
- Universal termination cap is color-coded for T568A and T568B wiring schemes
- Accept 6 and 8-position modular plugs without damage
- Can be clearly identified with optional labels and icons
- Compatible with Mini-Com[®] Modular Patch Panels, Faceplates, and Surface Mount Boxes
- Optional RJ45 blockout device blocks out unauthorized access to jack modules and potentially harmful foreign objects, saving time and money associated with data security breaches, network downtime, repair, and hardware replacement
- Optional dust cap keeps out dust and debris while not in use



CJ6X88TGIW



CJK6X88TGBL

Part Number	Part Description	No. of Module Spaces	Color‡	Std. Pkg. Qty.	Std. Ctn. Qty.
Jack Module					
CJ6X88TGIW‡	Category 6A, RJ45, 10 Gb/s, 8-position, 8-wire universal module. Includes patent pending MaTriX split foil tape.	1	Off White	1	50
Keyed Jack Module					
CJK6X88TGBL*	Keyed, Category 6A, RJ45, 10 Gb/s, 8-position, 8-wire universal module. Includes patent pending MaTriX split foil tape.	1	Black	1	50

‡For standard colors other than Off White, replace suffix IW (Off White) with EI (Electric Ivory), WH (White), AW (Arctic White), IG (International Gray), BL (Black), OR (Orange), RD (Red), BU (Blue), GR (Green), YL (Yellow) or VL (Violet).

*For standard colors other than Black, replace suffix BL (Black) with BU (Blue), RD (Red), YL (Yellow), GR (Green), or OR (Orange), each color representing a different keyed configuration.

Termination tools available on page B.97.

RJ45 blockout device available on page B.92.

Dust cap available on page B.97.

Contact customer service for bulk packaged jack modules.

Must be installed as part of a complete TX6A™ 10Gig™ UTP Copper Cabling System in order to achieve 10GBASE-T certified performance.

cUL us Mini-Com® TX6A™ 10Gig™ UTP Jack Modules (continued)

Keyed Geometry



Black
Key



Red
Key



Green
Key



Yellow
Key



Orange
Key



Blue
Key



Black
Key



Red
Key



Green
Key



Yellow
Key



Orange
Key



Blue
Key

Component Labels for Mini-Com® TX6A™ 10Gig™ UTP Jack Modules



Suggested Label Solutions for TIA/EIA-606-A Compliance

Module Part Number	Laser/Ink Jet Desktop Printer Label	TDP43ME Thermal Transfer Desktop Printer Label	PanTher™ LS8E Hand-Held Printer Label	Cougar™ LS9 Hand-Held Printer Label
All TX6A™ 10Gig™ Jack Modules	C138X019FJJ	C138X019YPT	C138X019FJC	T019X000FJC-BK

For complete labeling solutions and product information, reference charts on pages O.1 – O.25.

DP6A™ 10Gig™ UTP Patch Panels

- Exceed requirements of ANSI/TIA-568-C.2 Category 6A, IEEE 802.3an-2006, and ISO 11801 Class E_A channel standards
- Exceed requirements of ANSI/TIA-568-C.2 Category 6A and IEC 61156-5 Category 6_A component standards
- Meet requirements of IEEE 802.3af and IEEE 802.3at for PoE applications
- Each port is 100% tested to ensure NEXT and RL performance and is individually serialized to support traceability
- Utilize 110 punchdown termination on back panel and include retention cap for each port
- Each port contains a universal label that is color-coded for T568A and T568B wiring schemes
- Contacts plated with 50 microinches of gold for superior performance
- Angled versions allow for higher density applications by easily routing the patch cords to each side of the panel eliminating the need for horizontal cable management
- Terminate 4-pair, 22 – 26 AWG, 100 ohm, solid or stranded twisted pair cable
- Mount to standard EIA 19" rack or 23" racks with optional extender bracket
- Write-on areas for port and panel identification
- Can be clearly identified with labels and icons
- Optional label kits (DPLK24 and DPLK48) contain adhesive label holder and labels for easy port and panel identification



DP246X88TGY

PATENTED



DP486X88TGY



DP246X88TGY



DP486X88TGY

Part Number	Part Description	No. of Rack Spaces [^]	Std. Pkg. Qty.	Std. Ctn. Qty.
DP6A™ 10Gig™ Angled Patch Panels				
DP246X88TGY	24-port, angled, Category 6A, 10 Gb/s patch panel with 24 RJ45 8-position, 8-wire ports.	1	1	10
DP486X88TGY	48-port, angled, Category 6A, 10 Gb/s patch panel with 48 RJ45 8-position, 8-wire ports.	2	1	10
DP6A™ 10Gig™ Flat Patch Panels				
DP246X88TGY	24-port, Category 6A, 10 Gb/s patch panel with 24 RJ45 8-position, 8-wire ports.	1	1	10
DP486X88TGY	48-port, Category 6A, 10 Gb/s patch panel with 48 RJ45 8-position, 8-wire ports.	2	1	10

[^]One rack space = 1.75" (44.45mm).
 M6 and #12-24 mounting screws included.
 Replaceable punchdown modules available, part number DRJ6X88TGBL.
 Termination tool (PDT110) available on page B.91.
 Must be installed as part of a complete TX6A™ 10Gig™ Copper Cabling System in order to achieve 10GBASE-T certified performance.

Component Labels for DP6A™ 10Gig® UTP Patch Panels



Suggested Label Solutions for TIA/EIA-606-A Compliance				
Patch Panel Part Number	Laser/Ink Jet Desktop Printer Label	TDP43ME Thermal Transfer Desktop Printer Label	PanTher™ LS8E Hand-Held Printer Label	Cougar™ LS9 Hand-Held Printer Label
All Patch Panels on this Page	C379X030FJJ	C379X030YPT	C379X030FJC	T031X000FJC-BK

For complete labeling solutions and product information, reference charts on pages O.1 – O.25.





Mini-Com® Category 6A UTP Coupler Module

- Designed to exceed performance requirements of the ANSI/TIA-568-C.2 Category 6A and ISO 11801 2nd Edition Class E_A channel standards
- Meet requirements of IEEE 802.3af and IEEE 802.3at for PoE applications
- RJ45 8-position, 8-wire female to RJ45 8-position, 8-wire female pass-through module provides fast and easy plug and play connection of 6 and 8-position RJ45 patch cords
- No tools required
- 100% tested to ensure NEXT and RL performance and is individually serialized for traceability
- Contacts plated with 50 microinches of gold for superior performance
- Can be clearly identified with optional labels and icons
- Compatible with Mini-Com® Modular Patch Panels and Faceplates; not suitable for surface mount box applications
- Optional RJ45 blockout device blocks out unauthorized access to jack modules and potentially harmful foreign objects, saving time and money associated with data security breaches, network downtime, repair, and hardware replacement
- Optional dust cap keeps out dust and debris while not in use



Part Number	Part Description	No. of Module Spaces	Color	Std. Pkg. Qty.	Std. Ctn. Qty.
CC6X88IW	Category 6A, RJ45, 8-position, 8-wire universal coupler module.	1	Off White	1	50

‡For other colors replace suffix IW (Off White) with BL (Black).
 Acts as one connecting hardware component in channel.
 RJ45 blockout device available on page B.92.
 Dust cap available on page B.97.
 TX6A™ 10Gig™ UTP Patch Cords available on page B.25.

Component Labels for Mini-Com® Category 6A UTP Coupler Module



Suggested Label Solutions for TIA/EIA-606-A Compliance				
Module Part Number	Laser/Ink Jet Desktop Printer Label	TDP43ME Thermal Transfer Desktop Printer Label	PanTher™ LS8E Hand-Held Printer Label	Cougar™ LS9 Hand-Held Printer Label
CC6X88IW	C138X019FJJ	C138X019YPT	C138X019FJC	T019X000FJC-BK

For complete labeling solutions and product information, reference charts on pages O.1 – O.25.





Category 6A Coupler Patch Panel

- Coupler panel ports provide fast and easy plug and play connection of 6 and 8-position RJ45 patch cords
- No tools required
- Designed to exceed performance requirements of the ANSI/TIA-568-C.2 Category 6A and ISO 11801 2nd Edition Class E_A channel standards
- Contacts plated with 50 microinches of gold for superior performance
- Can be clearly identified with optional labels and icons
- Mounts to standard EIA 19" rack or 23" racks with optional extender bracket



Part Number	Part Description	No. of Rack Spaces [^]	Std. Pkg. Qty.	Std. Ctn. Qty.
CP246X88BL	24-port, Category 6A, patch panel with 24 pre-installed RJ45 Category 6A channel compliant couplers.	1	1	10

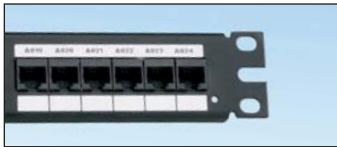
[^]One rack space = 1.75" (44.45mm).

M6 and #12-24 mounting screws included.

Each coupler module acts as one connecting hardware component in a channel.

TX6A™ 10Gig™ UTP Patch Cords available on page B.25.

Component Labels for Category 6A Patch Panel



Suggested Label Solutions for TIA/EIA-606-A Compliance				
Module Part Number	Laser/Ink Jet Desktop Printer Label	TDP43ME Thermal Transfer Desktop Printer Label	PanTher™ LS8E Hand-Held Printer Label	Cougar™ LS9 Hand-Held Printer Label
CP246X88BL	C252X030FJJ	C252X030YPT	C252X030FJC	T031X000FJC-BK



cUL us TX6A™ 10Gig™ UTP Patch Cords with MaTriX Technology

- Exceed requirements of ANSI/TIA-568-C.2 Category 6A, IEEE 802.3an-2006, and ISO 11801 Class E_A channel standards
- Meet requirements of IEEE 802.3af and IEEE 802.3at for PoE applications
- MaTriX Technology provides superior suppression of alien crosstalk (PSANEXT and PSAACRF)
- Superior headroom warranty provides the highest margins above the industry standard for both electrical and alien crosstalk performance
- Color-coded, keyed modular plugs mechanically and visually distinguish connections to prevent unintentional mating with unlike keyed or non-keyed jack modules accommodating more discrete networks
- Each patch cord is 100% performance tested to component limits and wired to T568B
- TX6A-SD™ 10Gig™ constructed of 26 AWG stranded copper cable (nominal cable diameter 0.240 in.) and TX6A™ 10Gig™ Modular Plugs for superior performance
- TX6A™ 10Gig™ constructed of 24 AWG stranded copper cable (nominal cable diameter 0.275 in.) and TX6A™ 10Gig™ Modular Plugs for superior performance
- Compatible as a component of any Panduit TX6A™ 10Gig™ UTP Copper Cabling System for increased design flexibility in channels up to 100 meters
- Plug meets all applicable ANSI/TIA-968-A requirements and exceeds IEC 60603-7 specifications
- Slender strain relief boot provides easy access in high density applications
- Plug uses an integral pair manager to optimize performance and consistency by reducing untwisting of conductors within the plug
- Plug performance in center of TIA/EIA component range, ensuring interoperability and 10GBASE-T Ethernet channel performance
- Labels on patch cords provide identification of performance level, length, and quality control number
- Patented tangle-free latch prevents snags and provides easy release, saving time on frequent moves, adds, and changes
- Optional patch cord color bands snap on and off individual patch cables offering endless color-coding options
- Optional RJ45 lock-in device blocks unauthorized removal of cable, IP phone, other networking equipment, or critical connection



Part Number	Part Description	Length (Ft.)	Cable Color	Std. Pkg. Qty.	Std. Ctn. Qty.
TX6A-SD™ 10Gig™ UTP Patch Cord					
UTP6ASD3‡	Category 6A (SD), 26 AWG, 10 Gb/s UTP patch cord with TX6A™ 10Gig™ Modular Plugs on each end. Includes patent pending MaTriX Tape Technology.	3	Blue	1	10
TX6A™ 10Gig™ UTP Patch Cord					
UTP6A3^	Category 6A, 24 AWG, 10 Gb/s UTP patch cord with TX6A™ 10Gig™ Modular Plugs on each end. Includes patent pending MaTriX Tape Technology.	3	Blue	1	50
Keyed TX6A™ 10Gig™ UTP Patch Cord					
UTPK6A3BL*	Keyed, Category 6A, 24 AWG, 10 Gb/s UTP patch cord with TX6A™ 10Gig™ Keyed Modular Plug on one end and TX6A™ 10Gig™ Non-Keyed Modular Plug on the other end. Includes patent pending MaTriX Tape Technology.	3	Black	1	10

‡For lengths 3 to 20 feet (increments of one foot) and 25, 30, 35, 40 feet, change the length designation in the part number to the desired length. For standard cable colors other than Off White, add suffix BL (Black), BU (Blue), RD (Red), YL (Yellow), GR (Green), YL (Yellow), OR (Orange) or VL (Violet) to the part number. For example, the part number for a blue, 15-foot patch cord is UTP6ASD15BU.

^ For lengths 3 to 20 feet (increments of one foot) and 25, 30, 35, 40 feet, change the length designation in the part number to the desired length. For standard cable colors other than Off White, add suffix BL (Black), BU (Blue), RD (Red), YL (Yellow), GR (Green), YL (Yellow), OR (Orange), VL (Violet), or GY (Gray) to the part number. For example, the part number for a blue, 15-foot patch cord is UTP6A15BU.

*For lengths other than 3 feet (5, 7, 10, 14 feet), change the length designation in the part number to the desired length. For standard cable colors other than BL (Black), replace suffix BL (Black) with BU (Blue), RD (Red), YL (Yellow), GR (Green), or OR (Orange), each color representing a different keyed configuration. Contact customer service for universal reference patch cords

Patch cord color bands available on page B.96.

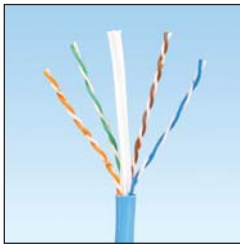
RJ45 plug lock-in device available on page B.94.

Must be installed as part of a complete TX6A™ 10Gig™ Copper Cabling System in order to achieve 10GBASE-T certified performance.

Reference page B.34 for appropriate labeling solution.

UL LISTED US TX6500™ Enhanced Category 6 UTP Copper Cable

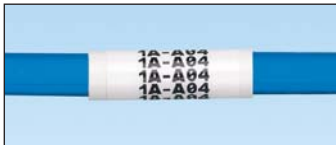
- Exceeds requirements of ANSI/TIA-568-C.2 Category 6 and ISO 11801 2nd Edition Class E channel standards
- Exceeds requirements of ANSI/TIA-568-C.2 and IEC 61156-5 Category 6 component standards
- Meets requirements of IEEE 802.3af and IEEE 802.3at for PoE applications
- Reduced attenuation maximizes the amount of signal that reaches the receiver, increasing bandwidth
- Third party tested to comply with ANSI/TIA-568-C.2
- Cable diameter: Riser 0.265 in. (6.8mm) nominal, Plenum 0.264 in. (6.7mm) nominal
- Installation temperature range: 32°F to 122°F (0°C to 50°C)
- Operating temperature range: 14°F to 140°F (-10°C to 60°C)
- Characterized to 600 MHz, 350 MHz above the standard
- Descending length cable markings enable easy identification of remaining cable which reduces installation time and cable scrap
- Cable supplied in an easy payout EZBrake™ reel-in-a-box



Part Number	Part Description	Color‡	Std. Pkg. Qty. (Ft.)	Std. Ctn. Qty. (Ft.)
Riser				
PUR6504BU-UY	Enhanced, high-performance, Category 6, riser (CMR), 4-pair, UTP copper cable. Copper conductors are 23 AWG construction with polyolefin (PE) insulation. Conductors are twisted in pairs, separated by an integrated pair divider and protected by a flame-retardant PVC jacket.	Blue	1000	27000
Plenum				
PUP6504BU-UY	Enhanced, high-performance, Category 6, plenum (CMP), 4-pair, UTP copper cable. Copper conductors are 23 AWG construction with FEP insulation. Conductors are twisted in pairs, separated by an integrated pair divider and protected by a low smoke, flame-retardant PVC jacket.	Blue	1000	27000

‡For standard colors other than Blue, replace suffix BU (Blue) with WH (White), YL (Yellow), or IG (International Gray). Contact Customer Service for other color options.
Order number of pieces required, in multiples of 9,000 feet.

Labels for TX6500™ Enhanced Category 6 UTP Copper Cable



Suggested Label Solutions for TIA/EIA-606-A Compliance				
Cable Part Number	Laser/Ink Jet Desktop Printer Label	TDP43ME Thermal Transfer Desktop Printer Label	PanTher™ LS8E Hand-Held Printer Label	Cougar™ LS9 Hand-Held Printer Label
PUR6504**-UY PUP6504**-UY	S100X150YAJ	S100X150VATY	S100X150VAC	T100X000CBC-BK

For complete labeling solutions and product information, reference charts on pages O.1 – O.25.





TX6000™ High Performance Category 6 UTP Copper Cable

- Exceeds requirements of ANSI/TIA-568-C.2 Category 6 and ISO 11801 2nd Edition Class E channel standards
- Exceeds requirements of ANSI/TIA-568-C.2 and IEC 61156-5 Category 6 component standards
- Meets requirements of IEEE 802.3af and IEEE 802.3at for PoE applications
- Third party tested to comply with ANSI/TIA-568-C.2
- Cable diameter: Riser 0.240 in. (6.1mm) nominal, Plenum 0.236 in. (5.9mm) nominal
- Installation temperature range: 32°F to 122°F (0°C to 50°C)
- Operating temperature range: 14°F to 140°F (-10°C to 60°C)
- Characterized to 550 MHz, 300 MHz above the standard
- Descending length cable markings enable easy identification of remaining cable which reduces installation time and cable scrap
- Cable supplied in an easy payout EZBrake™ reel-in-a-box



Part Number	Part Description	Color‡	Std. Pkg. Qty. (Ft.)	Std. Ctn. Qty. (Ft.)
Riser				
PUR6004BU-UY	High performance, Category 6, riser (CMR), 4-pair, UTP copper cable. Copper conductors are 23 AWG construction with polyolefin (PE) insulation. Conductors are twisted in pairs, separated by an integrated pair divider, and protected by a flame-retardant PVC jacket.	Blue	1000	27000
Plenum				
PUP6004BU-UY	High performance, Category 6, plenum (CMP), 4-pair, UTP copper cable. Copper conductors are 23 AWG construction with FEP insulation. Conductors are twisted in pairs, separated by an integrated pair divider, and protected by a low smoke, flame-retardant PVC jacket.	Blue	1000	27000

‡For standard colors other than Blue, replace suffix BU (Blue) with WH (White), YL (Yellow), or IG (International Gray). Contact Customer Service for other color options.
Order number of pieces required, in multiples of 9,000 feet.

Labels for TX6000™ High Performance Category 6 UTP Copper Cable



Suggested Label Solutions for TIA/EIA-606-A Compliance				
Cable Part Number	Laser/Ink Jet Desktop Printer Label	TDP43ME Thermal Transfer Desktop Printer Label	PanTher™ LS8E Hand-Held Printer Label	Cougar™ LS9 Hand-Held Printer Label
PUR6004**-UY PUP6004**-UY	S100X150YAJ	S100X150VATY	S100X150VAC	T100X000CBC-BK

For complete labeling solutions and product information, reference charts on pages O.1 – O.25.



cUL US **Mini-Com® TX6™ PLUS UTP Jack Modules**

- Exceed ANSI/TIA-568-C.2 Category 6 and ISO 11801 2nd Edition Class E standards
- Meet requirements of IEEE 802.3af and IEEE 802.3at for PoE applications
- Each jack is 100% tested to ensure NEXT and RL performance and is individually serialized for traceability
- Color-coded, keyed jack modules mechanically and visually distinguish connections to prevent unintentional mating with unlike keyed or non-keyed modular plugs accommodating more discrete networks
- Utilize patent-pending enhanced Giga-TX™ Technology for jack terminations which optimizes performance by maintaining cable pair geometry and eliminating conductor untwist
- Contacts plated with 50 microinches of gold for superior performance
- No punchdown tool required; termination tool (EGJT) ensures conductors are fully terminated by utilizing a smooth forward motion without impact on critical internal components for maximum reliability
- Optional termination tool (TGJT) reduces termination time by 25%, ideal for high volume installations
- Can be re-terminated a minimum of twenty times
- White termination cap designates Category 6 performance and provides positive strain relief; helps control cable bend radius and securely retains wires
- Terminate 4-pair, 22 – 26 AWG, 100 ohm, solid or stranded twisted pair cable
- Universal termination cap is color-coded for T568A and T568B wiring schemes
- Accept 6 and 8-position modular plugs without damage
- Can be clearly identified with optional labels and icons
- Compatible with Mini-Com® Modular Patch Panels, Faceplates, and Surface Mount Boxes
- Optional RJ45 blockout device blocks out unauthorized access to jack modules and potentially harmful foreign objects, saving time and money associated with data security breaches, network downtime, repair, and hardware replacement
- Optional dust cap keeps out dust and debris while not in use



CJ688TGIW



CJK688TGBL

Part Number	Part Description	No. of Module Spaces	Color	Std. Pkg. Qty.	Std. Ctn. Qty.
Jack Module					
CJ688TGIW ‡	Category 6, RJ45, 8-position, 8-wire universal module.	1	Off White	1	50
Keyed Jack Module					
CJK688TGBL *	Keyed, Category 6, RJ45, 8-position, 8-wire universal module.	1	Black	1	50

‡For standard colors other than Off White, replace suffix IW (Off White) with EI (Electric Ivory), WH (White), AW (Arctic White), IG (International Gray), BL (Black), OR (Orange), RD (Red), BU (Blue), GR (Green), YL (Yellow), or VL (Violet).

*For standard colors other than Black, replace suffix BL (Black) with BU (Blue), RD (Red), YL (Yellow), GR (Green), or OR (Orange), each color representing a different keyed configuration.

Termination tools available on page B.97.

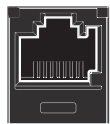
RJ45 blockout device available on page B.92.

Dust cap available on page B.97.

Contact Customer Service for bulk packaged jack modules.

To ensure optimal performance, Panduit recommends use with other Panduit TX6™ PLUS components.

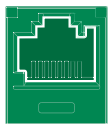
Keyed Geometry



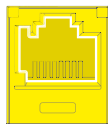
Black Key



Red Key



Green Key



Yellow Key



Orange Key



Blue Key



Black Key



Red Key



Green Key



Yellow Key



Orange Key



Blue Key

Mini-Com® TX6™ PLUS Corrosive Resistant UTP Jack Module

- Injected gel and polymer material reduce area of exposed electrical contacts providing improved long term performance in corrosive environments
- Exceed requirements of ANSI/TIA-568-C.2 Category 6, IEEE 802.3an-2006, and ISO 11801 Class E channel standards
- Meet requirements of IEEE 802.3af and IEEE 802.3at for PoE applications
- Each jack is 100% tested to ensure NEXT and RL performance and is individually serialized for traceability
- Utilizes patent-pending enhanced Giga-TX™ Technology for jack termination which optimizes performance by maintaining cable pair geometry and eliminating conductor untwist
- Contacts plated with 50 microinches of gold for superior performance
- No punchdown tool required; termination tool (EGJT) ensures conductors are fully terminated by utilizing a smooth forward motion without impact on critical internal components for maximum reliability
- Optional termination tool (TGJT) reduces termination time by 25%, ideal for high volume installations
- Can be re-terminated a minimum of twenty times
- White termination cap designates Category 6 performance and provides positive strain relief; helps control cable bend radius and securely retains wires
- Terminates 4-pair, 22 — 26 AWG, 100 ohm, solid or stranded twisted pair cable
- Universal termination cap is color-coded for T568A and T568B wiring schemes
- Accepts 6 and 8-position modular plugs without damage
- Can be clearly identified with optional labels and icons
- Compatible with Mini-Com® Modular Patch Panels, Faceplates and Surface Mount Boxes
- Optional RJ45 blockout device blocks out unauthorized access to jack modules and potentially harmful foreign objects, saving time and money associated with data security breaches, network downtime, repair, and hardware replacement
- Optional dust cap keeps out dust and debris while not in use
- Optional RJ45 lock-in device blocks unauthorized removal of cable, IP phone, other networking equipment, or critical connection



Part Number	Part Description	No. of Module Spaces	Color‡	Std. Pkg. Qty.	Std. Ctn. Qty.
CJE688TGIW	Category 6, RJ45, 8-position, 8-wire, universal, corrosive resistant UTP jack module	1	Off White	1	50

‡For standard colors other than Off White, replace suffix IW (Off White) with WH (White), BL (Black), RD (Red), or BU (Blue).

RJ45 blockout device available on page B.92.

Dust cap available on page B.97.

Component Labels for Mini-Com® TX6™ PLUS UTP Jack Modules



Suggested Label Solutions for TIA/EIA-606-A Compliance

Module Part Number	Laser/Ink Jet Desktop Printer Label	TDP43ME Thermal Transfer Desktop Printer Label	PanTher™ LS8E Hand-Held Printer Label	Cougar™ LS9 Hand-Held Printer Label
All TX6™ PLUS Jack Modules	C138X019FJJ	C138X019YPT	C138X019FJC	T019X000FJC-BK

For complete labeling solutions and product information, reference charts on pages O.1 – O.25.



Mini-Com® Ultimate ID® TX6™ PLUS Modular Patch Panel Kits

- Supplied with black Mini-Com® TX6™ PLUS Jack Modules
- Include color-coded termination caps
- Front access faceplates in panels
- Available with or without labels
- Can be clearly identified with the PanTher™ LS8E or Cougar™ LS9 Hand-Held Thermal Transfer Printers



UICMPPKA6G24BL



UICMPPK6G24BL

Part Number	Part Description	Labels Required	No. of Rack Spaces [^]	Std. Pkg. Qty.	Std. Ctn. Qty.
Mini-Com® Ultimate ID® Angled Modular Patch Panel Kit					
UICMPPKA6G24BL	24-port UICMPPA24BL angled patch panel with 24 CJ688TGGBL jack modules.	Six 4-Port	1	1	10
Mini-Com® Ultimate ID® Modular Patch Panel Kit					
UICMPPK6G24BL	24-port UICMPP24BL patch panel with 24 CJ688TGGBL jack modules.	Six 4-Port	1	1	10

[^]One rack space = 1.75" (44.45mm).
Includes #12-24 and metric M6 screws to mount the patch panel to the rack.
Ultimate ID® Labels can be found on pages O.11 – O.19.



Mini-Com® TX6™ PLUS Modular Patch Panel Kits

- Supplied with black Mini-Com® TX6™ PLUS Jack Modules
- Include color-coded termination caps
- Front access faceplates in panels
- Available with or without labels
- Include EGJT termination tool



CPPKA6G24WBL



CPPKLA6G24WBL



CPPK6G24WBL



CPPKL6G24WBL

Part Number	Part Description	No. of Rack Spaces [^]	Std. Pkg. Qty.	Std. Ctn. Qty.
Mini-Com® Angled Modular Patch Panel Kits – with Labels				
CPPKA6G24WBL	24-port angled patch panel with 24 CJ688TGGBL jack modules.	1	1	10
CPPKLA6G24WBL	24-port CPPLA24WBL angled patch panel with 24 CJ688TGGBL jack modules.	1	1	10
Mini-Com® Modular Patch Panel Kits – with Labels				
CPPK6G24WBL	24-port CPP24WBL patch panel with 24 CJ688TGGBL jack modules.	1	1	10
CPPKL6G24WBL	24-port CPPPL24WBL patch panel with 24 CJ688TGGBL jack modules.	1	1	10

[^]One rack space = 1.75" (44.45mm).
Includes #12-24 and metric M6 screws to mount the patch panel to the rack.





DP6™ PLUS UTP Patch Panels

- Exceed ANSI/TIA-568-C.2 Category 6 and ISO 11801 2nd Edition Class E standards
- Meet requirements of IEEE 802.3af and IEEE 802.3at for PoE applications
- Each port is 100% tested to ensure NEXT and RL performance and is individually serialized to support traceability
- Utilize 110 punchdown termination on back panel and includes retention cap for each port
- Each port contains a universal label that is color-coded for T568A and T568B wiring schemes
- Angled versions allow for higher density applications by easily routing the patch cords to each side of the panel eliminating the need for horizontal cable management
- Terminate 4-pair, 22 – 26 AWG, 100 ohm, solid or stranded twisted pair cable
- Mount to standard EIA 19" rack or 23" racks with optional extender bracket
- Write-on areas for port and panel identification
- Can be clearly identified with labels and icons
- Optional label kits (DPLK24 and DPLK48) contain adhesive label holder and labels for easy port and panel identification



DPA24688TGY



DPA48688TGY



DP12688TGY



DP24688TGY



DP48688TGY

Part Number	Part Description	No. of Rack Spaces [^]	Std. Pkg. Qty.	Std. Ctn. Qty.
DP6™ PLUS Angled Patch Panels				
DPA24688TGY	24-port, angled, Category 6, patch panel with 24 RJ45, 8-position, 8-wire ports.	1	1	10
DPA48688TGY	48-port, angled, Category 6, patch panel with 48 RJ45, 8-position, 8-wire ports.	2	1	10

Part Number	Part Description	No. of Rack Spaces [^]	Std. Pkg. Qty.	Std. Ctn. Qty.
DP6™ PLUS Flat Patch Panels				
DP12688TGY	12-port, Category 6, patch panel with twelve RJ45, 8-position, 8-wire ports. Mounts to 89D wall mount bracket.	—	1	10
DP24688TGY	24-port, Category 6, patch panel with 24 RJ45, 8-position, 8-wire ports.	1	1	10
DP48688TGY	48-port, Category 6, patch panel with 48 RJ45, 8-position, 8-wire ports.	2	1	10

[^]One rack space = 1.75" (44.45mm).
M6 and #12-24 mounting screws included.
Replaceable punchdown modules available, part number DRJ688TGBL.
Termination tool (PDT110) available on page B.91.
89D wall mount bracket available on page B.72.

Component Labels for DP6™ PLUS UTP Patch Panels



Suggested Label Solutions for TIA/EIA-606-A Compliance				
Patch Panel Part Number	Laser/Ink Jet Desktop Printer Label	TDP43ME Thermal Transfer Desktop Printer Label	PanTher™ LS8E Hand-Held Printer Label	Cougar™ LS9 Hand-Held Printer Label
All Patch Panels on this Page	C379X030FJJ	C379X030YPT	C379X030FJC	T031X000FJC-BK

For complete labeling solutions and product information, reference charts on pages O.1 – O.25.



Mini-Com[®] Category 6 UTP Coupler Module

- Designed to exceed performance requirements of the ANSI/TIA-568-C.2 Category 6 and ISO 11801 2nd Edition Class E channel standards
- Meet requirements of IEEE 802.3af and IEEE 802.3at for PoE applications
- RJ45 8-position, 8-wire female to RJ45 8-position, 8-wire female pass-through module provides fast and easy plug and play connection of 6 and 8-position RJ45 patch cords
- No tools required
- 100% tested to ensure NEXT and RL performance and is individually serialized for traceability
- Contacts plated with 50 microinches of gold for superior performance
- Can be clearly identified with optional labels and icons
- Compatible with Mini-Com[®] Modular Patch Panels and Faceplates; not suitable for surface mount box applications
- Optional RJ45 blockout device blocks out unauthorized access to jack modules and potentially harmful foreign objects, saving time and money associated with data security breaches, network downtime, repair, and hardware replacement
- Optional dust cap keeps out dust and debris while not in use



Part Number	Part Description	No. of Module Spaces	Color‡	Std. Pkg. Qty.	Std. Ctn. Qty.
CC688IW	Category 6, RJ45, 8-position, 8-wire universal coupler module.	1	Off White	1	50

‡For other colors replace suffix IW (Off White) with BL (Black).
 Acts as one connecting hardware component in channel.
 RJ45 blockout device available on page B.92.
 Dust cap available on page B.97.
 TX6™ PLUS UTP Patch Cords available on page B.34.

Component Labels for Mini-Com[®] Category 6 UTP Coupler Module



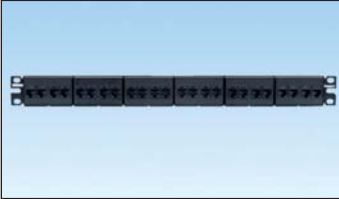
Suggested Label Solutions for TIA/EIA-606-A Compliance

Module Part Number	Laser/Ink Jet Desktop Printer Label	TDP43ME Thermal Transfer Desktop Printer Label	PanTher™ LS8E Hand-Held Printer Label	Cougar™ LS9 Hand-Held Printer Label
CC688IW	C138X019FJJ	C138X019YPT	C138X019FJC	T019X000FJC-BK

For complete labeling solutions and product information, reference charts on pages O.1 – O.25.

Category 6 Coupler Patch Panel

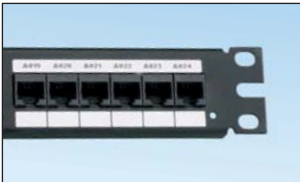
- Coupler panel ports provide fast and easy plug and play connection of 6 and 8-position RJ45 patch cords
- No tools required
- Designed to exceed performance requirements of the ANSI/TIA-568-C.2 Category 6 and ISO 11801 2nd Edition Class E channel standards
- Contacts plated with 50 microinches of gold for superior performance
- Can be clearly identified with optional labels and icons
- Mounts to standard EIA 19" rack or 23" racks with optional extender bracket



Part Number	Part Description	No. of Rack Spaces [^]	Std. Pkg. Qty.	Std. Ctn. Qty.
CP24688BL	24-port, Category 6, patch panel with 24 pre-installed RJ45 Category 6 channel compliant couplers.	1	1	10

[^]One rack space = 1.75" (44.45mm).
M6 and #12-24 mounting screws included.
Each coupler module acts as one connecting hardware component in a channel.
TX6™ PLUS UTP Patch Cords available on page B.34.

Component Labels for Category 6 Coupler Patch Panel



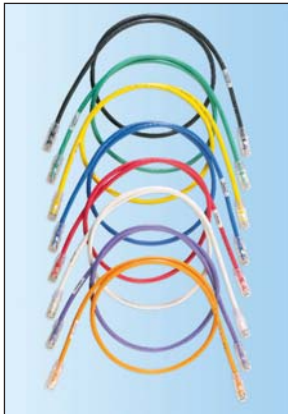
Suggested Label Solutions for TIA/EIA-606-A Compliance				
Part Number	Laser/Ink Jet Desktop Printer Label	TDP43ME Thermal Transfer Desktop Printer Label	PanTher™ LS8E Hand-Held Printer Label	Cougar™ LS9 Hand-Held Printer Label
CP24688BL	C252X030FJJ	C252X030YPT	C252X030FJC	T031X000FJC-BK

For complete labeling solutions and product information, reference charts on pages O.1 – O.25.

UL LISTED SF TX6™ PLUS UTP Patch Cords

- Exceed ANSI/TIA-568-C.2 Category 6 and ISO 11801 Class E standards
- Meet requirements of IEEE 802.3af and IEEE 802.3at for PoE applications
- Each patch cord is 100% performance tested to component limits and wired T568B
- Color-coded, keyed modular plugs mechanically and visually distinguish connections to prevent unintentional mating with unlike keyed or non-keyed jack modules accommodating more discrete networks
- Constructed of Category 6, 24 AWG UTP stranded cable and TX6™ PLUS Modular Plugs; plug contacts plated with 50 microinches of gold for superior performance
- Plug meets all applicable ANSI/TIA/EIA-968-A requirements and exceeds IEC 60603-7 specifications
- Slender strain relief boot provides easy access in high density applications

- Plug uses an integral pair manager to optimize performance and consistency by reducing untwisting of conductors within the plug
- Perform in center of TIA/EIA component range, ensuring interoperability and excellent performance
- Labels on patch cords provide identification of performance level, length, and quality control number
- Patented tangle-free latch prevents snags and provides easy release, saving time on frequent moves, adds, and changes
- Optional patch cord color bands snap on and off individual patch cables offering endless color-coding options
- Optional RJ45 plug lock-in device blocks unauthorized removal of cable, IP phone, other networking equipment, or critical connection
- Third party tested for Category 6 component compliance



Part Number	Part Description	Length (Ft.)	Cable Color	Std. Pkg. Qty.	Std. Ctn. Qty.
Patch Cord					
UTPSP3Y‡	Category 6, UTP patch cord with TX6™ PLUS Modular Plugs on each end.	3	Off White	1	10

Keyed Patch Cord					
UTPKSP3BL*	Keyed, Category 6, UTP patch cord with TX6™ PLUS Keyed Modular Plug on one end and TX6™ PLUS Non-Keyed Modular Plug on the other end.	3	Black	1	10

‡For lengths 1 to 20 feet (increments of one foot) and 25, 30, 35, 40 feet change the length designation in the part number to the desired length. For standard cable colors other than Off White, add suffix BL (Black), BU (Blue), GR (Green), RD (Red), YL (Yellow), OR (Orange), or VL (Violet) before Y at the end of the part number. For example, the part number for a blue 15-foot patch cord is UTPSP15BUY.

*For lengths other than 3 feet (5, 7, 10, 14 feet) change the length designation in the part number to the desired length. For standard cable colors other than Black, replace suffix BL (Black) with BU (Blue), RD (Red), YL (Yellow), GR (Green), or OR (Orange), each color representing a different keyed configuration.

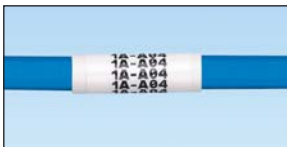
Contact customer service for universal reference patch cords.

Patch cord color bands available on page B.96.

RJ45 plug lock-in device available on page B.94.

To ensure optimal performance, Panduit recommends use with other Panduit TX6™ PLUS components.

Labels for TX6™ PLUS UTP Patch Cords



Suggested Label Solutions for TIA/EIA-606-A Compliance				
Patch Cord Part Number	Laser/Ink Jet Desktop Printer Label	TDP43ME Thermal Transfer Desktop Printer Label	PanTher™ LS8E Hand-Held Printer Label	Cougar™ LS9 Hand-Held Printer Label
All Patch Cords	S100X150YAJ	S100X150VATY	S100X150VAC	T100X000CBC-BK

For complete labeling solutions and product information, reference charts on pages O.1 – O.25.



TX6™ PLUS UTP Modular Plug

- Meets all applicable ANSI/TIA-968-A requirements and exceeds IEC 60603-7 specifications
- Meet requirements of IEEE 802.3af and IEEE 802.3at for PoE applications
- Used in UTPSP series patch cords providing Category 6 performance
- Patented tangle-free latch prevents snags and provides easy release saving time on frequent moves, adds, and changes
- Integral pair manager optimizes performance and consistency by reducing untwist at plug
- Contacts plated with 50 microinches of gold for superior performance
- Terminates 24 AWG, 100 ohm, stranded or solid conductor with max. conductor insulation diameter of 0.041 in.



Part Number	Part Description	Std. Pkg. Qty.	Std. Ctn. Qty.
SP688-C	8-position, 8-wire modular plug.	100	1000

To ensure optimal performance, Panduit recommends use with other Panduit TX6™ PLUS components. MPT5-8AS crimp tool required for termination, available on page B.98.



cUL us **Mini-Com® TX6™ PLUS Shielded Jack Modules**

- Exceed requirements of ANSI/TIA-568-C.2 Category 6, IEEE 802.3an-2006, and ISO 11801 Class E channel standards
- Meet requirements of IEEE 802.af and IEEE 802.3at for PoE applications
- Each jack is 100% tested to ensure NEXT and RL performance and is individually serialized for traceability
- Color-coded, keyed jack modules mechanically and visually distinguish connections to prevent unintentional mating with unlike keyed or non-keyed modular plugs accommodating more discrete networks
- Utilize patent-pending enhanced Giga-TX™ Technology for jack terminations which optimizes performance by maintaining cable pair geometry and eliminating conductor untwist
- Fully grounded and bonded to patch panel when installed in Panduit All Metal Modular Patch Panel
- Contacts plated with 50 microinches of gold for superior performance
- No punchdown tool required; termination tool (EGJT) ensures conductors are fully terminated by utilizing a smooth forward motion without impact on critical internal components for maximum reliability
- Optional termination tool (TGJT) reduces termination time by 25%, ideal for high volume installations
- Can be re-terminated a minimum of twenty times
- Off white termination cap designates Category 6 performance and provides positive strain relief; helps control cable bend radius and securely retains wires
- Terminate 4-pair, 22 – 26 AWG, 100 ohm, solid or stranded shielded twisted pair cable
- Universal termination cap is color-coded for T568A and T568B wiring schemes
- Integrated strain relief with wire cap provides 360° conductive path for grounding
- 0.187 in. tab provides conductive path for grounding individual jacks
- Accept 6 and 8-position modular plugs without damage
- Can be clearly identified with optional labels and icons
- Compatible with Mini-Com® Modular Patch Panels, Faceplates, and Surface Mount Boxes
- Optional RJ45 blockout device blocks out unauthorized access to jack modules and potentially harmful foreign objects, saving time and money associated with data security breaches, network downtime, repair, and hardware replacement
- Optional dust cap keeps out dust and debris while not in use



CJS688TGY



CJSK688TGBL

Part Number	Part Description	No. of Module Spaces	Color	Std. Pkg. Qty.	Std. Ctn. Qty.
Jack Module					
CJS688TGY	Category 6, RJ45, 8-position, 8-wire universal shielded black module with integral shield.	1	Black	1	50
Keyed Jack Module					
CJSK688TGBL*	Keyed, Category 6, RJ45, 8-position, 8-wire universal shielded black module with integral shield.	1	Black	1	50

*For standard colors other than Black, replace suffix BL (Black) with BU (Blue), RD (Red), YL (Yellow), GR (Green), OR (Orange), VL (Violet), or GY (Gray), each color representing a different keyed configuration. Termination tools available on page B.97.

Shield grounding requires proper installation of shielded jack module and the use of shielded patch cords and cable. All metal modular patch panels available on page B.72.

For grounding shielded modules not installed in a shielded patch panel, see the shielded jack module grounding kit, CJSJK-XY on page M.23.

RJ45 blockout device available on page B.92.

Dust cap available on page B.97.

To ensure optimal performance, Panduit recommends use with other Panduit TX6™ PLUS components.

Contact customer service for bulk packaged jack modules.

 Mini-Com® TX6™ PLUS Shielded Jack Modules (continued)

Keyed Geometry



Black Key



Red Key



Green Key



Yellow Key



Orange Key



Blue Key



Violet Key



Intl. Gray Key



Black Key



Red Key



Green Key



Yellow Key



Orange Key



Blue Key



Violet Key



Intl. Gray Key

Component Labels for Mini-Com® TX6™ PLUS Shielded Jack Modules



Suggested Label Solutions for TIA/EIA-606-A Compliance

Module Part Number	Laser/Ink Jet Desktop Printer Label	TDP43ME Thermal Transfer Desktop Printer Label	PanTher™ LS8E Hand-Held Printer Label	Cougar™ LS9 Hand-Held Printer Label
All TX6™ PLUS Jack Modules	C138X019FJJ	C138X019YPT	C138X019FJC	T019X000FJC-BK

For complete labeling solutions and product information, reference charts on pages O.1 – O.25.



cUL_{us} TX6™ PLUS Shielded Modular Plug

- Meets all applicable ANSI/TIA-968-A requirements and exceeds IEC 60603-7 specifications
- Meet requirements of IEEE 802.3af and IEEE 802.3at for PoE applications
- Used in STP6X series patch cords providing Category 6 performance
- Patented tangle-free latch prevents snags and provides easy release saving time on frequent moves, adds, and changes
- Slender strain relief boot provides easy access in high density applications
- Integral pair manager optimizes performance and consistency by reducing untwist at plug
- Contacts plated with 50 microinches of gold for superior performance
- Shielded plug housing provides conductive path for grounding
- Terminates 24 – 26 AWG, 100 ohm, stranded or solid shielded cable with max. conductor insulation diameter of 0.040 in.



Part Number	Part Description	Std. Pkg. Qty.	Std. Ctn. Qty.
SPS688-C	8-position, 8-wire shielded modular plug.	100	1000

To ensure optimal performance, Panduit recommends use with other Panduit TX6™ PLUS components. MPT5-8AS crimp tool required for termination. Termination tool available on page B.98.



TX5500™ Enhanced Category 5e UTP Copper Cable

- Exceeds requirements of ANSI/TIA-568-C.2 Category 5e and ISO 11801 2nd Edition Class D channel standards
- Exceeds requirements of ANSI/TIA-568-C.2 and IEC 61156-5 Category 5e component standards
- Third party tested to Category 5e channel compliance
- Meets requirements of IEEE 802.3af and IEEE 802.3at for PoE applications
- Cable diameter: Riser 0.225 in. (5.7mm) nominal, Plenum 0.193 in. (4.9mm) nominal
- Installation temperature range: 32°F to 122°F (0°C to 50°C)
- Operating temperature range: 14°F to 140°F (-10°C to 60°C)
- Channel characterized to 450 MHz, 350 MHz above the standard
- Descending length cable markings enable easy identification of remaining cable which reduces installation time and cable scrap
- Cable supplied in an easy payout box



PUR5504WH-UY

Part Number	Part Description	Color‡	Std. Pkg. Qty. (Ft.)	Std. Ctn. Qty. (Ft.)
Riser				
PUR5504BU-UY	Enhanced Category 5e, riser (CMR), 4-pair, UTP copper cable. Copper conductors are 24 AWG construction with polyolefin (PE) insulation. Conductors are twisted in pairs and protected by a flame-retardant PVC jacket.	Blue	1000	39000
Plenum				
PUP5504BU-UY	Enhanced Category 5e, plenum (CMP), 4-pair, UTP copper cable. Copper conductors are 24 AWG construction with FEP insulation. Conductors are twisted in pairs and placed in a low smoke, flame-retardant PVC jacket.	Blue	1000	39000

‡For standard colors other than Blue, replace BU (Blue) with WH (White), YL (Yellow), or IG (International Gray). Contact Customer Service for other color options.
Order number of pieces required, in multiples of 13,000 feet.

Labels for TX5500™ Enhanced Category 5e UTP Copper Cable



Suggested Label Solutions for TIA/EIA-606-A Compliance				
Cable Part Number	Laser/Ink Jet Desktop Printer Label	TDP43ME Thermal Transfer Desktop Printer Label	PanTher™ LS8E Hand-Held Printer Label	Cougar™ LS9 Hand-Held Printer Label
PUR5504**-UY PUP5504**-UY	S100X150YAJ	S100X150VATY	S100X150VAC	T100X000CBC-BK

For complete labeling solutions and product information, reference charts on pages O.1 – O.25.



Mini-Com® TX5e™ UTP Jack Modules

- Exceed ANSI/TIA-568-C.2 Category 5e and ISO 11801 2nd Edition Class D standards
- Meet requirements of IEEE 802.3af and IEEE 802.3at for PoE applications
- Each jack is 100% tested to ensure NEXT and RL performance and is individually serialized for traceability
- Color-coded, keyed jack modules mechanically and visually distinguish connections to prevent unintentional mating with unlike keyed or non-keyed modular plugs accommodating more discrete networks
- Utilize patent-pending enhanced Giga-TX™ Technology for jack terminations which optimizes performance by maintaining cable pair geometry and eliminating conductor untwist
- Contacts plated with 50 microinches of gold for superior performance
- No punchdown tool required; termination tool (EGJT) ensures conductors are fully terminated by utilizing a smooth forward motion without impact on critical internal components for maximum reliability
- Optional termination tool (TGJT) reduces termination time by 25%, ideal for high volume installations
- Can be re-terminated a minimum of twenty times
- Red termination cap designates Category 5e performance and provides positive strain relief; helps control cable bend radius and securely retains wires
- Terminate 4-pair, 22 – 26 AWG, 100 ohm, solid or stranded twisted pair cable
- Universal termination cap is color-coded for T568A and T568B wiring schemes
- Accept 6 and 8-position modular plugs without damage
- Can be clearly identified with optional labels and icons
- Compatible with Mini-Com® Modular Patch Panels, Faceplates, and Surface Mount Boxes
- Optional RJ45 blockout device blocks out unauthorized access to jack modules and potentially harmful foreign objects, saving time and money associated with data security breaches, network downtime, repair, and hardware replacement
- Optional dust cap keeps out dust and debris while not in use



CJ5E88TGIW



CJK5E88TGBL

Part Number	Part Description	No. of Module Spaces	Color‡	Std. Pkg. Qty.	Std. Ctn. Qty.
Jack Module					
CJ5E88TGIW‡	Category 5e, RJ45, 8-position, 8-wire universal jack module.	1	Off White	1	50

Keyed Jack Module					
CJK5E88TGBL*	Keyed, Category 5e, RJ45, 8-position, 8-wire universal module.	1	Black	1	50

‡For standard colors other than Off White, replace suffix IW (Off White) with EI (Electric Ivory), WH (White), AW (Arctic White), IG (International Gray), BL (Black), OR (Orange), RD (Red), BU (Blue), GR (Green), YL (Yellow) or VL (Violet).

*For standard colors other than Black, replace suffix BL (Black) with BU (Blue), RD (Red), YL (Yellow), GR (Green) or OR (Orange), each color representing a different keyed configuration.

Termination tools available on page B.97.
RJ45 blockout device available on page B.92.

Dust cap available on page B.97.

Contact customer service for bulk packaged jack modules.

Mini-Com® TX5e™ UTP Jack Modules (continued)

Keyed Geometry



Black Key



Red Key



Green Key



Yellow Key



Orange Key



Blue Key



Black Key



Red Key



Green Key



Yellow Key



Orange Key



Blue Key

Component Labels for Mini-Com® TX5e™ UTP Jack Modules



Suggested Label Solutions for TIA/EIA-606-A Compliance				
Module Part Number	Laser/Ink Jet Desktop Printer Label	TDP43ME Thermal Transfer Desktop Printer Label	PanTher™ LS8E Hand-Held Printer Label	Cougar™ LS9 Hand-Held Printer Label
All TX5e™ Jack Modules	C138X019FJJ	C138X019YPT	C138X019FJC	T019X000FJC-BK

For complete labeling solutions and product information, reference charts on pages O.1 – O.25.

Mini-Com[®] TX5e[™] Corrosive Resistant UTP Jack Module

- Injected gel and polymer material reduce area of exposed electrical contacts providing improved long term performance in corrosive environments
- Exceed requirements of ANSI/TIA-568-C.2 Category 5e, IEEE 802.3an-2006, and ISO 11801 Class D channel standards
- Exceed requirements of ANSI/TIA-568-C.2 Category 5e and IEC 61156-5 Category 5e component standards
- Meet requirements of IEEE 802.3af and IEEE 802.3at for PoE applications
- Each jack is 100% tested to ensure NEXT and RL performance and is individually serialized for traceability
- Utilizes patent-pending enhanced Giga-TX[™] Technology for jack terminations which optimizes performance by maintaining cable pair geometry and eliminating conductor untwist
- Contacts plated with 50 microinches of gold for superior performance
- No punchdown tool required; termination tool (EGJT) ensures conductors are fully terminated by utilizing a smooth forward motion without impact on critical internal components for maximum reliability
- Optional termination tool (TGJT) reduces termination time by 25%, ideal for high volume installations
- Can be re-terminated a minimum of twenty times
- Red termination cap designates Category 5e performance and provides positive strain relief; helps control cable bend radius and securely retains wires
- Terminates 4-pair, 22 – 26 AWG, 100 ohm, solid or stranded twisted pair cable
- Universal termination cap is color-coded for T568A and T568B wiring schemes
- Accepts 6 and 8-position modular plugs without damage
- Can be clearly identified with optional labels and icons
- Compatible with Mini-Com[®] Modular Patch Panels, Faceplates, and Surface Mount Boxes
- Optional RJ45 blockout device blocks out unauthorized access to jack modules and potentially harmful foreign objects, saving time and money associated with data security breaches, network downtime, repair, and hardware replacement
- Optional dust cap keeps out dust and debris while not in use



Part Number	Part Description	No. of Module Spaces	Color‡	Std. Pkg. Qty.	Std. Ctn. Qty.
CJE5E88TGIW	Corrosive resistant, Category 5e, RJ45, 8-position, 8-wire universal module.	1	Off White	1	50

‡For standard colors other than Off White, replace suffix IW (Off White) with WH (White), BL (Black), RD (Red), or BU (Blue).

Termination tools available on page B.97.

RJ45 blockout device available on page B.92.

Dust cap available on page B.97.

Component Labels for Mini-Com[®] TX5e[™] Corrosive Resistant UTP Jack Module



Suggested Label Solutions for TIA/EIA-606-A Compliance

Part Number	Laser/Ink Jet Desktop Printer Label	TDP43ME Thermal Transfer Desktop Printer Label	PanTher [™] LS8E Hand-Held Printer Label	Cougar [™] LS9 Hand-Held Printer Label
CJE5E88TG**	C138X019FJJ	C138X019YPT	C138X019FJC	T019X000FJC-BK

For complete labeling solutions and product information, reference charts on pages O.1 – O.25.



DP5e™ UTP Patch Panels

- Exceed ANSI/TIA-568-C.2 Category 5e and ISO 11801 Class D standards
- Meet requirements of IEEE 802.3af and IEEE 802.3at for PoE applications
- Each port is 100% tested to ensure NEXT and RL performance and is individually serialized to support traceability
- Utilize 110 termination on back panel and includes retention cap for each port
- Each port contains a universal label that is color-coded for T568A and T568B wiring schemes
- Contacts plated with 50 microinches of gold for superior performance

- Angled versions allow for higher density installations by easily routing the patch cords to each side of the panel eliminating the need for horizontal cable management
- Terminate 4 pair, 22 - 26 AWG, 100 ohm, solid or stranded twisted pair cable
- Mount to standard EIA 19" rack or 23" racks with optional extender bracket
- Write-on areas for port and panel identification
- Can be clearly identified with labels and icons
- Optional label kits (DPLK24 and DPLK48) contain adhesive label holder and labels for easy port and panel identification



DPA245E88TGY



DPA485E88TGY



DP125E88TGY



DP245E88TGY



DP485E88TGY

Part Number	Part Description	No. of Rack Spaces [^]	Std. Pkg. Qty.	Std. Ctn. Qty.
DP5e™ Angled Patch Panels				
DPA245E88TGY	24-port, Category 5e, patch panel with 24 RJ45, 8-position, 8-wire ports.	1	1	10
DPA485E88TGY	48-port, Category 5e, patch panel with 48 RJ45, 8-position, 8-wire ports.	2	1	10

Part Number	Part Description	No. of Rack Spaces [^]	Std. Pkg. Qty.	Std. Ctn. Qty.
DP5e™ Flat Patch Panels				
DP125E88TGY	12-port, Category 5e, patch panel with twelve RJ45, 8-position, 8-wire ports. Mounts to 89D wall mount bracket.	—	1	10
DP245E88TGY	24-port, Category 5e, patch panel with 24 RJ45, 8-position, 8-wire ports.	1	1	10
DP485E88TGY	48-port, Category 5e, patch panel with 48 RJ45, 8-position, 8-wire ports.	2	1	10

[^]One rack space = 1.75" (44.45mm).
M6 and #12-24 mounting screws included.
Replaceable punchdown modules available, part number DRJ5E88TGBL.
Termination tool (PDT110) available on page B.91.
89D wall mount bracket available on page B.72.

Component Labels for DP5e™ UTP Patch Panels



Suggested Label Solutions for TIA/EIA-606-A Compliance				
Patch Panel Part Number	Laser/Ink Jet Desktop Printer Label	TDP43ME Thermal Transfer Desktop Printer Label	PanTher™ LS8E Hand-Held Printer Label	Cougar™ LS9 Hand-Held Printer Label
All Patch Panels on this page	C379X030FJJ	C379X030YPT	C379X030FJC	T031X000FJC-BK

For complete labeling solutions and product information, reference charts on pages O.1 – O.25.



cUL^{us} Mini-Com® Category 5e UTP Coupler Module

- Designed to exceed performance requirements of the ANSI/TIA-568-C.2 Category 5e and ISO 11801 2nd Edition Class D channel standards
- Meet requirements of IEEE 802.3af and IEEE 802.3at for PoE applications
- RJ45 8-position, 8-wire female to RJ45 8-position, 8-wire female pass-through module provides fast and easy plug and play connection of 6 and 8-position RJ45 patch cords
- No tools required
- 100% tested to ensure NEXT and RL performance and is individually serialized for traceability
- Contacts plated with 50 microinches of gold for superior performance
- Can be clearly identified with optional labels and icons
- Compatible with Mini-Com® Modular Patch Panels and Faceplates; not suitable for surface mount box applications
- Optional RJ45 blockout device blocks out unauthorized access to jack modules and potentially harmful foreign objects, saving time and money associated with data security breaches, network downtime, repair, and hardware replacement
- Optional dust cap keeps out dust and debris while not in use



Part Number	Part Description	No. of Module Spaces	Color‡	Std. Pkg. Qty.	Std. Ctn. Qty.
CC5E88IW	Category 5e, RJ45, 8-position, 8-wire universal coupler module.	1	Off White	1	50

‡For other colors replace suffix IW (Off White) with BL (Black).
Acts as one connecting hardware component in channel.
RJ45 blockout device available on page B.92.
Dust cap available on page B.97.
TX5e™ UTP Patch Cords available on page B.46.

Component Labels for Mini-Com® Category 5e UTP Coupler Module



Suggested Label Solutions for TIA/EIA-606-A Compliance

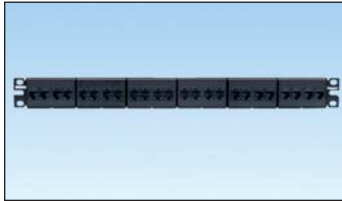
Part Number	Laser/Ink Jet Desktop Printer Label	TDP43ME Thermal Transfer Desktop Printer Label	PanTher™ LS8E Hand-Held Printer Label	Cougar™ LS9 Hand-Held Printer Label
CC5E88IW	C138X019FJJ	C138X019YPT	C138X019FJC	T019X000FJC-BK

For complete labeling solutions and product information, reference charts on pages O.1 – O.25.



Category 5e Coupler Patch Panel

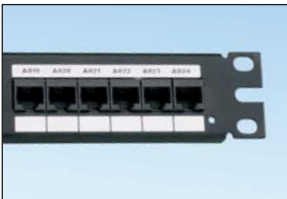
- Coupler panel ports provide fast and easy plug and play connection of 6 and 8-position RJ45 patch cords
- No tools required
- Designed to exceed ANSI/TIA-568-C.2 Category 5e and all ISO 11801 2nd Edition Class D channel standard requirements at swept frequencies up to 100 MHz
- Contacts plated with 50 microinches of gold for superior performance
- Can be clearly identified with optional labels and icons
- Mounts to standard EIA 19" rack or 23" racks with optional extender bracket



Part Number	Part Description	No. of Rack Spaces [^]	Std. Pkg. Qty.	Std. Ctn. Qty.
CP245E88BLY	24-port, Category 5e, patch panel with 24 pre-installed RJ45 Category 5e channel compliant couplers.	1	1	10

[^]One rack space = 1.75" (44.45mm).
M6 and #12-24 mounting screws included.
Each coupler module acts as one connecting hardware component in a channel.
TX5e™ UTP Patch Cords available on page B.46.

Component Labels for Category 5e Coupler Patch Panel



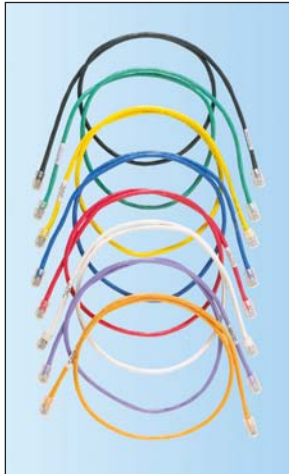
Suggested Label Solutions for TIA/EIA-606-A Compliance				
Part Number	Laser/Ink Jet Desktop Printer Label	TDP43ME Thermal Transfer Desktop Printer Label	PanTher™ LS8E Hand-Held Printer Label	Cougar™ LS9 Hand-Held Printer Label
CP245E88BLY	C252X030FJJ	C252X030YPT	C252X030FJC	T031X000FJC-BK

For complete labeling solutions and product information, reference charts on pages O.1 – O.25.



c TX5e™ UTP Patch Cords

- Exceed ANSI/TIA-568-C.2 Category 5e and ISO 11801 Class D standards
- Meet requirements of IEEE 802.3af and IEEE 802.3at for PoE applications
- Color-coded, keyed modular plugs mechanically and visually distinguish connections to prevent unintentional mating with unlike keyed or non-keyed jack modules accommodating more discrete networks
- Each patch cord is 100% performance tested to component limits and wired to T568A
- Constructed of Category 5e, 24 AWG UTP stranded cable and Pan-Plug® Modular Plugs; plug contacts plated with 50 microinches of gold for superior performance
- Plug meets all applicable ANSI/TIA/EIA-968-A requirements and exceeds IEC 60603-7 specifications
- Patented tangle-free latch prevents snags and provides easy release, saving time on frequent moves, adds, and changes
- Labels on patch cords provide identification of performance level, length, and quality control number
- Optional patch cord color bands snap on and off individual patch cables offering endless color-coding options
- Optional RJ45 plug lock-in device blocks unauthorized removal of cable, IP phone, other networking equipment, or critical connection
- Third party tested to Category 5e component compliance



Part Number	Part Description	Length (Ft.)	Cable Color	Std. Pkg. Qty.	Std. Ctn. Qty.
Patch Cords					
UTPCH3Y‡	Category 5e, UTP patch cord with Pan-Plug™ Modular Plugs on each end.	3	Off White	1	10
Keyed Patch Cords					
UTPKCH3BL*	Keyed, Category 5e, UTP patch cord with Pan-Plug™ Keyed Modular Plug on one end and Pan-Plug™ Non-Keyed Modular Plug on the other end.	3	Black	1	10

‡For lengths 1 to 20 feet (increments of one foot) and 25, 30, 35, 40 feet change the length designation in the part number to the desired length. For standard cable colors other than Off White, add suffix BL (Black), BU (Blue), GR (Green), RD (Red), YL (Yellow), OR (Orange), or VL (Violet) before the Y in the part number. For example, the part number for a blue 15-foot patch cord is UTPCH15BUY.

*For lengths other than 3 feet (5, 7, 10, 14 feet) change the length designation in the part number to the desired length. For standard cable colors other than Black, replace suffix BL (Black) with BU (Blue), RD (Red), YL (Yellow), GR (Green), or OR (Orange), each color representing a different keyed configuration.

Contact customer service for universal reference patch cords.

Patch cord color bands available on page B.91.

RJ45 plug lock-in device available on page B.94.

Labels for TX5e™ UTP Patch Cords



Suggested Label Solutions for TIA/EIA-606-A Compliance				
Patch Cord Part Number	Laser/Ink Jet Desktop Printer Label	TDP43ME Thermal Transfer Desktop Printer Label	PanTher™ LS8E Hand-Held Printer Label	Cougar™ LS9 Hand-Held Printer Label
All Patch Cords	S100X150YAJ	S100X150VATY	S100X150VAC	T100X000CBC-BK

For complete labeling solutions and product information, reference charts on pages O.1 – O.25.



Pan-Plug® Category 5e UTP Modular Plugs

- Meet all applicable ANSI/TIA-968-A requirements and exceeds IEC 60603-7 specifications
- Meet requirements of IEEE 802.3af and IEEE 802.3at for PoE applications
- Used in UTPCH series patch cords providing Category 5e performance
- Patented tangle-free plug latch prevents snags and provides easy release saving time on frequent moves, adds, and changes
- Simplified termination requires no loading bar; guide ramp facilitates easy conductor insertion and termination
- Contacts plated with 50 microinches of gold for superior performance
- Terminate 24 AWG, 100 ohm, stranded or solid conductor with max. conductor insulation diameter of 0.040"



Part Number	Part Description	Std. Pkg. Qty.	Std. Ctn. Qty.
MP588-L	8-position, 8-wire modular plug.	50	250
MP588-C	8-position, 8-wire modular plug.	100	1000
MP588-M	8-position, 8-wire modular plug.	1000	5000

MPT5-8AS crimp tool required for termination, available on page B.98.



TX5500™ Category 5e F/UTP Shielded Copper Cable

- Exceeds requirements of ANSI/TIA-568-C.2 Category 5e and ISO 11801 2nd Edition Class D channel standards
- Exceeds requirements of ANSI/TIA-568-C.2 Category 5e and IEC 61156-5 Category 5e component standards
- Meets requirements of IEEE 802.3af and IEEE 802.3at for PoE applications
- Cable diameter: Riser 0.241 inch (6.1 mm), Plenum 0.229 inch (5.8mm)
- Installation temperature range: 32°F to 122°F (0°C to 50°C)
- Operating temperature range: -4°F to 140°F (-20°C to 60°C)
- Descending length cable markings enable easy identification of remaining cable which reduces installation time and cable scrap
- Cable supplied on a reel



Part Number	Part Description	Cable Color	Std. Pkg. Qty.	Std. Ctn. Qty.
Riser				
PFR5504BU-UY	Category 5e, riser (CMR), 4-pair, F/UTP copper cable. Copper conductors are 24 AWG construction with polyethylene insulation. Conductors are twisted in pairs, surrounded by an overall polyester aluminum foil with a stranded copper drain wire and protected by a flame-retardant PVC jacket.	Blue	1000	20000
Riser				
PPF5504BU-UY	Category 5e, plenum (CMP), 4-pair, F/UTP copper cable. Copper conductors are 24 AWG construction with FEP insulation. Conductors are twisted in pairs, surrounded by an overall polyester aluminum foil with stranded copper drain wire and protected by a low smoke flame-retardant PVC jacket.	Blue	1000	20000

For other colors, replace BU (Blue) with WH (White), IG (International Gray), BL (Black), GR (Green), OR (Orange), RD (Red), VL (Violet), or YL (Yellow).
Order number of pieces required, in multiples of 5,000 feet.



cUL **us**  **Mini-Com® TX5e™ Shielded Jack Modules**

- Exceed requirements of ANSI/TIA-568-C.2 Category 5e, IEEE 802.3an-2006, and ISO 11801 Class D channel standards
- Exceed requirements of ANSI/TIA-568-C.2 Category 5e and IEC 61156-5 Category 5e component standards
- Meet requirements of IEEE 802.3af and IEEE 802.3at for PoE applications
- Each jack is 100% tested to ensure NEXT and RL performance and is individually serialized for traceability
- Utilize patent-pending enhanced Giga-TX™ Technology for jack terminations which optimizes performance by maintaining cable pair geometry and eliminating conductor untwist
- Fully grounded and bonded to patch panel when installed in Panduit All Metal Modular Patch Panel
- Contacts plated with 50 microinches of gold for superior performance
- No punchdown tool required; termination tool (EGJT) ensures conductors are fully terminated by utilizing a smooth forward motion without impact on critical internal components for maximum reliability
- Optional termination tool (TGJT) reduces termination time by 25%, ideal for high volume installations
- Can be re-terminated a minimum of twenty times
- Red termination cap designates Category 5e performance and provides positive strain relief; helps control cable bend radius and securely retains wires
- Terminate 4-pair, 22 – 26 AWG, 100 ohm, solid or stranded shielded twisted pair cable
- Universal termination cap is color-coded for T568A and T568B wiring schemes
- Integrated strain relief with wire cap provides 360° conductive path for grounding
- 0.187 in. tab provides conductive path for grounding individual jacks
- Accept 6 and 8-position modular plugs without damage
- Can be clearly identified with optional labels and icons
- Compatible with Mini-Com® Modular Patch Panels, Faceplates, and Surface Mount Boxes
- Optional RJ45 blockout device blocks out unauthorized access to jack modules and potentially harmful foreign objects, saving time and money associated with data security breaches, network downtime, repair, and hardware replacement
- Optional dust cap keeps out dust and debris while not in use



CJS5E88TGY



CJSK5E88TGBL

Part Number	Part Description	No. of Module Spaces	Cable Color	Std. Pkg. Qty.	Std. Ctn. Qty.
Jack Module					
CJS5E88TGY	Category 5e, RJ45, 8-position, 8-wire universal shielded black module with integrated shield.	1	Black	1	50
Keyed Jack Module					
CJSK5E88TGBL*	Keyed, Category 5e, RJ45, 8-position, 8-wire universal shielded black module with integrated shield.	1	Black	1	50

*For standard colors other than Black, replace suffix BL (Black) with BU (Blue), RD (Red), YL (Yellow), GR (Green), OR (Orange), VL (Violet), or GY (Gray), each color representing a different keyed configuration. Termination tools available on page B.97.

Shield grounding requires proper installation of shielded jack module and the use of shielded patch cords and cable.

All metal modular patch panels available on page B.73.

For grounding shielded modules not installed in a shielded patch panel, see the shielded jack module grounding kit, CJSJK-XY on page M.23.

RJ45 blockout device available on page B.92.

Dust cap available on page B.97.

Contact customer service for bulk packaged jack modules.

  **Mini-Com® TX5e™ Shielded Jack Modules (continued)**

Keyed Geometry



Black Key



Red Key



Green Key



Yellow Key



Orange Key



Blue Key



Violet Key



Intl. Gray Key



Black Key



Red Key



Green Key



Yellow Key



Orange Key



Blue Key



Violet Key



Intl. Gray Key

Component Labels for Mini-Com® TX5e™ Shielded Jack Modules



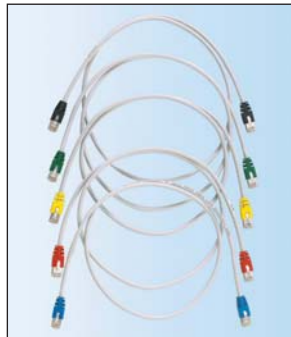
Suggested Label Solutions for TIA/EIA-606-A Compliance				
Module Part Number	Laser/Ink Jet Desktop Printer Label	TDP43ME Thermal Transfer Desktop Printer Label	PanTher™ LS8E Hand-Held Printer Label	Cougar™ LS9 Hand-Held Printer Label
All TX5e™ Shielded Jack Modules	C138X019FJJ	C138X019YPT	C138X019FJC	T019X000FJC-BK

For complete labeling solutions and product information, reference charts on pages O.1 – O.25.



cUL us TX5e™ Shielded Patch Cords

- Exceed ANSI/TIA-568-C.2 Category 5e and ISO 11801 Class D standards
- Meet requirements of IEEE 802.3af and IEEE 802.3at for PoE applications
- Color-coded, keyed modular plugs mechanically and visually distinguish connections to prevent unintentional mating with unlike keyed or non-keyed jack modules accommodating more discrete networks
- Each patch cord is 100% performance tested to component limits and wired T568A
- Constructed of Category 5e, 26 AWG, STP stranded, LSZH/CM cable and Pan-Plug™ Shielded Modular Plugs; plug contacts plated with 50 microinches of gold for superior performance
- Plug meets all applicable ANSI/TIA/EIA-968-A requirements and exceeds IEC 60603-7 specifications
- Patented tangle-free latch prevents snags and provides easy release, saving time on frequent moves, adds, and changes
- Labels on patch cords provide identification of performance level, length, and quality control number
- Optional patch cord color bands snap on and off individual patch cables offering endless color-coding options
- Optional RJ45 plug lock-in device blocks unauthorized removal of cable, IP phone, other networking equipment, or critical connection



Part Number	Part Description	Length (m)	Boot Color	Cable Color	Std. Pkg. Qty.	Std. Ctn. Qty.
Patch Cords						
STPCH1MBBL‡	Category 5e, shielded patch cord with Pan-Plug® Shielded Modular Plugs on each end.	1	Black	International Gray	1	10

Part Number	Part Description	Length (Ft.)	Boot Color	Cable Color	Std. Pkg. Qty.	Std. Ctn. Qty.
Keyed Patch Cords						
STPKCH3BL	Keyed, Category 5e, shielded patch cord with Pan-Plug® Keyed Shielded Modular Plug on one end and Pan-Plug® Non-Keyed Shielded Modular Plug on the other end.	3	Black	International Gray	1	10

‡For lengths 1 to 10 meters (increments of one meter) and 0.5, 1.5, 2.5, 15, 20, 25, 30, 35, 40 meters change the length designation in the part number to the desired length. For boot colors other than Black, replace suffix BL (Black) with BU (Blue), GR (Green), RD (Red), or YL (Yellow). For example, the part number for a 15 meter patch cord with blue boots is STPCH15MBBU.

*For lengths other than 3 feet (5, 7, 10, 14 feet) change the length designation in the part number to the desired length. For boot colors other than Black, replace suffix BL (Black) with BU (Blue), RD (Red), YL (Yellow), GR (Green), or OR (Orange), each color representing a different keyed configuration. Contact customer service for universal reference patch cords.

Patch cord color bands available on page B.96.
RJ45 plug lock-in device available on page B.94.

Labels for TX5e™ Shielded Patch Cords



Suggested Label Solutions for TIA/EIA-606-A Compliance				
Patch Cord Part Number	Laser/Ink Jet Desktop Printer Label	TDP43ME Thermal Transfer Desktop Printer Label	PanTher™ LS8E Hand-Held Printer Label	Cougar™ LS9 Hand-Held Printer Label
All Patch Cords	S100X150YAJ	S100X150VATY	S100X150VAC	T100X000CBC-BK

For complete labeling solutions and product information, reference charts on pages O.1 – O.25.

Pan-Plug® Category 5e Shielded Modular Plug

- Meets all applicable ANSI/TIA-968-A requirements and exceeds IEC 60603-7 specifications
- Meet requirements of IEEE 802.3af and IEEE 802.3at for PoE applications
- Used in STPCH series patch cords providing Category 5e performance
- Patented tangle-free latch prevents snags and provides easy release saving time on frequent moves, adds, and changes
- Simplified termination requires no loading bar, guide ramp facilitates easy conductor insertion and termination
- Contacts plated with 50 microinches of gold for superior performance
- Shielded plug housing provides conductive path for grounding
- Terminates 24 – 26 AWG 100 ohm stranded or solid shielded cable with max. conductor insulation diameter of 0.040 in.



Part Number	Part Description	Std. Pkg. Qty.	Std. Ctn. Qty.
MPS588-C	8-position, 8-wire shielded modular plug.	100	1000

To ensure optimal performance, Panduit recommends use with other Panduit Category 5e components. MPT5-8AS crimp tool required for termination, available on page B.98.



TX5500™ Category 5e 25-Pair UTP Copper Cable

- Exceeds requirements of ANSI/TIA-568-C.2 Category 5e and ISO 11801 2nd Edition Class D channel standards
- Exceeds requirements of ANSI/TIA-568-C.2 and IEC 61156-5 Category 5e component standards
- Meets requirements of IEEE 802.3af and 802.3at for PoE applications
- Cable diameter: Riser 0.511 in. (12.9mm) nominal, Plenum 0.455 in. (11.6mm) nominal
- Installation temperature range: 32°F to 122°F (0°C to 50°C)
- Operating temperature range: -4°F to 167°F (-20°C to 75°C)
- Descending length cable markings enable easy identification of remaining cable which reduces installation time and cable scrap
- Cable supplied on a reel



PUR5525IG-UY

Part Number	Part Description	Color‡	Std. Pkg. Qty. (Ft.)	Std. Ctn. Qty. (Ft.)
Riser				
PUR5525IG-UY	Category 5e riser (CMR) 25-pair UTP copper cable. Copper conductors are 24 AWG construction with HDPE insulation. Conductors are twisted in pairs and placed in a flame-retardant PVC jacket.	International Gray	1000	3000
Plenum				
PUP5525IG-UY	Category 5e plenum (CMP) 25-pair UTP copper cable. Copper conductors are 24 AWG construction with FEP insulation. Conductors are twisted in pairs and placed in a low smoke, flame-retardant, fluoropolymer jacket.	International Gray	1000	3000

‡For standard colors other than IG (International Gray), replace IG with BU (Blue) or WH (White). Order number of pieces required, in multiples of Standard Carton Quantity (Pallet).

Labels for TX5500™ Category 5e 25-Pair UTP Copper Cable



Suggested Label Solutions for TIA/EIA-606-A Compliance				
Module Part Number	Laser/Ink Jet Desktop Printer Label	TDP43ME Thermal Transfer Desktop Printer Label	PanTher™ LS8E Hand-Held Printer Label	Cougar™ LS9 Hand-Held Printer Label
PUP5525IG-UY PUR5525IG-UY	S100X400YAJ	S100X400VATY	S100X400VAC	T100X000CBC-BK

For complete labeling solutions and product information, reference charts on pages O.1 – O.25.



UL LISTED Data-Patch™ 10/100BASE-T Patch Panels

- Category 5e rated in the channel when used with Category 5e 25-pair cable assemblies
- Consist of female telco 50 pin/25 pair connectors with hook and loop fasteners wired per RJ21 industry standard for backward compatibility
- Each port is wired for 10/100BASE-T Ethernet utilizing pins 1, 2 and 3, 6
- Does not require use of a punchdown tool
- Mount to standard EIA 19" rack or 23" racks with optional extender bracket
- Write-on areas for port and panel identification
- Optional label kits (DPLK24 and DPLK48) contain adhesive label holder and labels for easy port and panel identification
- Can be clearly identified with labels and icons



DP24584TV25Y



DP48584TV25Y

Part Number	Part Description	No. of Rack Spaces [^]	Std. Pkg. Qty.	Std. Ctn. Qty.
DP24584TV25Y	24-port, Category 5e, patch panel with 24 RJ45 ports wired to two RJ21 Telco connectors.	1	1	10
DP48584TV25Y	48-port, Category 5e, patch panel with 48 RJ45 ports wired to four RJ21 Telco connectors.	2	1	10

[^]One rack space = 1.75" (44.45mm).
M6 and #12-24 mounting screws included.
For use with Data-Patch™ 10/100BASE-T Cable Assemblies on page B.55.

Component Labels for Data-Patch™ 10/100BASE-T Patch Panels



Suggested Label Solutions for TIA/EIA-606-A Compliance

Patch Panel Part Number	Laser/Ink Jet Desktop Printer Label	TDP43ME Thermal Transfer Desktop Printer Label	PanTher™ LS8E Hand-Held Printer Label	Cougar™ LS9 Hand-Held Printer Label
DP24584TV25Y DP48584TV25Y	C379X030FJJ	C379X030YPT	C379X030FJC	T031X000FJC-BK

For complete labeling solutions and product information, reference charts on pages O.1 – O.25.

Data-Patch™ Category 5e RJ21 to RJ45 Patch Panel

- Designed to exceed ANSI/TIA-568-C.2 Category 5e and ISO 11801 2nd Edition Class D standards
- Consist of female telco 50-pin/25-pair connectors with hook and loop fasteners wired per RJ21 industry standard for backward compatibility
- Each RJ45 port is fully wired for 10/100/1000BASE-T Ethernet performance utilizing all 8 pins
- Does not require use of a punchdown tool
- Mounts to standard EIA 19" rack or 23" racks with optional extender bracket
- Write-on areas for port and panel identification
- Can be clearly identified with labels and icons
- Optional label kits (DPLK24 and DPLK48) contain adhesive label holder and labels for easy port and panel identification



DPA245E88TV25



DPA485E88TV25



DP245E88TV25



DP485E88TV25

Part Number	Part Description	No. of Rack Spaces [^]	Std. Pkg. Qty.	Std. Ctn. Qty.
-------------	------------------	---------------------------------	----------------	----------------

Data-Patch™ 10/100/1000BASE-T RJ21 to RJ45 Angled Patch Panels

DPA245E88TV25 <small>PATENTED</small>	24-port angled, Category 5e, RJ45, 8-pin, fully wired to 4-port RJ21 connector panel.	1	1	10
DPA485E88TV25	48-port angled, Category 5e, RJ45, 8-pin, fully wired to 8-port RJ21 connector panel.	2	1	10

Data-Patch™ 10/100/1000BASE-T RJ21 to RJ45 Flat Patch Panels

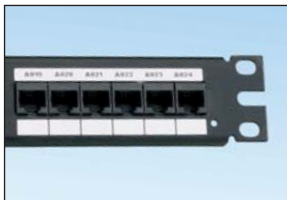
DP245E88TV25	24-port, Category 5e, RJ45, 8-pin, fully wired to 4-port RJ21 connector panel.	1	1	10
DP485E88TV25	48-port, Category 5e, RJ45, 8-pin, fully wired to 8-port RJ21 connector panel.	2	1	10

[^]One rack space = 1.75" (44.45mm).

M6 and #12-24 mounting screws included.

Data-Patch™ 10/100/1000BASE-T Cable Assemblies available on page B.55.

Component Labels for Data-Patch™ Category 5e RJ21 to RJ45 Patch Panel



Suggested Label Solutions for TIA/EIA-606-A Compliance

Part Number	Laser/Ink Jet Desktop Printer Label	TDP43ME Thermal Transfer Desktop Printer Label	PanTher™ LS8E Hand-Held Printer Label	Cougar™ LS9 Hand-Held Printer Label
DPA245E88TV25 DPA485E88TV25 DP245E88TV25 DP485E88TV25	C379X030FJJ	C379X030YPT	C379X030FJC	T031X000FJC-BK

For complete labeling solutions and product information, reference charts on pages O.1 – O.25.



Data-Patch™ 10/100/1000BASE-T Cable Assemblies

- Category 5e rated 25-pair connectorized cable assemblies are enhanced performance patch cords featuring 25-pair Category 5e solid cable with Category 5e, 25-pair RJ21 plugs on either end
- System also includes Category 5e rated 25-pair hydra with Category 5e, 25-pair male connectors on one end and six Pan-Plug® Modular Plugs on the other end
- System also include Category 5e rated RJ21 to MRJ21 with Category 5e 25-pair male connector on one end and MRJ21 male connector on the other
- All cords are 100% tested for wiring sequence and continuity



UTPCH8**25Y

Part Number	Part Description	Length (Ft.)‡	Std. Pkg. Qty.	Std. Ctn. Qty.
UTPCH8SR25Y	RJ21 plug to RJ21 plug, straight, 110° right orientation.	8	1	10
UTPCH8SL25Y	RJ21 plug to RJ21 plug, straight, 110° left orientation.	8	1	10
UTPCH8L25Y	RJ21 plug to RJ21 plug, both 110° left orientation.	8	1	10
UTPCH8R25Y	RJ21 plug to RJ21 plug, both 110° right orientation.	8	1	10
UTPCH8LR25Y	RJ21 plug to RJ21 plug, 110° left, 110° right orientation.	8	1	10
UTPCH86PP25	RJ21 plug to six Pan-Plug® Modular Plugs, straight.	8	1	10
UTPCH8SMRJ25	MRJ21 male connector to RJ21 connector, straight.	8	1	10

‡For lengths 6, 10, 15 and 20 replace 8 in part number for desired length. For example, the part number for a 15 foot straight and right 25-pair connectorized cable assembly is UTPCH15SR25Y.

Labels for Data-Patch™ 10/100/1000BASE-T Cable Assemblies



Suggested Label Solutions for TIA/EIA 606-A Compliance				
Cable Assemblies Part Number	Laser/Ink Jet Desktop Printer Label	TDP43ME Thermal Transfer Desktop Printer Label	PanTher™ LS8E Hand-Held Printer Label	Cougar™ LS9 Hand-Held Printer Label
All UTPCH8 Cable Assemblies on this page	S100X400YAJ	S100X400VATY	S100X400VAC	T100X000CBC-BK

For complete labeling solutions and product information, reference charts on pages O.1 – O.25.



RJ45 – HD68 and RJ45 – VHD68 SCSI Angled Patch Panel and Kits

- Used for console management of selected switching equipment
- Each port 100% electrically tested
- Angled patch panel is available individually or kitted with cable assemblies
- Female 68-pin sockets on panel meet ANSI T 10.1302D SCSI Parallel Interface-3 (SPI-3) standard
- Mount to standard EIA 19" rack or 23" racks with optional extender bracket
- Pre-printed numbers above each port for easy identification

**TPK1A32R88S68Y**

Part Number	Part Description	No. of Rack Spaces [^]	Std. Pkg. Qty.	Std. Ctn. Qty.
TPA32R88S68Y	32-port angled patch panel with 32 RJ45 ports wired to four 68-pin SCSI connectors.	1	1	10
TPK1A32R88S68Y	32-port angled patch panel with 32 RJ45 ports wired to four 68-pin SCSI connectors kitted with four cable assemblies each 3 ft. long with 68-pin DB68 male plugs on both ends.	1	1	10
TPK2A32R88S68	32-port angled patch panel with 32 RJ45 ports wired to four 68 pin SCSI connectors kitted with four cable assemblies each 6 ft. long with 68-pin DB68 male plug on one end, and 68-pin VHD68 male plug on the other.	1	1	10

[^]One rack space = 1.75" (44.45mm).
M6 and #12 – 24 mounting screws included.

Component Labels for RJ45 – HD68 and RJ45 – VHD68 SCSI Angled Patch Panel and Kits



Suggested Label Solutions for TIA/EIA-606-A Compliance

Patch Panel Part Number	Laser/Ink Jet Desktop Printer Label	TDP43ME Thermal Transfer Desktop Printer Label	PanTher™ LS8E Hand-Held Printer Label	Cougar™ LS9 Hand-Held Printer Label
TPA32R88S68 TPK1A32R88S68	C379X030FJJ	C379X030YPT	C379X030FJC	T031X000FJC-BK

For complete labeling solutions and product information, reference charts on pages O.1 – O.25.



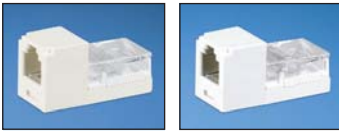
Mini-Com® Mini-Jack™ Category 3 UTP Jack Modules

- Patented lead frame termination style ensures twists are maintained to within 1/2"
- No punchdown tool required, optional termination tool (CJT-X) ensures conductors are fully terminated
- Termination cap provides excellent strain relief; helps control cable bend radius and securely retains wires
- Clear, removable termination cap provides easy troubleshooting
- Terminate 4-pair 24 and 22 AWG 100 ohm solid unshielded twisted pair cable
- Accept 6 and 8-position modular plugs without damage
- White colored module base designates Category 3 performance
- Can be clearly identified with optional labels and icons
- Compatible with Mini-Com® Modular Patch Panels, Faceplates, and Surface Mount Boxes
- Optional RJ45 blockout device blocks out unauthorized access to jack modules and potentially harmful foreign objects, saving time and money associated with data security breaches, network downtime, repair, and hardware replacement
- Optional dust cap keeps out dust and debris while not in use



CJ88**Y

CJ66U**Y



CJ66**Y

CJ64**Y

Part Number	Part Description	No. of Module Spaces	Color‡	Std. Pkg. Qty.	Std. Ctn. Qty.
CJ88IWY	Category 3, 8-position, 8-wire universal module.	1	Off White	1	50
CJ66UIWY	Category 3, 6-position, 6-wire USOC module.	1	Off White	1	50
CJ66IWY	Category 3, 6-position, 6-wire universal module.	1	Off White	1	50
CJ64IWY	Category 3, 6-position, 4-wire universal module.	1	Off White	1	50

‡For standard colors other than Off White, replace suffix IW (Off White) with EI (Electric Ivory), WH (White), IG (International Gray), YL (Yellow), or BL (Black).
Termination tools available on page B.97.

Component Labels for Mini-Com® Mini-Jack™ Category 3 UTP Jack Modules



Suggested Label Solutions for TIA/EIA-606-A Compliance

Module Part Number	Laser/Ink Jet Desktop Printer Label	TDP43ME Thermal Transfer Desktop Printer Label	PanTher™ LS8E Hand-Held Printer Label	Cougar™ LS9 Hand-Held Printer Label
All UTP Category 3 Jack Modules	C138X019FJJ	C138X019YPT	C138X019FJC	T019X000FJC-BK

For complete labeling solutions and product information, reference charts on pages O.1 – O.25.



Mini-Com[®] BAS Connector Module

- Standard field bus connector terminates up to three 18 – 22 AWG connectors or shielded/unshielded cable
- No punchdown tool required, terminates with screwdriver
- Common declaration point for BAS networks and low voltage power for building systems
- Compatible with Mini-Com[®] Modular Patch Panels, Faceplates, and Surface Mount Boxes



Part Number	Part Description	No. of Module Spaces	Color‡	Std. Pkg. Qty.	Std. Ctn. Qty.
CMBRS485OR	Module supplied with 22 AWG min/18 AWG max connector.	2	Orange	1	10

‡For other colors replace suffix OR (Orange) with BL (Black), BU (Blue), GR (Green), RD (Red), or YL (Yellow).

Mini-Com[®] Blank Module

- Secures opening to prevent tampering
- Compatible with Mini-Com[®] Modular Patch Panels, Faceplates, and Surface Mount Boxes



Part Number	Part Description	No. of Module Spaces	Color‡	Std. Pkg. Qty.	Std. Ctn. Qty.
CMBIW-X	1-position, reserves space for future use.	1	Off White	10	50

‡For other colors replace suffix IW (Off White) with EI (Electric Ivory), WH (White), IG (International Gray), or BL (Black).

Mini-Com[®] F-Type Module

- Typical use in CATV applications
- Accepts RG-6 and RG-59 coaxial cable
- Compatible with Mini-Com[®] Modular Patch Panels, Faceplates, and Surface Mount Boxes



Part Number	Part Description	No. of Module Spaces	Color‡	Std. Pkg. Qty.	Std. Ctn. Qty.
CMFIW	Module supplied with 75 ohm industry standard F-type coupler.	1	Off White	1	10

‡For other colors replace suffix IW (Off White) with EI (Electric Ivory), WH (White), IG (International Gray), or BL (Black).



Mini-Com® Self-Terminating F-Type Module

- Eliminates need for termination cap on connector
- Automatically puts 75 ohm load on cable run when cable is disconnected
- Reduces noise and interference on the line
- Compatible with Mini-Com® Modular Patch Panels, Faceplates, and Surface Mount Boxes
- Accepts RG-6 and RG-59 coaxial cable
- Rated 2GHz



Part Number	Part Description	No. of Module Spaces	Color‡	Std. Pkg. Qty.	Std. Ctn. Qty.
CMFSRIWY	Module supplied with 75 ohm self-terminating F-type coupler.	1	Off White	1	10

‡For other colors replace suffix IW (Off White) with EI (Electric Ivory), WH (White), IG (International Gray), or BL (Black).

Mini-Com® 15-Pin High-Density D-Subminiature Module

- Field terminable module features 15-pin screw terminal
- Dual module configuration allows it to be installed in Mini-Com® Faceplates (plastic and stainless steel)
- SVGA compatible
- Compatible with select Mini-Com® Modular Patch Panels, Faceplates, and Surface Mount Boxes



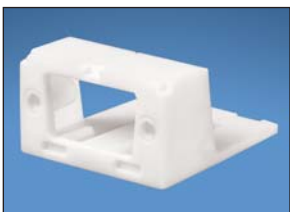
Part Number	Part Description	No. of Module Spaces	Color‡	Std. Pkg. Qty.	Std. Ctn. Qty.
CMD15HDIWY	2-position module supplied with one 15-pin DB connector mounted to a printed circuit board; terminates on site.	2	Off White	1	10

‡For other colors replace suffix IW (Off White) with EI (Electric Ivory), WH (White), IG (International Gray), or BL (Black).



Mini-Com® Module Base for D-Subminiature Connectors

- Accepts 9-pin or 15-pin high-density connector, male or female, solder or crimp type (connector not included)
- Compatible with select Mini-Com® Modular Patch Panels, Faceplates, and Surface Mount Boxes



Part Number	Part Description	No. of Module Spaces	Color‡	Std. Pkg. Qty.	Std. Ctn. Qty.
CMDBIW-X	2-position module base which accepts 9-pin and 15-pin high density D-subminiature connectors.	2	Off White	10	100

‡For other colors replace suffix IW (Off White) with EI (Electric Ivory), WH (White), IG (International Gray), or BL (Black).



D-Subminiature Inserts

- Used in audio and video applications
- Compatible with classic and executive faceplate frames



CHD9CIWY



CHD15HDCIWY



CHD15HDSCIWY

Part Number	Part Description	Color‡	Std. Pkg. Qty.	Std. Ctn. Qty.
CHD9CIWY	1/3 insert with 9-pin female to female coupler.	Off White	1	10
CHD15HDCIWY	1/3 insert with 15-pin high density female to female coupler; SVGA capable.	Off White	1	10
CHD15HDSCIWY	1/3 insert with one 15-pin DB connector mounted to a printed circuit board; terminates on site; SVGA capable.	Off White	1	10

‡For other colors, replace suffix IW (Off White) with EI (Electric Ivory), WH (White), IG (International Gray), or BL (Black).

Compatible with Classic and Executive Faceplate Frames on page G.14.

Component Labels for Mini-Com® D-Subminiature Inserts



Suggested Label Solutions for TIA/EIA-606-A Compliance

Faceplate Part Number	Laser/Ink Jet Desktop Printer Label	TDP43ME Thermal Transfer Desktop Printer Label	PanTher™ LS8E Hand-Held Printer Label	Cougar™ LS9 Hand-Held Printer Label
CHD9C**Y	C125X030FJJ	C125X030YPT	C125X030FJC	T031X000FJC-BK
CHD15HDC**Y				
CHD15HDSC**Y				

For complete labeling solutions and product information, reference charts on pages O.1 – O.25.

RCA 1/3 Inserts

- Used in audio and video applications

- Compatible with classic and executive faceplate frames



CHR3RGBIW



CHR3WYRIW

Part Number	Part Description	Color‡	Std. Pkg. Qty.	Std. Ctn. Qty.
CHR3RGBIW	1/3 insert with three RCA pass-through couplers. RCA insert colors are red, green, and blue. R,G,B component video.	Off White	1	10
CHR3WYRIW	1/3 insert with three RCA pass-through couplers. RCA insert colors are white, yellow, and red. Composite video and left and right stereo.	Off White	1	10

‡ For other colors, replace suffix IW (Off White) with EI (Electric Ivory), WH (White), or IG (International Gray). Compatible with Classic and Executive Faceplate Frames on page G.14.



Mini-Com® S-Video Punchdown Module

- Terminates 24 and 22 AWG solid or stranded conductors
- Utilizes Category 5e unshielded twisted pair or higher network cable facilitating a common, easy, and cost effective cabling installation; only four of the eight network cable conductors need to be terminated per cable
- Includes wire retention cap
- Compatible with Mini-Com® Modular Patch Panels, Faceplates, and Surface Mount Boxes



Part Number	Part Description	No. of Module Spaces	Color‡	Std. Pkg. Qty.	Std. Ctn. Qty.
CJSVIW	Module supplied with one S-Video connector.	1	Off White	1	10

‡For other colors replace suffix IW (Off White) with EI (Electric Ivory), WH (White), IG (International Gray), or BL (Black).

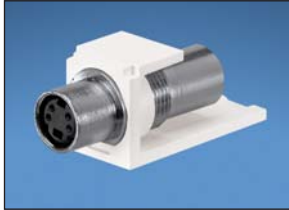
Punchdown termination tool available on page B.91.

Optional punchdown base (AVPDB), available on page B.97.



UL LISTED SP Mini-Com® S-Video Pass-Through Module

- Supplied with one 4-pin mini DIN coupler
- Compatible with Mini-Com® Modular Patch Panels, Faceplates, and Surface Mount Boxes



Part Number	Part Description	No. of Module Spaces	Color‡	Std. Pkg. Qty.	Std. Ctn. Qty.
CMSVCIWY	Module supplied with one S-video pass-through coupler.	1	Off White	1	10

‡For other colors replace suffix IW (Off White) with EI (Electric Ivory), WH (White), IG (International Gray), or BL (Black).

UL LISTED SP Mini-Com® RCA 110 Punchdown Modules

- Terminate 24 and 22 AWG solid or stranded conductors
- Utilize Category 5e unshielded twisted pair or higher network cable facilitating a common, easy, and cost effective cabling installation; only two of the eight network cable conductors need to be terminated per cable
- Include wire retention cap
- Compatible with Mini-Com® Modular Patch Panels, Faceplates, and Surface Mount Boxes



CJRY

Part Number	Part Description	No. of Module Spaces	Insert Color	Color‡	Std. Pkg. Qty.	Std. Ctn. Qty.
CJRYIW	Module supplied with one RCA connector with yellow insert.	1	Yellow	Off White	1	10
CJRRIW	Module supplied with one RCA connector with red insert.	1	Red	Off White	1	10
CJRWIW	Module supplied with one RCA connector with white insert.	1	White	Off White	1	10

‡For other colors replace suffix IW (Off White) with EI (Electric Ivory), WH (White), IG (International Gray), or BL (Black).

Punchdown termination tool available on page B.91.
Optional punchdown base (AVPDB), available on page B.97.

UL LISTED SP Mini-Com® RCA Pass-Through Modules

- Supplied with one RCA coupler
- Compatible with Mini-Com® Modular Patch Panels, Faceplates, and Surface Mount Boxes



CMRPR

Part Number	Part Description	No. of Module Spaces	Color‡	Std. Pkg. Qty.	Std. Ctn. Qty.
CMRPRIW	Module supplied with one RCA pass-through coupler with red insert.	1	Off White	1	10
CMRPIW	Module supplied with one RCA pass-through coupler with yellow insert.	1	Off White	1	10
CMRPWIW	Module supplied with one RCA pass-through coupler with white insert.	1	Off White	1	10
CMRPBIW	Module supplied with one RCA pass-through coupler with blue insert.	1	Off White	1	10
CMRPGIW	Module supplied with one RCA pass-through coupler with green insert.	1	Off White	1	10

‡For other colors replace suffix IW (Off White) with EI (Electric Ivory), WH (White), IG (International Gray), or BL (Black).

Mini-Com® 3.5mm Stereo Connector and Coupler Modules

- Supplied with one solder-type connector or coupler
- Accept male plug found on typical stereo headsets
- Solder-type connector accepts 22 AWG stereo wire or smaller
- Insulation resistance exceeds 100 milli-ohms at DC 500V
- Rated for DC 12V., 1A
- Compatible with Mini-Com® Modular Patch Panels, Faceplates, and Surface Mount Boxes



CM35MSS

Part Number	Part Description	No. of Module Spaces	Color‡	Std. Pkg. Qty.	Std. Ctn. Qty.
CM35MSSCIWY	3.5mm stereo coupler module.	1	Off White	1	10
CM35MSSSIW	Module supplied with one 3.5mm (1/8") stereo headset solder-type connector.	1	Off White	1	10

‡For other colors replace suffix IW (Off White) with EI (Electric Ivory), WH (White), IG (International Gray), or BL (Black).

Mini-Com® 5-Way Binding Post Modules

- Allow for easy installation of speaker wires, along with the ability to reconfigure speaker locations with greater ease
- Accept a variety of termination ends, including bare speaker wire (10 – 12 AWG) and banana plugs
- Gold plated and large metal contact area facilitates improved signal transmission
- Red or black stripe around collar of binding post clearly designates speaker connection
- Compatible with Mini-Com® Modular Patch Panels, Faceplates, and Surface Mount Boxes



CMBPBY

Part Number	Part Description	No. of Module Spaces	Color‡	Std. Pkg. Qty.	Std. Ctn. Qty.
CMBPBIWY	Module supplied with one 5-way binding post with black stripe.	1	Off White	1	10
CMBPRIWY	Module supplied with one 5-way binding post with red stripe.	1	Off White	1	10

‡For other colors, replace suffix IW (Off White) with EI (Electric Ivory) or WH (White).



Mini-Com® BNC Coax Coupler Modules

- Accept BNC plugs
- Available in 50 and 75 ohm versions

- Compatible with Mini-Com® Modular Patch Panels, Faceplates, and Surface Mount Boxes
- Accept RG-6 and RG-59 coaxial cable



CMBA75IWY

Part Number	Part Description	No. of Module Spaces	Color‡	Std. Pkg. Qty.	Std. Ctn. Qty.
CMBA75IWY	Module supplied with 75 ohm industry standard BNC coupler.	1	Off White	1	10
CMBAIWY	Module supplied with 50 ohm industry standard BNC coupler.	1	Off White	1	10

‡For other colors replace suffix IW (Off White) with EI (Electric Ivory), WH (White), IG (International Gray), or BL (Black).

Mini-Com® HDMI Coupler

- Delivers audio and video signals in digital format
- Supports Category 1 (standard) and Category 2 (high speed) HDMI cable
- Backwards compatible

- Compatible with select Mini-Com® Modular Patch Panels, Faceplates, and Surface Mount Boxes
- Length limitation determined by quality of the cable and type of device installed. Twinax cable recommended.



CMHDMIW

Part Number	Part Description	No. of Module Spaces	Color*	Std. Pkg. Qty.	Std. Ctn. Qty.
CMHDMIW	HDMI 1.3 Type A female to female Category 2 coupler module.	2	Off White	1	10

*For other colors replace suffix IW (Off White) with EI (Electric Ivory), WH (White), IG (International Gray), or BL (Black).

Mini-Com® USB Coupler

- Interface for transmitting data between devices such as scanners, digital cameras, printers, etc.
- Supports cable lengths up to 15 feet between devices

- Accepts USB 2.0 Patch Cords and is backwards compatible with USB 1.1 Patch Cords
- Compatible with all Mini-Com® Faceplates, Patch Panels and select Surface Mount Boxes



CMUSBAIW

Part Number	Part Description	No. of Module Spaces	Color*	Std. Pkg. Qty.	Std. Ctn. Qty.
CMUSBAIW	USB 2.0 female A to female A coupler module.	1	Off White	1	10

*For other colors replace suffix IW (Off White) with EI (Electric Ivory), WH (White), IG (International Gray), or BL (Black).





BNC Coupler Patch Panel

- Mounts to standard EIA 19" rack or 23" racks with optional extender bracket



CP48BNCBLY

Part Number	Part Description	No. of Rack Spaces [^]	Std. Pkg. Qty.	Std. Ctn. Qty.
CP48BNCBLY	48-port patch panel with 48 pre-installed 75 ohm BNC couplers.	1	1	10

[^]One rack space = 1.75" (44.45mm).
M6 and #12-24 mounting screws included.



Voice Patch Panel

- Consists of single female telco 50-pin/25-pair connector with hook and loop fasteners wired for common active voice equipment
- 24 RJ45 ports with pins 4 and 5 active in each port
- Telco connector with hook and loop fasteners accommodate 180, 110, or 90 degree patch cord connectors on back of patch panel
- Does not require use of a punchdown tool
- Mounts to standard EIA 19" rack or 23" racks with optional extender bracket
- Write-on areas available for port identification
- Can be clearly identified with optional labels and icons



VP24382TV25Y

Part Number	Part Description	No. of Rack Spaces [^]	Std. Pkg. Qty.	Std. Ctn. Qty.
VP24382TV25Y	24-port patch panel with 24 RJ45 ports wired to one RJ21 telco connector.	1	1	10

[^]One rack space = 1.75" (44.45mm).
M6 and #12-24 mounting screws included.

Component Labels for Voice Patch Panel



Suggested Label Solutions for TIA/EIA-606-A Compliance

Patch Panel Part Number	Laser/Ink Jet Desktop Printer Label	TDP43ME Thermal Transfer Desktop Printer Label	PanTher™ LS8E Hand-Held Printer Label	Cougar™ LS9 Hand-Held Printer Label
VP24382TV25Y	C379X030FJJ	C379X030YPT	C379X030FJC	T031X000FJC-BK

For complete labeling solutions and product information, reference charts on pages O.1 – O.25.





Mini-Com® Ultimate ID® Modular Patch Panels

- Ultimate ID® components are part of a complete system for identification designed to efficiently support TIA/EIA-606-A standard labeling requirements
- Angled patch panels facilitate proper bend radius control and minimize the need for horizontal cable managers
- Mount to standard EIA 19" rack or 23" racks with optional extender bracket
- Accept Mini-Com® Modules for UTP, fiber optic, and audio/video, which snap in and out for easy moves, adds, and changes

- Can be clearly identified with the PanTher™ LS8E or Cougar™ LS9 Hand-Held Thermal Transfer Printers
- Non-adhesive computer printable label sheets for desktop printers and write-on labels available
- Replacement label covers available
- Labels sold separately



UICMPPA24BLY

PATENTED

Part Number	Part Description	No. of Rack Spaces [^]	Labels Required	Std. Pkg. Qty.	Std. Ctn. Qty.
Mini-Com® Ultimate ID® Angled Modular Patch Panels					
UICMPPA24BLY	24-port angled patch panel with six UICPPL4BL Mini-Com® Ultimate ID® Faceplates.	1	Six 4-Port	1	10
UICMPPA48BLY	48-port angled patch panel with twelve UICPPL4BL Mini-Com® Ultimate ID® Faceplates.	2	Twelve 4-Port	1	10



UICMPPA48BLY

Mini-Com® Ultimate ID® Modular Patch Panels

UICMPP24BLY	24-port patch panel with six UICPPL4BL Mini-Com® Ultimate ID® Faceplates.	1	Six 4-Port	1	10
UICMPP48BLY	48-port patch panel with twelve UICPPL4BL Mini-Com® Ultimate ID® Faceplates.	2	Twelve 4-Port	1	10



UICMPP24BLY



UICMPP48BLY

[^]One rack space = 1.75" (44.45mm).
M6 and #12-24 mounting screws included.
Modular patch panels shown include labels installed; labels sold separately.



Mini-Com® Ultimate ID® Patch Panel Faceplates

- Ultimate ID® components are part of a complete system for identification designed to efficiently support TIA/EIA-606-A standard labeling requirements; reference page A.17 for a complete system overview
- Accept Mini-Com® Modules for UTP, fiber optic, and audio/video, which snap in and out for easy moves, adds, and changes
- Allow for custom configuration of Ultimate ID™ Patch Panels

- Supplied with label covers; labels sold separately
- Two label pocket faceplate allows port and panel identification; also permits patch cords to be routed without blocking port ID
- Can be clearly identified with the PanTher™ LS8E or Cougar™ LS9 Hand-Held Thermal Transfer Printers
- Non-adhesive computer printable label sheets for desktop printers and write-on labels available
- Replacement label covers available



UICPP2L4BL

Part Number	Part Description	Labels Required	Std. Pkg. Qty.	Std. Ctn. Qty.
UICPP2L4BL	Patch panel faceplate with two label pockets; accepts up to four Mini-Com® Modules.	Two 4-Port	1	10
UICPPL4BL	Patch panel faceplate with one label pocket; accepts up to four Mini-Com® Modules.	One 4-Port	1	10

Faceplates shown with labels installed, labels sold separately.
Ultimate ID® Labels can be found on pages O.11 and O.21.



UICPPL4BL





Mini-Com® Flush Mount Modular Patch Panels

- Rear mounted faceplates allow modules to be flush with front of patch panel
- Accept Mini-Com® Modules for UTP, fiber optic, and audio/video, which snap in and out for easy moves, adds, and changes
- Pre-printed numbers above each port for easy identification

- White write-on areas for port and/or panel identification
- Mount to standard EIA 19" racks or 23" racks with optional extender brackets
- Angled patch panels facilitate proper bend radius control and minimize the need for horizontal cable managers



CPPA24FMWBLY

PATENTED



CPPA48FMWBLY



CPP24FMWBLY

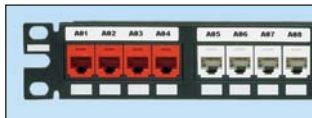


CPP48FMWBLY

Part Number	Part Description	No. of Rack Spaces [^]	Std. Pkg. Qty.	Std. Ctn. Qty.
Mini-Com® Angled Flush Mount Modular Patch Panels				
CPPA24FMWBLY	Angled 24-port flush mount patch panel supplied with rear mounted faceplates.	1	1	10
CPPA48FMWBLY	Angled 48-port flush mount patch panel supplied with rear mounted faceplates.	2	1	10
Mini-Com® Flush Mount Modular Patch Panels				
CPP24FMWBLY	24-port flush mount patch panel supplied with rear mounted faceplates.	1	1	10
CPP48FMWBLY	48-port flush mount patch panel supplied with rear mounted faceplates.	2	1	10

[^]One rack space = 1.75" (44.45mm).
M6 and #12-24 mounting screws included.

Component Labels for Mini-Com® Flush Mount Modular Patch Panels



Patch Panel Part Number	Suggested Label Solutions for TIA/EIA-606-A Compliance			
	Laser/Ink Jet Desktop Printer Label	TDP43ME Thermal Transfer Desktop Printer Label	PanTher™ LS8E Hand-Held Printer Label	Cougar™ LS9 Hand-Held Printer Label
All Flush Mount Patch Panels on this page	C252X030FJJ	C252X030YPT	C252X030FJC	T031X000FJC-BK

For complete labeling solutions and product information, reference charts on pages O.1 – O.25.





Mini-Com® High Density Modular Patch Panels

- Accept Mini-Com® Modules for UTP, fiber optic, and audio/video, which snap in and out for easy moves, adds, and changes
- Conserve valuable rack space, but may be limited to specific modules (UTP)
- Pre-printed numbers above each port for easy identification
- Mount to standard EIA 19" racks or 23" racks with optional extender brackets
- Angled patch panels facilitate proper bend radius control and minimize the need for horizontal cable managers
- Enhanced label version of 48-port high density patch panels only accept UTP modules



CPPA48HDWBLY



CPPA72FMWBLY



CPP48HDWBLY



CPP72FMWBLY



CPP48HDEWBL



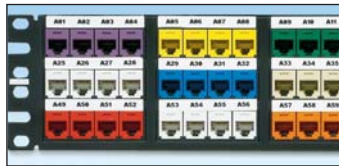
CPP48HDVNSWBL

Part Number	Part Description	No. of Rack Spaces [^]	Std. Pkg. Qty.	Std. Ctn. Qty.
Mini-Com® Angled High Density Modular Patch Panels				
CPPA48HDWBLY	48-port angled high density patch panel supplied with rear mounted faceplates (space not available for component labels).	1	1	10
CPPA72FMWBLY	72-port angled high density flush mount patch panel supplied with rear mounted faceplates.	2	1	10
CPPA48HDEWBL	48-port high density angled patch panel with enhanced labeling features and compatibility with Panduit hand-held printers. (Only accepts Mini-Com® Modules for UTP applications).	1	1	10
CPPA48HDVNSWBL	48-port high density angled patch panel with vertical numbering sequence from top to bottom across panel.	1	1	10

Mini-Com® High Density Modular Patch Panels				
CPP48HDWBLY	48-port high density patch panel supplied with rear mounted faceplates (space not available for component labels).	1	1	10
CPP72FMWBLY	72-port high density flush mount patch panel supplied with rear mounted faceplates.	2	1	10
CPP48HDEWBL	48-port high density patch panel with enhanced labeling features and compatibility with Panduit hand-held printers. (Only accepts Mini-Com® Modules for UTP applications).	1	1	10
CPP48HDVNSWBL	48-port high density patch panel with vertical numbering sequence from top to bottom across panel.	1	1	10

[^]One rack space = 1.75" (44.45mm).
M6 and #12-24 mounting screws included.

Component Labels for Mini-Com® High Density Modular Patch Panels



Suggested Label Solutions for TIA/EIA-606-A Compliance				
Patch Panel Part Number	Laser/Ink Jet Desktop Printer Label	TDP43ME Thermal Transfer Desktop Printer Label	PanTher™ LS8E Hand-Held Printer Label	Cougar™ LS9 Hand-Held Printer Label
CPPA72FMWBLY CPP72FMWBLY CPPA48HDEWBL CPP48HDEWBL	C261X030FJJ	C261X030YPT	C261X030FJC	T031X000FJC-BK

48-port high density patch panel layout does not allow space for component labels.
For complete labeling solutions and product information, reference charts on pages O.1 – O.25.





Mini-Com® Modular Faceplate Patch Panels

- Release snap feature on faceplate allows front access to installed modules
- Accept Mini-Com® Modules for UTP, fiber optic, and audio/video, which snap in and out for easy moves, adds, and changes
- Label versions available for easy port identification; replacement label/label covers available

- Mount to standard EIA 19" racks or 23" racks with optional extender brackets
- Angled patch panels facilitate proper bend radius control and minimize the need for horizontal cable managers



CPPLA24WBLY

PATENTED



CPPLA48WBLY



CPPL24WBLY



CPPL48WBLY



CPP24WBLY



CPP48WBLY



C4PPLK

Part Number	Part Description	No. of Rack Spaces [^]	Std. Pkg. Qty.	Std. Ctn. Qty.
-------------	------------------	---------------------------------	----------------	----------------

Mini-Com® Angled Modular Patch Panels with Labels

CPPLA24WBLY	24-port angled patch panel with labels, supplied with six factory installed CFFPL4 type front removable snap-in faceplates.	1	1	10
CPPLA48WBLY	48-port angled patch panel with labels, supplied with twelve factory installed CFFPL4 type front removable snap-in faceplates.	2	1	10

Mini-Com® Modular Patch Panels with Labels

CPPL24WBLY	24-port patch panel with labels, supplied with six factory installed CFFPL4 type front removable snap-in faceplates.	1	1	10
CPPL48WBLY	48-port patch panel with labels, supplied with twelve factory installed CFFPL4 type front removable snap-in faceplates.	2	1	10

Mini-Com® Modular Patch Panels

CPP24WBLY	24-port patch panel supplied with six factory installed CFFP4 type front removable snap-in faceplates.	1	1	10
CPP48WBLY	48-port patch panel supplied with twelve factory installed CFFP4 type front removable snap-in faceplates.	2	1	10

Replacement Labels for Mini-Com® Modular Patch Panels

C4PPLK	Replacement label/label cover kit for Mini-Com® Modular Patch Panels with Labels (CPPL24WBLY, CPPL48WBLY, CPPL24WRBLY, CPPL48WRBLY) and Mini-Com® Modular Furniture Faceplates with Labels (CFFPL4, CFFHSL4, CFFPEBSL4). Each kit contains six labels and six clear label covers per bag.	—	1	10
---------------	---	---	---	----

[^]One rack space = 1.75" (44.45mm).
M6 and #12-24 mounting screws included.

Component Labels for Mini-Com® Modular Faceplate Patch Panels



Patch Panel Part Number	Suggested Label Solutions for TIA/EIA-606-A Compliance			
	Laser/Ink Jet Desktop Printer Label	TDP43ME Thermal Transfer Desktop Printer Label	PanTher™ LS8E Hand-Held Printer Label	Cougar™ LS9 Hand-Held Printer Label
All Patch Panels on this Page	C261X035Y1J	C261X035Y1T	C261X035Y1C	T038X000FJC-BK‡

For complete labeling solutions and product information, reference charts on pages O.1 – O.25.

‡For non-adhesive labeling solution, do not remove liner from label.





Mini-Com® M6 Style Modular Faceplate Patch Panels

- Arrange modules in groups of six (M6)
- Allow front access to installed modules
- Accept Mini-Com® Modules for UTP, fiber optic, and audio/video, which snap in and out for easy moves, adds, and changes
- Include pre-printed numbered labels with writable surface on back when pre-numbered labels are not applicable
- Mount to standard EIA 19" racks or 23" racks with optional extender brackets



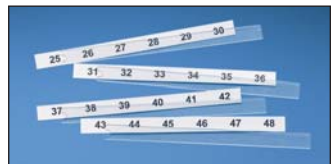
CPPL24M6BLY



CPPL48M6BLY



C6PPLK1-24



C6PPLK25-48

Part Number	Part Description	No. of Rack Spaces [^]	Std. Pkg. Qty.	Std. Ctn. Qty.
Mini-Com® M6 Style Modular Faceplate Patch Panels				
CPPL24M6BLY	24-port patch panel supplied with four factory installed CFPLM6BL snap-in faceplates.	1	1	10
CPPL48M6BLY	48-port patch panel supplied with eight factory installed CFPLM6BL snap-in faceplates.	2	1	10

Replacement Labels for Mini-Com® M6 Style Modular Faceplate Patch Panels

C6PPLK1-24	Replacement labels for Mini-Com® M6 Style Modular Faceplate Patch Panels with label/label covers (CPPL24M6BLY). Labels are pre-printed 1 – 24 on one side and write-on area on reverse side.	—	1	10
C6PPLK25-48	Replacement labels for Mini-Com® M6 Style Modular Faceplate Patch Panels with label/label covers (CPPL**M6BLY). Labels are pre-printed 25 – 48 on one side and write-on area on reverse side.	—	1	10

[^]One rack space = 1.75" (44.45mm).
M6 and #12-24 mounting screws included.

Component Labels for Mini-Com® M6 Style Modular Faceplate Patch Panels



Suggested Label Solutions for TIA/EIA-606-A Compliance

Patch Panel Part Number	Laser/Ink Jet Desktop Printer Label	TDP43ME Thermal Transfer Desktop Printer Label	PanTher™ LS8E Hand-Held Printer Label	Cougar™ LS9 Hand-Held Printer Label
CPPL24M6BLY CPPL48M6BLY	C390X030Y1J	C390X030Y1T	C390X030Y1C	T031X000FJC-BK‡

For complete labeling solutions and product information, reference charts on pages O.1 – O.25.

‡For non-adhesive labeling solution, do not remove liner from label.





Mini-Com® Recessed Modular Faceplate Patch Panels

- 3" recessed feature eliminates patch cord interference with cabinet doors and improves bend radius protection
- Release snap feature on faceplate allows front access to installed modules
- Accept Mini-Com® Modules for UTP, fiber optic, and audio/video, which snap in and out for easy moves, adds, and changes

- Labels included for easy port identification, replacement label/label covers available
- Mount to standard EIA 19" racks or 23" racks with optional extender brackets



CPPL24WRBLY



CPPL48WRBLY

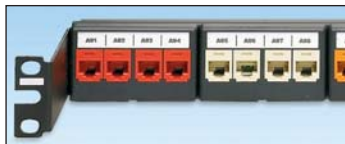


C4PPLK

Part Number	Part Description	No. of Rack Spaces [^]	Std. Pkg. Qty.	Std. Ctn. Qty.
CPPL24WRBLY	24-port recessed patch panel with labels, supplied with six factory installed CFFPL4 type front removable snap-in faceplates. Designed for use with racks and cabinets.	1	1	10
CPPL48WRBLY	48-port recessed patch panel with labels, supplied with twelve factory installed CFFPL4 type front removable snap-in faceplates. Designed for use with racks and cabinets.	2	1	10
C4PPLK	Replacement label/label cover kit for Mini-Com® Modular Patch Panels with Labels (CPPL24WRBLY, CPPL48WRBLY, CPPL24WRBLY, CPPL48WRBLY) and Mini-Com® Modular Furniture Faceplates with Labels (CFFPL4, CFPHSL4, CFFPEBSL4). Each kit contains six labels and six clear label covers per bag.	—	1	10

[^]One rack space = 1.75" (44.45mm).
M6 and #12-24 mounting screws included.

Component Labels for Mini-Com® Recessed Modular Faceplate Patch Panels



Patch Panel Part Number	Suggested Label Solutions for TIA/EIA-606-A Compliance			
	Laser/Ink Jet Desktop Printer Label	TDP43ME Thermal Transfer Desktop Printer Label	PanTher™ LS8E Hand-Held Printer Label	Cougar™ LS9 Hand-Held Printer Label
CPPL24WRBLY CPPL48WRBLY	C261X035Y1J	C261X035Y1T	C261X035Y1C	T038X000FJC-BK‡

For complete labeling solutions and product information, reference charts on pages O.1 – O.25.

‡For non-adhesive labeling solution, do not remove liner from label.





Mini-Com® 12-Port Modular Faceplate Patch Panels

- Release snap feature on faceplate allows simple front access for termination and accessibility to installed modules
- Mount directly onto wall
- Accept Mini-Com® Modules for UTP, fiber optic, and audio/video, which snap in and out for easy moves, adds, and changes
- Modular design for easy cabling revisions



CWPP12WBL



CPP12WBL



WB89D

Part Number	Part Description	Std. Pkg. Qty.	Std. Ctn. Qty.
CWPP12WBL	12-port patch panel supplied with three factory installed CFFP4 snap-in faceplates with integrated wall mount bracket.	1	10
CPP12WBL	12-port patch panel supplied with three factory installed CFFP4 snap-in faceplates. Mounts to standard 89D bracket (WB89D).	1	10
WB89D	Wall mount bracket accepts 12-port snap-in faceplate patch panel. Can also be used to mount industry standard 66 blocks.	1	10

Component Labels for Mini-Com® 12-Port Modular Faceplate Patch Panels



Suggested Label Solutions for TIA/EIA-606-A Compliance

Patch Panel Part Number	Laser/Ink Jet Desktop Printer Label	TDP43ME Thermal Transfer Desktop Printer Label	PanTher™ LS8E Hand-Held Printer Label	Cougar™ LS9 Hand-Held Printer Label
CWPP12WBL CPP12WBL	C261X030FJJ	C261X030YPT	C261X030FJC	T031X000FJC-BK

For complete labeling solutions and product information, reference charts on pages O.1 – O.25.





Mini-Com® All Metal Shielded Modular Patch Panels

- Accept Mini-Com® Modules for shielded applications
- Provide write-on areas for port identification
- Made of stainless steel
- CPT removal tool allows easy moves, adds, and changes of shielded jack modules
- Mount to standard TIA/EIA 19" rack or 23" racks with optional extender bracket



CP24BLY



CP48BLY



CP24WSBLY

PATENTED



CP48WSBLY



CPA24BLY



CPA48BLY

Part Number	Part Description	No. of Rack Spaces [^]	Std. Pkg. Qty.	Std. Ctn. Qty.
Mini-Com® All Metal Modular Patch Panels				
CP24BLY	24-port all metal modular patch panel.	1	1	10
CP48BLY	48-port all metal modular patch panel.	2	1	10
CP72BLY	72-port all metal modular patch panel. Rear cable management is required to prevent twisting.	2	1	10

Mini-Com® All Metal Modular Patch Panels with Strain Relief Bar

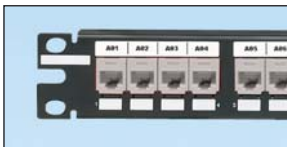
CP24WSBLY	24-port all metal modular patch panel with strain relief bar.	1	1	10
CP48WSBLY	48-port all metal modular patch panel with strain relief bar.	2	1	10

Mini-Com® All Metal Angled Modular Patch Panels

CPA24BLY	24-port angled all metal patch panel.	1	1	10
CPA48BLY	48-port angled all metal patch panel.	2	1	10
CPA72BLY	72-port angled all metal patch panel.	2	1	10

[^]One rack space = 1.75" (44.45mm).
M6 and #12-24 mounting screws included.
Each patch panel includes the CPT tool to ease removal of Mini-Com® Shielded Jack Modules.
Contact Customer Service for other available port options.
To bond the patch panel, see the patent pending StructuredGround™ Bonding Hardware Kits on page M.26.

Component Labels for Mini-Com® All Metal Shielded Modular Patch Panels



Suggested Labels Solutions for TIA/EIA-606-A Compliance				
Patch Panel Part Number	Laser/Ink Jet Desktop Printer Label	TDP43ME Thermal Transfer Desktop Printer Label	PanTher™ LS8E Hand-Held Printer Label	Cougar™ LS9 Hand-Held Printer Label
All Metal Shielded Modular Patch Panels on this page	C252X030FJJ	C252X030YPT	C252X030FJC	T031X000FJC-BK

For complete labeling solutions and product information, reference charts on pages O.1 – O.25.





Strain Relief Bar with Clips

- Mounts to the rear of standard EIA 19" racks behind each patch panel
- Supports 24 cables with hinged dual clips and provides bend radius protection
- Each adjustable clip can hold up to two cables; accommodates cable diameter range from 0.170" – 0.330" (4.3mm – 8.4mm)
- Provides superior aesthetics in cable management



PATENTED

Part Number	Part Description	No. of Rack Spaces [^]	Std. Pkg. Qty.	Std. Ctn. Qty.
SRBWCY	Strain relief bar with integrated adjustable clips; supports, manages, and provides bend radius protection for up to 24 cables in 1 RU.	1	1	10

[^]One rack space = 1.75" (44.45mm).



Strain Relief Bars for Patch Panels

- Mount to standard EIA 19" racks
- Ideal for standard density patch panels (24 ports per RU)
- Tak-Ty® Hook & Loop Cable Ties can be used for additional cable management



SRBM19BLY



SRBCT



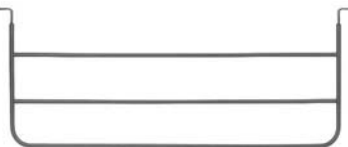
SRB19BLY



SRB19D5BL



SRB19D7BL



SRB19MDBL



SRBS19BL-XY



SRBBRKT

Part Number	Part Description	Std. Pkg. Qty.	Std. Ctn. Qty.
Strain Relief Bar/Manager			
SRBM19BLY	Strain relief bar with six Tak-Ty® Hook & Loop Cable Ties; supports, manages, and provides proper bend radius protection for up to 72 cables.	1	10
SRBCT	Strain relief bar includes 24 cable ties to secure cable to each individual slot for additional stability; supports, manages, and provides proper bend radius protection.	1	10

Strain Relief Bar/Manager

SRBM19BLY	Strain relief bar with six Tak-Ty® Hook & Loop Cable Ties; supports, manages, and provides proper bend radius protection for up to 72 cables.	1	10
SRBCT	Strain relief bar includes 24 cable ties to secure cable to each individual slot for additional stability; supports, manages, and provides proper bend radius protection.	1	10

Extended Strain Relief Bar

SRB19BLY	Strain relief bar extends 2" off the rack; supports, manages, and provides proper bend radius protection.	1	10
----------	---	---	----

Deep Strain Relief Bar

SRB19D5BL	Strain relief bar extends 5" off the rack; supports, manages, and provides proper bend radius protection.	1	10
SRB19D7BL	Strain relief bar extends 7" off the rack; supports, manages, and provides proper bend radius protection. Ideal for use with Category 6A copper cabling installations.	1	10
SRB19MDBL	Strain relief multi-depth bar extends 7" off the rack; supports, manages, and provides proper bend radius protection. Ideal for use with Category 6A copper cabling installations.	1	10

Straight Strain Relief Bar

SRBS19BL-XY	Strain relief bar; supports, manages, and provides proper bend radius protection.	10	—
-------------	---	----	---

Strain Relief Bar Brackets

SRBBRKT	Quick release brackets for strain relief bars; convert conventional screw mounting to quick release mounting/removal.	1	10
---------	---	---	----

#12-24 mounting screws included.



Cross Connect Punchdown System

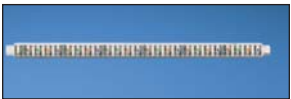
- Exceeds all ANSI/TIA-568-C.2 Category 6 and 5e standard requirements for voice and data applications
- Third party tested
- Multiple mounting configurations allow brackets to be mounted to back board or wall maximizing the use of valuable space
- Integrated mounting notches are compatible with standard cross connect mounting brackets providing maximum design flexibility for new and existing Category 6 and Category 5e installations
- Mounting bases accept 4 and 5-pair connecting blocks up to 50 or 300-pairs
- 4 or 5-pair terminal markings on connecting blocks speed installation by assisting in punchdown terminal identification
- Punchdown tool terminates 22 – 26 AWG UTP cable
- Optional deep trough cable distribution ring maintains proper bend radius control providing improved cable management in 300 pair mounting systems for both horizontal and vertical cable routing
- Optional label kit compatible with 50 and 300-pair Panduit Cross Connect Bases; enables port identification enabling compliance according to ANSI/TIA/EIA-606-A labeling standards



PXMT50



PXMT300



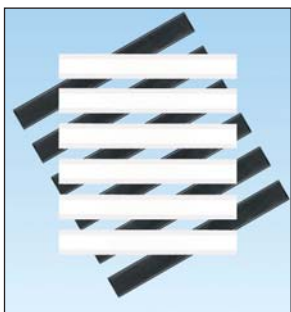
PXPCB4



PXPCB5



PXDR



PXLK-VI

Part Number	Part Description	Std. Pkg. Qty.	Std. Ctn. Qty.
Mounting Bases			
PXMT50	50-pair mounting base.	1	0
PXMT300	300-pair mounting base.	1	0
Connecting Blocks			
PXPCB4	4-pair cross connect block.	1	20
PXPCB5	5-pair cross connect block.	1	20
Accessories			
PXDR	Cross connect cable distribution ring.	1	10
PXLK-VI	Cross connect label kit includes six labels and six label holders. Compatible with 50 and 300-pair cross connect bases.	6	60

For termination, use tool PDT110, found on page B.91, with blade 10665000 (available from Fluke).



GP6™ PLUS Category 6 High Density Kits

- Exceed ANSI/TIA-568-C.2 Category 6 standard
- Ideal for use in cross-connects and consolidation point applications
- Provides pre-packaged components necessary for termination

- Kit includes required quantity of bases and 4-pair connecting blocks, label holders and labels
- Highly visible color-coded wiring slots ease wiring



GPKBW144Y



GPKBW432Y

Part Number	Part Description	Std. Pkg. Qty.	Std. Ctn. Qty.
GPKBW144Y	144-pair (36-port) Category 6 high-density punchdown field termination kit with legs.	1	10
GPKBW432Y	432-pair (108-port) Category 6 high-density punchdown field termination kit with legs.	1	10

Cable requirement: terminates most 22-26 AWG solid or stranded IWC wire with a 0.050" (1.27mm) max o.d., either PVC or plenum rated.

Termination tool available on page B.83.

To ensure optimal performance, Panduit recommends use with other Panduit Category 6 PLUS components. Can be clearly identified with labels found on page B.80.



GP6™ PLUS Category 6 Standard Density Kits

- Exceed ANSI/TIA-568-C.2 Category 6 standard
- Ideal for use in cross-connects and consolidation point applications
- Provide pre-packaged components necessary for termination

- Kit includes required quantity of bases and 4-pair connecting blocks, label holders and labels
- Highly visible color-coded wiring slots ease wiring



GPKBW24Y



GPKBW72Y

Part Number	Part Description	Std. Pkg. Qty.	Std. Ctn. Qty.
GPKBW24Y	96-pair (24-port) Category 6 punchdown base field termination kit with legs.	1	10
GPKBW72Y	288-pair (72-port) Category 6 punchdown base field termination kit with legs.	1	10

Cable requirement: terminates most 22 – 26 AWG solid or stranded IWC wire with a 0.050" (1.27mm) max o.d., either PVC or plenum rated.

Termination tool available on page B.83.

To ensure optimal performance, Panduit recommends use with other Panduit Category 6 PLUS components. Can be clearly identified with labels found on page B.80.



GP6™ PLUS Category 6 High Density Rack Mount Panel Kits

- Exceed ANSI/TIA-568-C.2 Category 6 standard
- Ideal for use in cross-connects and consolidation point applications
- Provide pre-packaged components necessary for termination
- Include required quantity of bases and 4-pair connecting blocks, label holders, and labels
- Highly visible color-coded wiring slots ease wiring
- Mount to standard TIA/EIA 19" racks



GPB2884R2Y



GPB2884R4WJY

Part Number	Part Description	No. of Rack Spaces [^]	Std. Pkg. Qty.	Std. Ctn. Qty.
GPB2884R2Y	Two 144-pair (36-port) Category 6 punchdown bases pre-mounted to a panel with 4-pair connector kit included.	2	1	10
GPB2884R4WJY	Two 144-pair (36-port) Category 6 punchdown bases and jumper troughs pre-mounted to a panel with 4-pair connector kit included.	4	1	10

[^]One rack space = 1.75" (44.45mm).
M6 and #12-24 mounting screws included.
Termination tool available on page B.83.
Cable requirement: terminates most 22 – 26 AWG solid or stranded IWC wire with a 0.050" (1.27mm) max o.d., either PVC or plenum rated.
To ensure optimal performance, Panduit recommends use with other Panduit Category 6 PLUS components.
Can be clearly identified with labels found on page B.80.



GP6™ PLUS Category 6 Standard Density Rack Mount Panel Kits

- Exceed ANSI/TIA-568-C.2 Category 6 standard
- Ideal for use in cross-connects and consolidation point applications
- Provide pre-packaged components necessary for termination
- Include required quantity of bases and 4-pair connecting blocks, label holders, and labels
- Highly visible color-coded wiring slots ease wiring
- Mount to standard TIA/EIA 19" racks



GPB484R2Y



GPB484R4WJY

Part Number	Part Description	No. of Rack Spaces [^]	Std. Pkg. Qty.	Std. Ctn. Qty.
GPB484R2Y	Two 96-pair (24-port) Category 6 punchdown bases pre-mounted to panel with 4-pair connector kit included.	2	1	10
GPB484R4WJY	Two 96-pair (24-port) Category 6 punchdown bases and jumper troughs pre-mounted to panel with 4-pair connector kit included.	4	1	10

[^]One rack space = 1.75" (44.45mm).
M6 and #12-24 mounting screws included.
Termination tool available on page B.83.
Cable requirement: terminates most 22 – 26 AWG solid or stranded IWC wire with a 0.050" (1.27mm) max o.d., either PVC or plenum rated.
To ensure optimal performance, Panduit recommends use with other Panduit Category 6 PLUS components.
Can be clearly identified with labels found on page B.80.





GP6™ PLUS Category 6 Connecting Blocks

- Exceed ANSI/TIA-568-C.2 Category 6 standard
- Available in 4 or 5-pair connection blocks
- Highly visible color-coded wiring slots ease wiring
- Can be terminated with single or multiple position punchdown tools
- Can be utilized with discrete wires or GP6™ PLUS Patch Cord Connector
- Constructed of UL 94V-0 high impact polycarbonate material
- Patented single piece robust construction
- Optional 4-pair retaining clip (GPRC4) provides additional conductor retention and minimizes errors during moves, adds, and changes



GPCB4-*Y



GPCB5-*Y

Part Number	Part Description	Std. Pkg. Qty.	Std. Ctn. Qty.
4-Pair Connecting Block			
GPCB4-XY	4-pair Category 6 punchdown connecting block.	10	1000
GPCB4-CY	4-pair Category 6 punchdown connecting block.	100	1000
5-Pair Connecting Block			
GPCB5-XY	5-pair Category 6 punchdown connecting block.	10	1000
GPCB5-CY	5-pair Category 6 punchdown connection block.	100	1000

Termination tool available on page B.83.

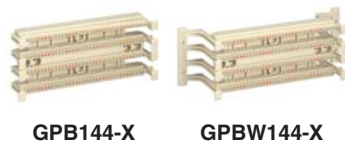
Cable requirement: terminates most 22 – 26 AWG solid or stranded IWC wire with a 0.050" (1.27mm) max o.d., either PVC or plenum rated.

To ensure optimal performance, Panduit recommends use with other Panduit Category 6 PLUS components.



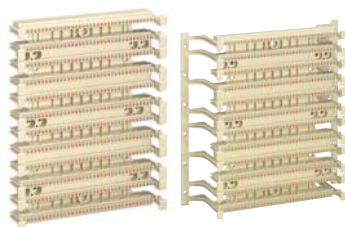
GP6™ PLUS Category 6 High Density Bases

- Exceed ANSI/TIA-568-C.2 Category 6 standard
- Ideal for use in cross-connects and consolidation point applications
- Highly visible color-coded wiring slots eases wiring
- Sturdy one-piece design
- Available with or without mounting legs for a variety of mounting options
- Multiple mounting holes available



GPB144-X

GPBW144-X



GPB432-X

GPBW432-X

Part Number	Part Description	Std. Pkg. Qty.
144-Pair (36-Port) Base		
GPB144-X	Positions and holds UTP wire for termination with Category 6 punchdown connecting blocks.	10
144-Pair (36-Port) Base – with Legs		
GPBW144-X	Positions and holds UTP wire for termination with Category 6 punchdown connecting blocks, includes mounting legs.	10
432-Pair (108-Port) Base		
GPB432-X	Positions and holds UTP wire for termination with Category 6 punchdown connecting blocks.	10
432-Pair (108-Port) Base – with Legs		
GPBW432-X	Positions and holds UTP wire for termination with Category 6 punchdown connecting blocks, includes mounting legs.	10

Termination tool available on page B.83.

For rack mount applications see page B.85

Cable requirement: terminates most 22 – 26 AWG solid or stranded IWC wire with a 0.050" (1.27mm) max o.d., either PVC or plenum rated.

To ensure optimal performance, Panduit recommends use with other Panduit Category 6 PLUS components.

Can be clearly identified with label holders and recommended labels shown on page B.80.





GP6™ PLUS Category 6 Standard Density Bases

- Exceed ANSI/TIA-568-C.2 Category 6 standard
- Ideal for use in cross-connects and consolidation point applications
- Highly visible color-coded wiring slots ease wiring
- Sturdy one-piece design
- Available with or without mounting legs for a variety of mounting options
- Multiple mounting holes available



GPB24-X

GPBW24-X



GPB72-X

GPBW72-X

Part Number	Part Description	Std. Pkg. Qty.
96-Pair (24-Port) Category 6 Punchdown Base		
GPB24-X	Positions and holds UTP wire for termination with Category 6 connecting blocks.	10
96-Pair (24-Port) Category 6 Punchdown Base – with Legs		
GPBW24-X	Positions and holds UTP wire for termination with Category 6 connecting blocks, includes mounting legs.	10
288-Pair (72-Port) Category 6 Punchdown Base		
GPB72-X	Positions and holds UTP wire for termination with Category 6 connecting blocks.	10
288-Pair (72-Port) Category 6 Punchdown Base – with Legs		
GPBW72-X	Positions and holds UTP wire for termination with Category 6 connecting blocks, includes mounting legs.	10

Termination tool available on page B.83.

For rack mount applications see page B.85.

Cable requirement: terminates most 22 – 26 AWG solid or stranded IWC wire with a 0.050" (1.27mm) max o.d., either PVC or plenum rated.

To ensure optimal performance, Panduit recommends use with other Panduit Category 6 components.

Can be clearly identified with label holders and recommended labels on page B.80.

GP6™ PLUS Standard Density Tower Kit

- Ideal for use in cross-connects, consolidation point, and wall mount applications
- Tower provides vertical feeder cable management
- Supplied with tower, bases, 4-pair connecting blocks, label and label holders



Part Number	Part Description	Std. Pkg. Qty.
GPKT724Y	288-pair (72-port) Category 6 punchdown standard density GP6™ PLUS Tower Kit.	1

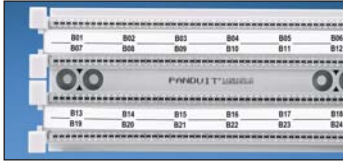
Termination tool available on page B.83.

Cable requirement: terminates most 22 – 26 AWG solid or stranded IWC wire with a 0.050" (1.27mm) max o.d., either PVC or plenum rated.

To ensure optimal performance, Panduit recommends use with other Panduit Category 6 components.



Component Labels for GP6™ PLUS Category 6 Standard Density Bases and GP6™ PLUS Standard Density Tower Kit



Suggested Label Solutions for TIA/EIA-606-A Compliance

Punchdown System Part Number	Laser/Ink Jet Desktop Printer Label	TDP43ME Thermal Transfer Desktop Printer Label	PanTher™ LS8E Hand-Held Printer Label	Cougar™ LS9 Hand-Held Printer Label
All GP Kits on pages C1.33 – C1.36	C788X050Y1J	C788X050Y1T	C788X050Y1C	T100X000VPC-BK‡

For complete labeling solutions and product information, reference charts on pages O.1 – O.25.
‡For non-adhesive labeling solution, do not remove liner from label.

UL LISTED SF CERTIFIED GP6™ PLUS Patch Connectors

- Patch into GP6™ PLUS Connecting Blocks
- Field terminable
- Cable clamp on cover facilitates easier wiring
- IDCs provide reliable, gas-tight connections
- Strain relief reduces stress on cable
- Contain two-piece, snap-together housing
- Polarized to prevent reverse installation to connector block
- Clear polycarbonate cover keeps conductors visible after termination
- Cover also provides proper wiring sequence



GPC5E1-XY



GPC5E2-XY

Part Number	Part Description	Std. Pkg. Qty.	Std. Ctn. Qty.
GPC5E1-XY	Terminates 1-pair 24 AWG solid or stranded cable.	10	100
GPC5E2-XY	Terminates 2-pair 24 AWG solid or stranded cable.	10	100

To ensure optimal performance, Panduit recommends use with other Panduit Category 6 components.



GP6™ PLUS Patch Cord Assemblies

- Exceed ANSI/TIA-568-C.2 Category 6 standard
- Factory assembled patch cord assembly

- Ideal for use in cross-connects and consolidation point applications with GP6™ PLUS Connector Blocks



GP6™ PLUS Patch Cord Assembly



GP6™ PLUS Patch Cord Assembly with RJ45 Pan-Plug Connector

Part Number	Part Description	Length (Ft.)	Std. Pkg. Qty.	Std. Ctn. Qty.
GPPC4IG3Y	One 4-pair GP6™ PLUS Connector on each end.	3	1	10
GPPC4IG5Y		5	1	10
GPPC4IG7Y		7	1	10
GPPC4IG9Y		9	1	10
GPPC4IG14Y		14	1	10
GPPC4IG20Y		20	1	10
GPPC4IG3AY	One 4-pair GP6™ PLUS Connector wired to a RJ45 Pan-Plug® T568A wiring scheme.	3	1	10
GPPC4IG5AY		5	1	10
GPPC4IG7AY		7	1	10
GPPC4IG9AY		9	1	10
GPPC4IG14AY		14	1	10
GPPC4IG20AY		20	1	10
GPPC4IG3BY	One 4-pair GP6™ PLUS Connector wired to a RJ45 Pan-Plug® T568B wiring scheme.	3	1	10
GPPC4IG5BY		5	1	10
GPPC4IG7BY		7	1	10
GPPC4IG9BY		9	1	10
GPPC4IG14BY		14	1	10
GPPC4IG20BY		20	1	10

To ensure optimal performance, Panduit recommends use with other Panduit TX6™ PLUS components.

Cable Labels for GP6™ PLUS Patch Cord Assemblies



Suggested Label Solutions for TIA/EIA-606-A Compliance				
Patch Cord Part Number	Laser/Ink Jet Desktop Printer Label	TDP43ME Thermal Transfer Desktop Printer Label	PanTher™ LS8E Hand-Held Printer Label	Cougar™ LS9 Hand-Held Printer Label
All GPPC4IG Parts	S100X125YAJ	S100X125VATY	S100X125VAC	T100X000CBC-BK

For complete labeling solutions and product information, reference charts on pages O.1 – O.25.





GP6™ 1 and 2-Pair Patch Cord Assemblies

- Factory assembled patch cord assembly
- Ideal for use in cross-connect applications with GP6™ PLUS Connector Blocks



GPPC1IG*Y



GPPC2IG*Y

Part Number	Part Description	Length (Ft.)	Std. Pkg. Qty.	Std. Ctn. Qty.
GPPC1IG3Y	One 1-pair GP6™ Connector on each end.	3	1	10
GPPC1IG5Y		5	1	10
GPPC1IG7Y		7	1	10
GPPC1IG9Y		9	1	10
GPPC1IG14Y		14	1	10
GPPC1IG20Y		20	1	10
GPPC2IG3Y	One 2-pair GP6™ Connector on each end.	3	1	10
GPPC2IG5Y		5	1	10
GPPC2IG7Y		7	1	10
GPPC2IG9Y		9	1	10
GPPC2IG14Y		14	1	10
GPPC2IG20Y		20	1	10

LCable Labels for GP6™ 1 and 2-Pair Patch Cord Assemblies



Suggested Label Solutions for TIA/EIA-606-A Compliance				
Patch Cord Part Number	Laser/Ink Jet Desktop Printer Label	TDP43ME Thermal Transfer Desktop Printer Label	PanTher™ LS8E Hand-Held Printer Label	Cougar™ LS9 Hand-Held Printer Label
All GPPC Parts	S100X125YAJ	S100X125VATY	S100X125VAC	T100X000CBC-BK

For complete labeling solutions and product information, reference charts on pages O.1 – O.25.





Jumper Troughs

- Available with or without legs for a variety of mounting options
- Unique finger design maintains cable bend radius

- Provide optimum cable management when used with GP6™ PLUS and Pan-Punch® Bases



Part Number	Part Description	Std. Pkg. Qty.
P110JTW-X	Jumper trough with legs.	10
P110JT-X	Jumper trough.	10
P110JTR2Y	Two jumper troughs mounted to two rack space panel.	1

GP6™ PLUS Termination Tools and Accessories

- Terminate wires on both cable and cross-connect sides of GP6™ Blocks
- Reversible blade provides option of terminating without cutting wire

- 4-pair punchdown tool seats 4 or 5-pair connecting blocks



GPDTM



GPST

Part Number	Part Description	Std. Pkg. Qty.	Std. Ctn. Qty.
4-Pair Punchdown Tool			
GPDTM	Inserts and cuts off up to 4-pairs at a time, for use with GP6™ PLUS System only.	1	10
4-Pair Replacement Head Assembly			
GPDTMH	Replacement head assembly for GP6™ PLUS 4-Pair Punchdown Tool.	1	10
4-Pair Replacement Blade			
GPDTMB	Replacement blade for GP6™ PLUS 4-Pair Punchdown Tool.	1	10
Single Wire Punchdown Tool			
GPST	Inserts and cuts off one wire at a time, for use with GP6™ PLUS System only.	1	—
Single Wire Replacement Blade			
GPSTB	Replacement blade for GP6™ PLUS Single Wire Punchdown Tool.	1	—





Pan-Punch® 110 Category 5e System Kits

- Exceed ANSI/TIA-568-C.2 Category 5e standard
- Field terminable
- Ideal for use in cross-connects and consolidation point applications
- Provide pre-packaged components necessary for termination

- Include required quantity of bases and connecting blocks, label holders and labels
- Available in 100 or 300-pair bases with 3, 4, or 5-pair connecting blocks



Part Number	Part Description	Std. Pkg. Qty.	Std. Ctn. Qty.
-------------	------------------	----------------	----------------

100-Pair Termination Kits

P110KB1004Y	Field terminated. Includes a base, 4-pair connector kit with five 4-pair connectors and one 5-pair connector per row of 25 pairs, two label holders, and two white designation labels.	1	10
P110KB1005Y	Field terminated. Includes a base, 5-pair connector kit with five 5-pair connectors per row of 25 pairs, two label holders, and two white designation labels.	1	10

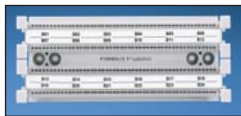
300-Pair Termination Kits

P110KB3004Y	Field terminated. Includes a base, 4-pair connector kit with five 4-pair connectors and one 5-pair connector per row of 25 pairs, six label holders, and six white designation labels.	1	10
P110KB3005Y	Field terminated. Includes a base, 5-pair connector kit with five 5-pair connectors per row of 25 pairs, six label holders, and six white designation labels.	1	10

It is common practice to completely fill each 25-pair wire strip with connecting blocks. Each kit contains the adequate number of connecting blocks to do so. Example: P110KB1004 includes five 4-pair and one 5-pair connecting block per 25-pair wiring strip for a total of twenty 4-pair and four 5-pair connecting blocks as well as two label holders and two white designation labels.

Termination tool available on page B.91.

Cable requirement: terminates most 22 – 26 AWG solid or stranded IWC wire with a 0.050" (1.27mm) max o.d., either PVC or plenum rated.



Component Quantity per Pan-Punch® 110 Category 5e Kits

Part Number	Bases			Connecting Blocks			Label Holders	Labels
	P110BW300	P110BW100	P110CB3	P110CB4	P110CB5	P110LH	DSL110	
P110KB1004Y	—	1	—	20	4	2	2	
P110KB1005Y	—	1	—	—	20	2	2	
P110KB3004Y	1	—	—	60	12	6	6	
P110KB3005Y	1	—	—	—	60	6	6	



19" Punchdown Rack Mount Panels

- Accept punchdown bases for rack mount applications



P110B100R2BY



P110B100R4BY

Part Number	Part Description	No. of Rack Spaces [^]	Std. Pkg. Qty.	Std. Ctn. Qty.
P110B100R2BY	Panel accepts up to 2 RU of punchdown bases.	2	1	10
P110B100R4BY	Panel accepts up to 4 RU of punchdown bases.	4	1	10

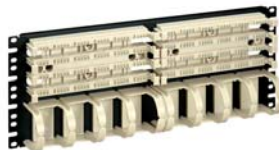
[^]One rack space = 1.75" (44.45mm).
Includes mounting screws.

Pan-Punch® Category 5e 19" Rack Mount Panels

- Exceed ANSI/TIA-568-C.2 Category 5e standard
- Ideal for use in cross-connects and consolidation point applications
- Mount to standard TIA/EIA 19" racks
- Exclusive deeper channel to facilitate TIA/EIA Category 5e cabling installations



P110B100R2Y



P110B100R4WJY

Part Number	Part Description	No. of Rack Spaces [^]	Std. Pkg. Qty.	Std. Ctn. Qty.
P110B100R2Y	Two 100-pair bases premounted to panel.	2	1	10
P110B100R4WJY	Two 100-pair bases with jumper troughs premounted to panel.	4	1	10

[^]One rack space = 1.75" (44.45mm).
Includes mounting screws.
Termination tool available on page B.91.
For connecting blocks see page B.88.
Can be clearly identified with label holders and recommended labels shown on page B.84.

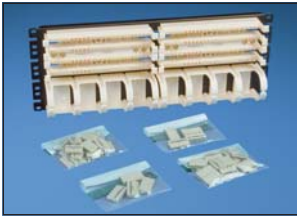
Pan-Punch[®] Category 5e 19" Rack Mount Panel Kits

- Exceed ANSI/TIA-568-C.2 Category 5e standard
- Field terminable
- Ideal for use in cross-connects and consolidation point applications

- Include required quantity of bases and connecting blocks, label holders, and labels
- Available with 4 or 5-pair connecting blocks



P110B1004R2Y



P110B1004R4WJY

Part Number	Part Description	No. of Rack Spaces [^]	Std. Pkg. Qty.	Std. Ctn. Qty.
-------------	------------------	---------------------------------	----------------	----------------

Rack Mount Panel Kit with Bases and Connecting Blocks

P110B1004R2Y	Two 100-pair bases premounted to panel. 4-pair connector kit included with five 4-pair connectors and one 5-pair connector per row of 25 pairs.	2	1	10
P110B1005R2Y	Two 100-pair bases premounted to panel. 5-pair connector kit included with five 5-pair connectors per row of 25 pairs.	2	1	10

Rack Mount Panel Kit with Bases, Connecting Blocks, and Jumper Troughs

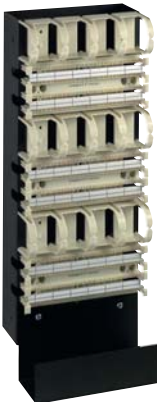
P110B1004R4WJY	Two 100-pair bases and jumper troughs premounted to 19" rack mount panel. 4-pair connector kit included with five 4-pair connectors and one 5-pair connector per row of 25 pairs.	4	1	10
P110B1005R4WJY	Two 100-pair bases and jumper troughs premounted to 19" rack mount panel with 5-pair connector kit included with five 5-pair connectors per row of 25 pairs.	4	1	10

[^]One rack space = 1.75" (44.45mm).
Includes mounting screws.
Termination tool available on page B.91.
Can be clearly identified with labels found on page B.84.



Pan-Punch[®] 110 Category 5e Tower System

- Provides a complete cross-connect system
- Designed for wall mount applications
- Available in 300 and 900 pair configurations with 3, 4, or 5-pair connecting blocks
- Supplied jumper troughs provide horizontal cable management
- Tower provides vertical feeder cable management



P110KT300Y

Part Number	Part Description	Std. Pkg. Qty.
-------------	------------------	----------------

Pan-Punch[®] 300-Pair Tower Kits

P110KT3004Y	Convenient packaging includes all of the components required to completely wire a 110 base.	1
P110KT3005Y		1

Pan-Punch[®] 900-Pair Tower Kits

P110KT9004Y	Convenient packaging includes all of the components required to completely wire a 110 base.	1
P110KT9005Y		1

Pan-Punch[®] Towers

P110T300Y	300-pair tower. Components sold separately.	1
P110T900Y	900-pair tower. Components sold separately.	1

Each tower system contains adequate connecting blocks to complete each 25-pair wiring strip. Example: P110KT3004Y includes five 4-pair and one 5-pair connecting block per 25-pair wiring strip for a total of sixty 4-pair and twelve 5-pair connecting blocks.

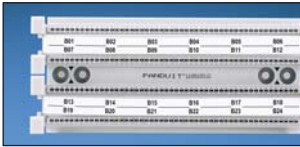
GP6™ PLUS system can be installed on individual towers, not recommended for use with GP6™ PLUS high density bases.

Termination tool available on page B.91.

Cable requirement: terminates most 22 – 26 AWG solid or stranded IWC wire with a 0.050" (1.27mm) max o.d., either PVC or plenum rated.



Component Labels for Pan-Punch® 110 Category 5e Tower Systems



Suggested Label Solutions for TIA/EIA-606-A Compliance				
Punchdown System Part Number	Laser/Ink Desktop Printer Label	TDP43ME Thermal Transfer Desktop Printer Label	PanTher™ LS8E Hand-Held Printer Label	Cougar™ LS9 Hand-Held Printer Label
All Pan-Punch® Tower Kits	C750X050Y1J	C750X050Y1T	C750X050Y1C	T050X000VPC-BK‡

For complete labeling solutions and product information, reference charts on pages O.1 – O.25.

‡For non-adhesive labeling solution, do not remove liner from label.



Vertical Cable Managers for Tower Systems

- Finger design allows for easy changes
- Can be mounted between towers
- Compatible with GP6™ PLUS or 110 Tower Systems
- Designed for wall mount or 19" rack mount applications
- Facilitates vertical cable management
- Rugged all metal construction



Part Number	Part Description	Color	Std. Pkg. Qty.
Vertical Cable Manager for use with 300-Pair Tower System			
P110VCM300	Mounts adjacent to 300-pair tower system.	Black	1
Vertical Cable Manager for use with Backboard Mounting			
P110VCM	Mounts to plywood backboard and adjacent to bases and jumper troughs. White metal backboard and large D-rings, designed for wall mount vertical or horizontal cable management.	White	1
Vertical Cable Manager for use with 900-Pair Tower System			
P110VCM900	Mounts adjacent to 900-pair tower system.	Black	1

110 Punchdown Label Holder

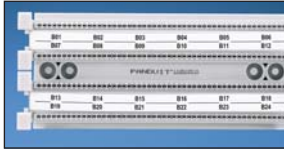
- Use with adhesive or non-adhesive designation labels



Part Number	Part Description	Std. Pkg. Qty.	Std. Ctn. Qty.
P110LH	Label holder snaps into 110 and GP6™ Bases.	6	60



Component Labels for 110 Punchdown Designation Label Holders



Suggested Label Solutions for TIA/EIA-606-A Compliance

Punchdown Holder Part Number	Laser/Ink Jet Desktop Printer Label	TDP43ME Thermal Transfer Desktop Printer Label	PanTher™ LS8E Hand-Held Printer Label	Cougar™ LS9 Hand-Held Printer Label
P110LH	C750X050Y1J	C750X050Y1T	C750X050Y1C	T050X000VPC-BK‡

For complete labeling solutions and product information, reference charts on pages O.1 – O.25.

‡For non-adhesive labeling solution, do not remove liner from label.



19" Rack Mount Bracket Kits

- Used to attach tower systems and vertical cable managers to 19" racks
- Use two towers side-by-side or a tower and a vertical wire manager side-by-side
- Include brackets and mounting screws

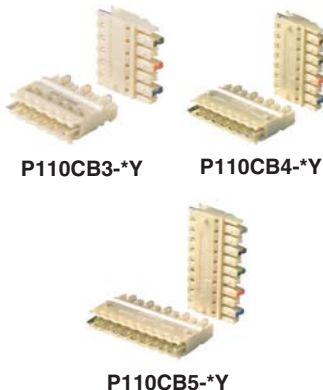


Part Number	Part Description	Std. Pkg. Qty.
P110TB300Y	Kit for 300-pair tower or vertical wire management.	1
P110TB900Y	Kit for 900-pair tower or vertical wire management.	1



Pan-Punch® 110 Category 5e Connecting Blocks

- Exceeds ANSI/TIA-568-C.2 Category 5e standard
- Available in 3, 4, or 5-pair connection blocks
- Dual IDC terminates UTP cable on 110 base and UTP cable or 110 patch cords for cross-connecting
- Highly visible color-coded wiring slots ease wiring
- Can be used with single or multiple punchdown tools
- Can be utilized with discrete wires or Pan-Punch® Patch Cord Connector
- Constructed of UL 94V-0 high impact polycarbonate material
- Patented single piece robust construction



Part Number	Part Description	Std. Pkg. Qty.	Std. Ctn. Qty.
3-Pair 110 Connecting Blocks			
P110CB3-XY	3-pair connecting block.	10	1000
P110CB3-CY		100	1000
4-Pair 110 Connecting Blocks			
P110CB4-XY	4-pair connecting block.	10	1000
P110CB4-CY		100	1000
5-Pair 110 Connecting Blocks			
P110CB5-XY	5-pair connecting block.	10	1000
P110CB5-CY		100	1000

Termination tool available on page B.91.

Cable requirement: terminates most 22 – 26 AWG solid or stranded IWC wire with a 0.050" (1.27mm) max o.d., either PVC or plenum rated.





Pan-Punch® 110 Category 5e Bases

- Exclusive deeper channel to facilitate TIA/EIA-568-C.2 Category 5e cabling installations
- Ideal for use in cross-connects and consolidation point applications
- Available with or without legs for various mounting options
- Sturdy one-piece design
- Highly visible color-coded wiring strip



P110BW100-X P110BW300-X



P110B100-X P110B300-X

Part Number	Part Description	Std. Pkg. Qty.
100-Pair Base – with Legs		
P110BW100-X	Positions and holds UTP cable for termination with Pan-Punch® 110 Connecting Blocks. Legs allow cables to be routed behind bases.	10
100-Pair Base		
P110B100-X	Positions and holds UTP cable for termination with Pan-Punch® 110 Connecting Blocks. For frame or rack mount wiring behind bases.	10
300-Pair Base – with Legs		
P110BW300-X	Positions and holds UTP cable for termination with Pan-Punch® 110 Connecting Blocks. Legs allow cables to be routed behind bases.	10
300-Pair Base		
P110B300-X	Positions and holds UTP cable for termination with Pan-Punch® 110 Connecting Blocks. For frame or rack mount wiring behind bases.	10

Cable requirement: terminates most 22 – 26 AWG solid or stranded IWC wire with a 0.050" (1.27mm) max o.d., either PVC or plenum rated.
Can be clearly identified with label holders and recommended labels shown on page B.84.



Pan-Punch® 110 Patch Connectors

- Contain two-piece, snap together housing
- Field terminable
- Cable clamp on cover provides easier wiring
- IDCs provide reliable gas-tight connections
- Strain relief reduces stress on cable
- Polarized to prevent reverse installation to connector block
- Clear polycarbonate cover keeps conductors visible after termination



P110PC1-XY P110PC2-XY



P110PC3-XY P110PC4-XY

Part Number	Part Description	Std. Pkg. Qty.	Std. Ctn. Qty.
P110PC1-XY	Terminates 1-pair, 24 AWG solid or stranded cable.	10	100
P110PC2-XY	Terminates 2-pairs, 24 AWG solid or stranded cable.	10	100
P110PC3-XY	Terminates 3-pairs, 24 AWG solid or stranded cable.	10	100
P110PC4-XY	Terminates 4-pairs, 24 AWG solid or stranded cable.	10	100





Pan-Punch® 110 Patch Cord Assemblies

- Factory assembled patch cord assembly
- Ideal for use in cross-connect applications with Pan-Punch® 110 connecting blocks



P110PC*IG*Y



P110PC*IG*AY

Part Number	Part Description	Length (Ft.)‡	Std. Pkg. Qty.	Std. Ctn. Qty.
P110PC1IG2Y	1-pair 110 connector on each end. Meets Category 3 performance requirements.	2	1	10
P110PC1IG4Y		4	1	10
P110PC1IG5Y		5	1	10
P110PC1IG6Y		6	1	10
P110PC2IG2Y	2-pair 110 connector on each end. Meets Category 5 performance requirements.	2	1	10
P110PC2IG4Y		4	1	10
P110PC2IG5Y		5	1	10
P110PC2IG6Y		6	1	10
P110PC4IG2Y	4-pair 110 connector on each end. Meets Category 5e performance requirements.	2	1	10
P110PC4IG4Y		4	1	10
P110PC4IG5Y		5	1	10
P110PC4IG6Y		6	1	10
P110PC4IG2AY	4-pair 110 connector to Pan-Plug® RJ45 modular plug – T568A wired. Meets Category 5e performance requirements.	2	1	10
P110PC4IG4AY		4	1	10
P110PC4IG5AY		5	1	10
P110PC4IG6AY		6	1	10
P110PC4IG2BY	4-pair 110 connector to Pan-Plug® RJ45 modular plug – T568B wired. Meets Category 5e performance requirements.	2	1	10
P110PC4IG4BY		4	1	10
P110PC4IG5BY		5	1	10
P110PC4IG6BY		6	1	10

‡For lengths 7, 8, 9, 12, or 15 feet, change the length designation in the part number to the desired length.

Cable Labels for Pan-Punch® 110 Patch Cord Assemblies



Suggested Label Solutions for TIA/EIA-606-A Compliance

Patch Cord Assemblies Part Number	Laser/Ink Jet Desktop Printer Label	TDP43ME Thermal Transfer Desktop Printer Label	PanTher™ LS8E Hand-Held Printer Label	Cougar™ LS9 Hand-Held Printer Label
P110PC1	S100X125YAJ	S100X125VATY	S100X125VAC	T100X000CBC-BK
P110PC2&4	S100X150YAJ	S100X150VATY	S100X150VAC	T100X000CBC-BK

For complete labeling solutions and product information, reference charts on pages O.1 – O.25.





Jumper Troughs

- Available with or without legs for a variety of mounting options
- Unique finger design maintains cable bend radius

- Provide optimum cable management when used with GP6™ PLUS and Pan-Punch® Bases



P110JT-X

P110JTW-X

Part Number	Part Description	Std. Pkg. Qty.
P110JTW-X	Jumper trough with legs.	10
P110JT-X	Jumper trough.	10
P110JTR2Y	Two jumper troughs mounted to two rack space panel.	1

Pan-Punch® Punchdown Tools and Accessories

- Terminate wires on both cable and cross-connect sides of 110 connecting blocks
- Single pair punchdown tool terminates on the back of the DP6A™ 10Gig™, DP6™ PLUS, and DP5e™ Patch Panels

- Reversible blade provides option of terminating without cutting wire
- 5-pair punchdown tool seats 3, 4, or 5-pair connecting blocks onto 110 base



PDT110M



PDT110

Part Number	Part Description	Std. Pkg. Qty.	Std. Ctn. Qty.
5-Pair Punchdown Tool			
PDT110M	5-pair punchdown tool, can terminate up to 5 pairs at a time.	1	10
Replacement Head			
PDH110M	Replacement head assembly for 5-pair punchdown tool.	1	10
Replacement Blade Assembly			
PDB110M	Replacement blade for 5-pair punchdown tool.	1	10
Single Punchdown Tool			
PDT110	Punchdown tool and blade for 110 style IDCs. Terminates and cuts UTP cable in one operation.	1	—
Replacement Blade			
PDTH110	Replacement blade for single pair punchdown tool.	1	—

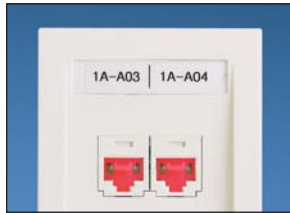


 **RJ45 Jack Blockout Device**

- Blocks unauthorized access to jacks and potentially harmful foreign objects, saving time and money associated with data security breaches, network downtime, repair and hardware replacement
- Compatible with most RJ45 jacks to accommodate a variety of applications and does not interfere with jack contacts
- Can be installed/removed without interfering with adjacent jacks or hardware
- May only be released with the special removal tool, ensuring the safety and security of your network infrastructure



PSL-DCJB



Part Number	Part Description	Color	Std. Pkg. Qty.	Std. Ctn. Qty.
PSL-DCJB*	Package of ten RJ45 jack blockout devices and one removal tool.	Red	1	20
PSL-DCJB-BL*	Package of ten RJ45 jack blockout devices and one removal tool.	Black	1	20
PSL-DCJB-BU*	Package of ten RJ45 jack blockout devices and one removal tool.	Blue	1	20
PSL-DCJB-YL*	Package of ten RJ45 jack blockout devices and one removal tool.	Yellow	1	20
PSL-DCJB-IW*	Package of ten RJ45 jack blockout devices and one removal tool.	International White	1	20
PSL-DCJB-GR*	Package of ten RJ45 jack blockout devices and one removal tool.	Green	1	20
PSL-DCJB-OR*	Package of ten RJ45 jack blockout devices and one removal tool.	Orange	1	20
PSL-DCJB-IG*	Package of ten RJ45 jack blockout devices and one removal tool.	International Gray	1	20
PSL-DCJB-VL*	Package of ten RJ45 jack blockout devices and one removal tool.	Violet	1	20

*Available in bulk packages of 100 devices and five removal tools. To order bulk package add -C to the suffix of part number.

USB Blockout Device



- Blockout devices block unauthorized access to USB ports, to provide additional security from viruses being loaded and illicit data being removed through the USB port
- Type A blockouts compatible with USB 2.0 and USB 3.0 Type “A” ports; Type B blockouts compatible with USB 2.0 Type “B” ports
- Can be installed without interfering with adjacent USB ports
- May only be released with the special removal tool, ensuring the safety and security of your network infrastructure; Permanent blockouts are not releasable



PSL-DCJBUSBA



PSL-DCJBPERM-USBA



PSL-DCJBUSBB



PSL-DCJBPERM-USBB

Part Number	Part Description	Color	Std. Pkg. Qty.	Std. Ctn. Qty.
USB Type A Blockouts				
PSL-USBA*	Package of five USB Type ‘A’ blockout devices and one removal tool.	Red	1	20
PSL-PERM-USBA	Package of ten Permanent USB Type ‘A’ blockout devices.	Red	1	20
USB Type B Blockouts				
PSL-USBB	Package of ten USB Type ‘B’ blockout devices and one removal tool.	Red	1	20
PSL-PERM-USBB	Package of ten Permanent USB Type ‘B’ blockout devices.	Red	1	20

*Available in bulk packages of 50 devices and five removal tools. To order bulk package add -L to the suffix of part number.



RJ45 Plug Lock-In Device

- Tamper-resistant design blocks unauthorized removal of cable, VoIP phone, other networking equipment, or critical connection
- Compatible with UTP and shielded Category 6A, 6, and UTP Category 5e patch cords
- Deters unauthorized users from moving or stealing VoIP phones helping to maintain E911 service

- Compact design does not interfere with adjacent jack modules, even in high-density applications
- Installation/removal tool allows plug to be locked into or released from jack module for enhanced physical security
- Locking mechanism is white for flush mount and clear for recessed devices



PPSL-DCPLRX-BL



Part Number	Part Description	Color	Std. Pkg. Qty.	Std. Ctn. Qty.
Flush – Compatible With Flush Mounted Jack Modules				
PSL-DCPLX*	Package of ten RJ45 plug lock-in devices and one installation/removal tool.	Red	1	20
PSL-DCPLX-BL*	Package of ten RJ45 plug lock-in devices and one installation/removal tool.	Black	1	20
PSL-DCPLX-BU*	Package of ten RJ45 plug lock-in devices and one installation/removal tool.	Blue	1	20
PSL-DCPLX-YL*	Package of ten RJ45 plug lock-in devices and one installation/removal tool.	Yellow	1	20
PSL-DCPLX-IW*	Package of ten RJ45 plug lock-in devices and one installation/removal tool.	International White	1	20
PSL-DCPLX-GR*	Package of ten RJ45 plug lock-in devices and one installation/removal tool.	Green	1	20
PSL-DCPLX-OR*	Package of ten RJ45 plug lock-in devices and one installation/removal tool.	Orange	1	20
PSL-DCPLX-IG*	Package of ten RJ45 plug lock-in devices and one installation/removal tool.	International Gray	1	20
PSL-DCPLX-VL*	Package of ten RJ45 plug lock-in devices and one installation/removal tool.	Violet	1	20

Recessed – Compatible With Recessed Jack Modules

PSL-DCPLRX*	Package of ten recessed RJ45 plug lock-in devices and one installation/removal tool.	Red	1	20
PSL-DCPLRX-BL*	Package of ten recessed RJ45 plug lock-in devices and one installation/removal tool.	Black	1	20
PSL-DCPLRX-BU*	Package of ten recessed RJ45 plug lock-in devices and one installation/removal tool.	Blue	1	20
PSL-DCPLRX-YL*	Package of ten recessed RJ45 plug lock-in devices and one installation/removal tool.	Yellow	1	20
PSL-DCPLRX-IW*	Package of ten recessed RJ45 plug lock-in devices and one installation/removal tool.	International White	1	20
PSL-DCPLRX-GR*	Package of ten recessed RJ45 plug lock-in devices and one installation/removal tool.	Green	1	20
PSL-DCPLRX-OR*	Package of ten recessed RJ45 plug lock-in devices and one installation/removal tool.	Orange	1	20
PSL-DCPLRX-IG*	Package of ten recessed RJ45 plug lock-in devices and one installation/removal tool.	International Gray	1	20
PSL-DCPLRX-VL*	Package of ten recessed RJ45 plug lock-in devices and one installation/removal tool.	Violet	1	20

*Available in bulk packages of 100 devices and five installation/removal tools. To order bulk package add -C to the suffix of part number. The RJ45 plug lock-in device may not be compatible with all jacks, overmolded cables, or PanView™ Cables.

Self-Laminating Cable Marker Holders for Large Cables or Cable Bundles

- Durable tag to mark a wide range of cables and cable bundles
- Can be used with printer generated labels or hand-written
- Attaches easily with Panduit intermediate or standard cross-section nylon cable ties or Panduit® Tak-Ty® Hook & Loop Cable Ties
- Clear overlamine protects legend
- Can be applied as a wrap-around marker (parallel to cable) or flag marker (45° or 90° to cable)
- Available in white, yellow, orange, and gray
- Large label area provides ample room for complex labeling scheme



SLCT-WH



SLCT-OR

Part Number	Part Description	Width		Height		Std. Pkg. Qty.	Std. Ctn. Qty.
		In.	mm	In.	mm		
SLCT-WH	White, self-laminating cable marker holder, 25 tags/pkg.	3.00	76.2	1.31	33.3	1	4
SLCT-OR	Orange, self-laminating cable marker holder, 25 tags/pkg.	3.00	76.2	1.31	33.3	1	4
SLCT-YL	Yellow, self-laminating cable marker holder, 25 tags/pkg.	3.00	76.2	1.31	33.3	1	4
SLCT-IG	Gray, self-laminating cable marker holder, 25 tags/pkg.	3.00	76.2	1.31	33.3	1	4

Attach with Panduit Intermediate or Standard cross section cable ties.

Component Labels for Self-Laminating Cable Markers or Large Cables or Cable Bundles

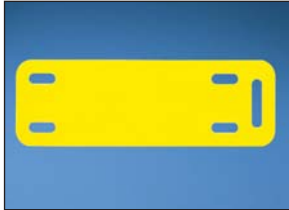


Suggested Label Solutions for TIA/EIA-606-A Compliance				
Cable Marker Holder Part Number	Laser/Ink Jet Desktop Printer Label	TDP43ME Thermal Transfer Desktop Printer Label	PanTher™ LS8E Hand-Held Printer Label	Cougar™ LS9 Hand-Held Printer Label
All SLCT Parts	C200X100FJJ	C200X100YPT	C200X100FJC	T100X000VPC-BK

For complete labeling solutions and product information, reference charts on pages O.1 – O.25.

Thermal Transfer Marker Plates

- Non-adhesive marker plates offer crisp, clear legends with superior legibility
- Attachable in a horizontal or vertical orientation
- Available in a variety of colors and sizes
- Use with Panduit RMR4BL resin thermal transfer ribbon



Part Number	Part Description	Width		Height		Print-On Area Width		Labels Per Roll	Std. Pkg. Qty.	Std. Ctn. Qty.
		In.	mm	In.	mm	In.	mm			
M300X100Y6T	Yellow, thermal transfer marker plate.	3.00	76.2	1.00	25.4	1.80	45.7	500	1	4
M300X100Y7T	White, thermal transfer marker plate.	3.00	76.2	1.00	25.4	1.80	45.7	500	1	4
M300X050Y6T	Yellow, thermal transfer marker plate.	3.00	76.2	0.50	12.7	2.07	52.6	500	1	4
M300X050Y7T	White, thermal transfer marker plate.	3.00	76.2	0.50	12.7	2.07	52.6	500	1	4
M200X100Y6T	Yellow, thermal transfer marker plate.	2.00	50.8	1.00	25.4	0.80	20.3	500	1	4
M200X100Y7T	White, thermal transfer marker plate.	2.00	50.8	1.00	25.4	0.80	20.3	500	1	4
M200X050Y6T	Yellow, thermal transfer marker plate.	2.00	50.8	0.50	12.7	1.07	27.3	500	1	4
M200X050Y7T	White, thermal transfer marker plate.	2.00	50.8	0.50	12.7	1.07	27.3	500	1	4

Patch Cord Color Bands

- Removable band snaps on and off individual cables allowing the same patch cord to be used for different applications
- Can be installed next to each other allowing multiple color bands to be used on one cable, offering endless color coding options
- Internal grooves secure color bands in place on cable providing easy identification at the connection
- Available in 10 standard colors that match Panduit connectivity providing an aesthetically pleasing solution
- Compatible with all Panduit patch cords, existing and new installations can be color-coded as networks change



Part Number	Part Description	Color	Std. Pkg. Qty.
PCBANDBL-Q	Snaps onto individual patch cable for additional color-coding.	Black	25
PCBANDBU-Q		Blue	25
PCBANDWH-Q		White	25
PCBANDEI-Q		Electric Ivory	25
PCBANDIG-Q		International Gray	25
PCBANDOR-Q		Orange	25
PCBANDRD-Q		Red	25
PCBANDGR-Q		Green	25
PCBANDYL-Q		Yellow	25
PCBANDVL-Q		Violet	25

Patch cords available on pages B.18, B.25, B.34, B.46, B.50.

Cable Prep Tools

- Copper Wire Snipping Tool (CWST) cuts conductors flush for improved performance
- Adjustable Cable Jacket Stripping Tool (CJAST) strips outer jacket of 4-pair UTP and shielded copper cable



CWST



CJAST

Part Number	Part Description	Std. Pkg. Qty.
CWST	Copper conductor snipping tool.	1
CJAST	Cable jacket stripping tool.	1
CJASTB	Replacement blade for cable stripping tool CJAST.	1

Module Termination Tools and Accessories

- TGJT termination tool easily terminates all TG style jack modules, reducing installation time by 25%
- EGJT tool assists in terminating all enhanced Giga-TX™ Style Jack Modules by ensuring conductors are fully terminated by utilizing smooth forward motion without impact on critical internal components for maximum reliability
- CGJT termination tool terminates all Mini-Com® Mini-Jack™ Jack Modules
- CJT-X tool assists in terminating all Mini-Com® Mini-Jack™ Jack Modules by ensuring conductors are fully terminated
- Punchdown base (AVPDB) available for terminating S-video and RCA punchdown modules
- Dust cap keeps out dust and debris from RJ45 style jack modules while not in use



TGJT



EGJT



CGJT



CJT-X



AVPDB



MDC-C

Part Number	Part Description	Std. Pkg. Qty.	Std. Ctn. Qty.
TGJT	TG termination tool easily terminates all TG style jack modules by cutting conductors flush and assembling wire cap and jack. Ideal for high volume installations.	1	—
EGJT	Terminates enhanced Giga-TX™ TG Style Jack Modules.	1	50
CGJT	Terminates Giga-TX™ TP Style Jack Modules.	1	50
CJT-X	Terminates Mini-Com® Mini-Jack™ Jack Modules.	10	50
AVPDB	Audio/video punchdown base used to assist in terminating Mini-Com® S-Video and RCA Punchdown Modules.	1	50
MDC-C	Jack module dust cap. Compatible with all RJ45 Mini-Com® Jack Modules.	100	1000

Patch cord and connector removal tools for high-density applications are available on page B.98.

Patch Cord Removal Tool

- Tool arms allow the installer to pass over cabling which interferes with accessibility
- Compatible with copper and fiber patch cords
- Optional flashlight kit (KPCRT1-FL) attaches to top of tool



PCRT1



KPCRT1-FL

Part Number	Part Description	Std. Pkg. Qty.
PCRT1	Easily removes copper and fiber patch cords in dense rack installations.	1
KPCRT1-FL	Flashlight kit for patch cord removal tool (PCRT1).	1

Modular Plug Termination Tools

- WPT-8 arranges all eight conductors in the proper sequence and provides proper gauge length for trimming conductors for MP588
- MPT5-8AS required for modular plug termination



WPT-8



MPT5-8AS

Part Number	Part Description	Std. Pkg. Qty.	Std. Ctn. Qty.
Wire Prep Tool			
WPT-8	Crimp tool for TX6™ PLUS and Pan-Plug™ Modular Plugs.	1	10
Modular Plug Installation Tool			
MPT5-8AS	Crimp tool for TX6™ PLUS and Pan-Plug® Modular Plugs.	1	—