

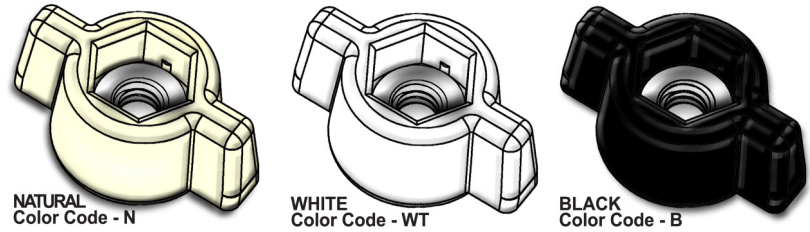
PRESS-LOC THUMB SCREW KNOBS

HEX PRESS-LOC WING THUMB SCREW KNOBS

NOTE: 29RN and WN fit hex nuts and hex head cap screws.
TO IFI TOLERANCES

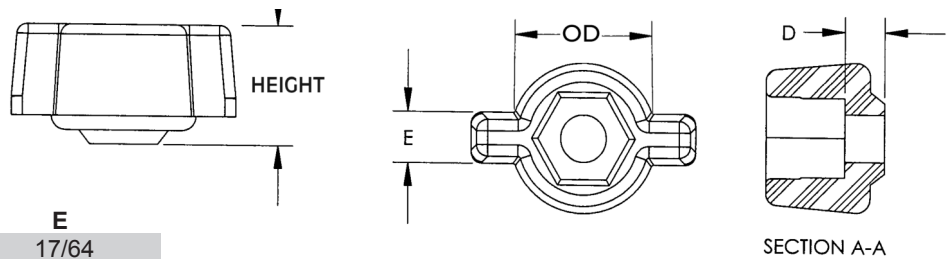
NOTE

IF SCREW OR NUT IS PLATED, PAINTED OR NOT TO IFI STANDARD TOLERANCES, WE STRONGLY RECOMMEND SAMPLES FOR FIT BEFORE ORDERING LARGE QUANTITIES.



DOES NOT INCLUDE STEEL NUT

PART NUMBER	COLOR
29WN014N	NATURAL
29WN014B	BLACK
29WN014WT	WHITE

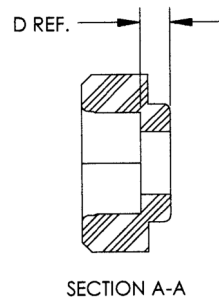
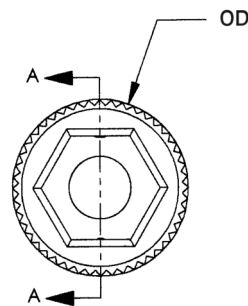
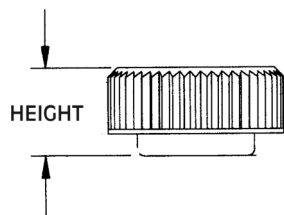


PART NUMBER	SCREW SIZE	OD	HEIGHT	D	E
29WN014	1/4	13/16	21/32	7/32	17/64

HEX PRESS-LOC ROUND THUMB SCREW KNOBS

Micro Plastics' nylon Press-Loc Knobs are designed to press onto standard steel hex head cap screws and hex nuts. Knobs are easily assembled by pressing the steel nut or screw into the plastic knob.

NOTE: 29RN and WN fit hex nuts and hex head cap screws.



BLACK
Color Code - B



BLACK
Color Code - B



WHITE
Color Code - WT

NOTE

IF SCREW OR NUT IS PLATED, PAINTED OR NOT TO IFI STANDARD TOLERANCES, WE STRONGLY RECOMMEND SAMPLES FOR FIT BEFORE ORDERING LARGE QUANTITIES

PART NUMBER	COLOR
29RN147N	NATURAL
29RN147B	BLACK
29RN147WT	WHITE

PART NUMBER	SCREW SIZE	OD	HEIGHT	D
29RN147	1/4	3/4	3/8	1/8 Ref.

DOES NOT INCLUDE STEEL SCREW

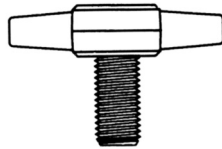
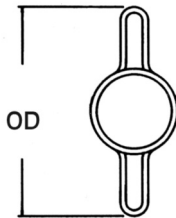


PRESS-LOC THUMB SCREW KNOBS

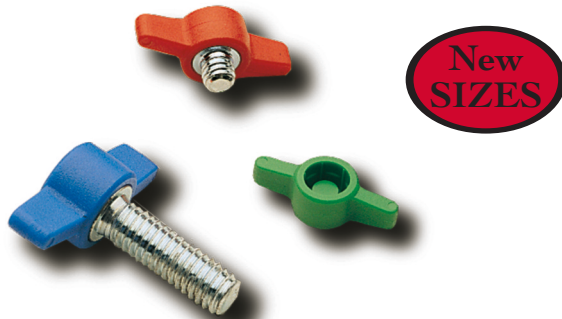
SECTION I

PLASTIC HEADS ARE MOLDED ONTO ZINC PLATED STEEL ALLOY SOCKET HEAD CAP SCREWS.

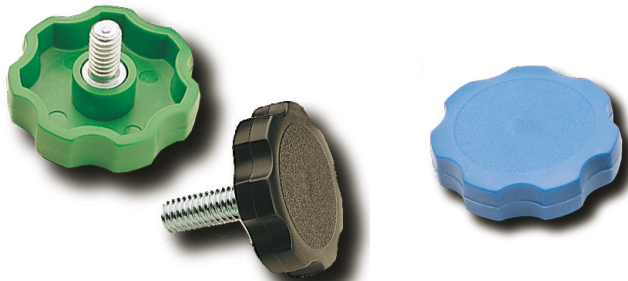
Height



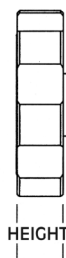
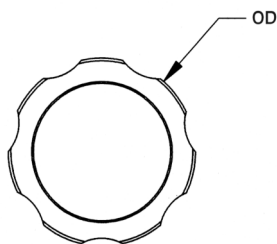
#8 and #10 screws are fully threaded up to and including 1" long
1/4"-20" screws are fully threaded up to and including 1 1/4" long
5/16" and 3/8" screws are fully threaded up to and including 1 1/2" long



COLOR CODES MUST BE INCLUDED WITH THE ITEM NUMBER WHEN ORDERING!
B - BLACK **RD - RED** **WT - WHITE**
BL - BLUE **GR - GREEN**



#8 and #10 screws are fully threaded up to and including 1" long
1/4"-20" screws are fully threaded up to and including 1 1/4" long
5/16" and 3/8" screws are fully threaded up to and including 1 1/2" long



WING HEAD - KNOBS

MATERIAL - ACETAL

ITEM NUMBER	SCREW SIZE	SPECIFICATIONS OD	HEIGHT
29W010	#10	1"	1/4"
29W014	1/4	1-17/64"	11/32"
29W516	5/16	1-1/2"	13/32"
29W038	3/8	1-25/32"	31/64"

WING HEAD - SCREW

MOLDED ONTO ZINC PLATED STEEL ALLOY SOCKET HEAD CAP SCREW.

NYLON 6/6

ITEM NUMBER	THREAD	SCREW SIZE	LENGTH	OD
29W010S025	10-32	10	1/4"	1"
29W010S037	10-32	10	3/8"	1"
29W010S050	10-32	10	1/2"	1"
29W010S075	10-32	10	3/4"	1"
29W010S100	10-32	10	1"	1"
29W010S150	10-32	10	1-1/2"	1"
29W014S050	1/4-20	1/4	1/2"	1-17/64"
29W014S062	1/4-20	1/4	5/8"	1-17/64"
29W014S075	1/4-20	1/4	3/4"	1-17/64"
29W014S100	1/4-20	1/4	1"	1-17/64"
29W014S125	1/4-20	1/4	1-1/4"	1-17/64"
29W014S150	1/4-20	1/4	1-1/2"	1-17/64"
29W516S050	5/16-18	5/16	1/2"	1-1/2"
29W516S075	5/16-18	5/16	3/4"	1-1/2"
29W516S100	5/16-18	5/16	1"	1-1/2"
29W516S150	5/16-18	5/16	1-1/2"	1-1/2"
29W038S075	3/8-16	3/8	3/4"	1-25/32"
29W038S100	3/8-16	3/8	1"	1-25/32"
29W038S150	3/8-16	3/8	1-1/2"	1-25/32"

FLOWERETTE - KNOBS

PRESSES ONTO ANY STD. SOCKET HEX CAP SCREW.

MATERIAL - ACETAL

ITEM NUMBER	SCREW SIZE	SPECIFICATIONS HEIGHT	OD
29F014	1/4	3/8"	1 1/2
29F516	5/16	3/8"	1 1/2
29F038	3/8	3/8"	1 1/2

FLOWERETTE - SCREW

MOLDED ONTO ZINC PLATED STEEL ALLOY SOCKET HEAD CAP SCREW.

NYLON 6

ITEM NUMBER	THREAD	SCREW SIZE	LENGTH	OD
29F014S050	1/4-20	1/4	1/2"	1-1/2"
29F014S075	1/4-20	1/4	3/4"	1-1/2"
29F014S100	1/4-20	1/4	1"	1-1/2"
29F014S150	1/4-20	1/4	1-1/2"	1-1/2"
29F516S050	5/16-18	5/16	1/2"	1-1/2"
29F516S075	5/16-18	5/16	3/4"	1-1/2"
29F516S100	5/16-18	5/16	1"	1-1/2"
29F516S150	5/16-18	5/16	1-1/2"	1-1/2"
29F038S075	3/8-16	3/8	3/4"	1-1/2"
29F038S100	3/8-16	3/8	1"	1-1/2"
29F038S150	3/8-16	3/8	1-1/2"	1-1/2"



PRESS-LOC THUMB SCREW KNOBS

SECTION

I

STANDARD - ROUND HEAD - KNOB

PRESSES ONTO ANY STD. SOCKET HEX CAP SCREW

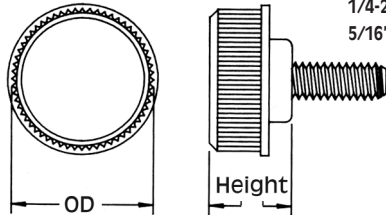
ITEM NUMBER	Material: ACETAL		SPECIFICATIONS	
	SCREW SIZE	OD	HEIGHT	
29R004	#4	5/16"	11/64"	
29R006	#6	3/8"	13/64"	
29R008	#8	1/2"	7/32"	
29R010	#10	21/32"	1/4"	
29R147	1/4	3/4"	5/16"	
29R141	1/4	1"	21/64"	
29R516	5/16	1"	25/64"	

METRIC - ROUND HEAD - KNOB

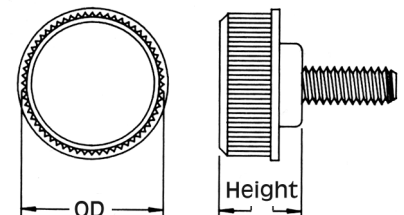
PRESSES ONTO ANY STD. SOCKET HEX CAP SCREW.

ITEM NUMBER	Material: ACETAL		SPECIFICATIONS	
	SCREW SIZE	OD	HEIGHT	
29M300R	M 3	9,53	5,16	
29M400R	M 4	12,70	5,56	
29M500R	M 5	16,60	6,35	
29M600R	M 6	19,05	7,93	
29M601R	M 6	25,40	8,33	
29M801R	M 8	25,40	9,92	

#8 and #10 screws are fully threaded up to and including 1" long
 1/4-20" screws are fully threaded up to and including 1 1/4" long
 5/16" and 3/8" screws are fully threaded up to and including 1 1/2" long



ROUND HEAD DRAWING FOR:
 STANDARD HEAD DIA.
 5/16" THROUGH 1"



ROUND HEAD DRAWING FOR:
 METRIC HEAD DIA.
 9,53 THROUGH 25,40

NOTE: PRESS LOC THUMB SCREWS ARE DESIGNED TO BE HAND TIGHTENED.

STANDARD - ROUND HEAD - SCREW

NYLON 6

MOLDED ONTO ZINC PLATED STEEL ALLOY SOCKET HEAD CAP SCREW.

ITEM NUMBER	THREAD	SCREW SIZE	LENGTH	OD
29R004S025	4-40	4	1/4"	5/16"
29R004S037	4-40	4	3/8"	5/16"
29R004S050	4-40	4	1/2"	5/16"
29R004S075	4-40	4	3/4"	5/16"
29R006S025	6-32	6	1/4"	3/8"
29R006S037	6-32	6	3/8"	3/8"
29R006S050	6-32	6	1/2"	3/8"
29R006S062	6-32	6	5/8"	3/8"
29R006S075	6-32	6	3/4"	3/8"
29R008S025	8-32	8	1/4"	1/2"
29R008S037	8-32	8	3/8"	1/2"
29R008S050	8-32	8	1/2"	1/2"
29R008S075	8-32	8	3/4"	1/2"
29R008S100	8-32	8	1"	1/2"
29R010S037	10-32	10	3/8"	21/32"
29R010S050	10-32	10	1/2"	21/32"
29R010S075	10-32	10	3/4"	21/32"
29R010S100	10-32	10	1"	21/32"
29R010S150	10-32	10	1-1/2"	21/32"
29R147S050	1/4-20	1/4	1/2"	3/4"
29R147S075	1/4-20	1/4	3/4"	3/4"
29R147S100	1/4-20	1/4	1"	3/4"
29R147S125	1/4-20	1/4	1-1/4"	3/4"
29R147S150	1/4-20	1/4	1-1/2"	3/4"
29R141S050	1/4-20	1/4	1/2"	1"
29R141S075	1/4-20	1/4	3/4"	1"
29R141S100	1/4-20	1/4	1"	1"
29R141S125	1/4-20	1/4	1-1/4"	1"
29R141S150	1/4-20	1/4	1-1/2"	1"
29R516S050	5/16-18	5/16	1/2"	1"
29R516S075	5/16-18	5/16	3/4"	1"
29R516S100	5/16-18	5/16	1"	1"
29R516S150	5/16-18	5/16	1-1/2"	1"

METRIC - ROUND HEAD - SCREW

NYLON 6

MOLDED ONTO ZINC PLATED STEEL ALLOY SOCKET HEAD CAP SCREW.

ITEM NUMBER	SCREW SIZE	LENGTH	OD
29M30050R008	M 3	M 8	9,53
29M30050R010	M 3	M 10	9,53
29M30050R012	M 3	M 12	9,53
29M30050R016	M 3	M 16	9,53
29M40070R010	M 4	M 10	12,70
29M40070R012	M 4	M 12	12,70
29M40070R016	M 4	M 16	12,70
29M40070R020	M 4	M 20	12,70
29M40070R025	M 4	M 25	12,70
29M50080R012	M 5	M 12	16,60
29M50080R016	M 5	M 16	16,60
29M50080R020	M 5	M 20	16,60
29M50080R025	M 5	M 25	16,60
29M50080R040	M 5	M 40	16,60
29M60100R012	M 6	M 12	19,05
29M60100R016	M 6	M 16	19,05
29M60100R020	M 6	M 20	19,05
29M60100R025	M 6	M 25	19,05
29M60100R040	M 6	M 40	19,05
29M61100R012	M 6	M 12	25,40
29M61100R016	M 6	M 16	25,40
29M61100R020	M 6	M 20	25,40
29M61100R025	M 6	M 25	25,40
29M61100R040	M 6	M 40	25,40
29M80125R012	M 8	M 12	25,40
29M80125R016	M 8	M 16	25,40
29M80125R020	M 8	M 20	25,40
29M80125R025	M 8	M 25	25,40
* 29M80125R040	M 8	M 40	25,40

* NOT FULLY THREADED

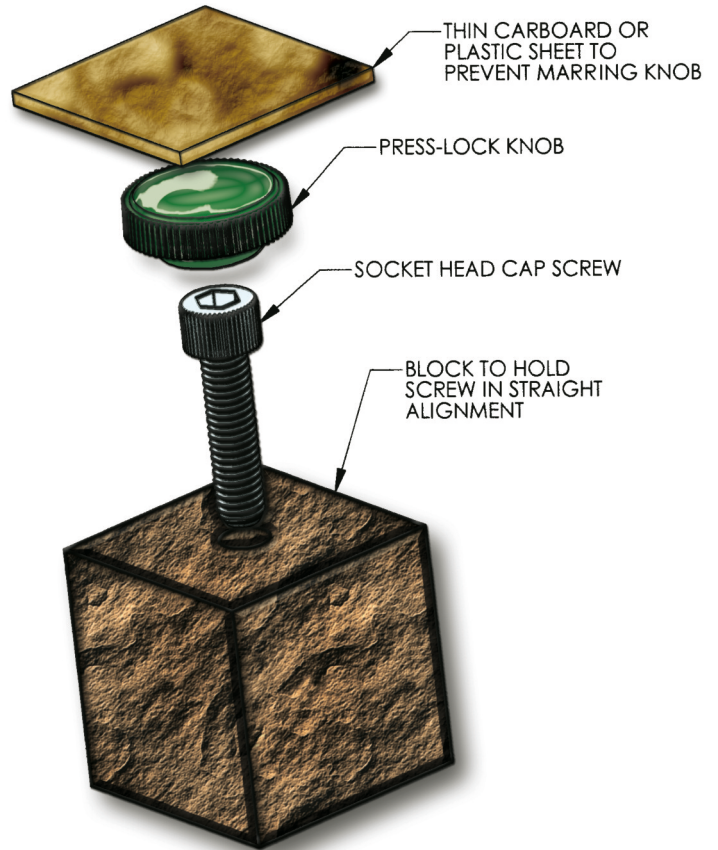


PRESS-LOC THUMB SCREW KNOBS

SECTION
I

EASY TO ASSEMBLE INSTANT THUMB SCREWS

Micro Plastics' Press-Loc Thumb Screw Knobs can be assembled to the appropriate size hexagon socket head cap screw in various ways. Any device that provides a positive clamping force, such as a bench vise or arbor press will perform the assembly. The socket head cap screw must be aligned with the matching counterbore provided in the Press-Loc knob, place the assembly between the clamping jaws of the assembly device and provide enough force to press the knob completely over the head of the screw. A small section of thin cardboard or smooth plastic placed between the surface of the Press-Loc knob and the clamping jaw is recommended to prevent marring of the knob surface.



PRESS-LOC ASSORTMENT KITS

FLOWERETTE 144 PIECE

ASSORTMENT CONSISTS OF APPROX:
48 - 1/4"
48 - 5/16"
48 - 3/8"

Assorted Colors

O4ASO144FPL

WING 312 PIECE

ASSORTMENT CONSISTS OF APPROX:
72 - 1/4"
78 - 5/16"
72 - 3/8"
90 - #10

Assorted Colors

O4ASO312WPL

ROUND 704 PIECE

ASSORTMENT CONSISTS OF APPROX:
102 - 5/16"
102 - 1/4 X 1"
100 - 1/4 X 3/4"
100 - #10
100 - #8
100 - #6
100 - #4

Assorted Colors

O4ASO704RPL

ROUND 380 PIECE

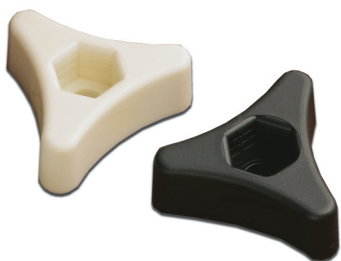
ASSORTMENT CONSISTS OF APPROX:
40 - 5/16"
40 - 1/4 X 1"
75 - 1/4 X 3/4"
75 - #10
50 - #8
50 - #6
50 - #4

Assorted Colors

O4ASO380RPL

HEX PRESS-LOC TRI KNOB

Micro Plastics' nylon press-loc tri knobs are designed to press on to 1/4" standard steel hex nuts and 1/4" hex head cap screws. Knobs are easily assembled by pressing the steel nut or screw into the plastic tri knob. Available in natural and black nylon 6/6.



PART NUMBER	SCREW SIZE	OD	COLOR
29TL250N	1/4	1 5/8	NATURAL
29TL250B	1/4	1 5/8	BLACK
29TL250WT	1/4	1 5/8	WHITE

