

# METRIC WASHERS AND SCREW INSULATORS

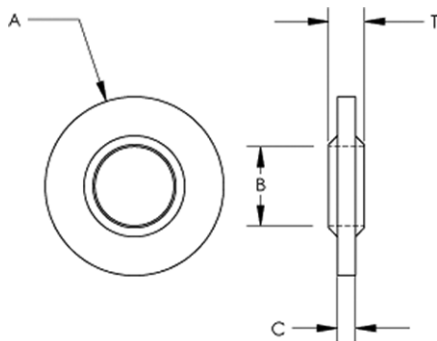
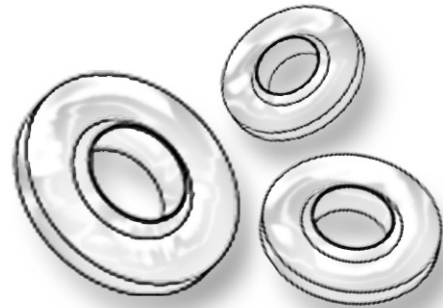
SECTION  
**XIV**

ALL DIMENSIONS ARE IN MILLIMETERS

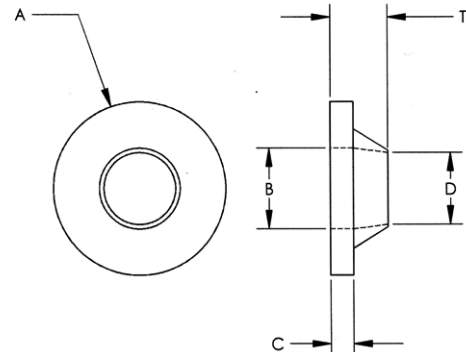
## LOCKING AND SEALING WASHERS

Molded in **Natural Nylon 6/6**

Micro Plastics locking and sealing washers are made of natural nylon 6/6. This washer's unique geometry creates an interference both on the OD of a hex nut, and on the ID on the shanks or thread of the screw. As the screw is tightened, the OD cold flows around the hex of a nut, and the ID cold flows into the threads of the bolt or screw.



**PART DESIGN A**



**PART DESIGN B**

ITEM NUMBER	SCREW SIZE		DESIGN TYPE	ID B	SHANK ID D	OD A	WASHER THICKNESS C	THICKNESS T
	METRIC	INCH						
16MLSW030070070	M3	#5	A	3.10 MM		7.00 MM	0.70 MM	1.40 MM
16MLSW040090125	M4	#8	A	4.15 MM		9.00 MM	1.25 MM	1.25 MM
16MLSW050104140	M5	#10	A	5.15 MM		10.40 MM	1.40 MM	3.50 MM
16MLSW060120160	M6		A	6.10 MM		12.00 MM	1.60 MM	4.00 MM
16MLSW080158210	M8	5/16	A	8.10 MM		15.80 MM	2.10 MM	4.60 MM
16MLSW100196210	M10	3/8	A	10.00 MM		19.60 MM	2.10 MM	5.30 MM
16MLSW140252250	M14	9/16	A	14.00 MM		25.20 MM	2.50 MM	5.50 MM
16MLSW042090120	M4.2		B	4.20 MM	4.20 MM	9.00 MM	1.20 MM	3.00 MM
16MLSW048100150	M4.8		B	4.80 MM	4.80 MM	10.00 MM	1.50 MM	3.20 MM
16MLSW060125150	M6		B	6.30 MM	6.30 MM	12.50 MM	1.50 MM	2.80 MM
16MLSW080160160	M8		B	8.20 MM	8.20 MM	16.00 MM	1.60 MM	3.10 MM
* 16MLSW103150200		R 1/8	B	10.30 MM	9.45 MM	15.00 MM	2.00 MM	4.00 MM
* 16MLSW132190250		R 1/4	B	13.20 MM	12.20 MM	19.00 MM	2.50 MM	4.50 MM

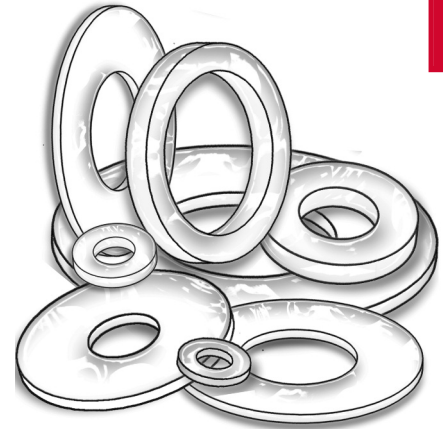
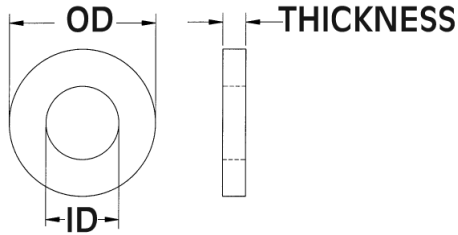
\* WHITWORTH TAPERED PIPE THREAD



# METRIC WASHERS AND SCREW INSULATORS

ALL DIMENSIONS ARE IN MILLIMETERS

SECTION  
**XIV**



## STANDARD WASHERS - DIN 34815

Molded in Natural Nylon 6/6

ITEM NUMBER	THREAD SIZE	MAX. OD	MIN. OD	MAX. ID	MIN. ID	MAX. THICKNESS	MIN. THICKNESS
17M04DIN34815	M4	9 MM	8.64 MM	4.48 MM	4.3 MM	0.9 MM	0.7 MM
17M05DIN34815	M5	10 MM	9.64 MM	5.48 MM	5.3 MM	1.1 MM	0.9 MM
17M06DIN34815	M6	12 MM	11.57 MM	6.62 MM	6.4 MM	1.8 MM	1.4 MM
17M08DIN34815	M8	16 MM	15.57 MM	8.62 MM	8.4 MM	1.8 MM	1.4 MM
17M10DIN34815	M10	20 MM	19.48 MM	10.77 MM	10.5 MM	2.2 MM	1.8 MM
17M12DIN34815	M12	24 MM	23.48 MM	13.27 MM	13 MM	2.7 MM	2.3 MM
17M16DIN34815	M16	30 MM	29.48 MM	17.27 MM	17 MM	3.3 MM	2.7 MM
17M20DIN34815	M20	37 MM	36.38 MM	21.33 MM	21 MM	3.3 MM	2.7 MM

## LARGE WASHERS - DIN 34816

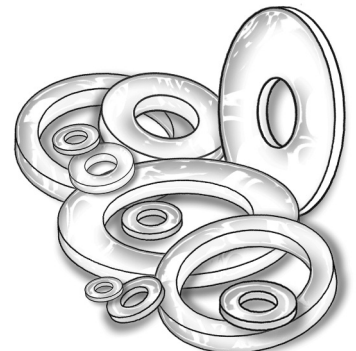
Molded in Natural Nylon 6/6

ITEM NUMBER	THREAD SIZE	MAX. OD	MIN. OD	MAX. ID	MIN. ID	MAX. THICKNESS	MIN. THICKNESS
17M03DIN34816	M3	9 MM	8.64 MM	3.38 MM	3.2 MM	0.9 MM	0.7 MM
17M04DIN34816	M4	12 MM	11.57 MM	4.48 MM	4.3 MM	1.1 MM	0.9 MM
17M05DIN34816	M5	15 MM	14.57 MM	5.48 MM	5.3 MM	1.4 MM	1.0 MM
17M06DIN34816	M6	18 MM	17.57 MM	6.62 MM	6.4 MM	1.8 MM	1.4 MM
17M08DIN34816	M8	24 MM	23.48 MM	8.62 MM	8.4 MM	2.2 MM	1.8 MM
17M10DIN34816	M10	30 MM	29.48 MM	10.77 MM	10.5 MM	2.7 MM	2.3 MM
17M12DIN34816	M12	37 MM	36.38 MM	13.27 MM	13 MM	3.3 MM	2.7 MM
17M16DIN34816	M16	50 MM	49.38 MM	17.27 MM	17 MM	3.3 MM	2.7 MM

## FLAT WASHERS

Molded in Natural Nylon 6/6

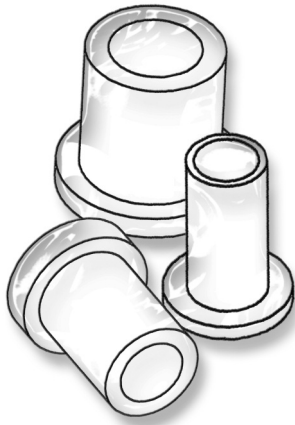
ITEM NUMBER	THREAD SIZE	OD	ID	THICKNESS
16M02050080	M2	5.00 MM	2.15 MM	0.80 MM
16M02556080	M2.5	5.60 MM	2.65 MM	0.80 MM
16M03080080	M3	8.00 MM	3.20 MM	0.80 MM
16M03580080	M3.5	8.00 MM	3.70 MM	0.80 MM
16M04090080	M4	9.00 MM	4.30 MM	0.80 MM
16M05011100	M5	11.00 MM	5.30 MM	1.00 MM
16M06012150	M6	12.00 MM	6.40 MM	1.50 MM
16M08018200	M8	18.00 MM	8.40 MM	2.00 MM
16M08525200	M8.5	25.00 MM	8.50 MM	2.00 MM
16M10022250	M10	22.00 MM	10.50 MM	2.50 MM
16M12025200	M12	25.14 MM	13.43 MM	2.53 MM
16M12034250	M12	33.64 MM	13.40 MM	3.06 MM



# METRIC WASHERS AND SCREW INSULATORS

SECTION  
**XIV**

ALL DIMENSIONS ARE IN MILLIMETERS

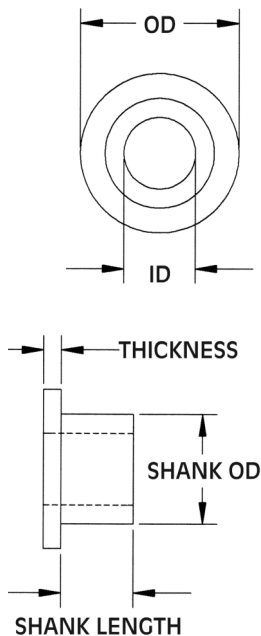


Nylon Screw Insulators are used to isolate metal screws electrically as well as to reduce corrosion. They can be used as light load bearings in many applications. Specials can be made to order for small tool charge. Specify the screw size and length when ordering.

SIZES NOT SHOWN WILL BE TOOLED UPON REQUEST

## SCREW INSULATORS

Molded in **Natural Nylon 6/6**



ITEM NUMBER	DESCRIPTION	SHANK LENGTH	OD	THICKNESS	SHANK OD	ID
10SCM002003	SCM 2 X 3	3 MM	4.2 MM	1.0 MM	3.0 MM	2.1 MM
10SCM002004	SCM 2 X 4	4 MM	4.2 MM	1.0 MM	3.0 MM	2.1 MM
10SCM002005	SCM 2 X 5	5 MM	4.2 MM	1.0 MM	3.0 MM	2.1 MM
10SCM002006	SCM 2 X 6	6 MM	4.2 MM	1.0 MM	3.0 MM	2.1 MM
10SCM003002	SCM 3 X 2	2 MM	6.2 MM	1.0 MM	4.0 MM	3.1 MM
10SCM003003	SCM 3 X 3	3 MM	6.2 MM	1.0 MM	4.0 MM	3.1 MM
10SCM003004	SCM 3 X 4	4 MM	6.2 MM	1.0 MM	4.0 MM	3.1 MM
10SCM003005	SCM 3 X 5	5 MM	6.2 MM	1.0 MM	4.0 MM	3.1 MM
10SCM003006	SCM 3 X 6	6 MM	6.2 MM	1.0 MM	4.0 MM	3.1 MM
10SCM003007	SCM 3 X 7	7 MM	6.2 MM	1.0 MM	4.0 MM	3.1 MM
10SCM003008	SCM 3 X 8	8 MM	6.2 MM	1.0 MM	4.0 MM	3.1 MM
10SCM003009	SCM 3 X 9	9 MM	6.2 MM	1.0 MM	4.0 MM	3.1 MM
10SCM003010	SCM 3 X 10	10 MM	6.2 MM	1.0 MM	4.0 MM	3.1 MM
10SCM004003	SCM 4 X 3	3 MM	8.4 MM	1.5 MM	6.0 MM	4.1 MM
10SCM004004	SCM 4 X 4	4 MM	8.4 MM	1.5 MM	6.0 MM	4.1 MM
10SCM004005	SCM 4 X 5	5 MM	8.4 MM	1.5 MM	6.0 MM	4.1 MM
10SCM004007	SCM 4 X 7	7 MM	8.4 MM	1.5 MM	6.0 MM	4.1 MM
10SCM004009	SCM 4 X 9	9 MM	8.4 MM	1.5 MM	6.0 MM	4.1 MM
10SCM005003	SCM 5 X 3	3 MM	10.2 MM	2.0 MM	7.0 MM	5.1 MM
10SCM005004	SCM 5 X 4	4 MM	10.2 MM	2.0 MM	7.0 MM	5.1 MM
10SCM005005	SCM 5 X 5	5 MM	10.2 MM	2.0 MM	7.0 MM	5.1 MM
10SCM005007	SCM 5 X 7	7 MM	10.2 MM	2.0 MM	7.0 MM	5.1 MM
10SCM005009	SCM 5 X 9	9 MM	10.2 MM	2.0 MM	7.0 MM	5.1 MM
10SCM006004	SCM 6 X 4	4 MM	12.2 MM	2.0 MM	8.0 MM	6.1 MM
10SCM006006	SCM 6 X 6	6 MM	12.2 MM	2.0 MM	8.0 MM	6.1 MM
10SCM006008	SCM 6 X 8	8 MM	12.2 MM	2.0 MM	8.0 MM	6.1 MM
10SCM006010	SCM 6 X 10	10 MM	12.2 MM	2.0 MM	8.0 MM	6.1 MM
10SCM006012	SCM 6 X 12	12 MM	12.2 MM	2.0 MM	8.0 MM	6.1 MM
10SCM008004	SCM 8 X 4	4 MM	14.2 MM	2.5 MM	10.0 MM	8.1 MM
10SCM008006	SCM 8 X 6	6 MM	14.2 MM	2.5 MM	10.0 MM	8.1 MM
10SCM008008	SCM 8 X 8	8 MM	14.2 MM	2.5 MM	10.0 MM	8.1 MM
10SCM008010	SCM 8 X 10	10 MM	14.2 MM	2.5 MM	10.0 MM	8.1 MM
10SCM008012	SCM 8 X 12	12 MM	14.2 MM	2.5 MM	10.0 MM	8.1 MM

