



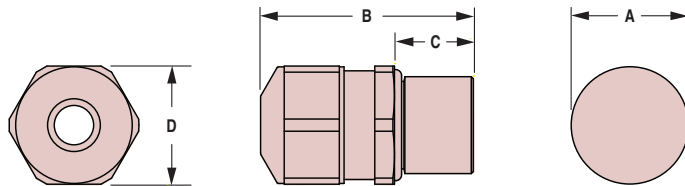
# Heyco®-Tite EMC-2 Brass Liquid Tight Cordgrips

EMC Nickel-Plated Brass with Contact Sleeve

## Metric Hubs

*The Ultimate in Liquid Tight Strain Relief Protection*

CABLE DIA. RANGE				PART NO.	THREAD SIZE	UL or RA	PART DIMENSIONS							
Minimum		Maximum					A Clearance Hole Dia.		B Max. O.A. Length		C Thread Length		D Wrenching Nut Flat Size	
in.	mm.	in.	mm.			in.	mm.	in.	mm.	in.	mm.	in.	mm.	
.14	3,5	.20	5,0	4594	M12 x 1,5	c RA US	.50	12,5	1.26	32,0	.39	10,0	.59	15,0
.20	5,0	.26	6,5	4595	M12 x 1,5	c RA US	.50	12,5	1.26	32,0	.39	10,0	.59	15,0
.24	6,0	.41	10,5	4596	M16 x 1,5	c RA US	.64	16,5	1.38	35,0	.39	10,0	.71	18,0
.31	8,0	.59	15,0	4597	M20 x 1,5	c RA US	.80	20,5	1.46	37,0	.39	10,0	.94	24,0
.49	12,5	.81	20,5	4598	M25 x 1,5	c RA US	1.00	25,4	1.73	44,0	.43	11,0	1.18	30,0
.67	17,0	1.00	25,4	4599	M32 x 1,5	c RA US	1.27	32,3	1.81	46,0	.51	13,0	1.42	36,0



- **Innovative contact spring**, due to strong clamping, virtually guarantees a secure shielded tap connection.
- Contact spring can be precisely positioned due to its clearly defined limit stop, making installation simple.
- Clamping technique ensures the cable can be rotated, pushed and easily dismantled during mounting.
- Ideal for applications where Electromagnetic Compatibility (EMC) is needed.
- Excellent 360° shield contact with contact sleeve due to braided shield which runs into the gland.
- Combination of the sealing insert and the contact socket guarantees a constant contact quality with minimal transfer impedance.
- For use in clearance or threaded holes.

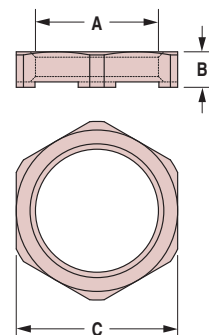
# Heyco®-Tite EMC Brass Locknuts

EMC Nickel-Plated Brass

THREAD SIZE A	PART NO.	DESCRIPTION	PART DIMENSIONS			
			B Thickness		C Wrenching Flat Size	
			in.	mm.	in.	mm.
<b>PG Thread</b>						
PG 7	4671	EMC LN PG 7	.13	3,3	.59	15,0
PG 9	4672	EMC LN PG 9	.13	3,3	.71	18,0
PG 11	4673	EMC LN PG 11	.14	3,5	.83	21,0
PG 13.5	4674	EMC LN PG 13.5	.14	3,5	.94	24,0
PG 16	4675	EMC LN PG 16	.14	3,5	1.02	26,0
PG 21	4676	EMC LN PG 21	.16	4,0	1.26	32,0
PG 29	4677	EMC LN PG 29	.18	4,6	1.61	41,0
<b>Metric Thread</b>						
M8 x 1,25	4681	EMC LN M8	.13	3,3	.43	11,0
M10 x 1,5	4682	EMC LN M10	.13	3,3	.51	13,0
M12 x 1,5	4683	EMC LN M12	.14	3,5	.59	15,0
M16 x 1,5	4684	EMC LN M16	.14	3,5	.75	19,0
M20 x 1,5	4685	EMC LN M20	.16	4,0	.94	24,0
M25 x 1,5	4686	EMC LN M25	.16	4,0	1.18	30,0
M32 x 1,5	4687	EMC LN M32	.20	5,0	1.42	36,0



- Ideal for use with painted surfaces to ensure **EMC integrity**.
- Cutting teeth on locknuts provide optimal shield contact with painted surfaces.
- Nickel-plated finish over brass provides excellent corrosion resistance and durability.



**Material** Nickel-Plated Brass W/TPE Sealing Gland  
**Certifications** Recognized under the Component Program of Underwriters' Laboratories File E51579 to both Canadian and U.S. requirements  
**Temperature Rating** -40°F (-40°C) to 212°F (100°C)  
**IP Rating** IP 68, IP 69K