



Heyco® Rubber Push-In Bumpers

- Rubber bumpers are designed for through hole installation.
- Designed to fit snugly into your opening and not let air, water, etc. pass through.
- Can also be used as feet.
- For Heyco Adhesive-Backed Bumpers see page 75.
- Part Description Key: RGB X-Y-Z where X = Mounting Hole Diameter (inches), Y = Base Diameter (inches), and Z/32 = Base Height (inches).

PANEL DIMENSIONS				PART NO.	DESCRIPTION	MATERIAL	PART DIMENSIONS							
Mounting Hole Dia.		Maximum Thickness					A Base Diameter	B Base Height	C Insert Diameter		D Insert Height			
in.	mm.	in.	mm.	Black	in.	mm.			in.	mm.	in.	mm.	in.	mm.

Type H

.203	5,2	.078	2,0	G3116	RGB 203-812-6	Santoprene	.81	20,6	.19	4,7	.22	5,6	.20	5,1
				G3117	RGB 203-812-8	Santoprene	.81	20,6	.25	6,4				
				G3118	RGB 203-812-12	Santoprene	.81	20,6	.38	9,5				

Type D

.218	5,5	.093	2,4	G2016	RGB 218-406-6	SBR	.41	10,4	.19	4,8	.28	7,1	.09	2,3
.250	6,4	.047	1,2	G2020	RGB 250-500-6	SBR	.50	12,7	.17	4,3	.31	7,9	.19	4,8
.312	7,9	.062	1,6	G2035	RGB 312-375-5	SBR	.38	9,7	.16	4,1	.38	9,7	.16	4,1
.328	8,3	.094	2,4	G2039	RGB 328-846-6	SBR	.85	21,5	.19	4,8	.42	10,7	.27	6,9
.500	12,7	.125	3,2	G2043	RGB 500-1000-6	SBR	1.00	25,4	.19	4,8	.63	16,0	.13	3,3

Type T1

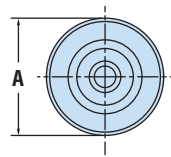
.118	3,0	.098	2,5	G2000	RGB 118-236-4	EPDM	.24	6,1	.12	3,0	.20	5,1	.47	11,9
.177	4,5	.059	1,5	G2006	RGB 177-334-9	SBR	.33	8,4	.30	7,6	.24	6,1	.73	18,5
.218	5,5	.125	3,2	G2017	RGB 218-875-6	SBR	.88	22,4	.17	4,3	.34	8,7	.48	12,2

Type T2*

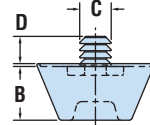
.187	4,7	.047	1,2	G2009	RGB 187-250-6	SBR	.25	6,4	.19	4,7	.23	5,8	.34	8,6
------	-----	------	-----	-------	---------------	-----	-----	-----	-----	-----	-----	-----	-----	-----

Standard color black.

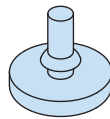
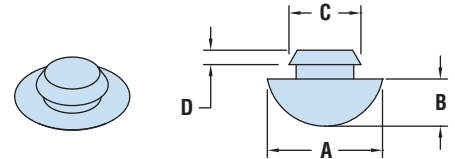
*Designed for pull through applications.



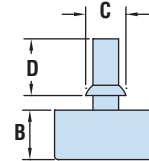
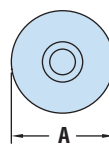
Type H



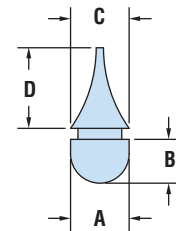
Type D



Type T1



Type T2



Quick
Specs

Material
Temperature Range

TPE, SBR, or EPDM
-40°F (-40°C) to 221°F (105°C)



Heyco® Rubber Push-In Bumpers



PANEL DIMENSIONS				PART NO.	DESCRIPTION	MATERIAL	PART DIMENSIONS							
Mounting Hole Dia. in. mm.	Maximum Thickness in. mm.		Black				A Base Diameter in. mm.		B Base Height in. mm.		C Insert Diameter in. mm.		D Insert Height in. mm.	

Type F1

.156	4,0	.031	0,8	G2004	RGB 156-375-3	SBR	.38	9,7	.09	2,3	.22	5,6	.11	2,8
.250	6,4	.062	1,6	G2024	RGB 250-500-5	SBR	.50	12,7	.16	4,1	.31	7,9	.13	3,3
		.125	3,2	G2027	RGB 250-562-4	SBR	.56	14,2	.13	3,3	.34	8,6		
.281	7,1	.078	2,0	G2031	RGB 281-562-4	SBR	.56	14,2	.13	3,3	.38	9,7	.16	4,1
		.125	3,2	G2032	RGB 281-625-11	SBR	.63	16,0	.34	8,6	.44	11,2	.17	4,3
.500	12,7	.188	4,8	G2044	RGB 500-1000-10	SBR	1.00	25,4	.31	7,9	.69	17,5	.19	4,8

Type F2

.187	4,7	.062	1,6	G2012	RGB 187-375-4	SBR	.38	9,7	.13	3,3	.25	6,4	.13	3,3
.188	4,8	.062	1,6	G2013	RGB 188-500-3	Nitrile	.50	12,7	.09	2,3	.25	6,4	.19	4,8
.250	6,4	.050	1,3	G2021	RGB 250-562-12	SBR	.56	14,2	.38	9,7	.34	8,6	.27	6,9
		.062	1,6	G2022	RGB 250-375-4	SBR	.38	9,7	.13	3,3	.31	7,9	.06	1,5
		.125	3,2	G2023	RGB 250-375-4R*									
.281	7,1	.047	1,2	G2029	RGB 281-500-2	Nitrile	.50	12,7	.06	1,5	.38	9,7	.16	4,1
				G2030	RGB 281-500-4	SBR	.50	12,7	.13	3,3	.38	9,7	.16	4,1
.312	7,9	.047	1,2	G2034	RGB 312-1250-3	SBR	1.25	31,8	.09	2,3	.44	11,2	.08	2,0
		.078	2,0	G2036	RGB 312-875-4	SBR	.88	22,4	.13	3,3	.50	12,7	.06	1,5

Type F3

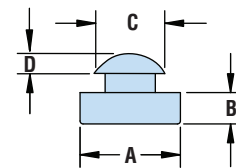
.156	4,0	.109	2,8	G2007	RGB 156-500-2	SBR	.50	12,7	.06	1,5	.25	6,4	.08	2,0
.188	4,8	.047	1,2	G2010	RGB 188-312-4	SBR	.31	7,9	.13	3,3	.25	6,4	.09	2,3
.187	4,7	.050	1,3	G2011	RGB 187-375-8	SBR	.38	9,7	.25	6,4				
.188	4,8	.078	2,0	G2014	RGB 188-338-6**	SBR	.34	8,6	.17	4,3	.25	6,4	.30	7,6
.250	6,4	.047	1,2	G2019	RGB 250-437-6	SBR	.44	11,2	.19	4,8	.31	7,9	.13	3,3
.312	7,9	.094	2,4	G2037	RGB 312-625-8	SBR	.63	16,0	.25	6,4	.38	9,7		

Special Bumpers NEW!

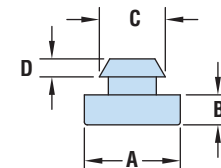
.148	3,8	.125	3,3	G2003	RGB 148-310-1	TPE	.31	7,9	.06	1,5	.17	4,3	.14	3,6
.180	4,6	.062	1,6	G2005	RGB 180-310-3	TPE	.31	7,9	.09	2,3	.24	6,1	.12	3,0
.238	6,0	.075	1,9	G2015	RGB 238-620-6**	TPE	.53	13,4	.18	4,6	.29	7,4	.34	8,6
.281	7,1	.051	1,3	G2028	RGB 281-620-6**	TPE	.62	15,7	.20	5,1	.34	8,6	.16	4,1
.378	9,6	.063	1,6	G2038	RGB 378-500-15**	TPE	.50	12,7	.48	12,2	.50	12,7	.14	3,6

Standard color black. *Part number G2023 has a round insertion head. **Part has a hollow core.

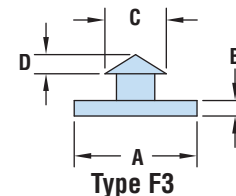
- Rubber bumpers are designed for through hole installation.
- Designed to fit snugly into your opening and not let air, water, etc. pass through.
- Can also be used as feet.
- For Heyco Adhesive-Backed Bumpers see page 75.
- Part Description Key: RGB X-Y-Z where X = Mounting Hole Diameter (inches), Y = Base Diameter (inches), and Z/32 = Base Height (inches).



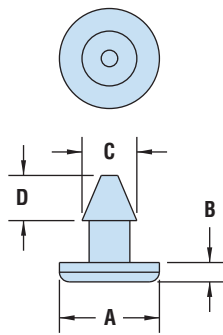
Type F1



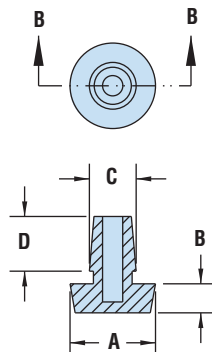
Type F2



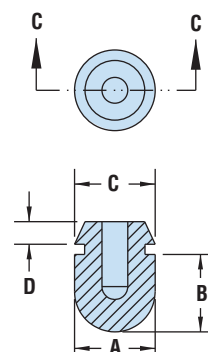
Type F3



G2003 & G2005



G2015 & G2028



G2038

Material	SBR or Nitrile
Temperature Range	-40°F (-40°C) to 221°F (105°C)

Quick Specs



- Bumpers can be used as mounting feet to prevent equipment from sliding or moving.
- Designed for through hole installation.
- 60-70 Durometer Range.
- 29 sizes available that will accommodate various mounting holes and panel thicknesses.
- Provide vibration dampening.

Heyco® Screw-In Rubber Pocket Bumpers

PART DIMENSIONS								BLACK PART NO.		E	
A		B		C		D		No Washer	With Steel Washer	Fastener Hole Dia.*	
Outside Diameter		Overall Height		Recess Diameter		Recess Depth				in.	mm.
in.	mm.	in.	mm.	in.	mm.	in.	mm.				

Type RS

.50	12,7	.25	6,4	.25	6,4	.16	4,0	-	G2201	.13	3,2
.63	15,9	.38	9,5	.25	6,4	.19	4,7	-	G2205		
.75	19,1	.38	9,5	.32	7,9	.19	4,7	-	G2209	.16	4,0
.81	20,6	.72	18,3	.38	9,5	.28	7,1	-	G2213	.22	5,5
1.00	25,4	.81	20,6	.25	6,4	.44	11,1	-	G2217	.13	3,2
		1.00	25,4	.31	7,9	.63	15,9	G2220	G2221	.16	4,0
1.09	27,7	.63	15,9	.44	11,1	.41	10,3	-	G2225	.19	4,7

Type RR

.50	12,7	.25	6,4	.25	6,4	.16	4,0	-	G2229	.09	2,4
.75	19,1	.56	14,3	.38	9,5	.25	6,4	-	G2233	.19	4,7
		.75	19,1	.31	7,9	.25	6,4	-	G2237	.13	3,2
.81	20,6	.81	20,6	.47	11,9	.44	11,1	-	G2241	.25	6,4
.94	23,8	.35	8,9	.38	9,5	.18	4,6	-	G2245	.19	4,7
		.38	9,5	.38	9,5	.22	5,5	G2244	-		
.97	24,6	.34	8,7	.38	9,5	.19	4,7	-	G2249	.22	5,5
1.00	25,4	.44	11,1	.38	9,5	.19	4,7	-	G2253		
		.50	12,7	.50	12,7	.25	6,4	-	G2257		
1.25	31,8	1.25	31,8	.38	9,5	.75	19,1	-	G2267	.25	6,4
		1.88	47,6	.38	9,5	.75	19,1	-	G2271	.19	4,7
1.50	38,1	.63	15,9	.50	12,7	.34	8,7	G2278	G2275		
		.75	19,1	.47	11,9	.50	12,7	-	G2283	.25	6,4
1.70	43,2	1.12	28,4	.60	15,2	.72	18,3	G2286	-	.38	9,6
1.71	44,5	1.66	44,5	.62	15,9	.50	12,7	G2290			
2.50	63,5	1.00	25,4	1.13	28,6	.50	12,7	G2294	-	.38	9,6
		2.00	50,8	1.13	28,6	1.25	28,6	G2296 [†]			
G2298 [†]	G2302										

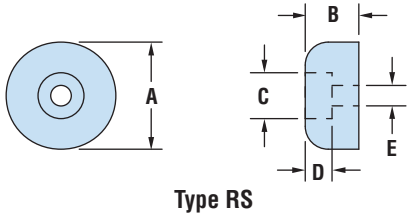
Type S

1.00	25,4	.50	12,7	.36 / .43	9,0 / 10,9	.20 / .16	5,0 / 4,1	-	G2307	.19	4,7
1.50	38,1	.75	19,1	.75	19,1	.38	9,5	-	G2311	.25	6,4

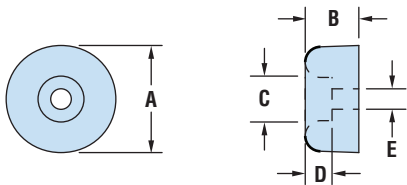
Standard color black. Standard material SBR (Styrene Butadiene Rubber), 60-70 durometer.

*Fastener not included.

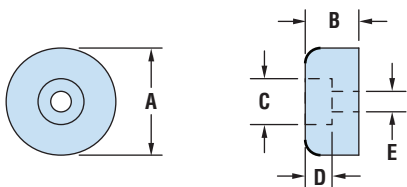
[†]Part Nos. G2296 and G2298 are made from White SBR, 60-70 durometer.



Type RS



Type RR



Type S

Quick Specs

Material SBR
Temperature Range -40°F (-40°C) to 221°F (105°C)

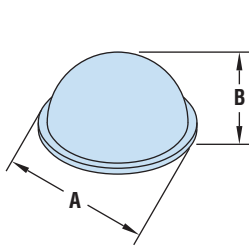


Heyco® Polyurethane Adhesive-Back Bumpers

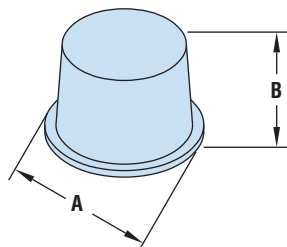
PART DIMENSIONS				PART NO.		DESCRIPTION	Pieces per Pad
A Diameter		B Height		Clear	Black		
in.	mm.	in.	mm.				
HSA Series Hemi							
.25	6,4	.06	1,6	N040	N140	HBA 250-06	578
.31	7,9	.09	2,3	N027	N127	HBA 312-09	450
.34	8,6	.09	2,3	N007	N107	HBA 335-09	
.38	9,7	.15	3,8	N012	N112	HBA 375-15	200
.44	11,2	.20	5,1	N002	N102	HBA 440-20	242
.62	15,7	.31	7,9	N015	N115	HBA 620-31	128
.70	17,8	.38	9,7	N008	N108	HBA 700-38	98
CBA Series Cylinder							
.38	9,7	.19	4,8	N035	N135	CBA 370-19	200
.50	12,7	.06	1,5	N005	N105	CBA 500-06	200
		.14	3,6	N001	N101	CBA 500-14	
		.25	6,4	N006	N106	CBA 500-25	
.65	16,5	.40	10,2	N011	N111	CBA 650-40	128
.78	19,8	.20	5,1	N041	N141	CBA 780-20	84
.81	20,6	.12	3,0	N024	N124	CBA 810-12	72
CDBA Series Pocket							
.50	12,7	.14	3,6	N018	N118	CDBA 500-14	200
.88	22,4	.40	10,2	N017	N117	CDBA 880-40	72
1.81	46,0	.60	15,2	N030	N130	CDBA 1810-60	1
TBA Series Square or Tapered							
.50	12,7	.12	3,0	N009	N109	TBA 5050-12	200
.81	20,6	.30	7,6	N019	N119	TBA 8181-30	98

Standard colors clear and black. For white, gray or brown consult Heyco.

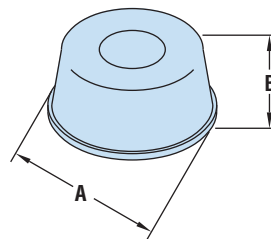
- Quick and easy installation—simply peel off backing and press into place. With no holes to drill, and no screws or rivets needed, adhesive backed bumpers will save you time and money.
- Bumpers can be attached to a wide variety of surfaces; aluminum, ceramic, formica, glass, painted surfaces, polyethylene, polypropylene, vinyl, and steel.
- Adhesive backed bumpers are nonmarking, nonstaining, skid, and scratch resistant.
- Surface must be clean, dry, and free of grease, oil, and other common solvents to obtain maximum adhesion. Clean surfaces with low strength solvents such as Isopropyl Alcohol or Heptane.
- Bumpers have a rubber-based pressure sensitive adhesive with an end use temperature of 0°F (-18°C) to 180°F (82°C).
- Standard colors clear and black. White, gray and brown available, please consult Heyco.



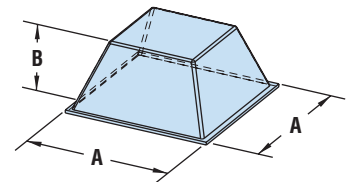
HSA-Hemi



CBA-Cylinder



CDBA-Pocket



TBA-Square or Tapered

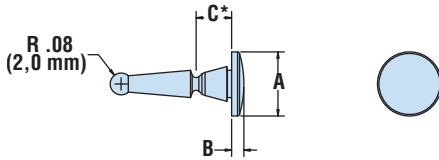
Material	Polyurethane
Certifications	Recognized under the Component Program of Underwriters' Laboratories File E196663
Flammability Rating	HB
Temperature Range	0°F (-18°C) to 180°F (82°C)

Quick Specs



Heyco® Break-Away Bumpers

- Part Description Key: RGBA X-Y-Z where X = Mounting Hole Diameter (inches), Y = Base Diameter (inches), and Z = Durometer.



G2312-G2314

PANEL DIMENSIONS				PART NO.	DESC.	MATERIAL	PART DIMENSIONS					
Mounting Hole Dia.		Thickness					A Base Diameter	B Base Height		C Insert Height*		
in.	mm.	in.	mm.	Black				in.	mm.	in.	mm.	
RGBA Series												
.187-.197	4,7-5,0	.02	0,5	G2312	RGBA 19-39-50	Silicone Rubber 50	.39	10,0	.08	2,0	.17	4,3
.197-.212	5,0-5,4	.02-.03	0,6-0,8	G2313	RGBA 20-47-40	Silicone Rubber 40	.47	12,0	.09	2,3	.26	6,5
				G2314	RGBA 20-47-50	Silicone Rubber 50						

Standard color black. * Approximate: after Lead Stem is broken off.



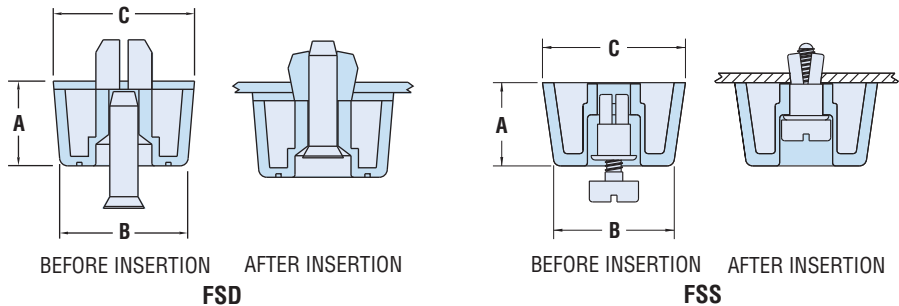
Heyco® Feet of Strength

Feet with Drive Pin

PART DIMENSIONS					PANEL DIMENSIONS				PART NO. Black	DESCRIPTION			
A Overall Height	B Top Diameter	C Bottom Diameter		Mounting Hole Diameter	Thickness Range								
in.	mm.	in.	mm.	in.	mm.	in.	mm.	Black					
FSD / FSS * Series													
.20	5,0	.98	25,0	.91	23,0	.299	7,6	.03	0,8	.06	1,5	2543	FSD 20-30-06
		.79	20,0	.71	18,0	.303	7,7	.03	0,8	.06	1,5	2537	FSD 20-32-06
.24	6,0	.83	21,0	.79	20,0	.303	7,7	.20	5,0	.32	8,0	2544	FSD 24-31-32
						.200	5,0	.04	1,0	.09	2,3	2536*	FSS 39-20-09
.39	10,0	.79	20,0	.71	18,0	.310	7,8	.03	0,8	.06	1,5	2545	FSD 39-30-06
						.320	8,1	.03	0,8	.06	1,5	2548	FSD 39-32-06
.47	12,0	.79	20,0	.71	18,0	.320	8,1	.02	0,5	.05	1,2	2547	FSD 47-32-05
						.200	5,0	.04	1,0	.09	2,3	2538 *	FSS 55-20-09
.55	14,0	.95	24,0	.79	20,0	.200	5,0	.04	1,0	.09	2,3	2549	FSD 59-32-07
		.79	20,0	.71	18,0	.320	8,1	.03	0,8	.07	1,8	2539 *	FSS 59-20-06
.71	18,0	.79	20,0	.71	18,0	.200	5,0	.02	0,5	.06	1,5	2551	FSD 71-32-05
						.320	8,1	.02	0,5	.05	1,2		

Standard color black. * Slotted Screw replaces Drive Pin.

- Molded of thermoplastic elastomer or polypropylene and elastomer blend for **skid and vibration resistance**.
- Two piece construction comes preassembled.
- To install, simply insert into the mounting hole, then press pin to secure.
- Part Description Key: FSD/FSS XX-YY-ZZ where XX = Overall Height (inches), YY = Mounting Hole Diameter (inches) and ZZ = Maximum Panel Thickness (inches)



Quick Specs

Material	RGBA	Silicone Rubber
Temperature Range		-40°F (-40°C) to 302°F (150°C)
Material	FSD	Thermoplastic elastomer or Polypropylene & elastomer



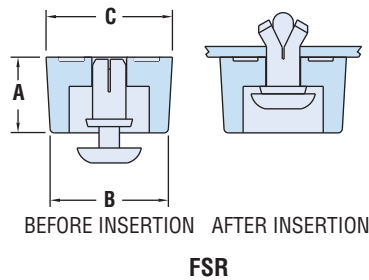
Heyco® Feet of Strength

Feet with Push Rivet

PART DIMENSIONS						PANEL DIMENSIONS				PART NO. Black	DESCRIPTION				
A Overall Height	B Top Diameter		C Bottom Diameter		Mounting Hole Diameter	Thickness Range Minimum		Maximum							
in. mm.	in. mm.	in. mm.	in. mm.	in. mm.		in. mm.	in. mm.	in. mm.	in. mm.	in. mm.					
FSR Series															
.16	4,0	.43	10,8	.39	10,0	.142	3,6	.02	0,5	.05	1,2	2519	FSR 16-14-05		
								.05	1,2	.08	2,0	2520	FSR 16-14-08		
								.06	1,5	.10	2,5	2521	FSR 16-14-10		
								.10	2,5	.14	3,5	2550	FSR 16-14-14		
.17	4,2	.83	21,0	.79	20,0	.165	4,2	.03	0,8	.07	1,8	2522	FSR 17-17-07		
								.07	1,8	.11	2,8	2523	FSR 17-17-11		
								.11	2,9	.15	3,7	2524	FSR 17-17-15		
								.15	3,8	.19	4,8	2525	FSR 17-17-19		
.22	5,5	.56	14,2	.53	13,5	.122	3,1	.03	0,8	.07	1,8	2517	FSR 22-12-07		
								.07	1,8	.11	2,8	2518	FSR 22-12-11		
.24	6,0	.59	15,0	.55	14,0	.165	4,2	.02	0,6	.04	1,0	2500	FSR 24-17-04		
										.04	1,0	.08	2,0	2501	FSR 24-17-08
										.08	2,0	.12	3,1	2502	FSR 24-17-12
						.204	5,2	.03	0,8	.05	1,2	2506	FSR 24-21-05		
										.05	1,3	.09	2,3	2507	FSR 24-21-09
										.03	0,8	.07	1,8	2526	FSR 241-17-07
.24	6,0	.83	21,0	.79	20,0	.165	4,2	.08	1,9	.11	2,8	2527	FSR 241-17-11		
										.11	2,9	.16	4,0	2528	FSR 241-17-16
										.01	0,3	.03	0,8	2575	FSR 31-17-03
.31	8,0	.83	21,0	.79	20,0	.165	4,2	.03	0,8	.08	2,0	2529	FSR 31-17-08		
										.08	2,1	.12	3,1	2530	FSR 31-17-12
										.04	1,0	.08	2,0	2532	FSR 35-17-08
.35	9,0	.59	15,0	.55	14,0	.165	4,2	.08	2,0	.12	3,1	2533	FSR 35-17-12		

Standard color black.

- Require only fingertip pressure for fast, easy installation.
- May be released from inside the panel.
- Multiple sizes range in height from .217" (5,5 mm) to .354" (9,0 mm).
- Part Description Key: FSR XX-YY-ZZ where XX = Overall Height (inches), YY = Mounting Hole Diameter (inches) and ZZ = Maximum Panel Thickness (inches)



Material: Thermoplastic Rubber (TPR)
 Flammability Rating: 94-HB
 Temperature Range: -30°F (-34°C) to 250°F (121°C)

Quick Specs



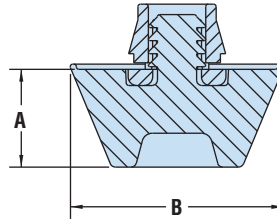
Heyco® Feet of Strength

Feet with Snap-In Locking Fingers

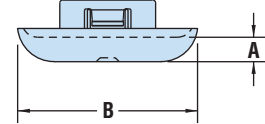
- **Snap-in design** eliminates the installation labor needed for a screw or a rivet saving assembly time and equipment.
- Superior mounting approach as the Snap-In Bumper mounts securely into the panel while providing a strong mechanical support to the bumper when used as a mounting foot for electronic enclosures.
- Superior hold versus adhesive backed or screw/rivet bumpers.
- Designed to fit snugly into panel and is dust tight.
- Snap-In Bumpers are skid and scratch resistant and will not mark or stain surfaces.
- Lock firmly into enclosure.
- Quick and easy installation.
- Suitable for metal or plastic panels.
- Bumper constructed of EPDM rubber.
- Part Description Key: FSSI XX-YY-ZZ where
XX = Overall Height (inches),
YY = Mounting Hole Diameter (inches) and ZZ = Maximum Panel Thickness (inches)

PART DIMENSIONS				PANEL DIMENSIONS				PART NO. Black	DESCRIPTION		
A Overall Height		B Top Diameter		Mounting Hole Diameter	Thickness Range						
in.	mm.	in.	mm.		in.	mm.	in.	mm.			
FSSI Series											
.19	4,7	.812	20,6	.312	7,9	.03	0,8	.06	1,6	G3016	FSSI 19-31-06
.25	6,3	.812	20,6	.312	7,9	.03	0,8	.06	1,6	G3017	FSSI 25-31-06
.38	9,5	.812	20,6	.312	7,9	.03	0,8	.06	1,6	G3018	FSSI 38-31-06

Standard color black.



Snap-In



Low Profile Snap-In

Low Profile Feet with Snap-In Locking Fingers

- **The low profile snap-in design** requires no screws or adhesives to securely mount into a metal or plastic base.
- The TPE top provides a durable, non-skid surface.
- Snap-In Feet ensure a liquid tight seal and can be used for indoor or outdoor applications.
- Part Description Key: LTBP XXX-YYY where
XXX = Mounting Hole Diameter (inches) and YYY = Maximum Panel Thickness (inches)



PART DIMENSIONS				PANEL DIMENSIONS				PART NO. Black	DESCRIPTION		
A Overall Height		B Top Diameter		Mounting Hole Diameter	Thickness Range						
in.	mm.	in.	mm.		in.	mm.	in.	mm.			
LTBP Series											
.13	3,2	.55	14,0	.500	12,7	.02	0,5	.06	1,6	C2008	LTBP 500-063
						.06	1,6	.25	6,4	C2058	LTBP 500-250
		.66	16,8	.625	15,9	.02	0,5	.06	1,6	C2012	LTBP 625-063
						.06	1,6	.25	6,4	C2062	LTBP 625-250
		.78	19,8	.750	19,1	.02	0,5	.06	1,6	C2016	LTBP 750-063
						.06	1,6	.25	6,4	C2066	LTBP 750-250
		.90	22,9	.875	22,2	.02	0,5	.06	1,6	C2020	LTBP 875-063
						.06	1,6	.25	6,4	C2070	LTBP 875-250
		1.05	26,7	1.000	25,4	.02	0,5	.06	1,6	C2022	LTBP 1000-063
						.06	1,6	.25	6,4	C2072	LTBP 1000-250
		1.16	29,5	1.093	27,8	.02	0,5	.06	1,6	C2024	LTBP 1093-063
						.06	1,6	.25	6,4	C2074	LTBP 1093-250

Standard color black.

Quick Specs

Material	FSSI Series: EPDM Rubber insert, Nylon 6/6 body LTBP Series: Nylon 6/6 and TPE co-molding
Flammability Rating	HB
Temperature Range	-40°F (-40°C) to 221°F (105°C)
IP Rating	IP 67/68 (LTBP only)