

HEYCO

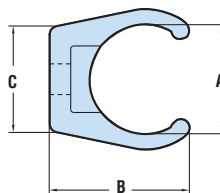


Heyco-Flex™ Mounting Brackets

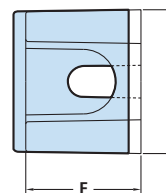
- For mounting Heyco-Flex Conduit or Tubing securely into place, vertically or horizontally. See pages 2-1, 2-2, and 2-16.
- Only fingertip pressure is required to snap conduit or tubing into bracket.
- Low profile design for space savings and pleasing appearance.
- Recommended distance between brackets at intervals not greater than 3 feet (1m) as required by Article 351-27 of 1996 NEC.
- Use one standard #10 (4-5M) screw for attaching bracket to panel (screw not included).
- Resist salt water, weak acids, gasoline, alcohol, oil, grease, and common solvents.

| FITS CONDUIT/ TUBING SIZE | PART NO. | | DESCRIPTION | PART DIMENSIONS | | | | | | | | | |
|------------------------------------|----------|------|-------------|--------------------|------|---------------|------|---------------|------|---------------------|------|--------------|------|
| | Black | Gray | | A | | B | | C | | D | | E | |
| | | | | Inside Dia. in. | mm. | Length in. | mm. | Height in. | mm. | Outside Dia. in. | mm. | Width in. | mm. |
| 3/8 | 1025 | 1026 | HFB 3/8 | .664 | 16,9 | .912 | 23,2 | .715 | 18,2 | .903 | 22,9 | .750 | 19,1 |
| 1/2 | 1027 | 1028 | HFB 1/2 | .788 | 20,0 | 1.074 | 27,3 | .710 | 18,0 | 1.056 | 26,8 | | |
| 3/4 | 1029 | 1030 | HFB 3/4 | 1.050 | 26,7 | 1.269 | 32,2 | .670 | 17,0 | 1.306 | 33,2 | | |
| 1 | 1031 | 1032 | HFB 1 | 1.240 | 31,5 | 1.520 | 38,6 | .840 | 21,3 | 1.530 | 38,9 | | |

Standard color black or gray.



Dimensions
excluding draft



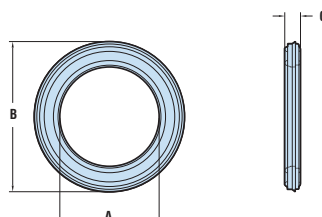
Heyco® Sealing Washers



- For use with Heyco-Flex fittings.
- Liquid tight, dust tight, and oil tight at enclosure.
- Suitable for wet locations requiring a separate gasket between the box and fitting.
- Also suitable for other panel sealing applications.
- Easy to install since washers seal off on the perimeter, not on the connector threads.
- Special double sealing ridges compensate for minor unevenness at enclosure.

| Will Fit These Electrical Fitting NPT Trade Sizes | PART NO. Black | DESCRIPTION | PART DIMENSIONS | | | | | |
|---|-------------------|-------------|-------------------------|------|--------------------------|------|----------------|-----|
| | | | A Inside Diameter | | B Outside Diameter | | C Thickness | |
| | | | in. | mm. | in. | mm. | in. | mm. |
| 1/4 | 3258 | SW 1/4 | .54 | 13,7 | .80 | 20,2 | .13 | 3,2 |
| 3/8 | 3259 | SW 3/8 | .67 | 17,0 | 1.01 | 25,5 | .13 | 3,2 |
| 1/2 | 3260 | SW 1/2 | .85 | 21,6 | 1.24 | 31,5 | .13 | 3,2 |
| 3/4 | 3261 | SW 3/4 | 1.03 | 26,2 | 1.50 | 38,1 | .14 | 3,4 |
| 1 | 3262 | SW 1 | 1.28 | 32,5 | 1.77 | 45,0 | .18 | 4,4 |
| 1-1/4 | 3264 | SW 1-1/4 | 1.66 | 42,2 | 2.16 | 54,8 | .16 | 4,1 |
| 1-1/2 | 3265 | SW 1-1/2 | 1.86 | 47,2 | 2.44 | 62,0 | .16 | 4,1 |
| 2 | 3257 | SW 2 | 2.32 | 58,9 | 2.93 | 74,4 | .18 | 4,6 |

Standard color black.



*Quick
Specs*

Mounting Brackets

| | |
|----------------------------|--|
| Material | Nylon 6/6 |
| Flammability Rating | 94V-2 |
| Material Temperature Index | 257°F (125°C) Max Temp on the part shall not exceed 221°F (105°C) |

Sealing Washers

| | |
|----------------------------|--|
| Material | Thermoplastic Elastomer |
| Flammability Rating | 94V-0 |
| Material Temperature Index | 257°F (125°C) Max Temp on the part shall not exceed 221°F (105°C) |