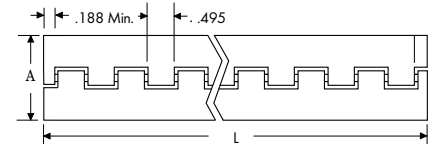
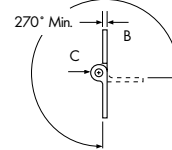


# MILITARY HARDWARE

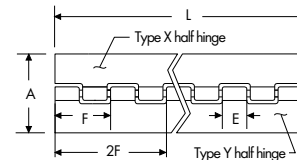
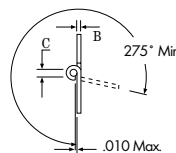
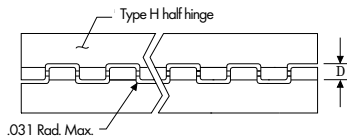


## MS20001 SERIES CONTINUOUS HINGES; TYPE 2024-T3511 EXTRUDED ALUMINUM

Specify	For
P	Anodized per Mil-A-8625, Type II
C	Alodine per Mil-DTL-5541
A	Aluminum Alloy 7075-T 73511



Dash No.	A Open Width	B - Leaf Thickness		C Pin Diameter
		Maximum	Minimum	
-2	1.062	.056	.044	.090
-3	1.250	.056	.044	.090
-4	1.500	.056	.044	.090
-5	1.750	.056	.044	.090
-6	2.000	.056	.044	.090
-8	2.000	.076	.064	.180
-9	2.500	.056	.044	.090
-10	2.750	.056	.044	.090
-12	3.375	.115	.103	.090
-14	3.719	.163	.149	.129
-16	3.938	.210	.196	.180



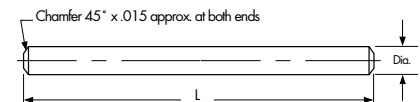
## MS20257 SERIES CONTINUOUS HINGES

Dash No.			A	B Leaf Thickness		C Hole Diameter		D Slot Depth		E	F	Pin Diameter Cor. Res.
Alum. Alloy	Unano- dized	Ano- dized	Open Width	Alum. Alloy	Cor. Res. Steel	Alum. Alloy	Cor. Res. Steel	Alum. Alloy	Cor. Res. Steel	Loop	Pitch	Steel
P1		P1	.75	.032	.031	.066	.066	.169	.166	.490	1.000	.063
2		P2	1.06	.040	.037	.093	.093	.220	.211	.490	1.000	.090
3		P3	1.25	.040	.050	.093	.121	.220	.278	.490	1.000	.118
4		P4	1.50	.040	.062	.093	.121	.220	.314	.490	1.000	.118
5		P5	2.00	.051	.062	.093	.183	.253	.376	.490	1.000	.180
6		P6	2.00	.064	.062	.183	.183	.382	.376	1.990	4.047	.180

## MS20253\* AND A-A-55486 HINGE PINS FOR MS20257 AND MS20001 SERIES CONTINUOUS HINGES

Dash No.	Cadmium plated		Passivated	Diameter
	P1	P2		
-P1		-1		.062
-P2		-2		.089
-P3		-3		.117
-P4		-4		.179
-P5		-5		.129

1. Use cadmium-plated, corrosion-resistant steel with aluminum alloy hinge.
2. Use passivated corrosion-resistant steel pin with corrosion-resistant steel hinge.
3. Normally supplied 72" long, i.e., MS20253-7200.
4. Add L length to denote solid film lubricant.



Note: Whole hinges supplied with pins; half hinges supplied without pins. All parts are stocked 72" long.  
\* Now AS-20253, but no change to MS-20253 part numbers.

