



Royal Ultra-Precision ER Collets



Royal Ultra-Precision ER Collets are extremely accurate. Runout is guaranteed to 0.0002" TIR or better. Wide gripping range containing 16 slots, providing a larger gripping range than other brands. Manufactured from high-grade alloy steel. All collets are hardened and ground for long life. A collet that exactly matches the cutting tool diameter improves grip force, accuracy, and rigidity, resulting in extended tool life and better surface finishes.

Item No.	Dia.	Range	Pack Qty.
ER16			
RY-53020	1/16	.062 - .043	1
RY-53022	3/32	.093 - .054	1
RY-53024	1/8	.125 - .086	1
RY-53026	9/32	.156 - .117	1
RY-53028	3/16	.187 - .148	1
RY-53030	7/32	.218 - .179	1
RY-53032	1/4	.250 - .211	1
RY-53034	9/32	.281 - .242	1
RY-53036	5/16	.312 - .273	1
RY-53038	11/32	.343 - .304	1
RY-53040	3/8	.375 - .336	1
ER32			
RY-53140	3/32	.093 - .054	1
RY-53144	5/32	.156 - .117	1
RY-53146	3/16	.187 - .148	1
RY-53148	7/32	.218 - .179	1
RY-53150	1/4	.250 - .211	1
RY-53152	9/32	.281 - .242	1
RY-53154	5/16	.312 - .273	1
RY-53156	11/32	.343 - .304	1
RY-53158	3/8	.375 - .336	1
RY-53160	13/32	.406 - .367	1
RY-53162	7/16	.437 - .398	1
RY-53164	15/32	.468 - .429	1
RY-53166	1/2	.500 - .461	1
RY-53168	17/32	.531 - .492	1
RY-53170	9/16	.562 - .523	1
RY-53172	19/32	.593 - .554	1
RY-53174	5/8	.625 - .586	1
RY-53176	21/32	.656 - .617	1
RY-53178	11/16	.687 - .648	1
RY-53180	23/32	.718 - .679	1
RY-53182	3/4	.750 - .711	1

Tool Storage Drill Dispensers, Indexes and Stands



Dispenser



Index



Stand

Dispensers feature one piece drawer slides for long life. Stackable. Index panels stand upright. Fold down for compact storage. Stands can be hung or used on a bench. Cutting tools are not included.

Item No.	Type	Description	Pack Qty.
HTC-13000	Dispenser	1/16 to 1/2 by 64ths	1
HM-29	Index	1/16 to 1/2 by 64ths	1
HTC-11900	Stand	1/16 to 1/2 by 64ths	1
HM-60	Index	1 to 60 Wire	1

Lyndex Precision Collets Heat Treated - Internally and Externally Threaded 5C Round Collets



Item No.	Size	Pack Qty.
500-008	1/8	1
500-012	3/16	1
500-013	13/64	1
500-016	1/4	1
500-020	5/16	1
500-022	11/32	1
500-028	7/16	1
500-030	15/32	1
500-032	1/2	1
500-048	3/4	1
500-056	7/8	1
500-064	1	1

Lyndex Precision Collets Heat Treated - Internally and Externally Threaded R8 Round Collets



Item No.	Size	Pack Qty.
800-008	1/8	1
800-010	9/32	1
800-012	3/16	1
800-016	1/4	1
800-020	5/16	1
800-024	3/8	1
800-028	7/16	1
800-032	1/2	1
800-040	5/8	1
800-048	3/4	1
800-056	7/8	1
800-064	1	1

Lyndex Precision Collets 5C Emergency Collets



Item No.	Size	Material	Pack Qty.
560-001S	1/16	Steel	1
560-001B	Pilot Hole	Brass	1

Collet Wrench



Simplifies installing and removing collets in CNC lathes. One piece construction with hard coat anodize finish.

Item No.	Description	Pack Qty.
MB-1005C	5C Collet Wrench	1

R8 Collet Caddy®

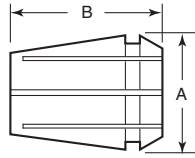
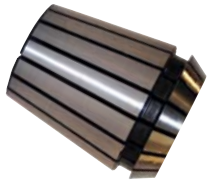


The Collet Caddy® fits Bridgeport style mills. Stores up to 16 R8 collets, arbors or specialty cutters. Keeps collets up out of the chip path, yet within easy reach of operation for improved efficiency and productivity. Installs in seconds. Includes rotating rack, mounting bracket and hardware.

Item No.	Description	Pack Qty.
IR-8	R8 Collet Caddy	1



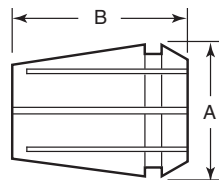
Ultra Precision ER



A wide clamping range offers fewer tool changes based on collet ID ranges and a low cost per set that covers a wide array of sizes. Can be used on drilling, milling, tapping, and reaming applications and are interchangeable with all brands of ER and ESX type collets. These long life collets are made of high grade spring steel, hardened and precision ground.

Item No.	Briney	Collet Series	O.D. A	Lgth. B	I.D.	I.D. Range	Pack Qty.	Item No.	Briney	Collet Series	O.D. A	Lgth. B	I.D.	I.D. Range	Pack Qty.
BRIN-5	BR11-1/16	ER11	.453	.709	1/16	.062 - .043	1	BRIN-265	BR25-5/8	ER25	1.024	1.378	5/8	.625 - .586	1
BRIN-10	BR11-3/32	ER11	.453	.709	3/32	.093 - .054	1	BRIN-270	BR32-3/32	ER32	1.299	1.575	7/32	.093 - .054	1
BRIN-15	BR11-1/8	ER11	.453	.709	1/8	.125 - .086	1	BRIN-275	BR32-1/8	ER32	1.299	1.575	1/8	.125 - .086	1
BRIN-20	BR11-5/32	ER11	.453	.709	5/32	.156 - .117	1	BRIN-280	BR32-5/32	ER32	1.299	1.575	5/32	.156 - .117	1
BRIN-25	BR11-3/16	ER11	.453	.709	3/16	.187 - .148	1	BRIN-285	BR32-3/16	ER32	1.299	1.575	3/16	.187 - .148	1
BRIN-30	BR11-7/32	ER11	.453	.709	7/32	.218 - .179	1	BRIN-290	BR32-7/32	ER32	1.299	1.575	7/32	.218 - .179	1
BRIN-35	BR11-1/4	ER11	.453	.709	1/4	.250 - .211	1	BRIN-295	BR32-1/4	ER32	1.299	1.575	1/4	.250 - .211	1
BRIN-40	BR16-1/16	ER16	.669	1.063	1/16	.062 - .043	1	BRIN-300	BR32-9/32	ER32	1.299	1.575	9/32	.281 - .242	1
BRIN-45	BR16-3/32	ER16	.669	1.063	3/32	.093 - .054	1	BRIN-305	BR32-5/16	ER32	1.299	1.575	5/16	.312 - .273	1
BRIN-50	BR16-1/8	ER16	.669	1.063	1/8	.125 - .086	1	BRIN-310	BR32-11/32	ER32	1.299	1.575	11/32	.343 - .304	1
BRIN-55	BR16-5/32	ER16	.669	1.063	5/32	.156 - .117	1	BRIN-315	BR32-3/8	ER32	1.299	1.575	3/8	.375 - .336	1
BRIN-60	BR16-3/16	ER16	.669	1.063	3/16	.187 - .148	1	BRIN-320	BR32-13/32	ER32	1.299	1.575	13/32	.406 - .367	1
BRIN-65	BR16-7/32	ER16	.669	1.063	7/32	.218 - .179	1	BRIN-325	BR32-7/16	ER32	1.299	1.575	7/16	.437 - .398	1
BRIN-70	BR16-1/4	ER16	.669	1.063	1/4	.250 - .211	1	BRIN-330	BR32-15/32	ER32	1.299	1.575	15/32	.468 - .429	1
BRIN-75	BR16-9/32	ER16	.669	1.063	9/32	.281 - .242	1	BRIN-335	BR32-1/2	ER32	1.299	1.575	1/2	.500 - .461	1
BRIN-80	BR16-5/16	ER16	.669	1.063	5/16	.312 - .273	1	BRIN-340	BR32-17/32	ER32	1.299	1.575	17/32	.531 - .492	1
BRIN-85	BR16-11/32	ER16	.669	1.063	11/32	.343 - .304	1	BRIN-345	BR32-9/16	ER32	1.299	1.575	9/16	.562 - .523	1
BRIN-90	BR16-3/8	ER16	.669	1.063	3/8	.375 - .336	1	BRIN-350	BR32-19/32	ER32	1.299	1.575	19/32	.593 - .554	1
BRIN-95	BR16-13/32	ER16	.669	1.063	13/32	.406 - .367	1	BRIN-355	BR32-5/8	ER32	1.299	1.575	5/8	.625 - .586	1
BRIN-100	BR20-1/16	ER20	.827	1.220	1/16	.062 - .043	1	BRIN-360	BR32-21/32	ER32	1.299	1.575	21/32	.656 - .617	1
BRIN-105	BR20-3/32	ER20	.827	1.220	3/32	.093 - .054	1	BRIN-365	BR32-11/16	ER32	1.299	1.575	11/16	.687 - .648	1
BRIN-110	BR20-1/8	ER20	.827	1.220	1/8	.125 - .086	1	BRIN-370	BR32-23/32	ER32	1.299	1.575	23/32	.718 - .679	1
BRIN-115	BR20-5/32	ER20	.827	1.220	5/32	.156 - .117	1	BRIN-375	BR32-3/4	ER32	1.299	1.575	3/4	.750 - .711	1
BRIN-120	BR20-3/16	ER20	.827	1.220	3/16	.187 - .148	1	BRIN-380	BR40-1/8	ER40	1.614	1.811	1/8	.125 - .086	1
BRIN-125	BR20-7/32	ER20	.827	1.220	7/32	.218 - .179	1	BRIN-385	BR40-5/32	ER40	1.614	1.811	5/32	.156 - .117	1
BRIN-130	BR20-1/4	ER20	.827	1.220	1/4	.250 - .211	1	BRIN-390	BR40-3/16	ER40	1.614	1.811	3/16	.187 - .148	1
BRIN-135	BR20-9/32	ER20	.827	1.220	9/32	.281 - .242	1	BRIN-395	BR40-7/32	ER40	1.614	1.811	7/32	.218 - .179	1
BRIN-140	BR20-5/16	ER20	.827	1.220	5/16	.312 - .273	1	BRIN-400	BR40-1/4	ER40	1.614	1.811	1/4	.250 - .211	1
BRIN-145	BR20-11/32	ER20	.827	1.220	11/32	.343 - .304	1	BRIN-405	BR40-9/32	ER40	1.614	1.811	9/32	.281 - .242	1
BRIN-150	BR20-3/8	ER20	.827	1.220	3/8	.375 - .336	1	BRIN-410	BR40-5/16	ER40	1.614	1.811	5/16	.312 - .273	1
BRIN-155	BR20-13/32	ER20	.827	1.220	13/32	.406 - .367	1	BRIN-415	BR40-11/32	ER40	1.614	1.811	11/32	.343 - .304	1
BRIN-160	BR20-7/16	ER20	.827	1.220	7/16	.437 - .398	1	BRIN-420	BR40-3/8	ER40	1.614	1.811	3/8	.375 - .336	1
BRIN-165	BR20-15/32	ER20	.827	1.220	15/32	.468 - .429	1	BRIN-425	BR40-13/32	ER40	1.614	1.811	13/32	.406 - .367	1
BRIN-170	BR20-1/2	ER20	.827	1.220	1/2	.500 - .461	1	BRIN-430	BR40-7/16	ER40	1.614	1.811	7/16	.437 - .398	1
BRIN-175	BR25-1/16	ER25	1.024	1.378	1/16	.062 - .043	1	BRIN-435	BR40-15/32	ER40	1.614	1.811	15/32	.468 - .429	1
BRIN-180	BR25-3/32	ER25	1.024	1.378	3/32	.093 - .054	1	BRIN-440	BR40-1/2	ER40	1.614	1.811	1/2	.500 - .461	1
BRIN-185	BR25-1/8	ER25	1.024	1.378	1/8	.125 - .086	1	BRIN-445	BR40-17/32	ER40	1.614	1.811	17/32	.531 - .492	1
BRIN-190	BR25-5/32	ER25	1.024	1.378	5/32	.156 - .117	1	BRIN-450	BR40-9/16	ER40	1.614	1.811	9/16	.562 - .523	1
BRIN-195	BR25-3/16	ER25	1.024	1.378	3/16	.187 - .148	1	BRIN-455	BR40-19/32	ER40	1.614	1.811	19/32	.593 - .554	1
BRIN-200	BR25-7/32	ER25	1.024	1.378	7/32	.218 - .179	1	BRIN-460	BR40-5/8	ER40	1.614	1.811	5/8	.625 - .586	1
BRIN-205	BR25-1/4	ER25	1.024	1.378	1/4	.250 - .211	1	BRIN-465	BR40-21/32	ER40	1.614	1.811	21/32	.656 - .617	1
BRIN-210	BR25-9/32	ER25	1.024	1.378	9/32	.281 - .242	1	BRIN-470	BR40-11/16	ER40	1.614	1.811	11/16	.687 - .648	1
BRIN-215	BR25-5/16	ER25	1.024	1.378	5/16	.312 - .273	1	BRIN-475	BR40-23/32	ER40	1.614	1.811	23/32	.718 - .679	1
BRIN-220	BR25-11/32	ER25	1.024	1.378	11/32	.343 - .304	1	BRIN-480	BR40-3/4	ER40	1.614	1.811	3/4	.750 - .711	1
BRIN-225	BR25-3/8	ER25	1.024	1.378	3/8	.375 - .336	1	BRIN-485	BR40-25/32	ER40	1.614	1.811	25/32	.748 - .787	1
BRIN-230	BR25-13/32	ER25	1.024	1.378	13/32	.406 - .367	1	BRIN-490	BR40-13/16	ER40	1.614	1.811	13/16	.787 - .826	1
BRIN-235	BR25-7/16	ER25	1.024	1.378	7/16	.437 - .398	1	BRIN-495	BR40-27/32	ER40	1.614	1.811	27/32	.826 - .866	1
BRIN-240	BR25-15/32	ER25	1.024	1.378	15/32	.468 - .429	1	BRIN-500	BR40-7/8	ER40	1.614	1.811	7/8	.866 - .905	1
BRIN-245	BR25-1/2	ER25	1.024	1.378	1/2	.500 - .461	1	BRIN-505	BR40-29/32	ER40	1.614	1.811	29/32	.906 - .945	1
BRIN-250	BR25-17/32	ER25	1.024	1.378	17/32	.531 - .492	1	BRIN-510	BR40-15/16	ER40	1.614	1.811	15/16	.905 - .944	1
BRIN-255	BR25-9/16	ER25	1.024	1.378	9/16	.562 - .523	1	BRIN-515	BR40-31/32	ER40	1.614	1.811	31/32	.944 - .984	1
BRIN-260	BR25-19/32	ER25	1.024	1.378	19/32	.593 - .554	1	BRIN-520	BR40-1	ER40	1.614	1.811	1	.984 - 1.02	1

Ultra Precision ER Collet Sets

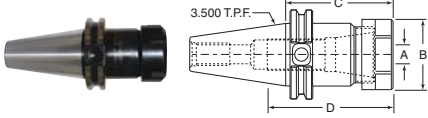


Item No.	Briney	Collect Series	O.D. A	Lgth. B	I.D. Range	Pieces Per Set	Range of Collet Set	Pack Qty.
BRIN-525	BR11-00	ER11	.453	.709	.044 - .250	7	1/16 - 1/4 x 1/32	1
BRIN-530	BR16-00	ER16	.669	1.063	.044 - .402	12	1/16 - 19/32 x 1/32	1
BRIN-535	BR20-00	ER20	.827	1.220	.044 - .500	15	1/16 - 1/2 x 1/32	1
BRIN-540	BR25-00	ER25	1.024	1.378	.044 - .625	19	1/16 - 5/8 x 1/32	1
BRIN-545	BR32-00	ER32	1.299	1.575	.075 - .750	22	5/32 - 3/4 x 1/32	1
BRIN-550	BR40-00	ER40	1.614	1.811	.125 - 1.00	29	1/8 - 1 x 1/32	1



Collet Chucks
Ultra Precision CAT 40 V-Flange

Briney
Tooling Systems



Ground taper shanks that are guaranteed to meet AT3 specifications. Made from premium 8620 alloy and carbon hardened to Rc 58-62 with .06" case depth per side. All feature ends which are ground while tool is in simulated machine spindle fixture. This process yields .0002" TIR from taper shank to collet chuck ID bore end. Ground v-grooves and head diameters help prevent tools from sticking in automatic tool changers. Ground collet threads ensure best fit of collet nut.

Table with 12 columns: Item No., Briney, Collet Series, Collet Range, Body Dia., Gauge Lgth., Cavity Depth, Collet Nut, Stop Screw, Stop Screw Max. Range, Collet Nut Wrench, Pack Qty. Lists various models like BRIN-555, BRIN-560, etc.

Adapters
End Mill CAT 40 V-Flange

Briney
Tooling Systems



Eccentric bore will reduce tool run-out to as little as .0002" TIR at 4X's length to diameter ratio. Ground taper shanks that are guaranteed to meet AT3 specifications. Made from premium 8620 alloy and carbon hardened to Rc 58-62 with .06" case depth per side. All feature ends which are ground while tool is in simulated machine spindle fixture. Ground v-grooves and head diameters help prevent tools from sticking in automatic tool changers.

Table with 11 columns: Item No., Briney, Bore (In.), OD Dia., Gauge Lgth., Cavity Depth, Set Screw Location, Distance Between Set Screws, Set Screw, End Mill Type, Pack Qty. Divided into Stub Length, Standard Length, and Intermediate Length sections.

Adapters
Shell Mill CAT 40 V-Flange

Briney
Tooling Systems

Ground taper shanks that are guaranteed to meet AT3 specifications. Made from premium 8620 alloy and carbon hardened to Rc 58-62 with .06" case depth per side. All feature ends which are ground while tool is in simulated machine spindle fixture. This process yields .0002" TIR from taper shank to shell mill OD boss end. Ground v-grooves and head diameters help prevent tools from sticking in automatic tool changers. Pressed in drive keys and custom made shell screws included with each holder.

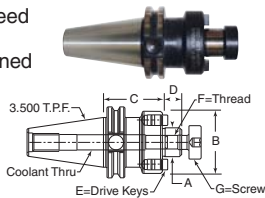


Table with 8 columns: Item No., Briney, Arbor Dia., OD Dia., Gage Lgth., Length of Pilot, Key, Thread, Screw, Pack Qty. Lists models BRIN-745 through BRIN-760.

Collet Wrenches
Mini, Hex and Spanner

Briney
Tooling Systems

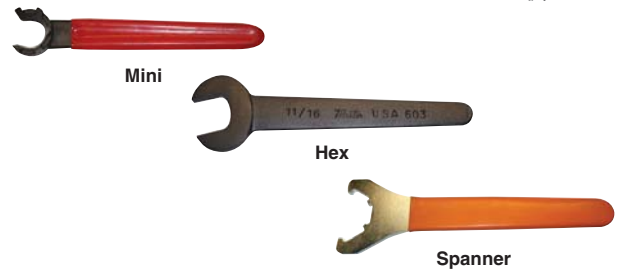


Table with 6 columns: Item No., Briney, Opening, Style, Collet Nut, Pack Qty. Lists models BRIN-765 through BRIN-805.



Arbors
Morse Taper to Jacobs Taper



Item No.	Description	OAL	Pack Qty.
JA-04817	#2 Morse x 2JT	4.16	1
JA-04818	#2 Morse x 3JT	4.50	1
JA-04819	#2 Morse x 4JT	4.94	1
JA-04823	#2 Morse x 33JT	4.28	1
JA-04826	#3 Morse x 2JT	4.94	1
JA-04827	#3 Morse x 3JT	5.27	1
JA-04828	#3 Morse x 4JT	5.70	1
JA-04829	#3 Morse x 5JT	5.94	1
JA-04836	#4 Morse x 3JT	6.25	1
JA-04837	#4 Morse x 4JT	6.69	1
JA-04838	#4 Morse x 5JT	6.91	1
JA-04848	#5 Morse x 5JT	8.16	1

Arbors
Straight Shank to Jacobs Taper



Item No.	Description	Straight Shank	OAL	Pack Qty.
JA-04881	1/2 x 1JT	2.5	3.312	1
JA-04882	1/2 x 2JT	2.5	3.531	1
JA-04883	1/2 x 3JT	2.5	3.875	1
JA-04886	1/2 x 33JT	2.5	3.656	1
JA-04894	3/8 x 6JT	2.5	3.656	1
JA-04901	3/4 x 3JT	3.0	4.375	1

Arbors
Bridgeport Taper to Jacobs Taper



Item No.	Description	OAL	Lgth.	Dia.	Pack Qty.
JA-04876	R-8 Bridgeport x 3JT	5.53 - 5.55	1.25 - 1.27	.75	1

Jacobs® Ball Bearing Super Chucks
Chuck Keys



Designed for extra heavy duty drilling applications on production drilling machines, jig borers, milling machines, lathes and radials. Ideal for close tolerance drilling. The ball thrust bearing reduces friction in the chuck closing mechanism, so the operator can apply more gripping power on the twist drill shank. Sleeve is fluted. Key included with each chuck, however, individual keys also available separately for replacement.

Item No.	Chuck Model	Capacity Inch	Capacity mm	Tapered Mount	Pack Qty.
JA-03001	8-1/2N	0 - 1/4	0 - 6.4	2JT	1
JA-03002	11N	0 - 3/8	0 - 10	2JT	1
JA-03003	14N	0 - 1/2	0 - 13	3JT	1
JA-03004	16N	1/8 - 5/8	3 - 16	3JT	1
JA-03005	18N	1/8 - 3/4	3 - 19	4JT	1
JA-03006	20N	3/8 - 1	10 - 25	5JT	1

Chuck Keys



Item No.	Key No.	Pilot Size	Pack Qty.	Item No.	Key No.	Pilot Size	Pack Qty.
JA-03505	K0	1/8	1	JA-03516	K5	7/16	1
JA-03506	K1	9/32	1	JA-03510	K7	7/32	1
JA-03507	K2	1/4	1	JA-03512	K30	15/64	1
JA-03508	K3	5/16	1	JA-03513	K32	1/4	1
JA-03515	K4	3/8	1				

Taper Mounted Chucks



Item No.	Chuck Model	Capacity		Mount Jacobs	Pack Qty.
		Min.	Max.		
Medium Duty					
JA-02009	1A	.040	.250	1JT	1
JA-02035	2A	.040	.375	2JT	1
Heavy Duty					
JA-02075	34-06	.040	.500	6JT	1
JA-14445	34-33	.040	.500	33JT	1
JA-02086	3A	.125	.625	3JT	1

Jaw and Nut Replacement Unit for Chuck Series 34



Item No.	Chuck Model	Description	Pack Qty.
JA-02521	U34	Jaw and Nut Replacement	1

Ball Bearing Chuck
Replacement Parts
Jaw and Nut Replacement Unit for Older Models



Item No.	Jacobs	Chuck Model Series	Pack Qty.
JA-03262	U14N	14N	1
JA-03264	U18N	18N	1

Thread Mounted Chucks



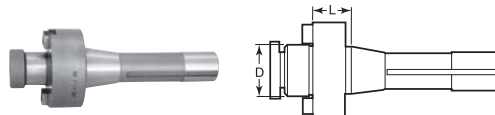
Item No.	Chuck Model	Capacity		Mount Jacobs	Pack Qty.
		Min.	Max.		
Medium					
JA-6287	33BA	.080	.500	1/2-20	1
Heavy					
JA-8859	32BA	.000	.375	1/2-20	1

Key Leash Chuck Accessory



Item No.	Jacobs	Key No.	Pack Qty.
JA-03532	Model B	K30, K32, K2, KK	1

Shell Mill Holder R-8



Item No.	D	L	Square Key Size	Arbor Thread	Draw Bar	Pack Qty.
SO-410-515N	1	1	3/8	1/2-20	7/16-20	1



Industrial Keyless Chucks



Applications

- Portable drilling machines and with taper fittings for stationary drilling machines

Features and Benefits

- Self-tightening feature automatically increases gripping force proportional to increased torque to prevent tool shank slippage in a clockwise rotation
- Drill chucks for industrial use (medium drill) available with screw fittings for professional portable drilling machines and with taper fittings for stationary drilling machines
- Automatic fitting for efficient, fast change of tools
- Fits tools up to 20mm in diameter
- Machine fitting via DIN0238 of Jacobs tapers and UNF thread fittings

Item No.	Capacity		Jacobs Mount	Closed Length		Dimension Open Length		Sleeve Diameter		Pack Qty.
	Inch	mm		Inch	mm	Inch	mm	Inch	mm	
JA-33357	0-.315	0-8	1JT	2.68	68	2.40	61	1.34	34	1
JA-33358	0-.315	0-8	2JT	2.68	68	2.40	61	1.34	34	1
JA-33360	0-.394	0-10	1/2-20	3.15	80	2.87	73	1.54	39	1
JA-33361	0-.394	0-10	2JT	3.15	80	2.87	73	1.54	39	1
JA-33362	.039-.512	1-13	3/8-24	3.74	95	3.39	86	1.73	44	1
JA-33363	.039-.512	1-13	1/2-20	3.74	95	3.39	86	1.73	44	1
JA-33364	.039-.512	1-13	3/32JT	3.74	95	3.39	86	1.73	44	1
JA-33365	.039-.512	1-13	2JT	3.74	95	3.39	86	1.73	44	1
JA-33366	.039-.512	1-13	6JT	3.74	95	3.39	86	1.73	44	1
JA-33367	.118-.630	3-16	1/2-20	4.53	115	4.02	102	2.01	51	1
JA-33368	.118-.630	3-16	3/8-16	4.53	115	4.02	102	2.01	51	1
JA-33369	.118-.630	3-16	3/32JT	4.53	115	4.02	102	2.01	51	1
JA-33370	.118-.630	3-16	6JT	4.53	115	4.02	102	2.01	51	1
JA-33371	.197-.787	5-20	3JT	5.51	140	4.02	102	2.52	64	1

Keyless Chucks



The Albrecht chuck assures high accuracy and maximum grip. Precision ground and lapped surfaces on all major components. All parts except jaw guides and collar are hardened. Smaller sizes are dynamically balanced for high RPM use. Self-tightening as more torque is applied, yet easily opened by hand.

Item No.	Chuck Mount	Capacity (Inch)	Capacity (mm)	Pack Qty.
AC-70050	J1	0-1/4	0-6.5	1
AC-70080	J2	0-3/8	0-10	1
AC-70090	J33	1/2-1-2	1-13	1
AC-70100	J2	1/2-1/2	1-13	1

Keyless Drill Chucks with Integral Shank



Integral shank design is more compact and often less expensive than a combined drill chuck and arbor. Eliminates the possibility of a chuck slipping on its arbor. Self-tightening as more torque is applied, yet easily opened by hand. Balanced. R8 shank type.

Item No.	Capacity Inch	Capacity mm	Max. RPM	Pack Qty.
AC-73040	1/2-1/2	1-13	7,000	1
AC-73090	1/8-3/8	3-16	4,000	1

Master Chuck Keys



Steel



Stainless Steel

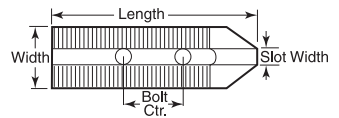
These master chuck keys fit over 200 sizes of popular chucks including Jacobs, Albrecht, Rohm, etc. One key fits many sizes, eliminating the need to keep several individual keys on hand. Saves wear on the chuck by always having the proper key size on hand. Steel are heat treated, black oxide finish. Stainless are polished, rust resistant.

SMK-13 opens chucks from 1/4" to 1/2" on most cordless drills and lighter power tools.

SMK-12 opens heavy duty chucks from 3/8" to 3/4" on most drill presses, shop equipment and heavy duty power tools.

Item No.	Description	Pack Qty.
SMK-13	1/4 to 1/2 Master Chuck - Steel	1
SMK-13SS	1/4 to 1/2 Master Chuck - Stainless Steel	1
SMK-12	3/8 to 3/4 Master Chuck - Steel	1
SMK-12SS	3/8 to 3/4 Master Chuck - Stainless Steel	1

Aluminum Chuck Jaws



For Kitagawa and other Japanese chucks with 1.5mm serrations x 60 degree.

Item No.	Chuck Size	Material	Height	Lgth.	Width	Slot Width	Bolt Size (mm)	Bolt Ctr. Dist.	Pack Qty.
ACJ-3	6	6061-T6	2.00	3.00	1.50	.473	10	.787	1
ACJ-5	8	7075-T6	1.50	4.30	1.50	.551	12	.984	1
ACJ-10	10	7075-T6	1.50	4.60	1.50	.630	12	1.181	1
ACJ-13	10	6061-T6	3.00	4.60	1.50	.630	12	1.181	1

Note: Three pieces per set

WE ARE HERE TO HELP!



Our Customer Service team is friendly, knowledgeable, and ready to help you find the right product for your application.