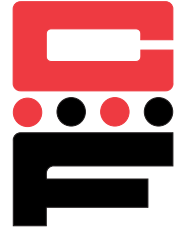


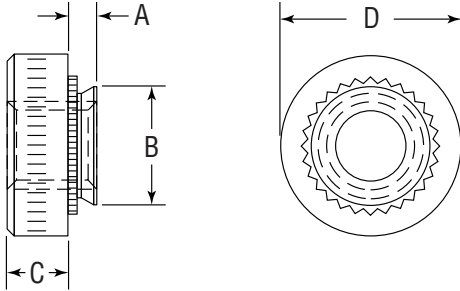


Self-Clinching Nuts for Stainless Steel

Series CFSP



CFSP self-clinching nuts provide strong load-bearing threads in stainless sheet metal as thin as .030 inches (.8mm).



Series	Material	Finish
CFSP	Precipitation Hardened Stainless Steel	Passivated ASTM A967

Thread: Internal 2B, ANSI B1.1 (6H, ANSI/ASME B1.13M).

Use in: Materials with Rockwell Hardness of B-88 or less.

Dimensions & Specifications

	Thread Size	Part Number	A Max.	Min.	+0.003 in. (.08 mm) -0.000 (.00)	B Max.	C ±.01 in. (±.25mm)	D ±.01 in. (±.25mm)	Min.
INCH (in.)	#4-40	CFSP440-0	.030	.030-.039	.166	.165	.07	.25	.19
		CFSP440-1	.038	.040					
		CFSP440-2	.054	.056					
	#6-32	CFSP632-0	.030	.030-.039	.1875	.187	.07	.28	.22
		CFSP632-1	.038	.040					
		CFSP632-2	.054	.056					
	#8-32	CFSP832-0	.030	.030-.039	.213	.212	.09	.31	.27
		CFSP832-1	.038	.040					
		CFSP832-2	.054	.056					
	#10-32	CFSP1032-0	.030	.030-.039	.250	.249	.09	.34	.28
		CFSP1032-1	.038	.040					
		CFSP1032-2	.054	.056					
1/4-20	CFSP420-1	.054	.056	.344	.343	.17	.44	.34	
	CFSP420-2	.087	.090						
METRIC (mm)	M3 x 0.5	CFSPM3-0	.77	.8-1	4.22	4.2	1.5	6.35	4.8
		CFSPM3-1	.97	1.0					
		CFSPM3-2	1.38	1.4					
	M4 x 0.7	CFSPM4-0	.77	.8-1	5.41	5.38	2	7.87	6.9
		CFSPM4-1	.97	1.0					
		CFSPM4-2	1.38	1.4					
	M5 x 0.8	CFSPM5-0	.77	.8-1	6.35	6.33	2	8.75	7.1
		CFSPM5-1	.97	1.0					
		CFSPM5-2	1.38	1.4					
	M6 x 1.0	CFSPM6-1	1.38	1.4	8.75	8.73	4.08	11.1	8.6



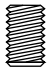
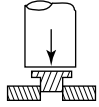
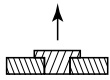
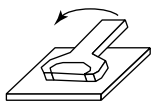


Self-Clinching Nuts for Stainless Steel Series CFSP



Continued from previous page.

Installation & Performance Data

					
	Thread Size	Shank Code	Installation Force (lbs.)	Pushout (lbs.)	Torque-out (in.-lbs.)
INCH (in.)	#4-40	-0	8000	130	14
		-1	9000	165	17
		-2	10000	290	18
	#6-32	-0	8500	140	18
		-1	9500	170	24
		-2	10500	340	28
	#8-32	-0	9000	145	30
		-1	10000	180	37
		-2	11000	360	45
	#10-32	-0	9500	180	35
		-1	10500	230	45
		-2	11500	400	60
1/4-20	-1	13500	450	150	
	-2	13500	600	170	
	Thread Size	Shank Code	Installation Force (kN)	Pushout (N)	Torque-out (N•m)
METRIC (mm)	M3	-0	35.6	575	1.58
		-1	40	725	1.92
		-2	44.5	1290	2.03
	M4	-0	40	645	3.38
		-1	44.5	800	4.18
		-2	49	1600	5.08
	M5	-0	42.3	800	3.95
		-1	46.7	1025	5.08
		-2	51.2	1775	6.77
	M6	-1	60	2000	17

