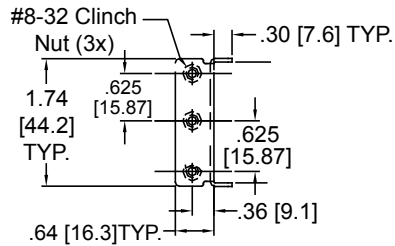
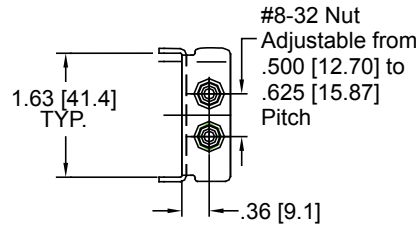


APPLICATIONS: Accommodates a wide range 1U to 4U chassis up to 120 lbs. This product is covered by U.S. and various foreign patents issued and/or pending.

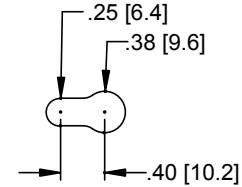
Ball Bearing Electronic Enclosure Slide
 .38" [9.6 mm] Width
 1.75" [44.5 mm] Height
 2.00" [50.8 mm] Over Travel
 Up to 120 lbs.* [55 kg.] Capacity



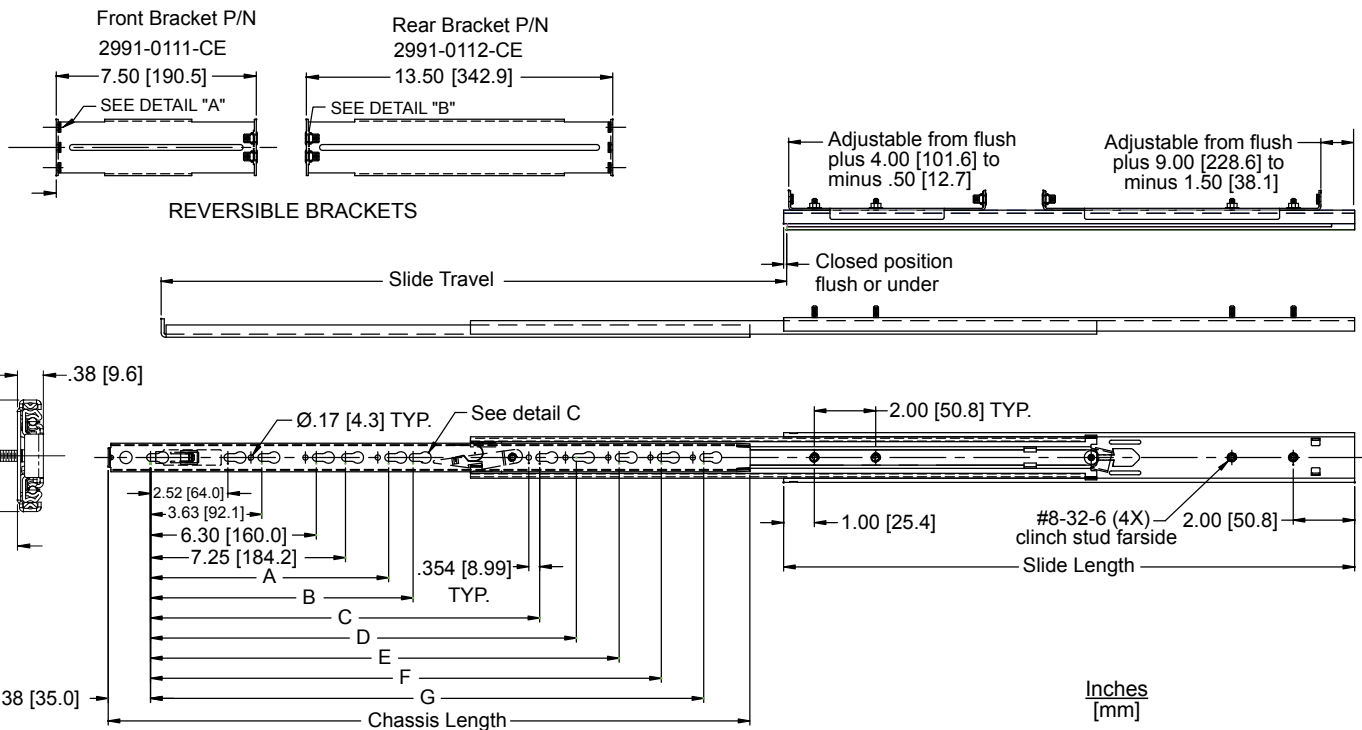
Detail A



Detail B



Detail C



Finish Bright electro-zinc (C) plating

Side Space .38" [9.6 mm]

Length Even lengths 22"–26" [559 mm–660 mm]

Mounting Cabinet Member: Adjustable front and rear brackets.

Height 1.75" [44.5 mm]

Chassis Member: #8 pan head screw or pins (see optional mounting accessories)

Travel 2.00" [50.8 mm] over travel

Load Up to 120 lbs. [55kg] *

Features Unhanded, lock-out, disconnect, reversible EIA mounting brackets

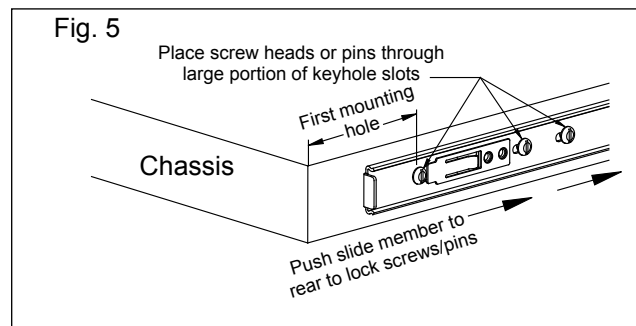
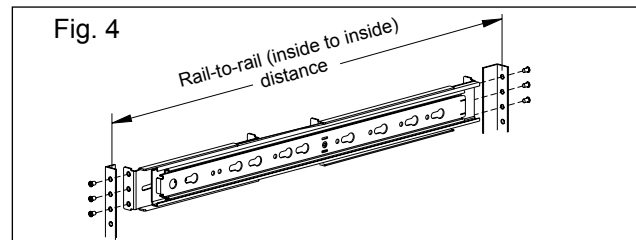
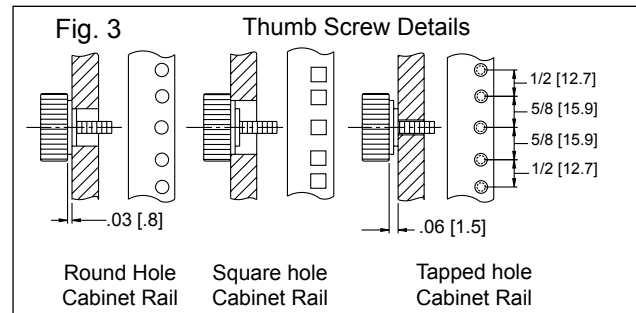
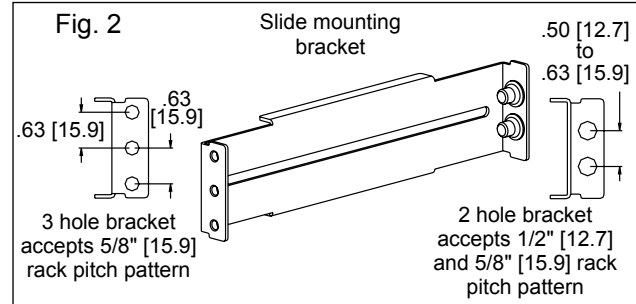
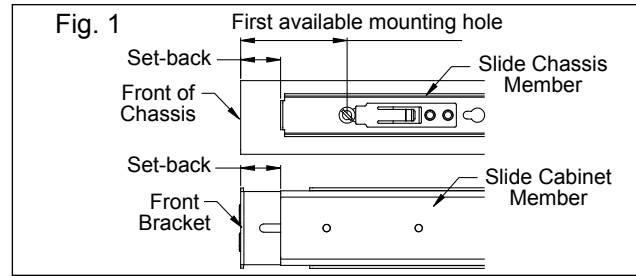
Part Number	Slide Length	Chassis Length	Slide Travel	A	B	C	D	E	F	G
22WB	23.0 [584]	21.95 [558]	24.00 [610]	-	-	14.50 [368.3]	16.38 [416.0]	18.13 [460.4]	-	-
24WB	25.00 [635]	23.95 [608]	26.00 [660]	-	-	14.50 [368.3]	16.38 [416.0]	18.13 [460.4]	20.16 [512.0]	-
26WB	27.00 [686]	25.95 [659]	28.00 [711]	10.08 [256.0]	10.88 [276.2]	-	16.38 [416.0]	18.13 [460.4]	20.16 [512.0]	21.75 [552.5]

* Load rating based on an 16" [406 mm] wide chassis cycled 2,000 times.

Installation Instructions

- 1) Separate slide chassis members by lifting left hand disconnect lever up and pressing the right hand lever down. Keep the chassis members with the original outer (or cabinet) members.
- 2) Install the chassis member first using the first available mounting hole. The set-back distance is the distance from the front of the chassis to the front of the slide. This set-back distance will be the same when installing the front bracket to the cabinet slide member (figure 1).
- 3) Install the chassis member to the side of the chassis using screws or pins. If using screws, you may insert screws directly through the slide member or affix screws to the side of the chassis. If using pre-installed screws, place screw heads through the large portion of the keyhole slots in the slide member (figure 5). Tighten the screws.
If using pins, place the pins through the keyhole slots and push the slide member to the rear. The chassis member lock spring will snap over the first pin to secure without tools.
- 4) Mounting the cabinet members: The slide-to-cabinet mounting brackets have three possible positions to allow alignment to EIA hole patterns. Note the fixed 3-hole spacing and the adjustable 2-hole locations. The 2-hole end of the bracket accepts both .50" [12.7 mm] and .63" [15.9 mm] pitch patterns. Choose the desired pitch pattern and loosely affix brackets to the slide.
- 5) The slides are installed with the brackets placed behind the cabinet rails. First determine the inside rail-to-rail distance (figure 4). Extend the mounting brackets to fit this distance and loosely tighten the hex nuts that hold the brackets in place.
- 6) Insert the thumb screws through the cabinet rail and threaded holes of the brackets.
- 7) Extend slide cabinet member to its fully locked position. Bring ball retainer fully forward. Align chassis members with the black plastic lead-in pins. Install chassis by engaging the slide members and close completely. Check slide alignment by opening and closing the chassis. Any sign of binding indicates lateral stress or misalignment. Adjust slide position until movement is smooth. Tighten all screws and complete installation.

NOTE: To remove chassis, lift the lever on the left hand slide up and the lever on the right hand slide down.



Slide Ordering Instructions

Complete your order by specifying the following:

Total Required Slides _____ **100 Pair C 2907 -22 WB D**
 Slide Finish _____
 Model Number _____
 Slide Length _____
 Model Designation _____
 Distributor Packaging _____

Optional Mounting Accessories

Contact Accuride for alternative attachment methods.

Packaging

Distributor (D) Pack: Polybag packaging includes 1 pair of slides, 2 front brackets, 2 rear brackets, 8 each #8-32 thumb screws, 8 each #8-32 keep nuts. All lengths are packaged 5 pair per box.

Specifications

Slide members and Ball retainers: Cold rolled steel
 Ball bearings: Carburized steel
 RoHS compliant.

Note: Specifications, materials, prices, terms, and delivery are subject to change without notice.

For the most current technical information visit www.accuride.com

Accuride

ACCURIDE INTERNATIONAL INC.

12311 Shoemaker Avenue
 Santa Fe Springs, CA 90670

TEL (562) 903-0200
 FAX (562) 903-0208
www.accuride.com

Manufacturing, Engineering, and Sales
 United States • Germany • Japan • Mexico • United Kingdom • China

Copyright © 2013 Accuride International Inc. 3700-9476(1140)-MK108-R6-0513