

Cable Carriers

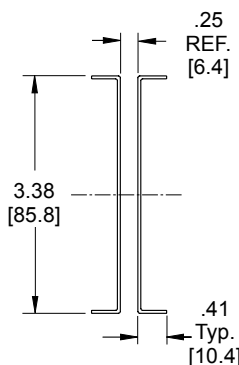
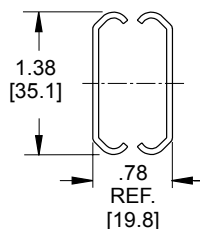
- Prevents sagging and tangling of cable when the chassis is moved.
- May be installed separately or as part of an Accuride chassis suspension system.
- Allows a minimum of 1" [25.4 mm] behind chassis when fully closed.



CC9



CC11



- **CC9-1 (Standard)**
23" [584 mm] long when fully extended
- CC9-2 (Manufactured to order)
29" [736 mm] long when fully extended
- Use with round cable
- Quick disconnect chassis fasteners
- For 2U and larger chassis
- Contact Accuride for 1U installation information
- **CC11**
28.24" [717 mm] when fully extended
- Use with ribbon cable
- Wide arm
- Use customer-approved cable ties

Mounting Brackets and General Mounting Instructions

Mounting Brackets

- Brackets simplify the installation of Accuride slides in electronic enclosures.
- Brackets fit over slides and mount to vertical rail.
- Use Rack Mounting Accessories Selection Guide located on Accuride's web site to choose compatible brackets.
- For each pair of slides order:
 - 4 brackets (usually 2 front brackets and 2 rear brackets)
 - 4 bracket-to-slide mounting kits
 - 4 bar nuts
- Short brackets are usually used at the front of the chassis and long brackets are used at the rear for increased adjustability.

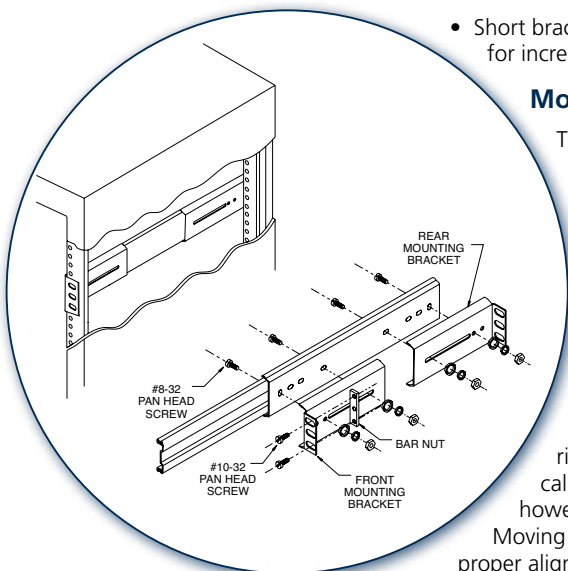
Mounting Instructions

The mounting brackets shown on the following page are designed specifically for Accuride slides. Slides properly installed with the correct mounting brackets will provide lasting, maintenance-free service. The diagram at the left illustrates the correct orientation of the mounting screws when attaching the brackets to the slides.

To ensure proper operation of the slide, make certain that all bracket mounting screw heads are inserted so the screw heads are inside the slides. The front bracket should first be positioned, then securely fastened in place. The rear bracket screws should be left sufficiently loose to allow adjustment while fitting to the vertical mounting rails.

During installation in the enclosure, matching the alignment of the left hand and right hand slides is accomplished by installing one slide, then aligning it to the vertical mounting rails and securing the mounting screws. Then the other slide is installed, however the mounting screws are left sufficiently loose to permit horizontal adjustment.

Moving the chassis in and out a few times prior to tightening the mounting screws will ensure proper alignment of the slides to each other and to the cabinet. Any sign of binding indicates lateral stress or misalignment.

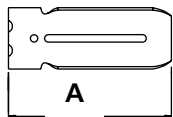


Rack Mounting Brackets

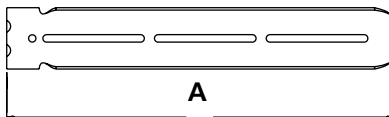
Model Numbers	A	A	B	B	B	C	D	E	F
	Short	Long	4 Hole	3 Hole	2 Hole				
201, 204A-LR, 301	4.51 [114.6]	11.01 [279.7]	2.50 [63.5]	1.65 [41.9]	1.51 [38.4]	.72 [18.3]	.29 [7.4]	.66 [18.8]	.60 [15.2]
305A-LR	4.31 [109.5]	10.81 [274.6]	2.50 [63.5]	1.65 [41.9]	1.51 [38.4]	.78 [19.8]	.29 [7.4]	.72 [18.3]	.60 [15.2]
2907	3.04 [77.1]	6.04 [153.3]	-	1.74 [44.2]	-	.69 [17.4]	.213 [5.41]	.213 [5.41]	.63 [15.9]
	-	11.04 [280.4]	-	1.63 [41.4]	-	.69 [17.4]	.213 [5.41]	.213 [5.41]	.63 [15.9]
3301, 3307, 3308	4.51 [114.6]	11.01 [279.7]	2.50 [63.5]	1.75 [44.5]	1.75 [44.5]	.72 [18.3]	.29 [7.4]	.55 [14.0]	.60 [15.2]
3507	3.01 [77.6]	6.06 [153.8]	-	2.19 [55.7]	-	.70 [17.8]	.213 [5.41]	.213 [5.41]	.63 [15.9]
3601, 3607	4.74 [120.4]	11.00 [279.4]	2.50 [63.5]	-	-	.72 [18.3]	.29 [7.4]	.51 [13.0]	.60 [15.2]

- See Rack Mounting Accessories Selection Guide at www.abccuride.com for ordering part numbers.
- Brackets shown below are for Models 201/204A-LR/301 and are shown for representation only.

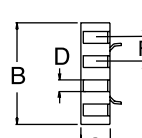
SHORT BRACKET



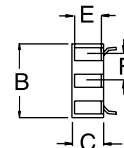
LONG BRACKET



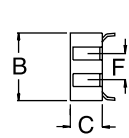
4-HOLE



3-HOLE



2-HOLE



Bar Nuts

- Bar nuts simplify the installation and adjustment of Accuride slides in electronic enclosures
- It is easier to install bar nuts than individual nuts when access to the slide mounting bracket is limited
- Order 4 bar nuts per pair of slides

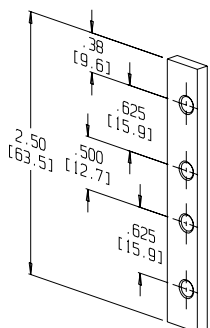
The following dimensions apply to all bar nuts:

Thickness of bar nut: .13 [3.2]

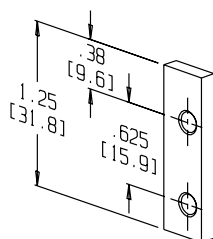
Width of bar nut: .38 [9.6]

Mounting holes: #10-32 thread

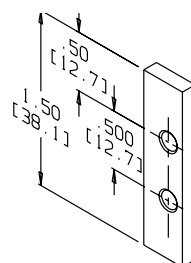
Mounting holes/
center to edge: .14 [3.6]



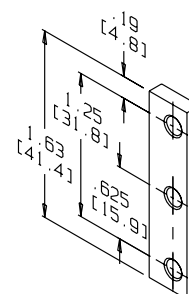
4100-0101-CE



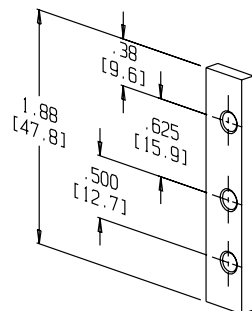
4100-0103-CE



4100-0106-CE



4130-0102-CE



4100-0108-CE