



**BALL CASTERS**

Buy One or Buy Bulk & SAVE

Rolling Star Casters  
Light Duty  
Applications: 33-88 Lbs.



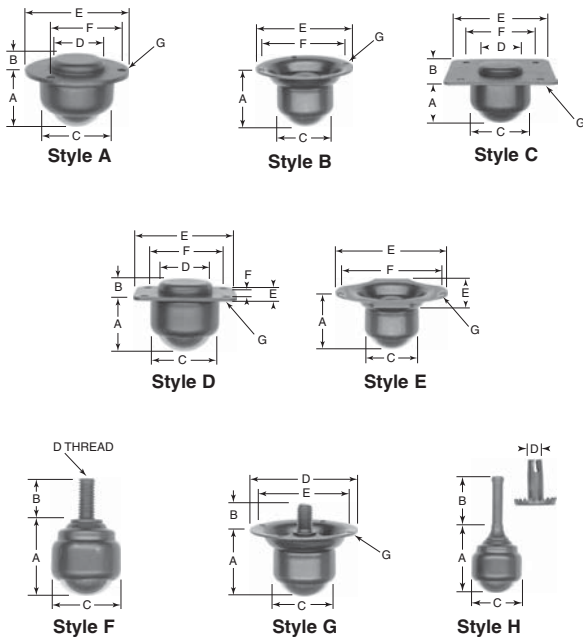
E.R. Wagner  
CASTERS & WHEELS Manufacturing Co.



Mobilizes stationary products at a very low overall height. Can be used with chairs, couches and patio furniture.

Item No.	Overall Diameter	Ball Diameter	Wheel Type	Capacity (Lbs.)	Type	OAH	Pack Qty.
WC-BP99-10	3/4	1/2	Nylon	33	Rigid	3/4	1
WC-BP99-20	19/32	13/16	Nylon	88	Rigid	1 1/2	1
WC-BP99-30	1 1/2	13/16	Nylon	46-57	Spring	2 13/16	1

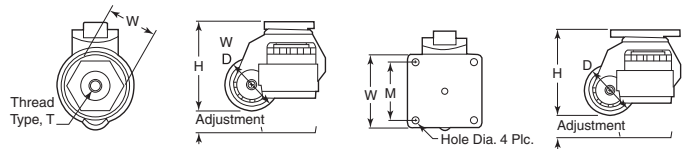
**Ball Casters**



Ball bearings and roller ball principle allows unrestricted movement in all directions. These products can be used as casters or in the inverted position as a ball transfer unit. All caster components are made from carbon steel. Balls and supporting seat are hardened for long life. Exposed parts are black oxide.

Item No.	Ball Size	A	B	C	D	E	F	G	Capacity (Lbs.)	Pack Qty.
<b>Style A - Round Plate</b>										
ACC-6561	1 1/16	3/4	5/32	15/16	45/64	1 1/16	1 7/64	.116	100	1
ACC-6562	1	1 1/16	3/16	1 1/32	37/32	1 29/32	1 19/32	.144	150	1
ACC-6564	1 1/4	1 3/16	3/16	1 27/64	1 27/64	2	1 49/64	.144	250	1
<b>Style B - Round Plate - Flush Mount</b>										
ACC-1081	1	1 1/2	—	1 1/32	—	2 7/16	2 3/16	.156	150	1
ACC-1082	1 1/8	1 21/32	—	1 19/64	—	2 7/16	2 3/16	.156	200	1
ACC-1083	1 1/4	1 1/4	—	1 27/64	—	2 7/16	2 3/16	.156	250	1
<b>Style C - Square Plate</b>										
ACC-7401	1	1 1/8	3/16	1 7/32	31/32	2 1/4	1 37/64	.156	150	1
ACC-7402	1 1/8	1 1/32	3/16	1 19/64	31/32	2 1/4	1 37/64	.156	200	1
<b>Style D - Rectangle Plate</b>										
ACC-6621	1 1/16	3/4	5/32	15/16	45/64	1 5/16 X 1 7/32	1 1/16 X 3 1/32	.116	100	1
<b>Style E - Trunk Plate - Flush Mount</b>										
ACC-7101	1 1/16	1	—	15/16	—	1 11/16 X 2 1/16	2	.156	100	1
ACC-7102	1	1 3/32	—	1 1/32	—	1 11/16 X 2 1/16	2	.156	150	1
<b>Style F - Threaded Stem</b>										
ACC-1071	1	1 15/32	1 3/32	1 7/32	1/4-20	—	—	—	150	1
ACC-1072	1	1 15/32	3/4	1 7/32	5/16-18	—	—	—	150	1
ACC-1073	1	1 15/32	1 1/16	1 7/32	3/8-16	—	—	—	150	1
<b>Style G - 3/8-16 Threaded Stem w/Round Flag</b>										
ACC-1201	1	1 1/2	1 1/16	1 1/32	2 1/16	—	—	.156	150	1
ACC-1203	1 1/4	1 3/4	1 1/16	1 27/64	2 1/16	—	—	.156	250	1
<b>Style H - Grip Neck Stem (Socket Included)</b>										
ACC-6584	1 1/4	1 29/32	3/4	1 27/64	3/8	—	—	—	250	1

**Leveling Casters**



Stud Mount

Plate Mount

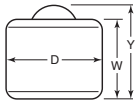
This caster incorporates the feasibility to move equipment easily with a high-grade nylon wheel, leveling, and vibration control. This caster combines precision hand leveling adjustment, anti-vibration control and 360 degree freedom of motion in one unit. Available with either a stud mount or a plate mount.

Item No.	Mount	Load Range Min.	Load Range Max.	H	Adjustment	D	Thread Type T	Thread Depth	Mounting Holes	M	W	Pack Qty.	Bulk Pack Qty.
<b>Style A</b>													
SX-50S	Stud	25	50	2.80	.39	1.65	M8	.47	—	—	1 1/16	1	40
SX-300S	Stud	200	300	3.27	.39	1.97	M12	.59	—	—	1 13/16	1	40
SX-300P	Plate	200	300	3.27	.39	1.97	—	—	.26	2.28	2 7/8	1	40
SX-600S	Stud	300	600	4.02	.59	2.48	M12	.59	—	—	2 3/16	1	40
SX-600P	Plate	400	600	4.02	.59	2.48	—	—	.35	2.76	3 3/16	1	40
SX-1000S	Stud	600	1,000	4.72	.71	2.83	M16	.63	—	—	2 3/4	1	40
SX-1000P	Plate	800	1,000	4.72	.71	2.83	—	—	.43	2.76	3 3/4	1	40
<b>Style B</b>													
SX-200S	Stud	50	200	2.78	.35	1.97	M12	.59	—	—	1 13/16	1	40
SX-200P	Plate	50	200	2.78	.35	1.97	—	—	.26	2.28	2 7/8	1	40
<b>Style C</b>													
SX-400P	Plate	300	400	2.99	.39	1.97	—	—	.35	2.76	3 3/16	1	40
SX-800P	Plate	600	800	3.74	.51	2.83	—	—	.35	2.76	3 3/16	1	40

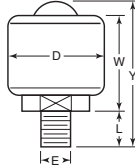
**BALL CASTERS & TRANSFERS**



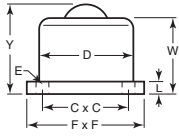
**Hevi-Load™  
Inch**



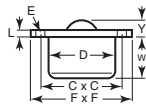
**Type A**



**Type B**



**Type C**



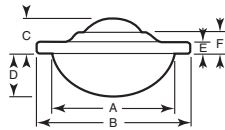
**Type D**

Used for heavier loads than ball casters. Ball transfers use a recirculating ball system to support and facilitate the rotation of the primary ball. The small balls travel on a hardened steel, precision machined track that resists wear and damage. Runs equally well in any position. Ideal where damage and impact protection is essential. Ball units provide instantaneous change of direction not possible with wheel casters.

Item No.	Type	Ball Dia.	Y	W	D	L	E	FxF	CxC	Capacity (Lbs.)	Pack Qty.
SKF-7101	A	.5	.77	.63	.81	—	—	—	—	75	1
SKF-7121	A	1.0	1.76	1.52	2	—	—	—	—	700	1
SKF-7110	B	.5	1.41	.63	.81	.64	5/16-24	—	—	75	1
SKF-7127	B	1.0	2.85	1.68	1.75	.95	1/2-20	—	—	300	1
SKF-7131	B	1.0	3.03	1.78	2	1	1/2-20	—	—	700	1
SKF-7154	B	1.5	4.50	2.38	2.38	1.60	3/4-16	—	—	2,204	1
SKF-7103*	C	.5	.89	.75	.94	.13	.14	1.75	1.37	75	1
SKF-7122	C	1.0	1.63	1.41	1.75	.19	.22	2.25	1.75	300	1
SKF-7123	C	1.0	1.79	1.54	2	.25	.28	3	2.28	700	1
SKF-7104*	D	.5	.88	.44	.94	.13	.14	1.75	1.37	75	1
SKF-7152	D	1.5	2.41	1.41	2.38	.50	.28	3	2.28	2,204	1

\*Diameter - round

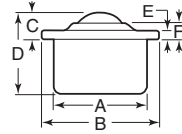
**Low Profile  
Metric**



Flange mounted ball transfers offer a low profile, multi-directional solution to various material handling, positioning, and/or conveyance applications. All units, except the stainless steel model, come complete with a felt seal. The stainless steel unit is made from 420 stainless steel and has a unique multi-hole filtration system designed to purge out contamination and is provided with no oil/no seal, which allows the unit to operate in harsh conditions by efficiently filtering out debris through the base. Metric dimensions are in millimeters.

Item No.	Ball Dia.	Load Up Cap. Lbs.	Load Down Cap. Lbs.	Fixing Holes	A	B	C	D	E	F	Pack Qty.
<b>Carbon Steel</b>											
SKF-3016	15.8	26	13	2	22.2	41.3	10.2	8.3	3.2	6	1
SKF-1008	25.4	121	55	3	37.2	73	14.2	15.8	3.5	6.3	1
SKF-2002	39.7	496	220	3	62	94.6	21.2	27.3	6.3	14	1
<b>Stainless Steel</b>											
SKF-3274	31.7	276	121	3	45.5	73.7	16.2	19.9	4.2	8	1

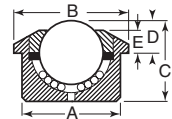
**Medium Duty  
Metric**



Zinc plated housing with Type 420 stainless balls. A felt seal is included on all but SKF-701. Maximum temperature is 212 degree Fahrenheit. Dimensions are in millimeters.

Item No.	Ball Dia.	Capacity (Lbs.)	A	B	C	D	E	F	Pack Qty.
SKF-701	15	132	24	31	9.5	21.0	2.8	6.3	1
SKF-702	22	352	36	45	9.8	30.0	2.8	5.5	1
SKF-703	30	661	45	55	13.8	37.0	4.0	8.3	1
SKF-704	45	1,344	62	75	19.0	53.5	4.0	10.0	1

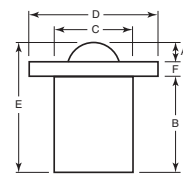
**Heavy Duty  
Metric**



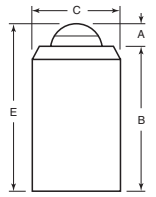
Solid body steel ball transfers were designed for heavy and impact load applications. The units incorporate a seal and self cleaning hole for maximum efficiency and smooth running. They are machined with solid steel bodies and hardened work surfaces. Steel models are steel bodies with chrome steel. Hardness 60-66 HRC, zinc plated finish. Stainless models have stainless bodies A1S1 303 and stainless bearings A1S1 420 or 440, bright machined. All dimensions are in millimeters.

Item No.	Ball Dia.	Capacity (Lbs.)	A mm	B mm	C mm	D mm	E mm	Pack Qty.
<b>Steel</b>								
SKF-2213	22	397	36	45	30.5	9.8	6	1
SKF-3013	30	770	45	55	36.8	13.8	8.3	1
<b>Stainless</b>								
SKF-2215	22	264	36	45	30.5	9.8	6	1

**Spring Loaded Ball Transfers  
Inch**



**Type A**



**Type B**

Shears, presses and molding machines are just a few of the many applications where open loaded ball transfers can be used. A press for example may have spring loaded ball units set in the platen to facilitate the on and off loading of the workpiece. When the press operates the springs compress and the ball units sink below the surface-leaving the workpiece on a firm base. When pressure is released the ball units rise allowing the ball to roll, enabling the workpiece to be removed easily. Steel bodies with hardened carbon steel balls. "A" style flanges have three equally spaced holes on bolt center diameters (BCD) listed below.

Item No.	Type	Ball Dia. Inch	Support Load (Lbs.)	Load to Fully Depress	A	B	C	D	E	F	Mounting Hole Size	BCD	Pack Qty.
SKF-3011	A	3/4	22	66	.14	2.03	1.44	2.62	2.48	.31	.27	2.00	1
SKF-3009	B	3/4	22	77	.37	2.19	1.44	—	2.56	—	—	—	1
SKF-1018	A	1	77	220	.23	2.10	1.75	3.00	2.64	.31	.27	2.37	1
SKF-1016	B	1	77	309	.47	2.31	1.75	—	2.78	—	—	—	1
SKF-1028	A	1 1/4	220	397	.30	3.05	2.31	3.50	3.73	.37	.27	2.87	1
SKF-1026	B	1 1/4	220	441	.41	3.34	2.31	—	3.75	—	—	—	1